



FILE NO.:	6040.122
DATE:	May 31, 2013
SUPERSEDES:	6040.122
DATE:	December 21, 2011

PARTS LIST

SERIES 4030

BASE MOUNTED PUMP

CENTERLINE DISCHARGE
"L" DESIGNATION

1 5/8" IMPELLER BORE -- 2 1/8" MECHANICAL SEAL

NEW DESIGN

NEMA FRAME ASSIGNMENTS

OPEN & TEFC (TEFC FRAMES IN GREY BOX WHERE DIFFERENT THAN OPEN)

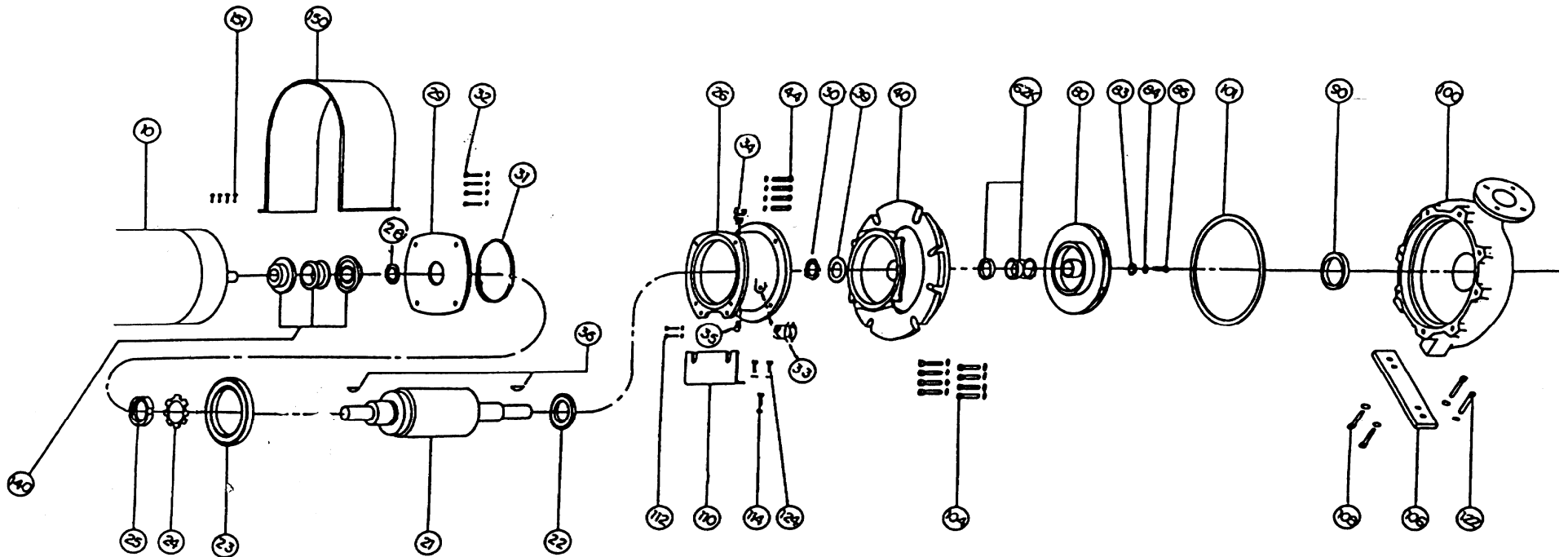
FRAME PROGRAM HP	3600 RPM						1800 RPM			1200 RPM			900 RPM					
	"T" FRAMES	"U" FRAMES	ORIGINAL NEMA FRAMES		"T" FRAMES	"U" FRAMES	ORIGINAL NEMA FRAMES	"T" FRAMES	"U" FRAMES	ORIGINAL NEMA FRAMES	"T" FRAMES	"U" FRAMES	ORIGINAL NEMA FRAMES					
	1964	1952			1964	1952		1964	1952		1964	1952						
	-	-	-		143T	182	203	145T	184	204	182T	213	225					
1 1/2	143T	182	203		145T	184	204	182T	184	224	184T	213	254					
2	145T	184	204		145T	184	224	184T	213	225	213T	215	254					
3	145T	182T	184	224	182T	213	225	213T	215	254	215T	254U	284					
5	182T	184T	213	225	184	215	254	215T	254U	284	254T	256U	324					
7 1/2	184T	213T	215	254	213T	254U	284	254T	256U	324	256T	284U	326					
10	213T	215T	254U	284	215T	256U	324	256T	284	326	284T	286U	364					
15	215T	254T	256U	324	254T	284T	326	284T	234T	364	286T	326U	365					
20	254T	256T	284U	286U	326	256T	286U	364	286T	326U	365	324T	364U	404				
25	256T	284TS	286U	324U	364S	365S	284T	324U	364	365	324T	364U	404	326T	365U	405		
30	284TS	286TS	324S	326S	364S	404S	286T	326U	365	404	326T	365U	405	364T	404U	444		
40	286TS	324TS	326S	364US	365S	405S	324T	364U	404	405	364T	404U	444	365T	405U	445		
50	324TS	326TS	364US	404S	444S	326T	365US	405S	444S	365T	405U	445	404T	444U	504U			
60	326TS	364TS	365US	405US	405S	445S	364TS	404US	405US	444S	445S	404T	444U	504U	405T	445U	505	
75	364TS	365TS	404US	444US	444S	504S	365TS	405US	444US	445S	504S	405T	445U	505	444T	-	-	
100	365TS	405TS	405US	445US	445S	505S	404TS	405TS	444US	445US	504S	505S	444T	-	-	445T	-	-
125	404TS	444TS	444US	504US	405TS	444TS	445US	505S	445T	-	-	-	-	-	-	-	-	-
150	405TS	445TS	445US	505S	444TS	445TS	-	-	-	-	-	-	-	-	-	-	-	-
200	444TS	-	-	-	445TS	-	-	-	-	-	-	-	-	-	-	-	-	-
250	445TS	-	-	-	-	-	-	-	-	-	-	-	-	-	-	-	-	-

4030 BEARING FRAME UTILIZATION CHART (60 Hz)

MOTOR HP	1150 RPM	0.5	0.75	1	1.5	2	3	5	7.5	10	15	20	25	30	40	50	60	75	100	125	150	200	250	300	350	400	
	1750 RPM	0.8	1	1.5 & 2	2	3	5	7.5	10	15	20	25	30	40	50	60	75	100	125	150	200	250	300	350	400	450	
	3500 RPM	1.5	2	3	5	7.5	10	15	20	25	30	40	50	60	75	100	125	150	200	250	300	350	400	450	500	550	
PUMP SIZE	MOTOR FRAME SIZE	1	1	1	1	2	2	2	2	8	8	2	2	2	3	3	6	6	3	3	0	0	4	4	4	4	4
		4	4	8	8	1	1	5	5	4	6	8	8	4	6	2	2	4	5	6	6	4	5	0	0	4	4
		5	3	5	2	4	3	5	4	6	T	T	S	S	T	T	S	S	T	T	S	S	4	4	4	4	4
		6	T	T	T	T	T	T	T	T	S	S	T	T	S	S	T	T	T	T	S	S	T	T	T	T	T
1.5x1x6	S	S	S	S	S	S	S	S	S	S	S	S	S	S	S	S	S	S	S	S	S	S	S	S	S	S	
3x1.5x6	S	S	S	S	S	S	S	S	S	S	S	S	S	S	S	S	S	S	S	S	S	S	S	S	S	S	
3x2x6	S	S	S	S	S	S	S	S	S	S	S	S	S	S	S	S	S	S	S	S	S	S	S	S	S	S	
3x2.5x6	S	S	S	S	S	S	S	S	S	S	S	S	S	S	S	S	S	S	S	S	S	S	S	S	S	S	
4x3x6	S	S	S	S	S	S	S	S	M	M	M	M	S	S	S	S	S	S	S	S	S	S	S	S	S	S	
1.5x1x8	S	S	S	S	S	S	S	S	S	S	S	S	S	S	S	S	S	S	S	S	S	S	S	S	S	S	
3x1.5x8	S	S	S	S	S	S	S	S	S	S	S	S	S	M	M	S	S	S	S	S	S	S	S	S	S	S	
3x2x8	S	S	S	S	S	S	S	S	S	S	S	S	S	M	M	S	S	S	S	S	S	S	S	S	S	S	
3x2.5x8	S	S	S	S	S	S	S	S	M	M	M	M	S	S	S	S	S	S	S	S	S	S	S	S	S	S	
4x3x8	S	S	S	S	S	S	S	S	M	M	M	M	S	S	S	S	S	S	S	S	S	S	S	S	S	S	
5x4x8	-	S	S	S	S	S	S	S	M	M	MHD	MHD	S	S	MHD	MHD	S	S	S	S	S	S	S	S	S	S	
6x4x8	-	S	S	S	S	S	S	S	M	M	MHD	MHD	S	S	MHD	MHD	S	S	S	S	S	S	S	S	S	S	
2x1x10	S	S	S	S	S	S	S	S	M	M	M	M	S	S	M	M	S	S	S	S	S	S	S	S	S	S	
2x1.5x10	S	S	S	S	S	S	S	S	M	M	M	M	S	S	M	M	S	S	S	S	S	S	S	S	S	S	
3x1.5x10	-	S	S	S	S	S	S	S	M	M	M	M	S	S	M	M	S	S	S	S	S	S	S	S	S	S	
3x2x10	-	S	S	S	S	S	S	S	M	M	M	M	S	S	M	M	S	S	S	S	S	S	S	S	S	S	
3x2.5x10	-	S	S	S	S	S	S	S	M	M	M	M	S	S	M	M	S	S	S	S	S	S	S	S	S	S	
4x3x10	-	-	-	S	S	S	S	S	S	M	M	S	S	MHD	MHD	S	S	MHD	MHD	S	S	MHD	MHD	S	S	S	
5x4x10	-	-	-	S	S	S	S	S	M	S	MHD	MHD	MHD	MHD	S	S	MHD	MHD	S	S	MHD	MHD	S	S	S	S	
6x4x10	-	-	-	S	S	S	S	S	M	S	MHD	MHD	MHD	MHD	S	S	MHD	MHD	S	S	MHD	MHD	S	S	S	S	
6x5x10	-	-	-	S	S	S	S	S	M	S	M	M	S	S	M	M	S	S	S	S	S	S	S	S	S	S	
8x6x10	-	-	-	-	-	M	M	M	M	S	S	S	S	M	M	S	S	S	S	S	S	S	S	S	S	S	
4x3x11.5	-	-	-	S	S	S	S	S	S	S	S	S	S	M	M	S	S	S	S	S	S	S	S	S	S	S	
5x4x11.5	-	-	-	-	-	S	S	S	S	S	S	S	S	M	M	S	S	S	S	S	S	S	S	S	S	S	
6x5x11.5	-	-	-	-	-	S	S	S	M	S	M	M	S	S	M	M	S	S	S	S	S	S	S	S	S	S	
8x6x11.5	-	-	-	-	-	M	M	M	M	S	S	S	S	M	M	S	S	S	S	S	S	S	S	S	S	S	
3x1.5x13	-	-	-	-	-	M	M	M	M	M	M	S	S	MHD	MHD	S	S	MHD	MHD	S	S	MHD	MHD	S	S	S	
3x2x13	-	-	-	-	-	M	M	M	M	S	S	S	S	MHD	MHD	S	S	MHD	MHD	S	S	MHD	MHD	S	S	S	
4x3x13	-	-	-	-	-	M	M	M	M	S	S	S	S	M	M	S	S	M	M	S	S	M	M	S	S	S	
4x3x13L	-	-	-	-	-	M	M	M	M	S	S	S	S	M	M	S	S	M	M	S	S	M	M	S	S	S	
6x4x13	-	-	-	-	-	M	M	M	M	S	S	S	S	M	M	S	S	M	M	S	S	M	M	S	S	S	
6x4x13H	-	-	-	-	-	M	M	M	M	S	S	S	S	M	M	S	S	M	M	S	S	M	M	S	S	S	
6x5x13	-	-	-	-	-	M	M	M	M	S	S	S	S	M	M	S	S	M	M	S	S	M	M	S	S	S	
6x5x13H	-	-	-	-	-	M	M	M	M	S	S	S	S	M	M	S	S	M	M	S	S	M	M	S	S	S	
8x6x13	-	-	-	-	-	M	M	M	M	S	S	S	S	M	M	S	S	M	M	S	S	M	M	S	S	S	
10x8x13	-	-	-	-	-	-	-	-	-	L	L	S	S	L	L	S	S	L	L	S	S	L	L	S	S	S	
8x6x15	-	-	-	-	-	-	-	-	-	-	L	L	S	S	L	L	S	S	L	L	S	S	L	L	S	S	
10x8x15	-	-	-	-	-	-	-	-	-	-	L	L	S	S	L	L	S	S	L	L	S	S	L	L	S	S	

* Note: When replacing Old "M" Oil Lubricated Bearing Frames update with New Design MHD Bearing Frame with Double Row Bearings.

**SERIES 4030 CENTERLINE DISCHARGE, BASE MOUNTED PUMP
 "L" SIZE 1 5/8" IMPELLER BORE -- 2 1/8" MECHANICAL SEAL
 EXPLODED VIEW -- OIL LUBRICATION**



INDEX

ITEM	DESCRIPTION	PAGE	ITEM	DESCRIPTION	PAGE	ITEM	DESCRIPTION	PAGE
**	BEARING FRAME ASSY. STD	8	32	BEARING COVER CAPSCREW	8 & 10	83	IMPELLER WASHER	9 & 11
**	BEARING FRAME ASSY. S/S	10	33	OIL VIEW GAUGE	8 & 10	86	IMPELLER CAPSCREW	9 & 11
21	SHAFT ASSEMBLY	8 & 10	34	VENT FITTING	8 & 10	100	CASING	4
22	BALL BEARING (INBOARD)	8 & 10	35	PIPE PLUG	8 & 10	101	CASING GASKET	7
23	BALL BEARING (OUTBOARD)	8 & 10	36	IMPELLER COUPLER KEY	8 & 10	104	CASING CAPSCREW	6
24	LOCKWASHER	8 & 10	39	WATER SLINGER	8 & 10	110	BEARING FRAME SUPPORT FOOT	9 & 11
25	LOCKNUT	8 & 10	40	ADAPTER	6	112	BRG. FRM. SUPPORT FOOT CAPSCREW (UPR)	9 & 11
26	BEARING FRAME	8 & 10	42	OUTBOARD BEARING COVER	8 & 10	114	BRG. FRM. SUPPORT FOOT ADJUSTING SCREW	9 & 11
28	OIL SEAL (OUTBOARD)	8 & 10	43	OUTBRD BRG COVER SCREWS & WASHERS	8 & 10	114	JAM NUT	9 & 11
29	BEARING COVER	8 & 10	44	BRG. HOUSING CAPSCREW	7	124	BRG. FRM. SUPPORT FOOT CAPSCREWS (LWR)	9 & 11
30	OIL SEAL (INBOARD)	8 & 10	62	MECHANICAL SEAL ASSEMBLY	9 & 11	140	COUPLER	12 & 13
31	"O" RING	8 & 10	80	IMPELLER	5			

4030 PUMP PARTS

CENTERLINE DISCHARGE

"L" SIZE 1 5/8" IMPELLER BORE ----- 1 5/8" SHAFT DIAMETER AT COUPLER

2 1/8" MECHANICAL SEAL

ITEM 100 CASING

PUMP SIZE	PRESSURE RATING	CONST.	PART NUMBER	BAR CODE
10 X 8 X 13	125 LB.	B.F. & A.I.	427342-011	
10 X 8 X 13	250 LB.	D.I.	427342-041	
10 X 8 X 13	250 LB.	A.B.	427342-031	
8 X 6 X 15	125 LB.	B.F. & A.I.	427229-011	
8 X 6 X 15	250 LB.	D.I.	427230-031	
8 X 6 X 15	125 LB.	A.B.	427230-041	
10 X 8 X 15	125 LB.	B.F. & A.I.	427232-011	
10 X 8 X 15	250 LB.	D.I.	427233-031	
10 X 8 X 15	125 LB.	A.B.	427233-041	

4030 PUMP PARTS

CENTERLINE DISCHARGE

"L" SIZE 1 5/8" IMPELLER BORE ----- 1 5/8" SHAFT DIAMETER AT COUPLER
2 1/8" MECHANICAL SEAL

ITEM 80 IMPELLER*			
PUMP SIZE	CONST.	PART NUMBER	BAR CODE
10 X 8 X 13	B.F. - A.B.	427333-041	
10 X 8 X 13	A.I.	427333-011	
8 X 6 X 15	B.F. - A.B.	427214-041	
8 X 6 X 15	A.I.	427214-011	
10 X 8 X 15	B.F. - A.B.	427217-041	
10 X 8 X 15	A.I.	427217-031	

Notes: * Impeller Part Numbers are for unbalanced, full diameter impellers. Always specify the Pump Serial Number. If possible, measure diameter of the impeller being replaced.

** B. F. Denotes "Bronze Fitted" construction. Parts in contact with the pumped liquid are bronze or copper, except casing and adapter.

A. I. Denotes "All Iron" construction. Parts in contact with the pumped liquid are cast iron or steel, except shaft sleeve & mechanical seal.

4030 PUMP PARTS

CENTERLINE DISCHARGE

"L" SIZE 1 5/8" IMPELLER BORE ----- 1 5/8" SHAFT DIAMETER AT COUPLER

2 1/8" MECHANICAL SEAL

ITEM 104 CASING CAPS. & WASHER

PUMP SIZE	NO. REQ'D	SIZE	PART NUMBER	BAR CODE
10 X 8 X 13	16	CAPSCREW 5/8-11NC X 1 1/2" LG	911129-112	
	16	WASHER 5/8 - 11NC STL - FLAT	927121-100	
8 X 6 X 15 10 X 8 X 15	16	CAPSCREW 5/8-11NC X 1 3/4" LG	911129-116	
	16	WASHER 5/8 - 11NC STL - FLAT	927121-100	

ITEM 40 ADAPTER

PUMP SIZE	CONST.	PART NUMBER	BAR CODE
10 X 8 X 13	B.F. - A.I.	427350-011	
	D.I.	427350-031	
8 X 6 X 15 10 X 8 X 15	B.F. - A.I.	426776-011	
	D.I.	426776-031	

4030 PUMP PARTS

CENTERLINE DISCHARGE

"L" SIZE 1 5/8" IMPELLER BORE ----- 1 5/8" SHAFT DIAMETER AT COUPLER

2 1/8" MECHANICAL SEAL

ITEM 101 CASING GASKET

PUMP SIZE	DIMENSIONS O.D X I.D. X THICKNESS	PART NUMBER	BAR CODE
10 X 8 X 13	14"X13 3/4"X1/16"	426401-005	
8 X 6 X 15	16 3/8"X15 5/8"X1/16"	426401-008	
10 X 8 X 15			

ITEM 44 BRG. HSG., CAPS. AND WASHER

PUMP SIZE	NO. REQ'D	SIZE	PART NUMBER	BAR CODE
10 X 8 X 13	4	CAPSCREW	911125-110	
		1/2-13NC X 1 1/4" LG		
8 X 6 X 15				
10 X 8 X 15	4	WASHER	927117-100	
		1/2 - 13NC STL - FLAT		

4030 PUMP PARTS

CENTERLINE DISCHARGE

"L" SIZE 1 5/8" IMPELLER BORE ----- 1 5/8" SHAFT DIAMETER AT COUPLER

2 1/8" MECHANICAL SEAL

BEARING FRAME ASSEMBLY

STEEL SHAFT, OIL LUBRICATED

ITEM NUMBER	DESCRIPTION	PART NUMBER	BAR CODE
	BEARING FRAME ASSEMBLY(1)	426775-000	
26	BEARING HOUSING	426492-016	
21	SHAFT & SLEEVE ASSEMBLY	427241-001	
22	INBOARD BEARING	971101-922	
23	OUTBOARD BEARING	971101-923	
24	LOCKWASHER	426364-003	
25	LOCKNUT	426364-004	
29	OUTBOARD BEARING COVER	426502-513	
28	OUTBOARD OIL SEAL	965001-190	
31	OUTBD. BRG. COV."O" RING	961131-249	
42	INBOARD BEARING COVER	426507-515	
43	INBOARD BRG. COV. SCREW 3 REQ'D. #10-24 X 7/16"	916364-107	
43	INBD. BRG. COV. SCREW WASH. 3 REQ'D. #10 STEEL	926156-100	
30	INBOARD OIL SEAL	965002-010	
31	INBD. BRG. COV. "O" RING	961131-249	
32	BEARING CAPSCREWS 3/8 - 16NC X 1 1/4" LG (4 REQ'D)	911121-110	
33	OIL VIEW GAUGE	970224-001	
34	AIR VENT	407444-000	
35	PIPE PLUG 1/4" NPT (1 REQ'D)	937105-201	
36	IMPELLER KEY	428163-714	
36	COUPLER KEY	428163-718	
39	WATER SLINGER	419315-001	

NOTE (1) ITEMS 21 TO 39 INCLUSIVE ARE INCLUDED IN THE BEARING FRAME ASSEMBLY

SEE PAGE 9 FOR COMMON PARTS

4030 PUMP PARTS

CENTERLINE DISCHARGE

"L" SIZE 1 5/8" IMPELLER BORE ----- 1 5/8" SHAFT DIAMETER AT COUPLER

2 1/8" MECHANICAL SEAL

COMMON PARTS, STEEL SHAFT, OIL LUBRICATED			
ITEM NUMBER	DESCRIPTION	PART NUMBER BF & AI	BAR CODE
62	MECHANICAL SEAL ASSEMBLY	975000-985**	
83	IMPELLER WASHER	425742-100	
86	S/S IMPELLER CAPSCREW	911900-180	
110	SUPPORT FOOT	426361-001	
112	SUP. FOOT CAPSCREW UPPER 1/2"-13NC X 1" LG. (1 req'd)	911129-108	
112	SUP. FT. CAPS. WASHER UPPER 1/2" SAE (1 req'd)	927117-100	
114	SUPPORT FOOT JACKSCREW 1/2"-13NC X 1 3/4" LG. (1 req'd)	911129-114	
114	JACKSCREW NUT 1/2"-13NC JAM NUT (1req'd)	913125-100	
124	SUP. FOOT CAPSCREW LOWER 1/2"-13NC X 1 1/2" LG.	911125-112	
124	SUP. FT. CAPS WASHER LOWER 1/2"- FLAT	927118-100	

** For liquids above 200°F/93°C use 9975001-873 (-673 if potable drinking water above 200°F/93°C) For glycols above 30% by weight use 9975001-877 (-878 if above 200°F/93°C)

4030 PUMP PARTS

CENTERLINE DISCHARGE

"L" SIZE 1 5/8" IMPELLER BORE ----- 1 5/8" SHAFT DIAMETER AT COUPLER

2 1/8" MECHANICAL SEAL

BEARING FRAME ASSEMBLY

STAINLESS STEEL SHAFT, OIL LUBRICATED

ITEM NUMBER	DESCRIPTION	PART NUMBER	BAR CODE
	BEARING FRAME ASSEMBLY(1)	426775-071	
26	BEARING HOUSING	426492-016	
21	SHAFT & SLEEVE ASSEMBLY	427241-071	
22	INBOARD BEARING	971101-922	
23	OUTBOARD BEARING	971101-923	
24	LOCKWASHER	426364-003	
25	LOCKNUT	426364-004	
29	OUTBOARD BEARING COVER	426502-513	
28	OUTBOARD OIL SEAL	965001-190	
31	OUTBD. BRG. COV."O" RING	961131-249	
42	INBOARD BEARING COVER	426507-515	
43	INBOARD BRG. COV. SCREW 3 REQ'D. #10-24 X 7/16"	916364-107	
43	INBD. BRG. COV. SCREW WASH. 3 REQ'D. #10 STEEL	926156-100	
30	INBOARD OIL SEAL	965002-010	
31	INBD. BRG. COV. "O" RING	961131-249	
32	BEARING CAPSCREWS 3/8 - 16NC X 1 1/4" LG (4 REQ'D)	911121-110	
33	OIL VIEW GAUGE	970224-001	
34	AIR VENT	407444-000	
35	PIPE PLUG 1/4" NPT (1 REQ'D)	937105-201	
36	IMPELLER KEY	428163-714	
36	COUPLER KEY	428163-718	
39	WATER SLINGER	419315-001	

NOTE (1) ITEMS 21 TO 39 INCLUSIVE ARE INCLUDED IN THE BEARING FRAME ASSEMBLY

SEE PAGE 11 FOR COMMON PARTS

4030 PUMP PARTS

CENTERLINE DISCHARGE

"L" SIZE 1 5/8" IMPELLER BORE ----- 1 5/8" SHAFT DIAMETER AT COUPLER

2 1/8" MECHANICAL SEAL

COMMON PARTS, S/S SHAFT, OIL LUBRICATED			
ITEM NUMBER	DESCRIPTION	PART NUMBER BF & AI	BAR CODE
62	MECHANICAL SEAL ASSEMBLY	975000-985**	
83	IMPELLER WASHER	425742-100	
86	S/S IMPELLER CAPSCREW	911900-180	
110	SUPPORT FOOT	426361-001	
112	SUP. FOOT CAPSCREW UPPER 1/2"-13NC X 1" LG. (1 req'd)	911129-108	
112	SUP. FT. CAPS. WASHER UPPER 1/2" SAE (1 req'd)	927117-100	
114	SUPPORT FOOT JACKSCREW 1/2"-13NC X 1 3/4" LG. (1 req'd)	911129-114	
114	JACKSCREW NUT 1/2"-13NC JAM NUT (1req'd)	913125-100	
124	SUP. FOOT CAPSCREW LOWER 1/2"-13NC X 1 1/2" LG.	911125-112	
124	SUP. FT. CAPS WASHER LOWER 1/2"- FLAT	927118-100	

** For liquids above 200°F/93°C use 9975001-873 (-673 if potable drinking water above 200°F/93°C) For glycols above 30% by weight use 9975001-877 (-878 if above 200°F/93°C)

4030 PUMP PARTS

CENTERLINE DISCHARGE

"L" SIZE 1 5/8" IMPELLER BORE ----- 1 5/8" SHAFT DIAMETER AT COUPLER

2 1/8" MECHANICAL SEAL

COUPLER HALF SELECTION TABLE

(WOODS TYPE)

MOTOR FRAME SIZE	MOTOR	FLANGE PART NUMBER	WOODS SIZE	BAR CODE
	FLANGE			
	BORE			
	PUMP			
284TS-286TS	1 5/8"	975000-880	11S	
	X			
	1 5/8"	975000-880	11S	
284T-286T 324TS-326TS 364TS-365TS	1 7/8"	975000-881	11S	
	X			
	1 5/8"	975000-880	11S	
324T-326T 404TS-405TS	2 1/8"	975000-882	11S	
	X			
	1 5/8"	975000-880	11S	
364T-365T	2 3/8"	975000-883	11S	
	X			
	1 5/8"	975000-880	11S	
444TS-445TS 447TS	2 3/8"	975000-885	10S	
	X			
	1 5/8"	975000-884	10S	
404T-405T	2 7/8"	975000-886	10S	
	X			
	1 5/8"	975000-884	10S	
444T-445T 447T-448T	3 3/8"	975000-887	10S	
	X			
	1 5/8"	975000-884	10S	

COUPLER INSERTS ON PAGE 13

4030 PUMP PARTS

CENTERLINE DISCHARGE

"L" SIZE 1 5/8" IMPELLER BORE ----- 1 5/8" SHAFT DIAMETER AT COUPLER

2 1/8" MECHANICAL SEAL

COUPLER INSERT SELECTION TABLE

(WOODS TYPE)

COUPLER INSERT SIZE	MOTOR FRAME SIZE	INSERT NUMBER	PART NUMBER	BAR CODE
11S	284T-286T	11E	975000-809	
	324T-326T			
	324TS-326TS			
	364T-365T			
	364TS-365TS			
	404TS-405TS			
10S	404T-405T	10H	975000-808	
	444T-445T			
	444TS-445TS			
	447T-449T			
	447TS			