

PRODUCT INFORMATION PACKET

Model No: 048A17T119
Catalog No: X032
1/2,1625,TENV,48Y,1/60/115/230
Single Phase



Regal and Marathon are trademarks of Regal Beloit Corporation or one of its affiliated companies.
©2018 Regal Beloit Corporation, All Rights Reserved. MC017097E





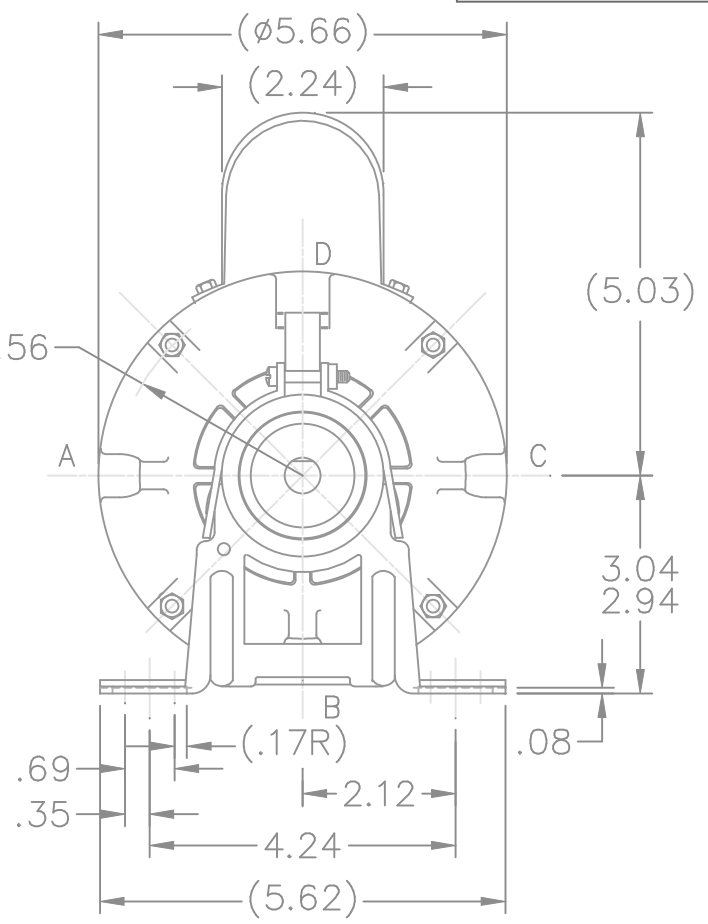
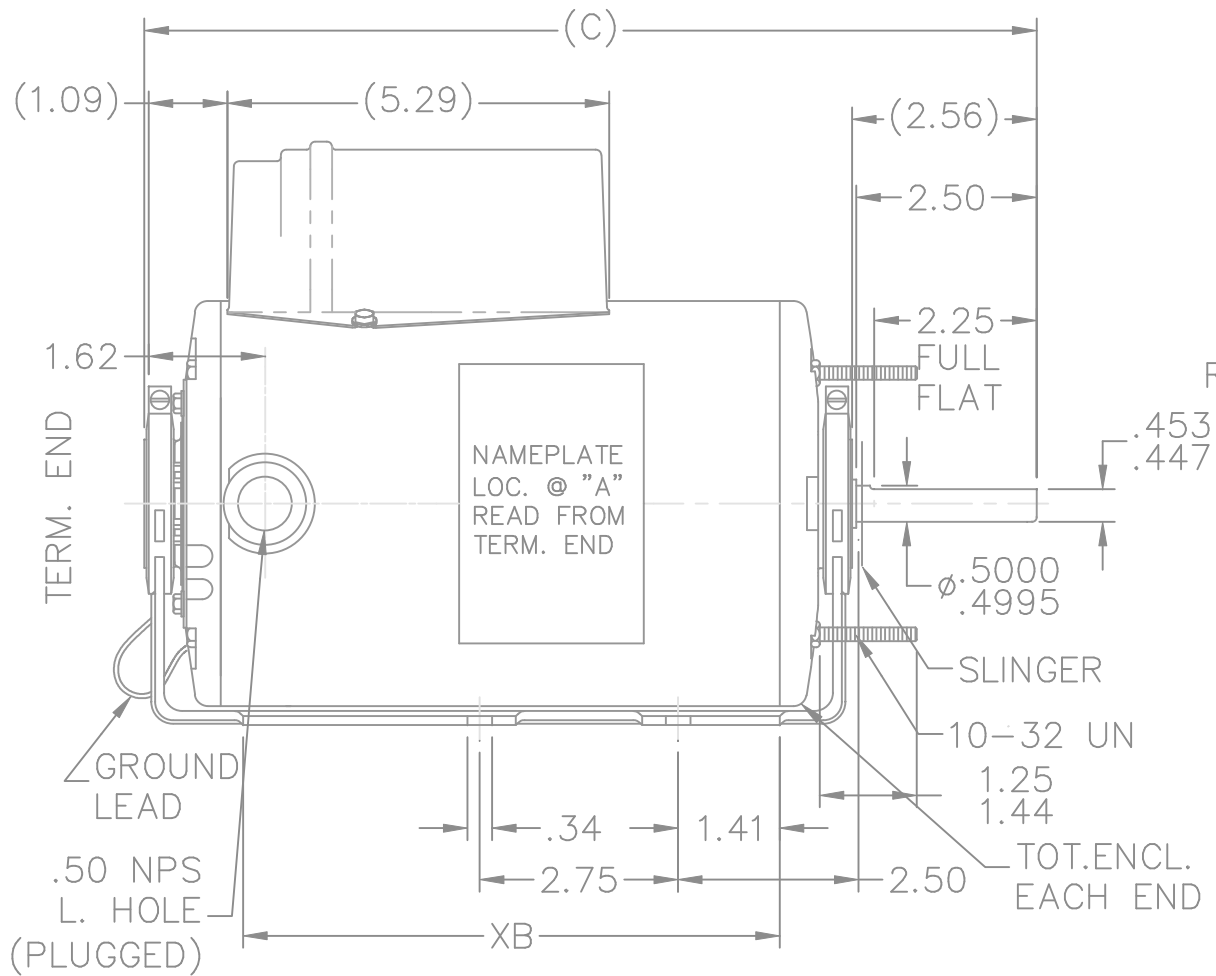
Nameplate Specifications

Output HP	0.50 Hp	Output KW	0.37 kW
Frequency	60 Hz	Voltage	115/230 V
Current	5.4/2.7 A	Speed	1625 rpm
Service Factor	1	Phase	1
Efficiency	72 %	Duty	Continuous
Insulation Class	B	Design Code	NO DESIGN CODE
KVA Code	B	Frame	48Y
Enclosure	Totally Enclosed Air Over	Overload Protector	Auto Lock Rotor Only
Ambient Temperature	40 °C	Drive End Bearing Size	6203
Opp Drive End Bearing Size	6203	UL	Recognized
CSA	Y	CE	N
IP Code	43		

Technical Specifications

Electrical Type	Permanent Split Capacitor	Starting Method	Across The Line
Poles	4	Rotation	Selective Counterclockwise
Mounting	Resilient Base - Extended Studs	Motor Orientation	Horizontal
Drive End Bearing	Ball	Opp Drive End Bearing	Ball
Frame Material	Rolled Steel	Shaft Type	Single Special Extension
Overall Length	11.81 in	Frame Length	7.25 in
Shaft Diameter	0.500 in	Shaft Extension	2.56 in
Assembly/Box Mounting	F1 Only		
Outline Drawing	A-SS75578-725	Connection Diagram	A-EE9057R

This is an uncontrolled document once printed or downloaded and is subject to change without notice. Date Created: 06/29/2018

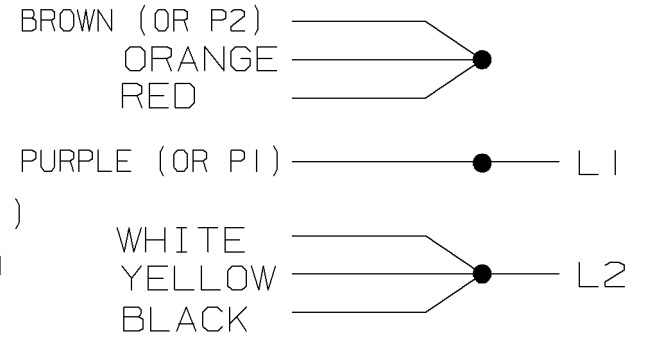


DASH	FR.	XB	C	DASH	FR.	XB	C
650	48	6.69	11.06	725	48	7.44	11.81
675	48	6.94	11.31				
700	48	7.19	11.56				

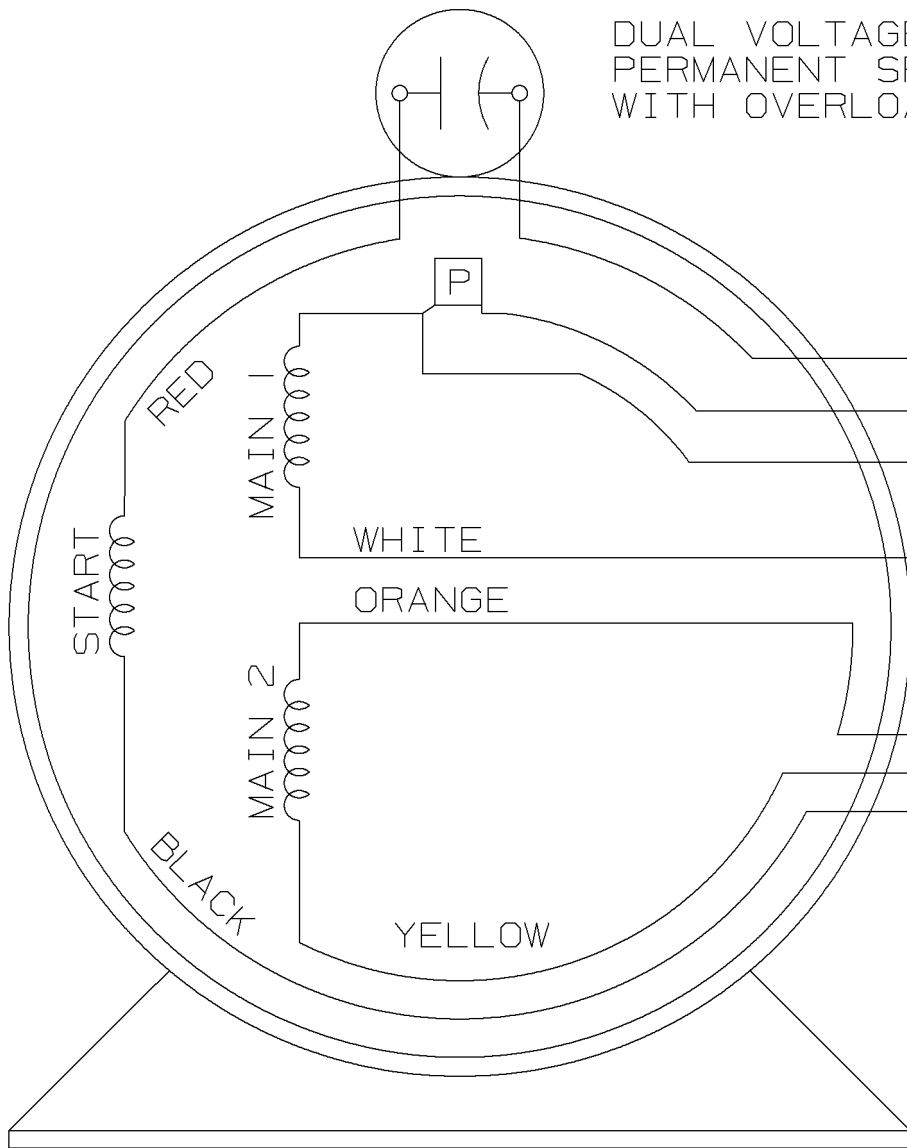
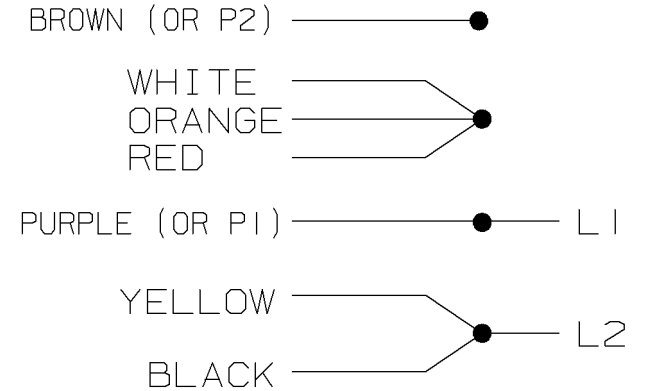
				TOLERANCES UNLESS SPECIFIED			DRAWN RM 06-15-1992			
				DEC.	INCHES		CHK ML 06-15-1992			
				.X	±.1	TITLE OUTLINE MAT'L. FINISH	APPD RJS 06-17-1992			
3	UPDATED DRAWING		TJW 04/20/2007	.XX	±.03		SCALE 3=8			
2	REDRAWN IN AUTOCAD		TAT 05-09-2005	ML .XXX	±.005		REF			
1	NEW DRAWING 3923767		RM 06-17-1992	.XXXX	±.0005		FMF			
NO.	REVISION		BY & DATE	CHK	ANG		PREV			
	THIS DRAWING IN DESIGN AND DETAIL IS OUR PROPERTY AND MUST NOT BE USED EXCEPT IN CONNECTION WITH OUR WORK ALL RIGHTS OF DESIGN AND INVENTION ARE RESERVED THIS IS AN ELECTRONICALLY GENERATED DOCUMENT - DO NOT SCALE THIS PRINT			RFP		CAD FILE ss75578	SIZE A	DRAWING NO. SS75578	PAGE OF	REV. 3
				DIST WP						

DUAL VOLTAGE MOTOR
PERMANENT SPLIT CAPACITOR
WITH OVERLOAD PROTECTION

LOW VOLTAGE
CCW ROTATION



HIGH VOLTAGE
CCW ROTATION



TO REVERSE ROTATION, EITHER
VOLTAGE, INTERCHANGE RED WITH BLACK

3	08-08-1993	CORRECTED LOW VOLTAGE CONN.	DA	✓ MAX. SURFACE ROUGHNESS UNLESS NOTED OTHERWISE	UNLESS OTHERWISE SPECIFIED DIMENSIONS ARE IN INCHES TOL. ON XX± XXX±.005 XXXX±.0005 ANGLES±			
2	08-12-1992	REVISED PROT. LEADS CN 14441	RM	MATL SPEC				DRAWN BY RM 08-27-1991
1	08-27-1991	NEW DRAWING 3834311	RM	FINISH				CHKD BY ML 08-30-1991
REV	DATE	CHANGE	NAME	REFERENCE DRW.				WAUSAU, WISCONSIN 54401
				PART NAME CONNECTION DIAGRAM				

SHOP BOOK

PURCHASED

DISTRIBUTION - WA - LB - WP - LM - BR

CADD FILE NO.

EE9057R

```
ERROR: syntaxerror  
OFFENDING COMMAND: --nostringval--
```

```
STACK:
```

```
/terminate  
-dictionary-  
/Pscript_WinNT_Compact  
-dictionary-
```


** Subject to change without notice.