

PRODUCT INFORMATION PACKET

Model No: 048A17T2005
Catalog No: X920
1/4,1725,TENV,48Z,1/60/115/230
Pedestal Fan



Regal and Marathon are trademarks of Regal Beloit Corporation or one of its affiliated companies.

©2018 Regal Beloit Corporation, All Rights Reserved. MC017097E

Nameplate Specifications

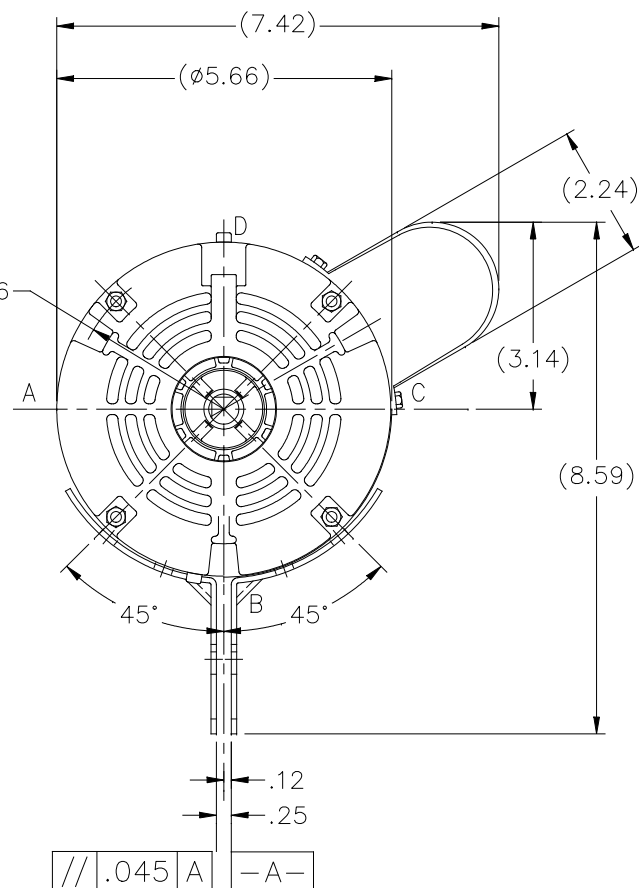
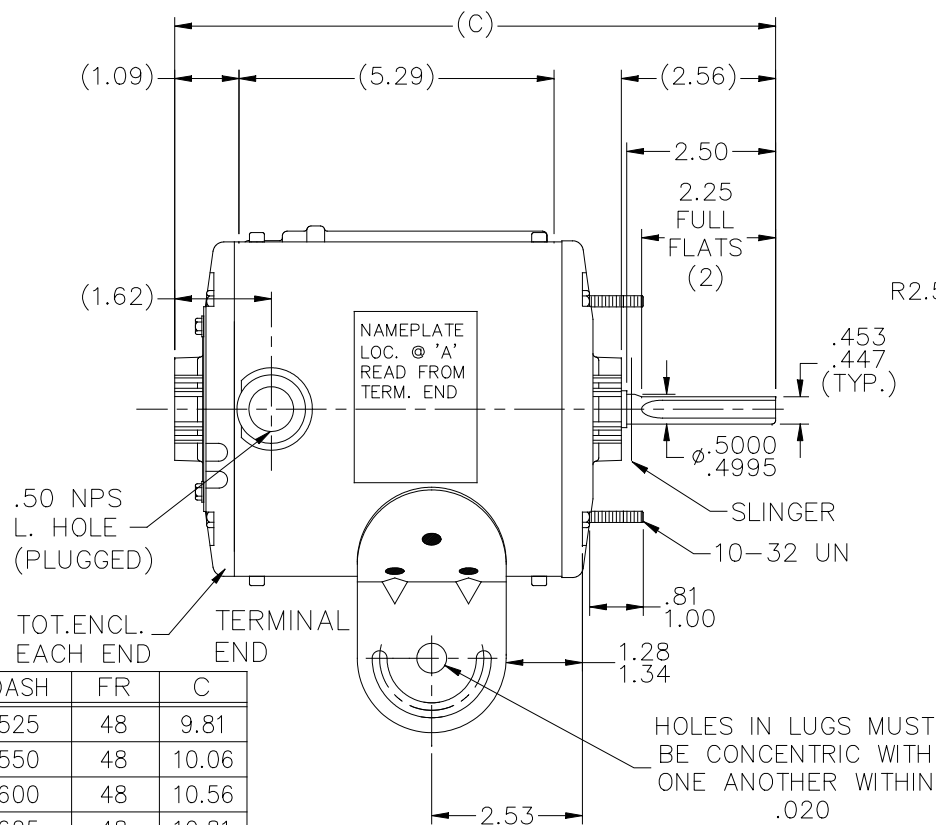
Output HP	0.25 Hp	Output KW	0.19 kW
Frequency	60 Hz	Voltage	115/230 V
Current	3.6/1.8 A	Speed	1625 rpm
Service Factor	1	Phase	1
Efficiency	68 %	Duty	Continuous
Insulation Class	B	Design Code	NO DESIGN CODE
KVA Code	F	Frame	48Z
Enclosure	Totally Enclosed Non Ventilated	Overload Protector	Automatic Lock Rotor Only
Ambient Temperature	40 °C	Drive End Bearing Size	6203
Opp Drive End Bearing Size	6203	UL	Recognized
CSA	Y	CE	Y
IP Code	43		

Technical Specifications

Electrical Type	Permanent Split Capacitor	Starting Method	Across The Line
Poles	4	Rotation	Selective Counterclockwise
Mounting	Round - Swing Arm	Motor Orientation	Horizontal
Drive End Bearing	Ball	Opp Drive End Bearing	Ball
Frame Material	Rolled Steel	Shaft Type	Single Special Extension
Overall Length	10.56 in	Frame Length	6.00 in
Shaft Diameter	0.500 in	Shaft Extension	2.56 in
Assembly/Box Mounting	F1 Only		
Outline Drawing	A-SS403014-600	Connection Diagram	A-EE9057T

This is an uncontrolled document once printed or downloaded and is subject to change without notice. Date Created: 10/08/2018

SS403014



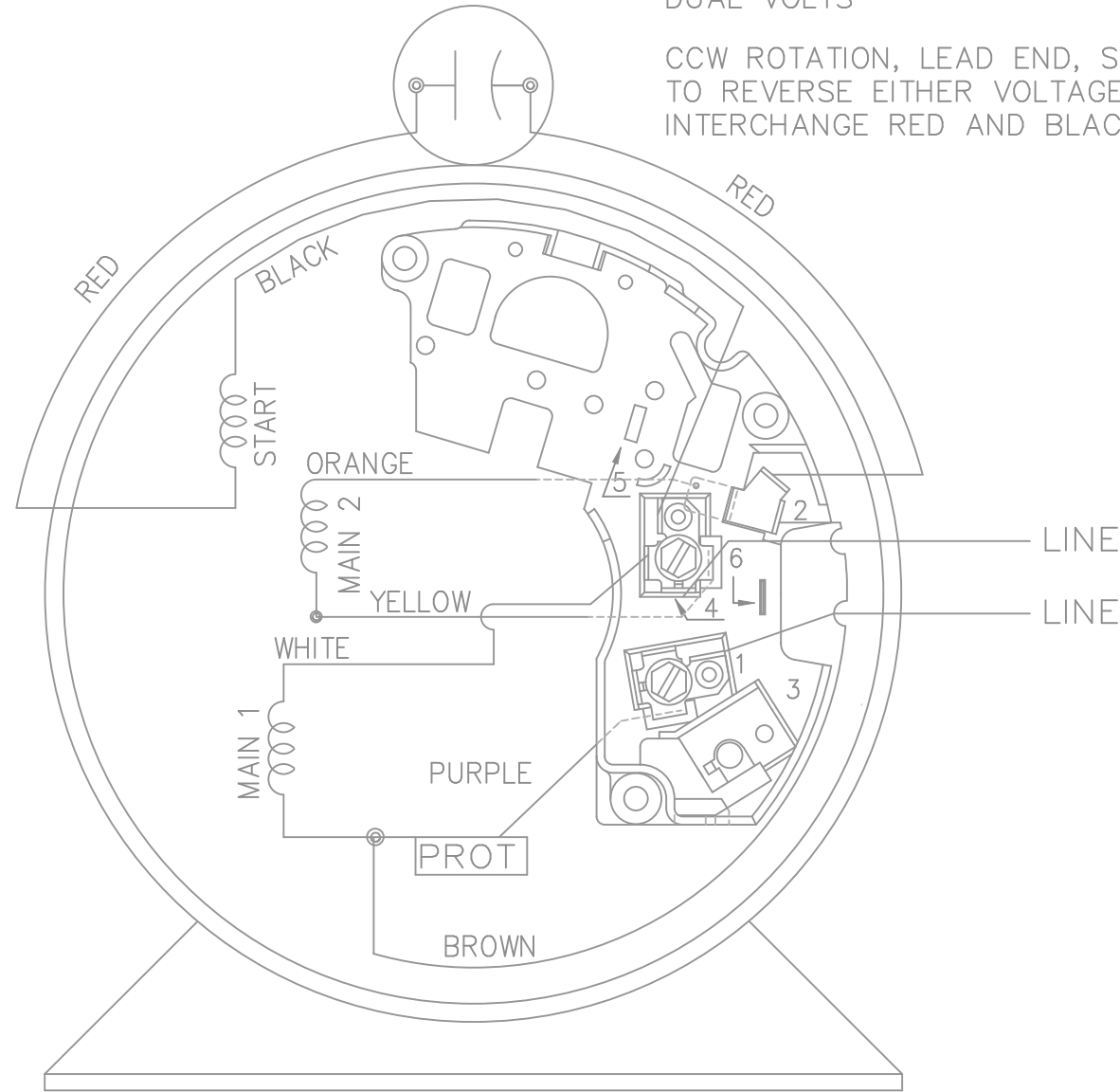
TOTALLY ENCLOSED MOTOR
FULLY GASKETED

DASH	FR	C
525	48	9.81
550	48	10.06
600	48	10.56
625	48	10.81
650	48	11.06
675	48	11.31
575	48	10.31

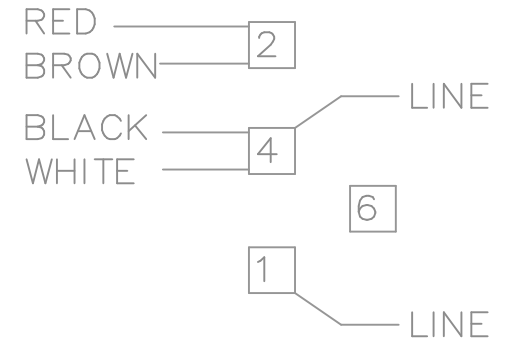
NO.	REVISION	BY & DATE	CHK	ANG	TOLERANCES UNLESS SPECIFIED		REGAL™ Regal Beloit America, Inc.	DRAWN BJV 11-22-1999	
					DEC.	INCHES			
4	ADDED DASH 575	MVG 02/21/18	SM	.X	±.1			CHK ML 11-23-1999	
3	REDRAWN IN AUTOCAD	TAT 10-15-2004	ML	.XX	±.03			APPD SAT 11-24-1999	
2	ROT. CAP. 60° & ADD'D DRAIN HOLE PLUGS MU27937	NJS 11-03-2000		.XXX	±.005		TITLE OUTLINE 48 FR.	SCALE 3=8	
1	NEW DRAWING MU27937	BJW 11-24-1999		.XXXX	±.0005		MAT'L.	REF	
				ANG	±7'30"		FINISH	FMF	
				RFP		CAD FILE ss403014		PREV	
THIS DRAWING IN DESIGN AND DETAIL IS OUR PROPERTY AND MUST NOT BE USED EXCEPT IN CONNECTION WITH OUR WORK ALL RIGHTS OF DESIGN AND INVENTION ARE RESERVED THIS IS AN ELECTRONICALLY GENERATED DOCUMENT - DO NOT SCALE THIS PRINT							SIZE A	DRAWING NO. SS403014	PAGE 3 OF 4
							DIST WP		REV. 4

DUAL VOLTS

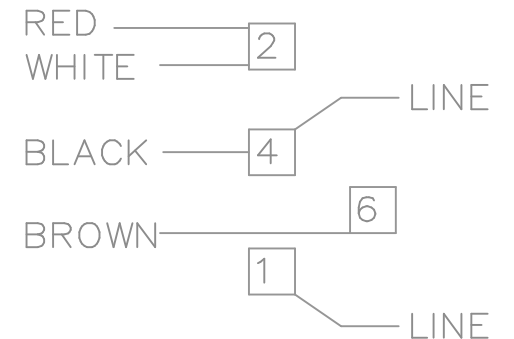
CCW ROTATION, LEAD END, SHOWN TO REVERSE EITHER VOLTAGE INTERCHANGE RED AND BLACK LEADS.



LOW VOLTAGE



HIGH VOLTAGE



VIEW OF TERMINAL END

			TOLERANCES UNLESS SPECIFIED			DRAWN RM 02-21-1992				
			DEC.	INCHES		CHK ML 09-21-1992				
			.X	± -		APPD GK 09-23-1992				
3	REDRAWN IN AUTOCAD	NJS	.XX	± -	TITLE CONNECTION DIAGRAM	SCALE 1=1				
2	ADDED ROTATION CN 23975-249	MH 04-07-1998	.XXX	± -		REF				
1	NEW DRAWING CN 14642	RM 09-23-1992	.XXXX	± -	MAT'L.	FMF				
NO.	REVISION	BY & DATE	CHK	ANG ± -		FINISH	PREV			
THIS DRAWING IN DESIGN AND DETAIL IS OUR PROPERTY AND MUST NOT BE USED EXCEPT IN CONNECTION WITH OUR WORK ALL RIGHTS OF DESIGN AND INVENTION ARE RESERVED THIS IS AN ELECTRONICALLY GENERATED DOCUMENT - DO NOT SCALE THIS PRINT			RFP		CAD FILE EE9057T	SIZE A	DRAWING NO. EE9057T	PAGE	OF	REV. 3
			DIST	WP						

