

PRODUCT INFORMATION PACKET



Model No: 048S17D2117
Catalog No: B607
1/3,1725,DP,48Z,1/60/277
Fan and Blower



Regal and Marathon are trademarks of Regal Beloit Corporation or one of its affiliated companies.
©2018 Regal Beloit Corporation, All Rights Reserved. MC017097E

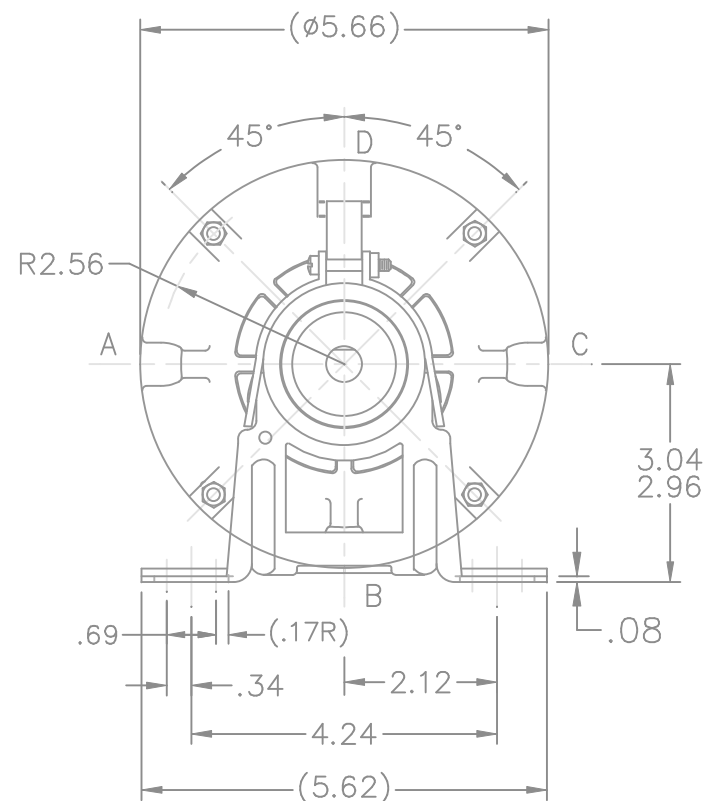
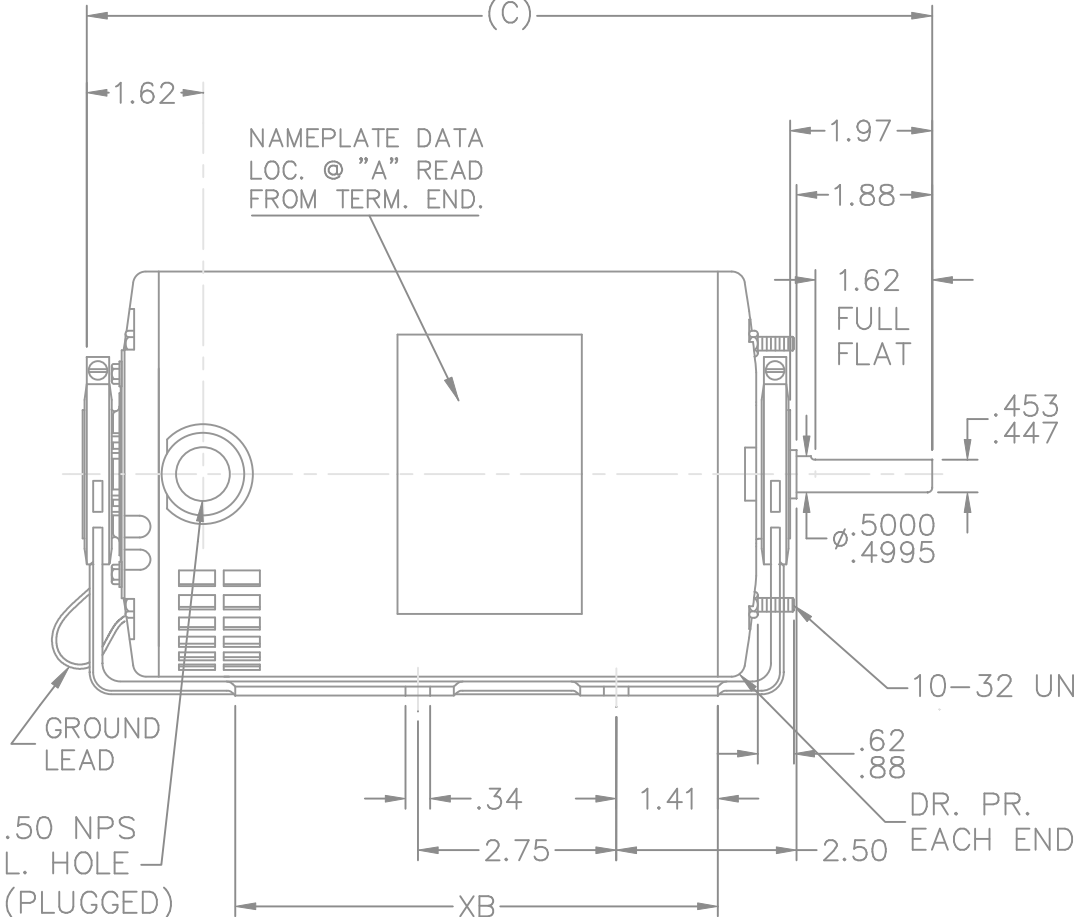


Nameplate Specifications

Output HP	0.33 Hp	Output KW	0.25 kW
Frequency	60 Hz	Voltage	277 V
Current	2.5 A	Speed	1725 rpm
Service Factor	1.35	Phase	1
Efficiency	62 %	Duty	Continuous
Insulation Class	B	Design Code	NO DESIGN CODE
KVA Code	M	Frame	48Z
Enclosure	Drip Proof	Overload Protector	No
Ambient Temperature	40 °C	Drive End Bearing Size	6203
Opp Drive End Bearing Size	6203	UL	Recognized
CSA	Y	CE	N
IP Code	22		


Technical Specifications

Electrical Type	Split Phase	Starting Method	Across The Line
Poles	4	Rotation	Selective Counterclockwise
Mounting	Resilient Base - Extended Studs	Motor Orientation	Horizontal
Drive End Bearing	Ball	Opp Drive End Bearing	Ball
Frame Material	Rolled Steel	Shaft Type	Single Special Extension
Overall Length	9.72 in	Frame Length	5.75 in
Shaft Diameter	0.500 in	Shaft Extension	1.97 in
Assembly/Box Mounting	F1 Only		
Outline Drawing	A-SS75570-575	Connection Diagram	A-EE7195AS

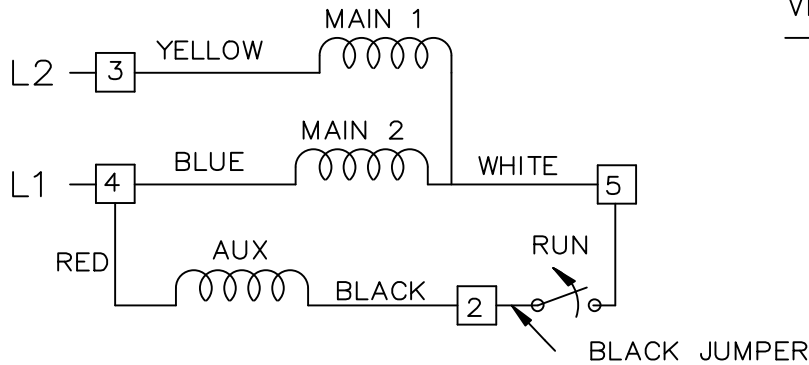


TERM. END

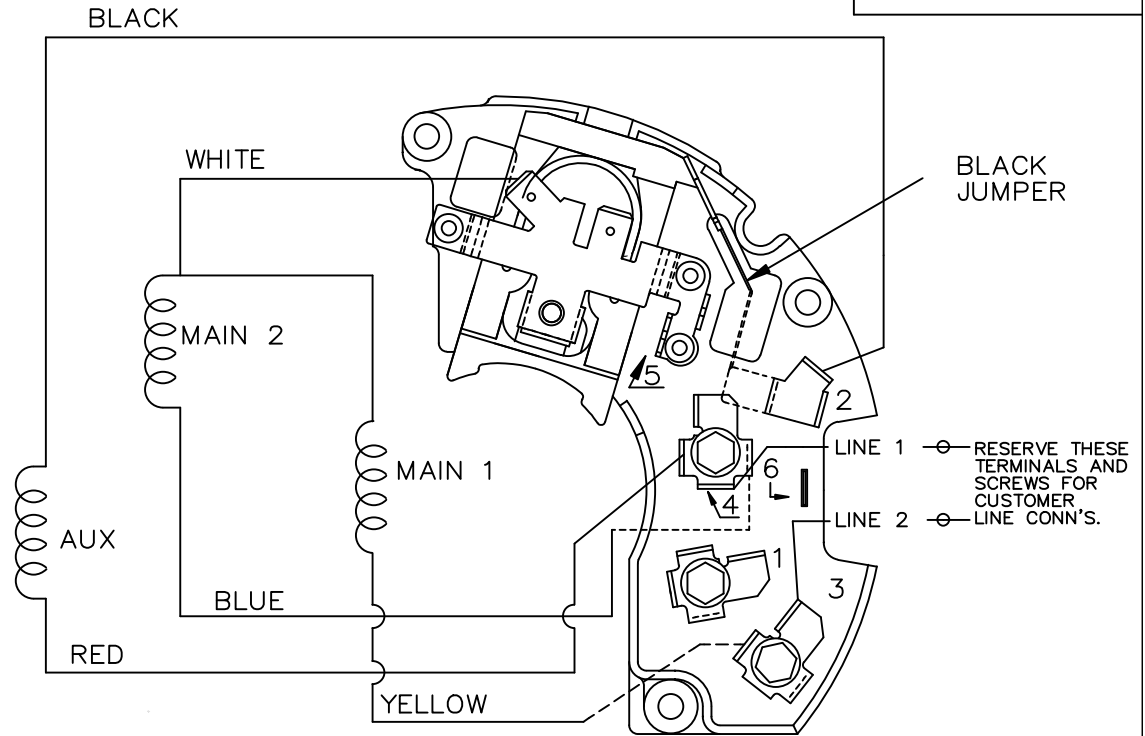
DASH	FRAME	XB	C	DASH	FRAME	XB	C
550	48	5.69	9.47	650	48	6.69	10.47
575	48	5.94	9.72				
625	48	6.44	10.22				

				TOLERANCES UNLESS SPECIFIED				DRAWN RM 05-26-1992				
				DEC.	INCHES			CHK ML 05-26-1992				
				.X	±.1			APPD GK 05-26-1992				
3	UPDATED DRAWING	TJW 04/20/2007		.XX	±.03	TITLE OUTLINE			SCALE 3=8			
2	REDRAWN IN AUTOCAD	TAT 08-03-2004	ML	.XXX	±.005				REF			
1	NEW DRAWING 3917460	RM 05-28-1992		.XXXX	±.0005	MAT'L.			FMF			
NO.	REVISION	BY & DATE	CHK	ANG	±7'30"	FINISH			PREV			
THIS DRAWING IN DESIGN AND DETAIL IS OUR PROPERTY AND MUST NOT BE USED EXCEPT IN CONNECTION WITH OUR WORK ALL RIGHTS OF DESIGN AND INVENTION ARE RESERVED THIS IS AN ELECTRONICALLY GENERATED DOCUMENT – DO NOT SCALE THIS PRINT				RFP		CAD FILE ss75570		SIZE	DRAWING NO.	PAGE	OF	REV.
				DIST WP				A	SS75570		3	

SINGLE HIGH VOLTAGE CAPACITOR START
REVERSIBLE ON TERM BOARD
NO OVERLOAD PROTECTION




VIEWING TERM END



CCW ROTATION SHOWN

TO REVERSE ROTATION INTERCHANGE
RED LEAD WITH BLACK LEAD

				TOLERANCES UNLESS SPECIFIED		 REGAL-BELOIT CORPORATION	DRAWN TJW 6/28/2010						
				DEC.	INCHES		CHK CTO 6/28/2010						
				.X	± -		APPD EH 6/28/2010						
				.XX	± -		SCALE						
				.XXX	± -		REF						
				.XXXX	± -		FMF ISAAC10-2159						
NO.	REVISION	BY & DATE	CHK	ANG	± -	FINISH			PREV				
THIS DRAWING IN DESIGN AND DETAIL IS OUR PROPERTY AND MUST NOT BE USED EXCEPT IN CONNECTION WITH OUR WORK ALL RIGHTS OF DESIGN AND INVENTION ARE RESERVED THIS IS AN ELECTRONICALLY GENERATED DOCUMENT - DO NOT SCALE THIS PRINT			RFP		6/28/2010	CAD FILE		EE7195AS	SIZE	DRAWING NO.	PAGE	OF	REV.
			DIST					A	EE7195AS				

CERTIFICATION DATA SHEET

Model#: 48S17D2117 H **WINDING#:** SE484183 NONE 4
CONN. DIAGRAM: A-EE7195AS **ASSEMBLY:** F1 ONLY
OUTLINE: A-SS75570-575

TYPICAL MOTOR PERFORMANCE DATA

HP	KW	SYNC. RPM	F.L. RPM	FRAME	ENCLOSURE	KVA CODE	DESIGN
1/3	0.25	1800	1725	48Z	DP	M	NO DESIGN CODE

PH	Hz	VOLTS	FL AMPS	START TYPE	DUTY	INSL	S.F	AMB°C	ELEVATION
1	60	277	2.5	ACROSS THE LINE	CONTINUOUS	B3	1.35	40	3300

FULL LOAD EFF: 62	3/4 LOAD EFF: 59.3	1/2 LOAD EFF: 51.9	GTD. EFF	ELEC. TYPE	NO LOAD AMPS
FULL LOAD PF: 58	3/4 LOAD PF: 51.5	1/2 LOAD PF: 42.8	-	SPLIT PHASE	2

F.L. TORQUE	LOCKED ROTOR AMPS	L.R. TORQUE	B.D. TORQUE	F.L. RISE°C
16.3 LB-FT	12.3	20.4 LB-FT -	39.2 LB-FT -	45

SOUND PRESSURE @ 3 FT.	SOUND POWER	ROTOR WK^2	MAX. WK^2	SAFE STALL TIME	STARTS /HOUR	APPROX. MOTOR WGT
- dBA	- dBA	- LB-FT^2	- LB-FT^2	- SEC.	-	- LBS.

*** SUPPLEMENTAL INFORMATION ***

DE BRACKET TYPE	ODE BRACKET TYPE	MOUNT TYPE	ORIENTATION	SEVERE DUTY	HAZARDOUS LOCATION	DRIP COVER	SCREENS	PAINT
STANDARD	STANDARD	RESILIENT BASE- EXTENDED STUDS	HORIZONTAL	FALSE	NONE	FALSE	NONE	GRAY (POWDER)

BEARINGS		GREASE	SHAFT TYPE	SPECIAL DE	SPECIAL ODE	SHAFT MATERIAL	FRAME MATERIAL
DE	OPE						
BALL	BALL	MULTEMP SRL	SGL SPL EXT	0.500 x 1.88 IN SEF WITH 1.62 IN FULL FLAT	NONE	1144 STRESSPROOF (C-223)	ROLLED STEEL
6203	6203						

THERMO-PROTECTORS				THERMISTORS	CONTROL	SPACE /n HEATERS
THERMOSTATS	PROTECTORS	WDG RTDs	BRG RTDs			
NONE	NOT	NONE	NONE	NONE	FALSE	NONE VOLTS

If Inverter equals NONE, contact factory for further information

*
N
O
T
E
S
*

INVERTER TORQUE: NONE			
INV. HP SPEED RANGE: NONE			
ENCODER: NONE			
NONE	NONE		
NONE	NONE	PPR	
BRAKE: NONE NONE			
NONE	P/N	NONE	
NONE	NONE		
NONE FT-LB	NONE V	NONE Hz	

DATE: 06/29/2017 01:14:28 AM
FORM 3531 REV.3 02/07/99

** Subject to change without notice.