

PRODUCT INFORMATION PACKET

marathon®
Motors

Model No: 056C17G15556
Catalog No: G654A
1/2,1800,EPFC,56,1/60/115/208-230
Explosion Proof



Regal and Marathon are trademarks of Regal Beloit Corporation or one of its affiliated companies.
©2018 Regal Beloit Corporation, All Rights Reserved. MC017097E

REGAL

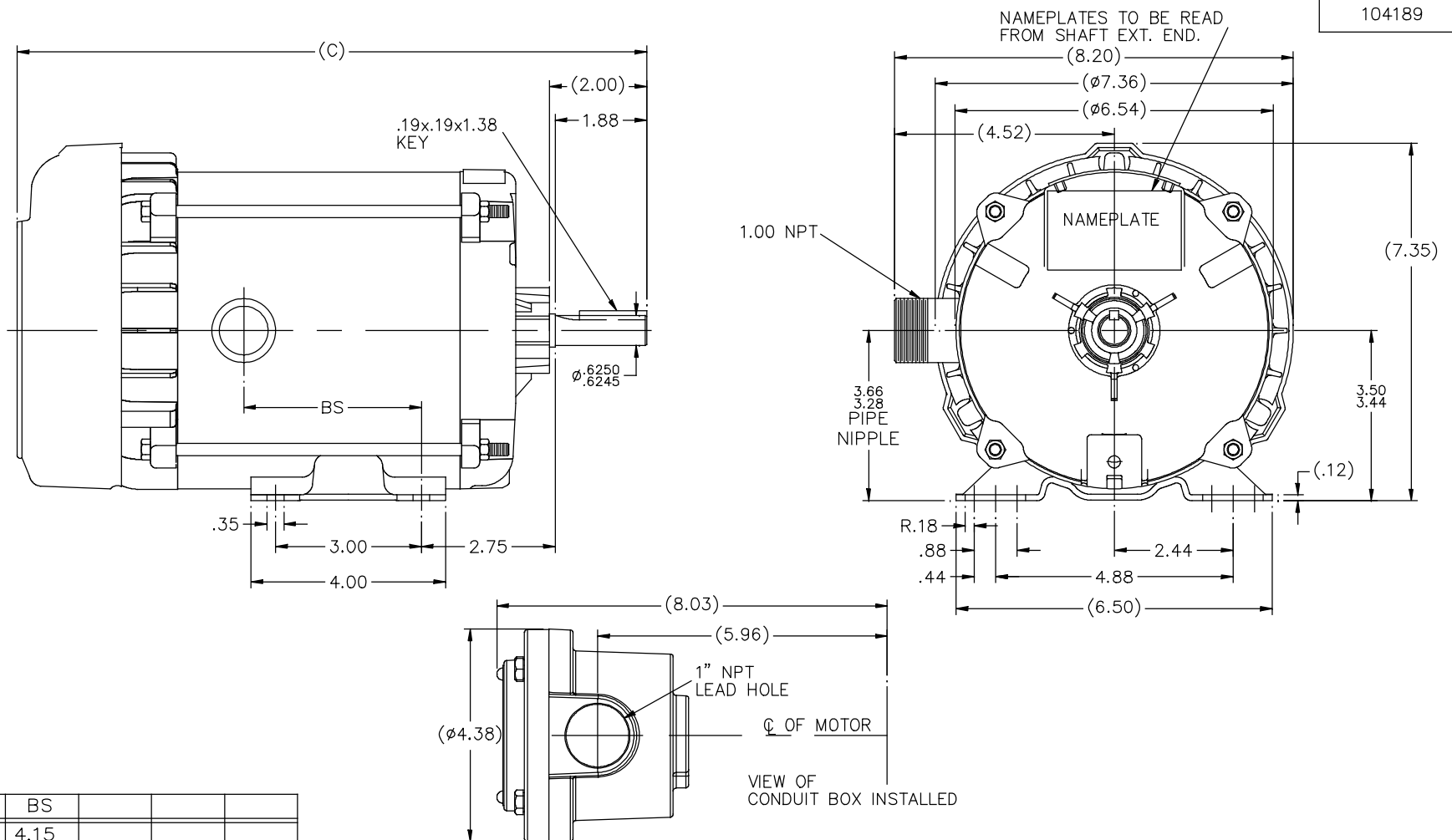


Nameplate Specifications


Output HP	0.50 Hp	Output KW	0.37 kW
Frequency	60 Hz	Voltage	115/208-230 V
Current	8.8/4.2-4.4 A	Speed	1725 rpm
Service Factor	1	Phase	1
Efficiency	66 %	Duty	Continuous
Insulation Class	B	Design Code	NO DESIGN CODE
KVA Code	L	Frame	56
Enclosure	Explosion Proof Fan cooled	Overload Protector	Automatic
Ambient Temperature	40 °C	Drive End Bearing Size	6203
Opp Drive End Bearing Size	6203	UL	Recognized
CSA	N	CE	N
IP Code	54		

Technical Specifications

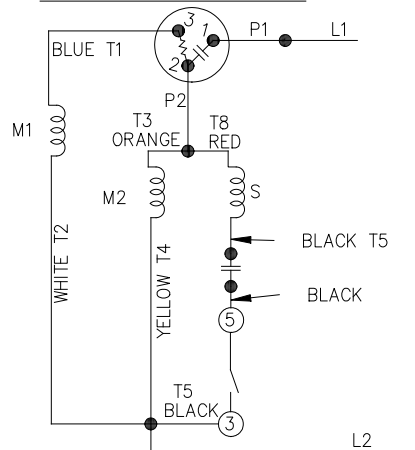
Electrical Type	Capacitor Start Induction Run	Starting Method	Across The Line
Poles	4	Rotation	Selective Counterclockwise
Mounting	Rigid base	Motor Orientation	HORIZONTAL
Drive End Bearing	BALL	Opp Drive End Bearing	BALL
Frame Material	Rolled Steel	Shaft Type	NEMA 56
Overall Length	13.94 in	Frame Length	6.81 in
Shaft Diameter	0.625 in	Shaft Extension	1.88 in
Assembly/Box Mounting	F1 ONLY		
Outline Drawing	104189-681	Connection Diagram	A-102005-84



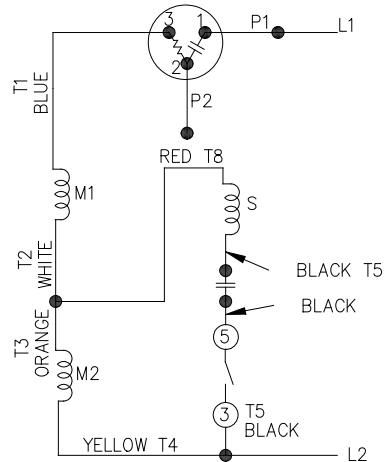
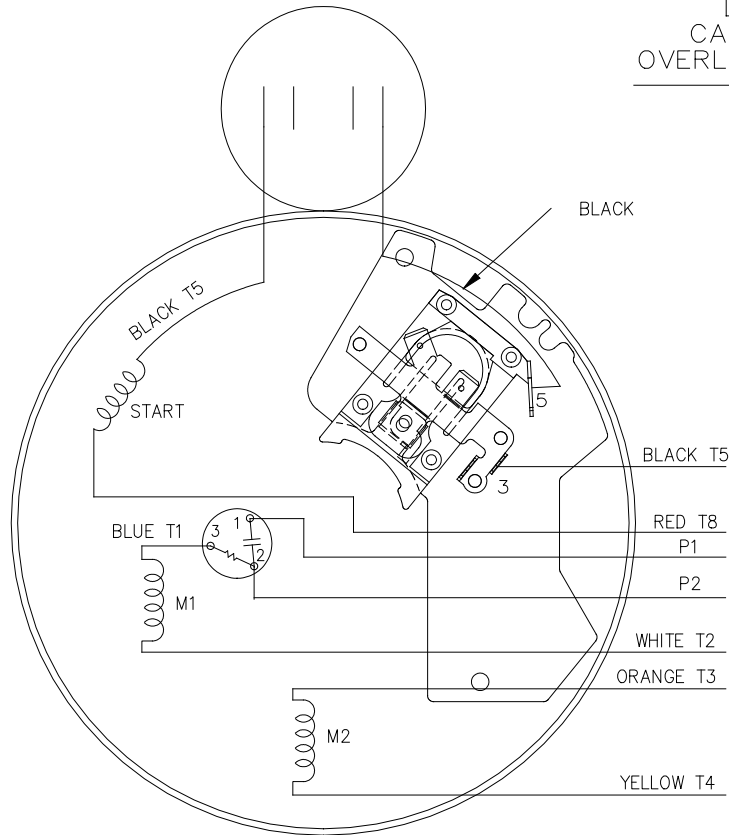
DASH	(C)	BS			
631	13.44	4.15			
681	13.94	4.65			
731	14.44	5.15			
781	14.94	5.65			
831	15.44	6.15			
881	15.94	6.65			
931	16.44	7.15			
981	16.94	7.65			

				TOLERANCES UNLESS SPECIFIED	 Regal Beloit America, Inc.		DRAWN MH 11-20-1996
				DEC. INCHES			CHK ML 12-02-1996
4	COND. BOX INSTALLED VIEW UPDATED PER ECR-0044571	UD 10/15/13	ST X ± .1				APPD GK 12-02-1996
3	REVISED C'BOX PER CN40784A	JJB 02/23/2007	ML JX ±.03		TITLE OUTLINE		SCALE 1=2
2	ADDED CONDUIT BOX VIEW CN 26686	MRB 03-22-1998	.XXX ±.005		56 FR. — EXP. PR. — TEFC — 1ø & 3ø		REF
1	NEW DRAWING CN 23099	MH 12-02-1996	.XXXX ±.0005		MAT'L		FIMF
NO.	REVISION	BY & DATE	CHK ANG ±7°30"		FINISH		PREV
THIS DRAWING IN DESIGN AND DETAIL IS OUR PROPERTY AND MUST NOT BE USED EXCEPT IN CONNECTION WITH OUR WORK ALL RIGHTS OF DESIGN AND INVENTION ARE RESERVED THIS IS AN ELECTRONICALLY GENERATED DOCUMENT — DO NOT SCALE THIS PRINT				RFP	CAD FILE 104189	SIZE B	DRAWING NO. PAGE OF REV. 104189 4
				DIST WP			

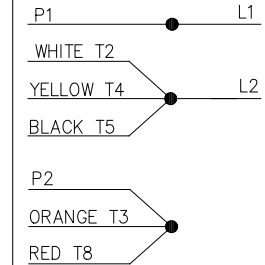
LOW VOLTAGE – C.C.W.



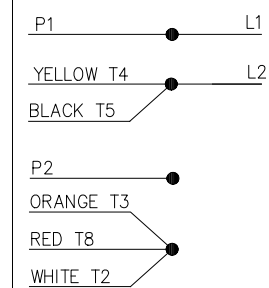
HIGH VOLTAGE – C.C.W.

DUAL VOLTAGE
CAPACITOR START
OVERLOAD SELECT ROT.


LOW VOLT. – C.C.W. ROT.



HIGH VOLT. – C.C.W. ROT.



FOR C.W. ROTATION
EITHER VOLTAGE
INTERCHANGE RED(T8)
WITH BLACK(T5) LEAD

				TOLERANCES UNLESS SPECIFIED		 Regal ™ Regal Beloit America, Inc.	DRAWN PGK 07-16-1996		
				DEC.	INCHES		CHK MRB 07-18-1996		
5	UPDATED TEMPLETE	MVG 12/11/2017	PVR	.X	±.1	TITLE CONNECTION DIAGRAM	APPD GK 07-18-1996		
4	REV'D CONNECTION TO MATCH ROTATION ISAAC 07-2021	JJB 09/05/2007	ML	.XX	±.02		SCALE 5=8		
3	ADDED T NO.'S MU16064	MH 08-09-1997		.XXX	±.005		REF		
2	REDRAWN ON CADD, NO CHANGES	PGK 07-18-1996		.XXXX	±.0005	MAT'L.	FMF		
NO.	REVISION	BY & DATE	CHK	ANG	±7'30"	FINISH	PREV		
THIS DRAWING IN DESIGN AND DETAIL IS OUR PROPERTY AND MUST NOT BE USED EXCEPT IN CONNECTION WITH OUR WORK ALL RIGHTS OF DESIGN AND INVENTION ARE RESERVED THIS IS AN ELECTRONICALLY GENERATED DOCUMENT – DO NOT SCALE THIS PRINT			RFP		CAD FILE 102005_84		SIZE A	DRAWING NO. 102005-84	PAGE OF 5
			DIST WP						