

PRODUCT INFORMATION PACKET

Model No: 056S17D2046
Catalog No: S022
1/2, 1800, DP, 56, 1/60/115
Open Drip Proof (ODP)



Regal and Marathon are trademarks of Regal Beloit Corporation or one of its affiliated companies.
©2018 Regal Beloit Corporation, All Rights Reserved. MC017097E



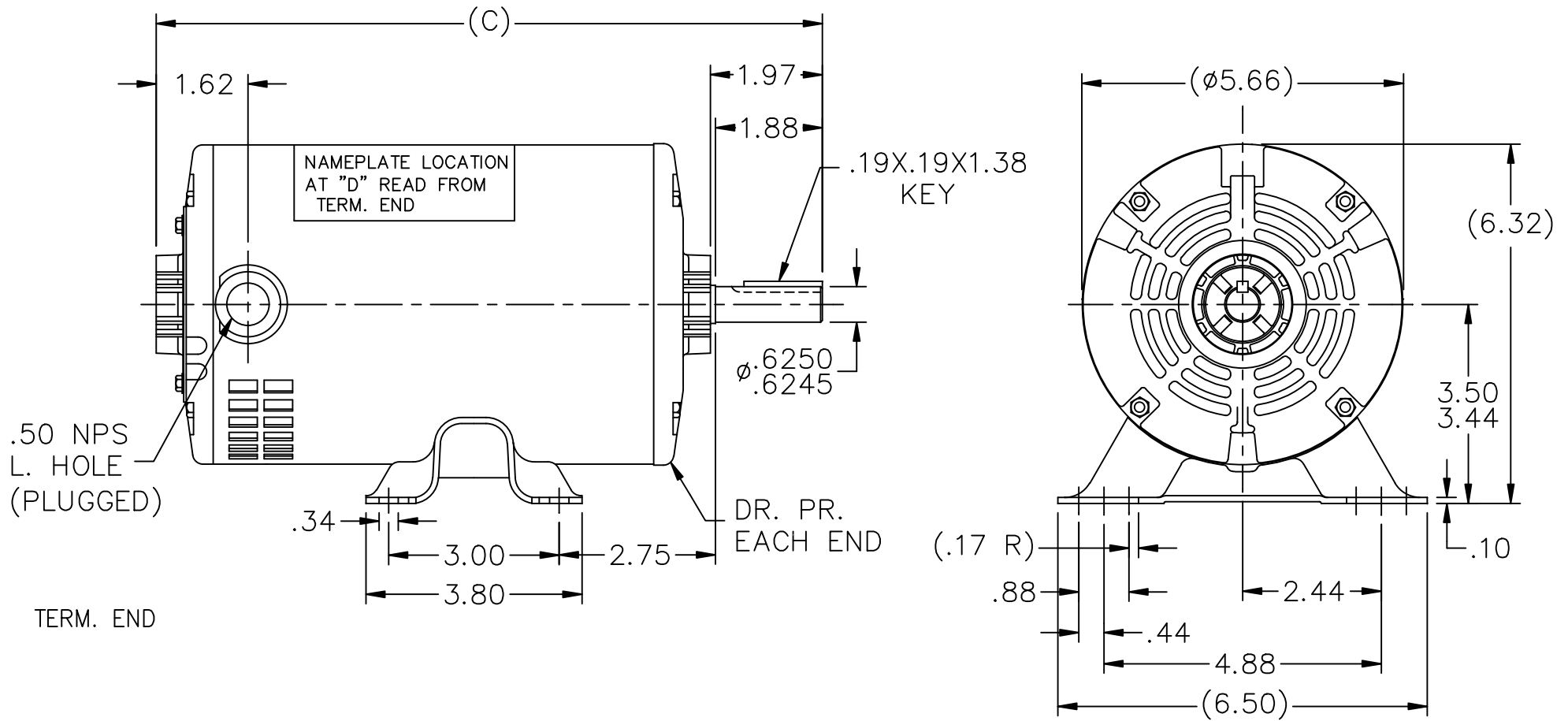


Nameplate Specifications

Output HP	0.50 Hp	Output KW	0.37 kW
Frequency	60 Hz	Voltage	115 V
Current	9.2 A	Speed	1725 rpm
Service Factor	1	Phase	1
Efficiency	60 %	Duty	Continuous
Insulation Class	B	Design Code	NO DESIGN CODE
KVA Code	N	Frame	56
Enclosure	Drip Proof	Overload Protector	No
Ambient Temperature	40 °C	Drive End Bearing Size	6203
Opp Drive End Bearing Size	6203	UL	Recognized
CSA	Y	CE	Y
IP Code	22		

Technical Specifications

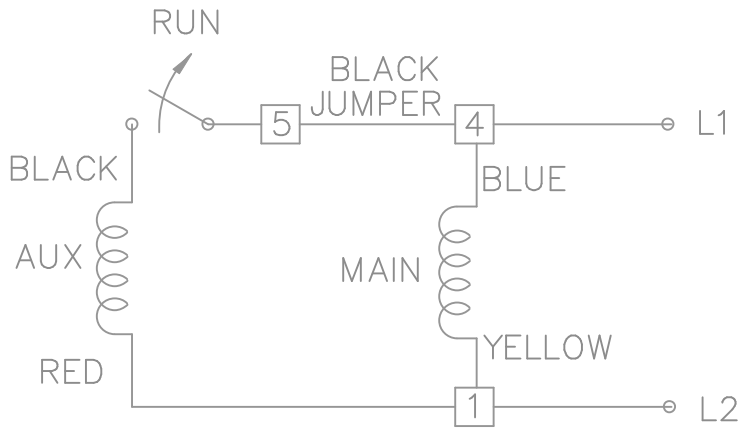
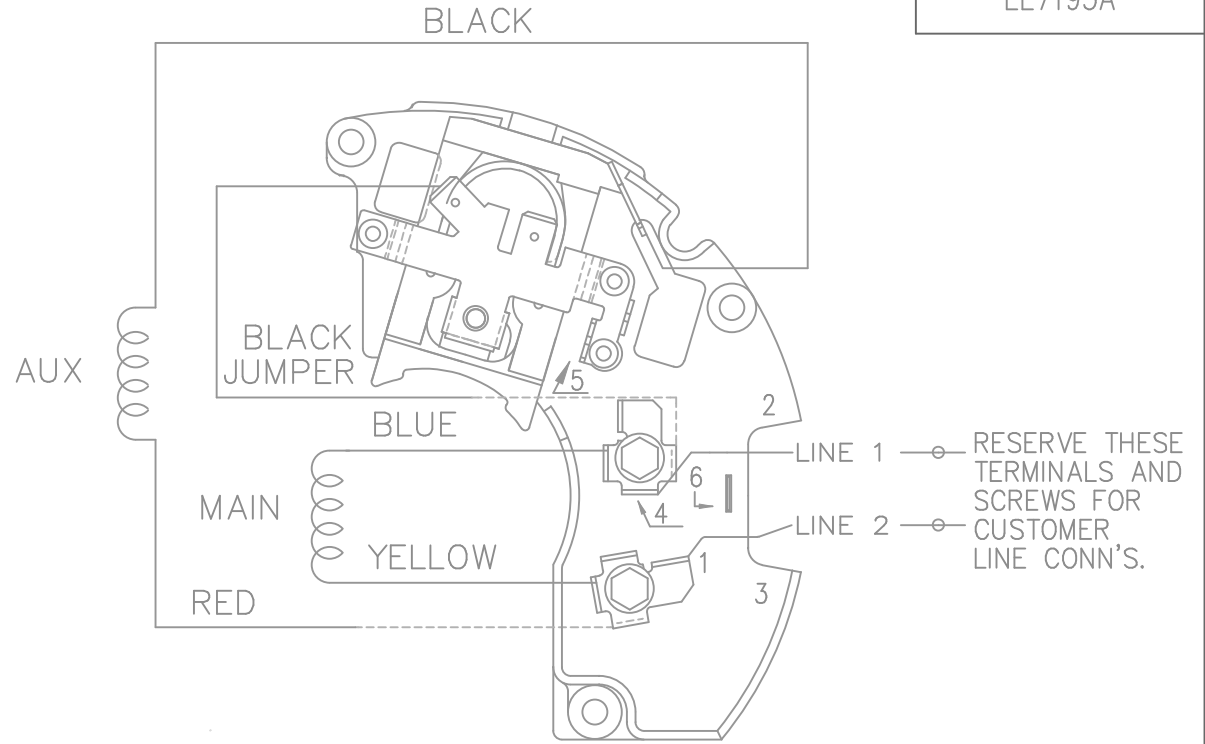
Electrical Type	Split Phase	Starting Method	Across The Line
Poles	4	Rotation	Selective Counterclockwise
Mounting	Rigid base	Motor Orientation	Horizontal
Drive End Bearing	Ball	Opp Drive End Bearing	Ball
Frame Material	Rolled Steel	Shaft Type	NEMA 56
Overall Length	10.22 in	Frame Length	6.25 in
Shaft Diameter	0.625 in	Shaft Extension	1.97 in
Assembly/Box Mounting	F1 Only		
Outline Drawing	A-SS75081-625	Connection Diagram	A-EE7195A



DASH	C	DASH	C	DASH	C
-600	9.97	-700	10.97	-775	11.72
-625	10.22	-725	11.22	-800	11.97
-650	10.47	-750	11.47	-875	12.72

				TOLERANCES UNLESS SPECIFIED		MARATHON ELECTRIC	DRAWN SMC 11-01-1990					
				DEC.	INCHES		CHK	ML	APPD	JAY	SCALE	3=8
6	ADDED MISSING SHAFT DIM.	CN 29200-3453	ERH 02-16-2004	ML	.X	±.1						
5	NEW REAR BRACKET	CN 19513	AJS 12-16-1994		.XX	±.03	TITLE OUTLINE					
4	.50 NPS WAS .50 NPT	CN 6642	RM 11-31-1991		.XXX	±.005	56 FR. - DP.					
3	REDRAWN ON CADD	CN 3748984	SMC 10-03-1990		.XXXX	±.0005	MAT'L.					
NO.	REVISION	BY & DATE	CHK	ANG	±7'30"		FINISH					
THIS DRAWING IN DESIGN AND DETAIL IS OUR PROPERTY AND MUST NOT BE USED EXCEPT IN CONNECTION WITH OUR WORK ALL RIGHTS OF DESIGN AND INVENTION ARE RESERVED THIS IS AN ELECTRONICALLY GENERATED DOCUMENT - DO NOT SCALE THIS PRINT				RFP	CAD FILE ss75081			SIZE	DRAWING NO.	PAGE	OF	REV.
				DIST	WP			A	SS75081			6

SINGLE VOLTAGE – SPLIT PHASE
 REVERSIBLE ON TERM BOARD
 NO OVERLOAD PROTECTION



VIEWING TERMINAL END

C.C.W. ROTATION SHOWN.

FOR C.W. ROTATION INTERCHANGE
 YELLOW & BLUE LEADS ON TERM 1 & 4.

DASH LINES INDICATE LEADS CONNECTED
 TO MOTOR SIDE OF SWITCH.

				TOLERANCES UNLESS SPECIFIED			DRAWN ML 01-27-1988			
				DEC.	INCHES		CHK	GK 02-05-1988		
4	REDRAWN IN AUTOCAD	RWR 06-15-2004	ML	.X	± -	TITLE CONNECTION DIAGRAM 48 FR. SINGLE VOLTAGE REVERSIBLE MAT'L. FINISH	APPD DRN 03-11-1988			
3	REVISED LINE 2 LOCATION CN6427	RM 01-28-1991	GK	.XX	± -		SCALE 1=1			
2	ADDED CUSTOMER CONNECTION NOTE CN6011	BW 08-03-1989	GK	.XXX	± -		REF			
1	NEW DRAWING	ML 08-19-1988	GK	.XXXX	± -		FMF			
NO.	REVISION	BY & DATE	CHK	ANG	± -		PREV			
THIS DRAWING IN DESIGN AND DETAIL IS OUR PROPERTY AND MUST NOT BE USED EXCEPT IN CONNECTION WITH OUR WORK ALL RIGHTS OF DESIGN AND INVENTION ARE RESERVED THIS IS AN ELECTRONICALLY GENERATED DOCUMENT - DO NOT SCALE THIS PRINT				RFP	CAD FILE ee7195a		SIZE	DRAWING NO.	PAGE 1 OF 1	REV.
				DIST LB			A	EE7195A		4

CERTIFICATION DATA SHEET

Model#: 56S17D2046 N WINDING#: SE484166 NONE 1
 CONN. DIAGRAM: A-EE7195A ASSEMBLY: F1 ONLY
 OUTLINE: A-SS75081-625

TYPICAL MOTOR PERFORMANCE DATA

HP	KW	SYNC. RPM	F.L. RPM	FRAME	ENCLOSURE	KVA CODE	DESIGN
1/2	.37	1800	1725	56	DP	N	NO DESIGN CODE

PH	Hz	VOLTS	FL AMPS	START TYPE	DUTY	INSL	S.F	AMB°C	ELEVATION
1	60	115	9.2	ACROSS THE LINE	CONTINUOUS	B3	1.0	40	3300

FULL LOAD EFF: 60	3/4 LOAD EFF: 56	1/2 LOAD EFF: 47.6	GTD. EFF	ELEC. TYPE	NO LOAD AMPS
FULL LOAD PF: 59.8	3/4 LOAD PF: 51.6	1/2 LOAD PF: 42.1	0	SPLIT PHASE	7.9

F.L. TORQUE	LOCKED ROTOR AMPS	L.R. TORQUE	B.D. TORQUE	F.L. RISE°C
24.3 LB-FT	56.8	39.3 LB-FT -	62.3 LB-FT -	55

SOUND PRESSURE @ 3 FT.	SOUND POWER	ROTOR WK^2	MAX. WK^2	SAFE STALL TIME	STARTS /HOUR	APPROX. MOTOR WGT
0 dBA	10 dBA	- LB-FT^2	0 LB-FT^2	0 SEC.	0	- LBS.

*** SUPPLEMENTAL INFORMATION ***

DE BRACKET TYPE	ODE BRACKET TYPE	MOUNT TYPE	ORIENTATION	SEVERE DUTY	HAZARDOUS LOCATION	DRIP COVER	SCREENS	PAINT
STANDARD	STANDARD	RIGID	HORIZONTAL	FALSE	NONE	FALSE	NONE	GRAY (POWDER)

BEARINGS		GREASE	SHAFT TYPE	SPECIAL DE	SPECIAL ODE	SHAFT MATERIAL	FRAME MATERIAL
DE	OPE	POLYREX EM	STANDARD 56	NONE	NONE	1144 STRESSPROOF (C-223)	ROLLED STEEL
BALL	BALL						
6203	6203						

THERMO-PROTECTORS				THERMISTORS	CONTROL	SPACE /n HEATERS
THERMOSTATS	PROTECTORS	WDG RTDs	BRG RTDs			
NONE	NOT	NONE	NONE	NONE	FALSE	NONE VOLTS

If Inverter equals NONE, contact factory for further information

INVERTER TORQUE: NONE
INV. HP SPEED RANGE: NONE
ENCODER: NONE
NONE NONE
NONE NONE PPR
BRAKE: NONE NONE
NONE P/N NONE
NONE NONE
NONE FT-LB NONE V NONE Hz

*
N
O
T
E
S
*

DATE: 06/28/2017 02:14:20 AM
 FORM 3531 REV.3 02/07/99
 ** Subject to change without notice.