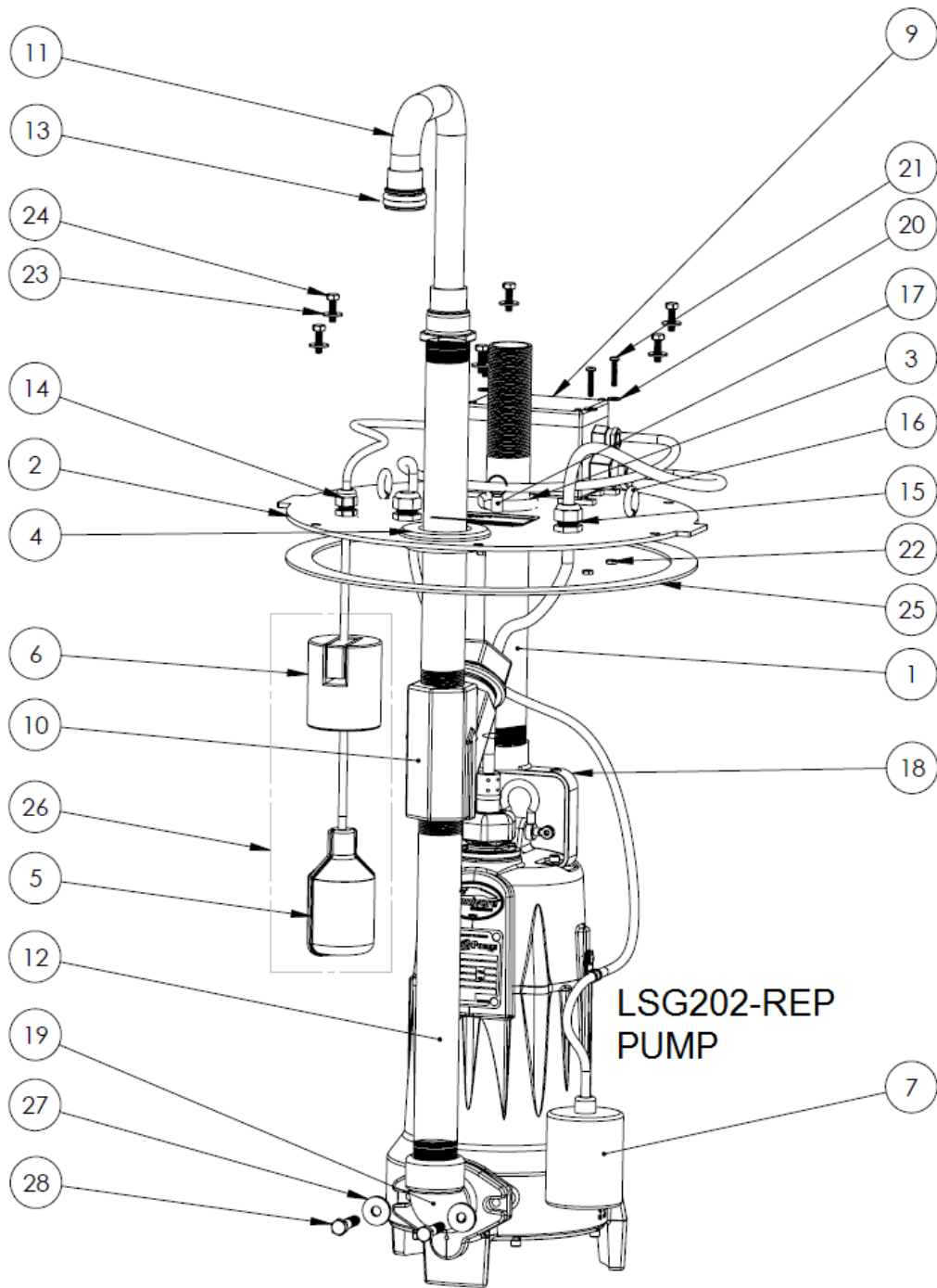


LSG202-RE (B52)



LSG202-RE

LSG202-RE (B52)

| # | PART # | DESCRIPTION | QTY | Note |
|----------|---------------|---|------------|-------------|
| 1 | 5669000 | 1-1/4" PIPE HANGER, STRAIGHT THREADS | 1 | |
| 2 | 5661000 | COVER | 1 | |
| 3 | 5670000 | 1-1/4" GALVANIZED PIPE NUT | 2 | |
| 4 | 4760000 | 1-1/4" PIPE SEAL GROMMET | 1 | [1] |
| 5 | K001134 | FLOAT SWITCH, 20FT CORD, INCLUDES 1 SWITCH PER KIT | 1 | |
| 6 | K001388 | CABLE WEIGHT | 1 | |
| 7 | K001136 | SWITCH KIT | 1 | |
| 9 | 5663000 | JUNCTION BOX | 1 | |
| 10 | ACV125 | 1.25" ANTI-SIPHON VALVE | 1 | |
| 11 | 5656000 | CUSTOM COPPER ELBOW | 1 | |
| 12 | 5671000 | DISCHARGE PIPE, 1-1/4", GALVANIZED | 2 | |
| 13 | 5666000 | O-RING | 2 | [1] |
| 14 | 4785000 | CORD GRIP SIZE 09 | 1 | |
| 15 | RCC8 | SM WATERTIGHT CABLE GRIP | 2 | |
| 16 | 5673000 | EYEBOLT | 2 | |
| 17 | 5662000 | QUICK RELEASE PIN | 1 | |
| 18 | 56740A0 | PUMP HANDLE / HANGER | 1 | |
| 19 | G90 | FLANGED ELBOW KIT, INCLUDES GASKET, SCREWS AND WASHER | 1 | |
| 20 | 8141000 | WASHER, #10 X 1/2 SS | 5 | |
| 21 | 8059000 | SCREW 10 - 24 x 1 PHILLIPS HEAD | 4 | |
| 22 | 8002000 | #10-24 STAINLESS STEEL HEX | 4 | |
| 23 | 8131000 | 1/4x3/4" STAINLESS STEEL FLAT WASHER | 6 | |
| 24 | 8024000 | 1/4-20x7/8" HEX HEAD SS BOLT | 6 | |
| 25 | 4039RB0 | GASKET TAPE 1/4" THICK, 56" | 1 | |
| 26 | K001135 | ALARM SWITCH WITH CABLE WEIGHT | 1 | |
| 27 | 8158000 | WASHER, 3/8 x 1-1/8, SS | 2 | |
| 28 | 8143000 | SCREW, 3/8-16 x 1-3/4 LG, SS | 2 | |

PART NOTES:

[1] - Part requires factory authorized service. Contact Liberty Pumps at 1-800-543-2550