

# PRODUCT INFORMATION PACKET

Model No: 145TBDR5337  
Catalog No: I127  
2,1800,DP,145T,1/60/115/208-230  
Pressure Washers



Regal and Marathon are trademarks of Regal Beloit Corporation or one of its affiliated companies.  
©2018 Regal Beloit Corporation, All Rights Reserved. MC017097E





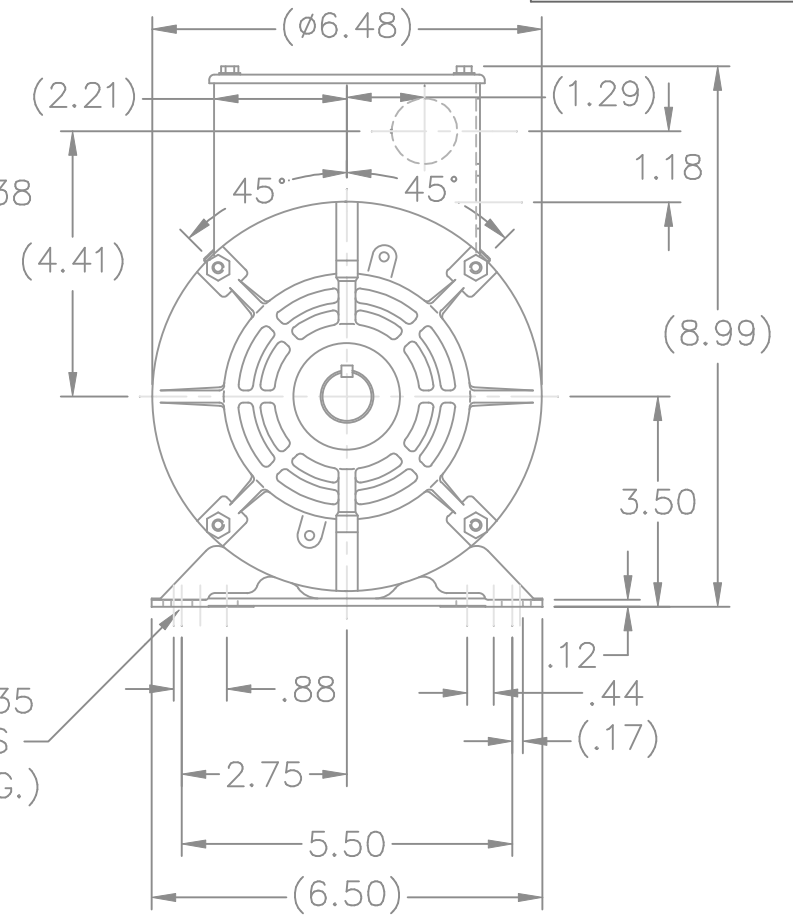
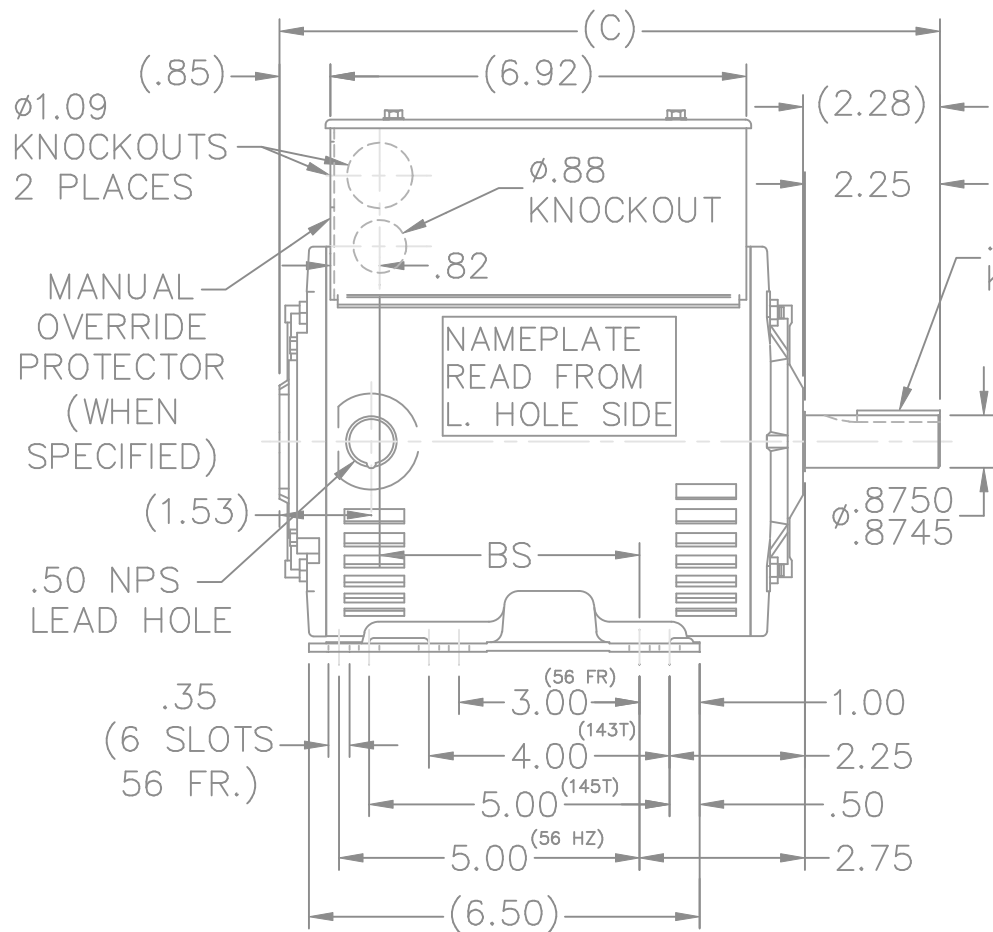
### Nameplate Specifications

Output HP	<b>2 Hp</b>	Output KW	<b>1.5 kW</b>
Frequency	<b>60 Hz</b>	Voltage	<b>115/208-230 V</b>
Current	<b>18.8/10.2-9.4 A</b>	Speed	<b>1740 rpm</b>
Service Factor	<b>1.15</b>	Phase	<b>1</b>
Efficiency	<b>81.5 %</b>	Duty	<b>Continuous</b>
Insulation Class	<b>B</b>	Design Code	<b>L</b>
KVA Code	<b>J</b>	Frame	<b>145T</b>
Enclosure	<b>Drip Proof</b>	Overload Protector	<b>Manual</b>
Ambient Temperature	<b>40 °C</b>	Drive End Bearing Size	<b>6205</b>
Opp Drive End Bearing Size	<b>6203</b>	UL	<b>Recognized ( Not Protector)</b>
CSA	<b>Y</b>	CE	<b>Y</b>
IP Code	<b>22</b>		

### Technical Specifications

Electrical Type	<b>Capacitor Start Capacitor Run</b>	Starting Method	<b>Across The Line</b>
Poles	<b>4</b>	Rotation	<b>Selective Counterclockwise</b>
Mounting	<b>Rigid base</b>	Motor Orientation	<b>Horizontal</b>
Drive End Bearing	<b>Ball</b>	Opp Drive End Bearing	<b>Ball</b>
Frame Material	<b>Rolled Steel</b>	Shaft Type	<b>T</b>
Overall Length	<b>13.49 in</b>	Frame Length	<b>9.56 in</b>
Shaft Diameter	<b>0.875 in</b>	Shaft Extension	<b>2.28 in</b>
Assembly/Box Mounting	<b>F1 Only</b>		
Outline Drawing	<b>A-100147-956</b>	Connection Diagram	<b>102006-2</b>

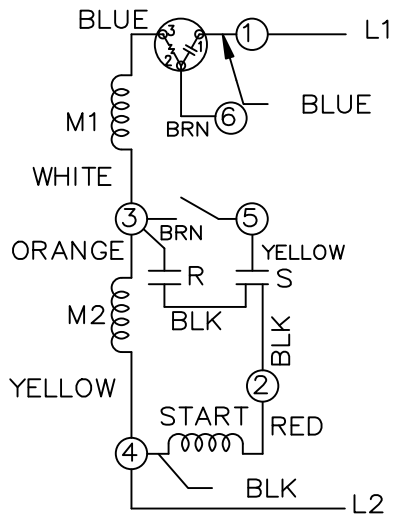
This is an uncontrolled document once printed or downloaded and is subject to change without notice. Date Created: 06/29/2018



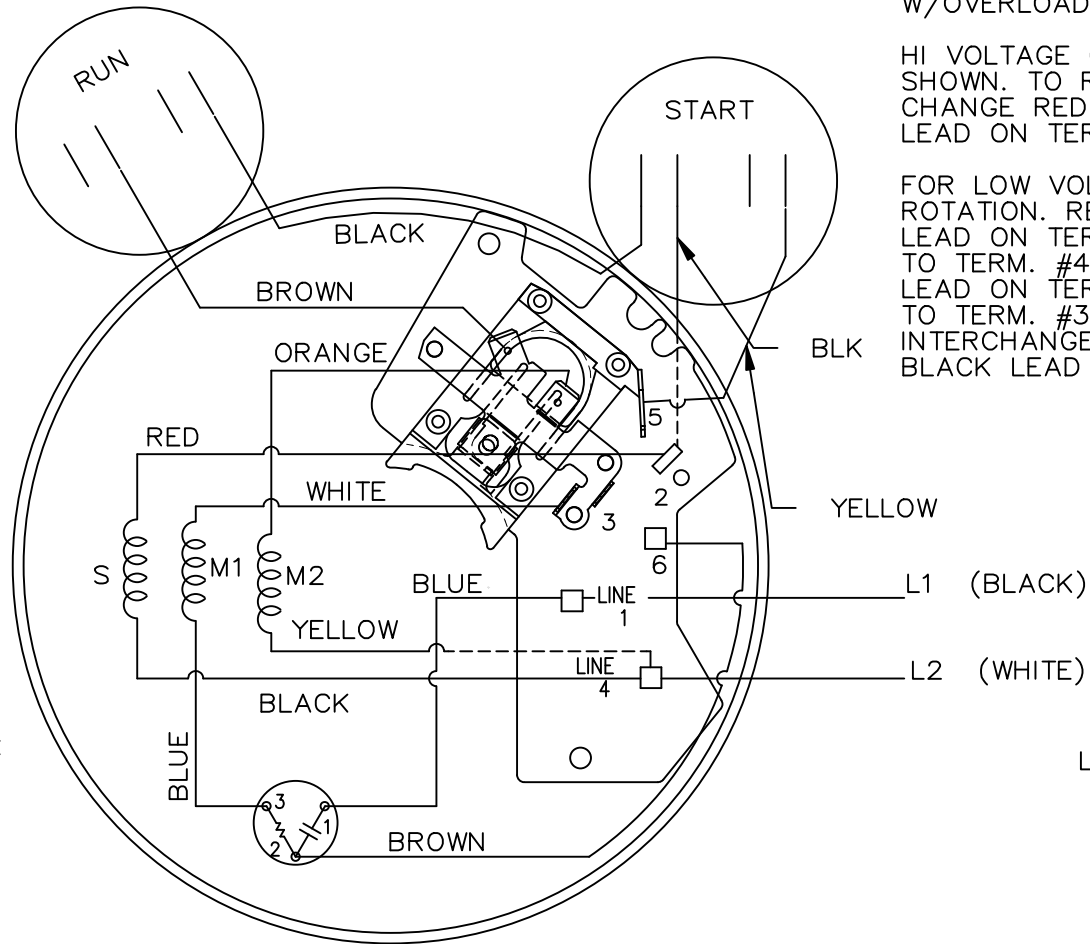
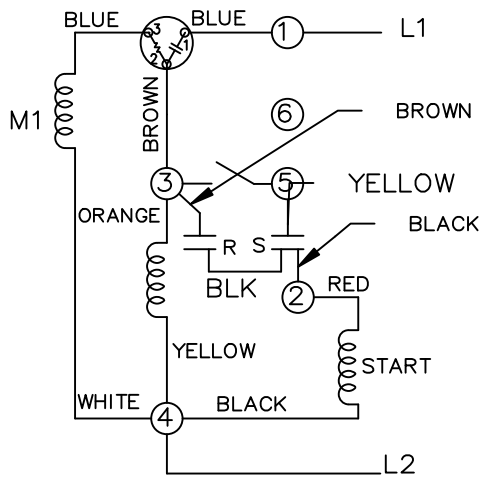
DASH	FR.	C	BS
956	145T	13.49	6.82

				TOLERANCES UNLESS SPECIFIED		MARATHON ELECTRIC	DRAWN MH 03-24-1998						
				DEC.	INCHES		CHK	ML	03-31-1998	APPD	GK	03-31-1998	
				.X	±.1	TITLE OUTLINE 140T & 56HZ FR. - DR.PR. - 1ø			SCALE	5=16			
4	REDRAWN IN AUTOCAD	TAT 05-09-2005	ML	.XXX	±.005		REF						
3	REDRAWN ON CADD - NO CHANGES	MH 03-31-1998		.XXXX	±.0005	MAT'L.			FMF				
NO.	REVISION	BY & DATE	CHK	ANG	±7'30"	FINISH	PREV						
THIS DRAWING IN DESIGN AND DETAIL IS OUR PROPERTY AND MUST NOT BE USED EXCEPT IN CONNECTION WITH OUR WORK ALL RIGHTS OF DESIGN AND INVENTION ARE RESERVED THIS IS AN ELECTRONICALLY GENERATED DOCUMENT - DO NOT SCALE THIS PRINT						RFP	CAD FILE	100147	SIZE	DRAWING NO.	PAGE	OF	REV.
						DIST	WP		A	100147			4

HIGH VOLTAGE C.C.W.



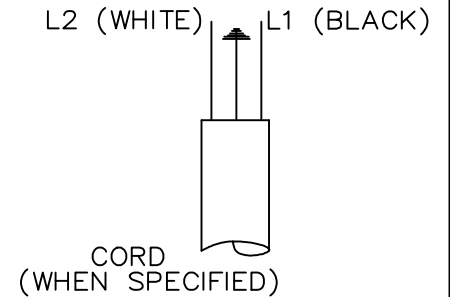
LOW VOLTAGE C.C.W.



DUAL VOLTAGE CAPACITOR  
START, CAPACITOR RUN  
W/OVERLOAD AND SELECT ROTATION

HI VOLTAGE C.C.W. ROTATION  
SHOWN. TO REVERSE INTER-  
CHANGE RED WITH BLACK  
LEAD ON TERMS. 2 & 4.

FOR LOW VOLTAGE C.C.W.  
ROTATION. REMOVE WHITE  
LEAD ON TERM. #3 & ATTACH  
TO TERM. #4. REMOVE BROWN  
LEAD ON TERM. #6 ATTACH  
TO TERM. #3. TO REVERSE  
INTERCHANGE RED WITH  
BLACK LEAD ON TERMS. 2 & 4.



				TOLERANCES UNLESS SPECIFIED			DRAWN PGK 08-26-1996		
				DEC.	INCHES		CHK	ML 09-05-1996	
				.X	±.1		APPD	GK 09-05-1996	
				.XX	±.02	TITLE CONNECTION DIAGRAM	SCALE	5=8	
7	UPDATED PER IS11-3490	PN 8/31/2011	VC	.XXX	±.005		REF		
6	REDRAWN ON CADD	PGK 09-05-1996		.XXXX	±.0005	MAT'L.	FMF		
NO.	REVISION	BY & DATE	CHK	ANG	±7'30"	FINISH	PREV		
THIS DRAWING IN DESIGN AND DETAIL IS OUR PROPERTY AND MUST NOT BE USED EXCEPT IN CONNECTION WITH OUR WORK ALL RIGHTS OF DESIGN AND INVENTION ARE RESERVED THIS IS AN ELECTRONICALLY GENERATED DOCUMENT - DO NOT SCALE THIS PRINT				RFP	CAD FILE 102006_3		SIZE	DRAWING NO. PAGE OF	REV.
				DIST	WP		A	102006-2	7

CERTIFICATION DATA SHEET

Model#: 145TBDR5337 AF WINDING#: ZB411 NONE 3  
 CONN. DIAGRAM: 102006-2 ASSEMBLY: F1 ONLY  
 OUTLINE: A-100147-956

TYPICAL MOTOR PERFORMANCE DATA

HP	KW	SYNC. RPM	F.L. RPM	FRAME	ENCLOSURE	KVA CODE	DESIGN
2	1.49	1800	1740	145T	DP	J	L

PH	Hz	VOLTS	FL AMPS	START TYPE	DUTY	INSL	S.F	AMB°C	ELEVATION
1	60	115/208-230	18.8/10.2-9.4	ACROSS THE LINE	CONTINUOUS	B3	1.15	40	3300

FULL LOAD EFF: 81.5	3/4 LOAD EFF: 79.2	1/2 LOAD EFF: 74.3	GTD. EFF	ELEC. TYPE	NO LOAD AMPS
FULL LOAD PF: 86.1	3/4 LOAD PF: 82	1/2 LOAD PF: 73.7	0	CAP START CAP RUN	7.8 / 3.9

F.L. TORQUE	LOCKED ROTOR AMPS	L.R. TORQUE	B.D. TORQUE	F.L. RISE°C
6.02 LB-FT	127 / 63.5	15.9 LB-FT 264	14.9 LB-FT 248	80

SOUND PRESSURE @ 3 FT.	SOUND POWER	ROTOR WK^2	MAX. WK^2	SAFE STALL TIME	STARTS /HOUR	APPROX. MOTOR WGT
- dBA	- dBA	0 LB-FT^2	- LB-FT^2	10 SEC.	-	0 LBS.

\*\*\* SUPPLEMENTAL INFORMATION \*\*\*

DE BRACKET TYPE	ODE BRACKET TYPE	MOUNT TYPE	ORIENTATION	SEVERE DUTY	HAZARDOUS LOCATION	DRIP COVER	SCREENS	PAINT
STANDARD	STANDARD	RIGID	HORIZONTAL	FALSE	NONE	FALSE	NONE	GRAY (POWDER)

BEARINGS		GREASE	SHAFT TYPE	SPECIAL DE	SPECIAL ODE	SHAFT MATERIAL	FRAME MATERIAL
DE	OPE						
BALL	BALL	POLYREX EM	T	NONE	NONE	1144 STRESSPROOF (C-223)	ROLLED STEEL
6205	6203						

THERMO-PROTECTORS				THERMISTORS	CONTROL	SPACE /n HEATERS
THERMOSTATS	PROTECTORS	WDG RTDs	BRG RTDs			
NONE	MANUAL	NONE	NONE	NONE	FALSE	NONE VOLTS

If Inverter equals NONE, contact factory for further information

\*  
N  
O  
T  
E  
S  
\*

INVERTER TORQUE: NONE
INV. HP SPEED RANGE: NONE
ENCODER: NONE
NONE NONE
NONE NONE PPR
BRAKE: NONE NONE
NONE P/N NONE
NONE NONE
NONE FT-LB NONE V NONE Hz

DATE: 06/21/2017 11:29:47 AM  
 FORM 3531 REV.3 02/07/99  
 \*\* Subject to change without notice.

**MARATHON ELECTRIC CORPORATION**

TYPICAL PERFORMANCE CURVE for AC MOTOR

Customer

Curve at

230

Volts

HP 2.00

PHASE 1

Model No 145TBDR5337

60

HZ

VOLTS 115/208-230

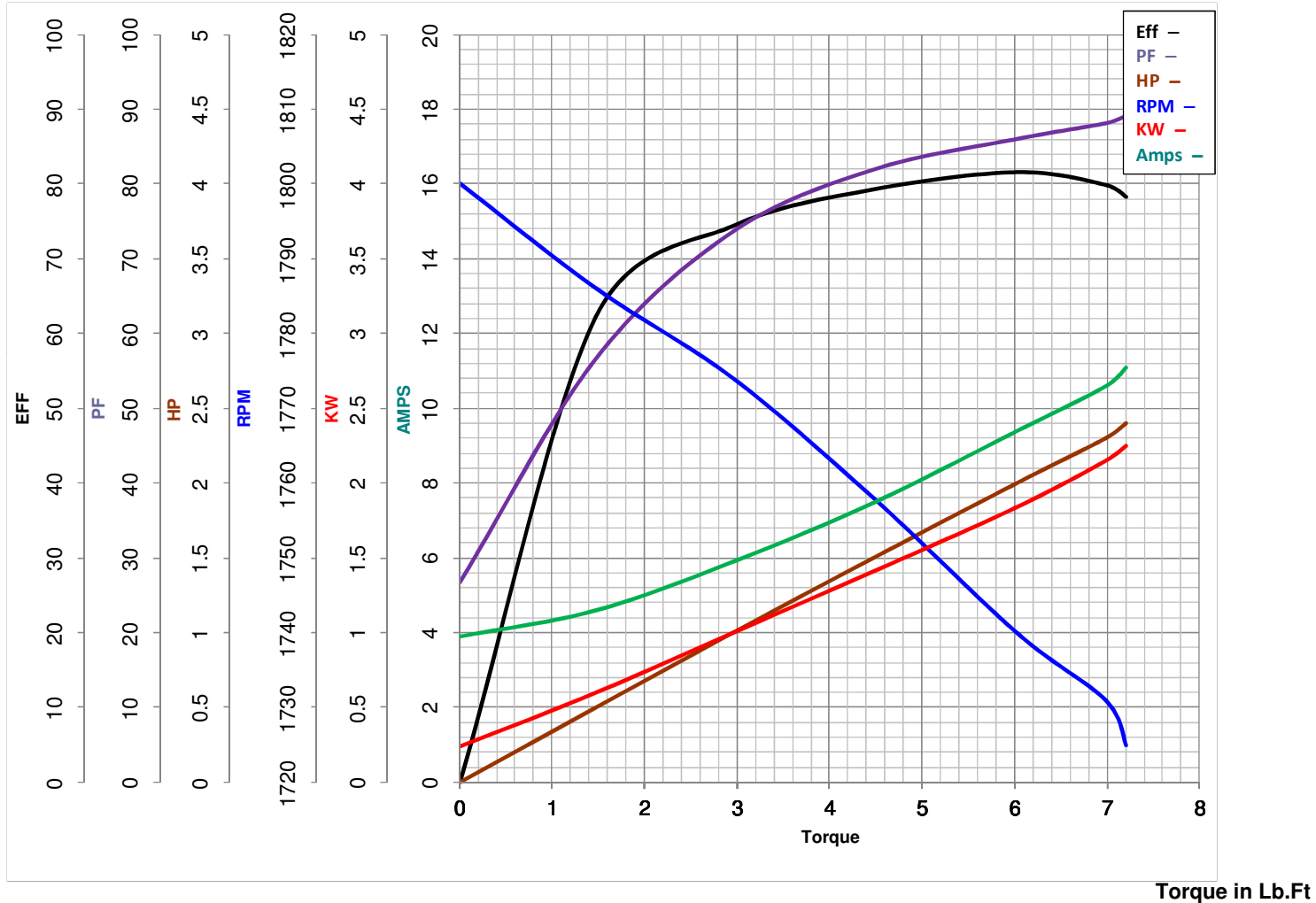
2

HP

Catalog No I127

HZ 60

RPM 1740



Torque in Lb.Ft

FL TORQUE 6.02 Lb.Ft  
 BD TORQUE 14.9 Lb.Ft  
 LR TORQUE 15.9 Lb.Ft

FL AMPS 18.8/10.2-9.4  
 PU TORQUE 14.3 Lb.Ft  
 LR AMPS 63.5

WINDING ZB411-3 Prepared By VINAYAK

Date 8/23/2017