

PRODUCT INFORMATION PACKET

Model No: 182TTTL7034
Catalog No: C405
3,1800,TENV,182TC,3/60/50/230/460
Brake



Regal and Marathon are trademarks of Regal Beloit Corporation or one of its affiliated companies.
©2018 Regal Beloit Corporation, All Rights Reserved. MC017097E

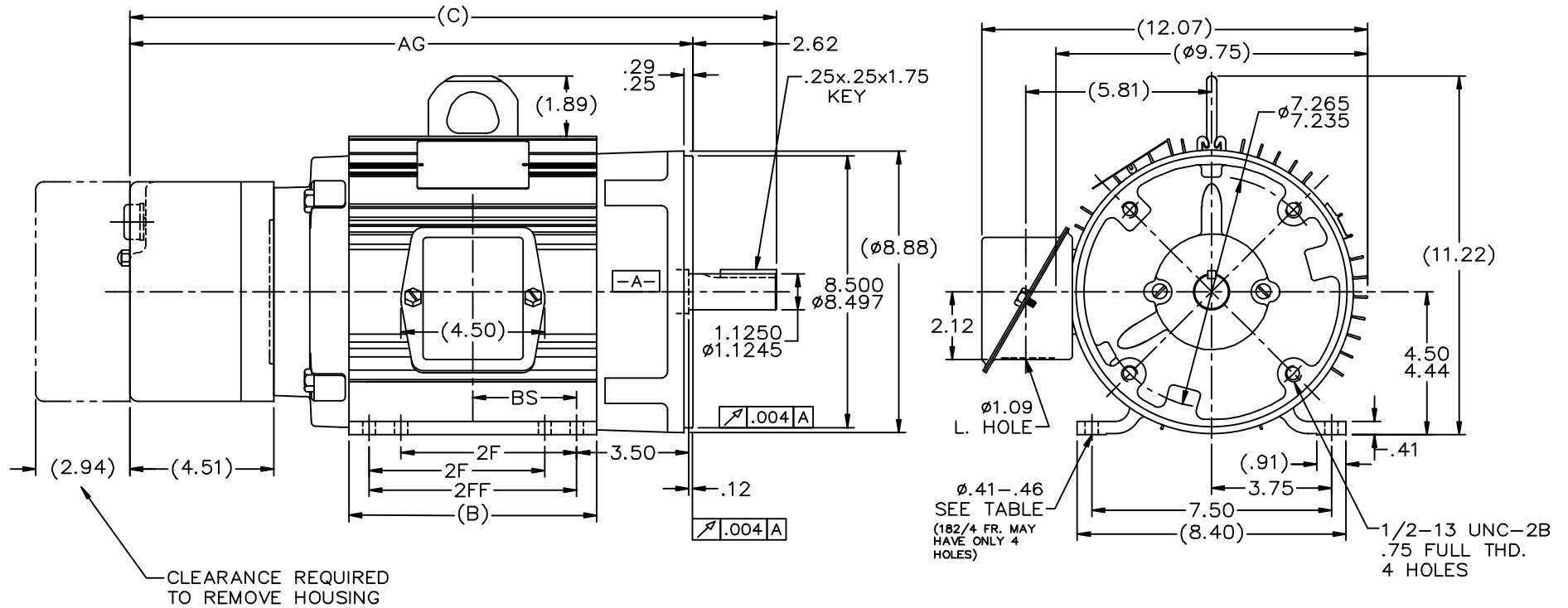


Nameplate Specifications

Output HP	3 Hp	Output KW	2.2 kW
Frequency	60 Hz	Voltage	230/460 V
Current	8.0/4.0 A	Speed	1760 rpm
Service Factor	1.15	Phase	3
Efficiency	90.2 %	Duty	Continuous
Insulation Class	F	Design Code	B
KVA Code	K	Frame	182TC
Enclosure	Totally Enclosed Non Ventilated	Overload Protector	No
Ambient Temperature	40 °C	Drive End Bearing Size	6207
Opp Drive End Bearing Size	6206	UL	Recognized
CSA	Y	CE	Y
IP Code	43		

Technical Specifications

Electrical Type	Squirrel Cage Induction Run	Starting Method	Across The Line
Poles	4	Rotation	Reversible
Mounting	Rigid base	Motor Orientation	Horizontal
Drive End Bearing	Ball	Opp Drive End Bearing	Ball
Frame Material	Aluminum	Shaft Type	T
Overall Length	19.68 in	Frame Length	7.20 in
Shaft Diameter	1.125 in	Shaft Extension	2.62 in
Assembly/Box Mounting	F1/F2 Capable		
Outline Drawing	B-SS68966-720	Connection Diagram	A-EE7308



NOTES:

1. BOX CAN BE MOUNTED ON OPPOSITE SIDE BY REMOVING BRACKETS & TURNING FRAME 180°.
2. BOX CAN BE ROTATED IN 90° STEPS.
3. NAMEPLATE TO BE READ FROM CONDUIT BOX SIDE OF MOTOR.

DASH	FR.	C	B	2FF	2F	BS	AG	FOOT HOLES	MOUNTING
575	182T	18.23	5.75	-	4.50	2.25	15.61	4	F1 OR F2
675	184T	19.23	6.75	5.50	-	2.75	16.61	4	F1 OR F2
720	182T	19.68	7.20	-	4.50	2.95	17.06	8	F1 OR F2
720	184T	19.68	7.20	-	5.50	2.95	17.06	4	F1 OR F2
775	184T	20.23	7.75	-	5.50	3.25	17.61	4	F1 OR F2
820	184T	20.68	8.20	-	5.50	3.45	18.06	8	F1 OR F2

NO.	REVISION	BY & DATE	CHK	ANG	FINISH	TOLERANCES UNLESS SPECIFIED		MARATHON ELECTRIC	DRAWING NO.	PAGE	OF	REV.					
						INCHES	DEC.										
9	DASH -720, 4 FOOT HOLES WERE 8	ECN #25076	WGJ	07-12-2012	EMH												
8	UPDATED DRAWING		RJW	04-23-2007					CHK	ML	06-29-2000						
7	REMOVE 5.50 FROM DASH 675 2F	CN32981	RJW	02-09-2005		.X	±.1		APPD	TB	06-30-2000						
6	REVISED CHART	CN33724	RJW	12-27-2004	ML	.XX	±.03		SCALE		5-16						
5	CHG. -720 2FF TO 5.5 AND -	CN2084B	RWR	03-26-2004	ML	.XXX	±.005		REF								
4	ADDED 2FF TO TABULATED CHART		TAT	01-30-2004	ML	.XXXX	±.0005		FMF								
NO.						REVISION	BY & DATE		CHK	ANG	±7'30"	FINISH	PREV				
THIS DRAWING IN DESIGN AND DETAIL IS OUR PROPERTY AND MUST NOT BE USED EXCEPT IN CONNECTION WITH OUR WORK ALL RIGHTS OF DESIGN AND INVENTION ARE RESERVED THIS IS AN ELECTRONICALLY GENERATED DOCUMENT - DO NOT SCALE THIS PRINT									RFP	CAD FILE ss68966			SIZE	DRAWING NO.	PAGE	OF	REV.
									DIST	LB	B	SS68966	9				

EE7308

THREE PHASE
DUAL VOLTAGE MOTOR



VIEW OF TERMINAL END

REF.
WINDING DIAGRAM

T8Y, T2Y, T2BL, T4BX, T2EC, T2G
T6BZ, T2B, T6BL, T4AV, T6B, T4B

OPTIONAL CORD
CONNECTION

L1 — WHITE
L2 — RED
L3 — BLACK

NO.	REVISION	BY & DATE	CHK	ANG	TOLERANCES UNLESS SPECIFIED		FINISH	DRAWN RM 11/20/1990				
					DEC.	INCHES						
5	CHG TO REGAL LOGO	SL 09/10/2015	AB					CHK ML 11/21/1990				
4	REVISED IEC NOTATIONS	MSG 11/15/2011	CMN	.X	±.1			APPD SAS 04/24/2003				
3	ADDED IEC NOTATIONS... (U1), (V1) ETC. MU95194	MSG 5/10/2010	MJS	.XX	±.02		TITLE CONNECTION DIAGRAM	SCALE 1=1				
2	ADDED THE OPTIONAL CORD CONNECTION MU46318	RDH 04/24/2003	DRS	.XXX	±.005		3Ø - DUAL VOLTAGE MOTOR	REF				
1	REDRAWN	RM 11/20/1990		.XXXX	±.0005		MAT'L.	FMF				
					±7'30"			PREV				
THIS DRAWING IN DESIGN AND DETAIL IS OUR PROPERTY AND MUST NOT BE USED EXCEPT IN CONNECTION WITH OUR WORK ALL RIGHTS OF DESIGN AND INVENTION ARE RESERVED THIS IS AN ELECTRONICALLY GENERATED DOCUMENT - DO NOT SCALE THIS PRINT							RFP	CAD FILE ee7308	SIZE A	DRAWING NO. EE7308	PAGE OF 5	REV. 5
							DIST WP					



CERTIFICATION DATA SHEET

Model#: 182TTTTL7034 ES WINDING#: K1824116 TL 1
 CONN. DIAGRAM: A-EE7308 ASSEMBLY: F1/F2 CAPABLE
 OUTLINE: B-SS68966-720

TYPICAL MOTOR PERFORMANCE DATA

HP	KW	SYNC. RPM	F.L. RPM	FRAME	ENCLOSURE	KVA CODE	DESIGN
3&2	2.24&1.49	1800	1760&1470	182TC	TENV	K	B

PH	Hz	VOLTS	FL AMPS	START TYPE	DUTY	INSL	S.F	AMB°C	ELEVATION
3	60/50	230/460#190/ 380	8/4&6.8/3.4	ACROSS THE LINE	CONTINUOU S	F3	1.15/1.15	40	3300

FULL LOAD EFF:	3/4 LOAD EFF:	1/2 LOAD EFF:	GTD. EFF	ELEC. TYPE	NO LOAD AMPS
90.2&88.5	89.5	88.5			
FULL LOAD PF: 80&76	3/4 LOAD PF: 72.5	1/2 LOAD PF: 60	88.5	SQ CAGE IND RUN	4 / 2

F.L. TORQUE	LOCKED ROTOR AMPS	L.R. TORQUE	B.D. TORQUE	F.L. RISE°C
9 LB-FT	64 / 32	22.5 LB-FT 250	35 LB-FT 389	60

SOUND PRESSURE @ 3 FT.	SOUND POWER	ROTOR WK^2	MAX. WK^2	SAFE STALL TIME	STARTS /HOUR	APPROX. MOTOR WGT
62 dBA	72 dBA	0.4 LB-FT^2	40 LB-FT^2	25 SEC.	2	100 LBS.

*** SUPPLEMENTAL INFORMATION ***

DE BRACKET TYPE	ODE BRACKET TYPE	MOUNT TYPE	ORIENTATION	SEVERE DUTY	HAZARDOUS LOCATION	DRIP COVER	SCREENS	PAINT
C-FACE	BRAKE	RIGID	HORIZONTAL	FALSE	NONE	FALSE	NONE	GRAY (ENAMEL)

BEARINGS		GREASE	SHAFT TYPE	SPECIAL DE	SPECIAL ODE	SHAFT MATERIAL	FRAME MATERIAL
DE	OPE	POLYREX EM	T	NONE	NONE	1144 STRESSPROOF (C-223)	ALUMINUM
BALL	BALL						
6207	6206						

THERMO-PROTECTORS				THERMISTORS	CONTROL	SPACE /n HEATERS
THERMOSTATS	PROTECTORS	WDG RTDs	BRG RTDs			
NONE	NOT	NONE	NONE	NONE	FALSE	NONE VOLTS

If Inverter equals NONE, contact factory for further information

INVERTER TORQUE: NONE
INV. HP SPEED RANGE: NONE
ENCODER: NONE NONE NONE NONE NONE PPR
BRAKE: REGAL SUPPLIED AND MOUNT NONE
STEARNS P/N 91697-15A2KB 56,000 NEMA 2 15 FT-LB 208-230/460-190/380 V 60/50 Hz

*
N
O
T
E
S
*

** Subject to change without notice.

Data Sheet

1821TTL7034



Submittal
Data @ 460 V

Date: 6/19/2017

Customer:

Attention:

Submitted by:

FAREEDA DUDEKULA

Motor Load Data

Load	0%	25%	50%	75%	100%	115%	125%	LR
Current (Amps)	2.00	2.20	2.60	3.2	4.0	4.5	4.8	32.0
Torque (ft-lb)	0.00	2.20	4.4	6.7	9.0	10.4	11.2	22.5
RPM	1800	1790	1780	1770	1760	1755	1750	0
Efficiency (%)		82.5	88.5	89.5	90.2	89.5	88.5	
P.F. (%)	6.5	38.0	60.0	72.5	80.0	81.5	82.5	47.0

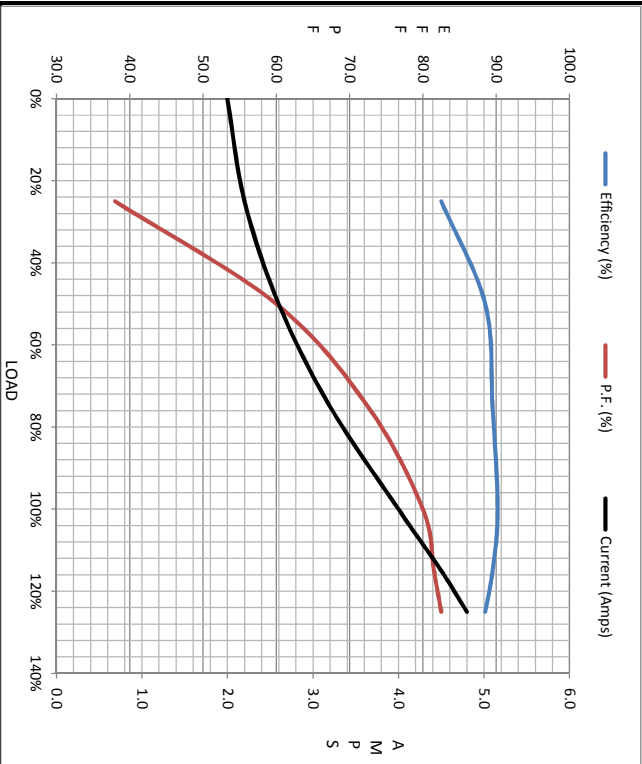
Motor Speed Data

	LR	Pull-Up	BD	Rated	Idle
Speed (RPM)	0	750	1500	1760	1800
Current (Amps)	32.0	30.0	23.0	4.0	2.00
Torque (ft-lb)	22.5	20.0	35.0	9.0	0.00

Information Block

HP	3.0
Sync. RPM	1800
Frame	182
Enclosure	TENV
Construction	TTL
Voltage	30/460#190/38 V
Frequency	60 Hz
Design	B
LR Code letter	K
Service Factor	1.15
Temp Rise @ FL	60 °C
Duty	CONT
Ambient	40 °C
Elevation	1,000 feet
Rotor/Shaft wk ^e	0.40 Lb-Fe
Ref Wdg	K1824116 TL
Sound Pressure @ 1M	62 dbA
VFD Rating	NONE
Outline Dwg	B-SS68966-720
Conn. Diag	A-EE7308
Additional Specifications:	
0	
0	

EQUIV CKT (OHMS / PHASE)				
R1	R2	X1	X2	Xm
2.35330	1.6160	5.0840	7.9000	130.4100



Speed - Torque Curve

