

PRODUCT INFORMATION PACKET

Model No: 213TTDWD16024
Catalog No: C106B
10,3600,DP,213TC,3/60/230/460
Open Drip Proof (ODP)



Regal and Marathon are trademarks of Regal Beloit Corporation or one of its affiliated companies.

©2018 Regal Beloit Corporation, All Rights Reserved. MC017097E





Nameplate Specifications

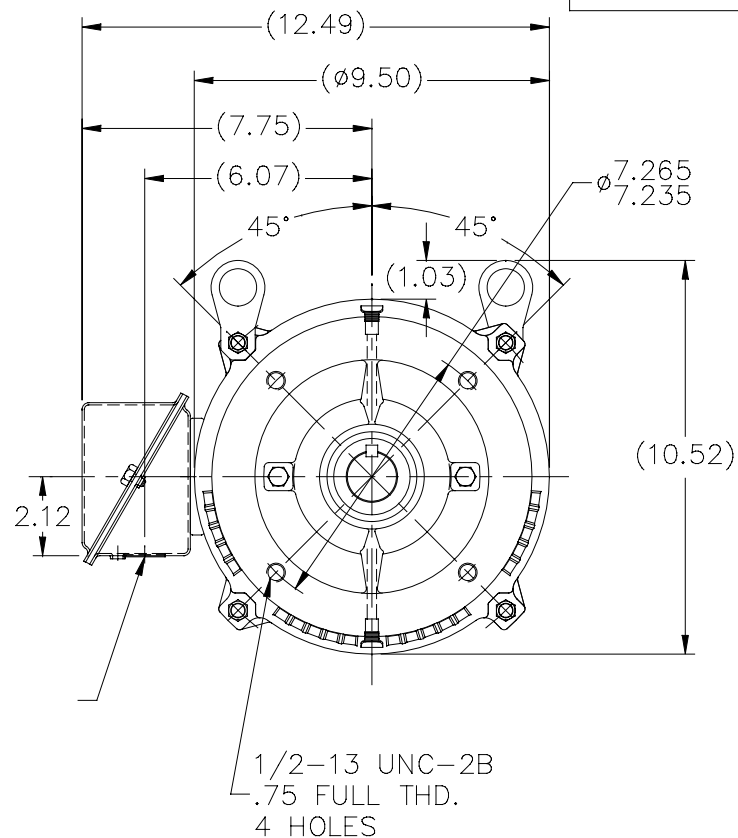
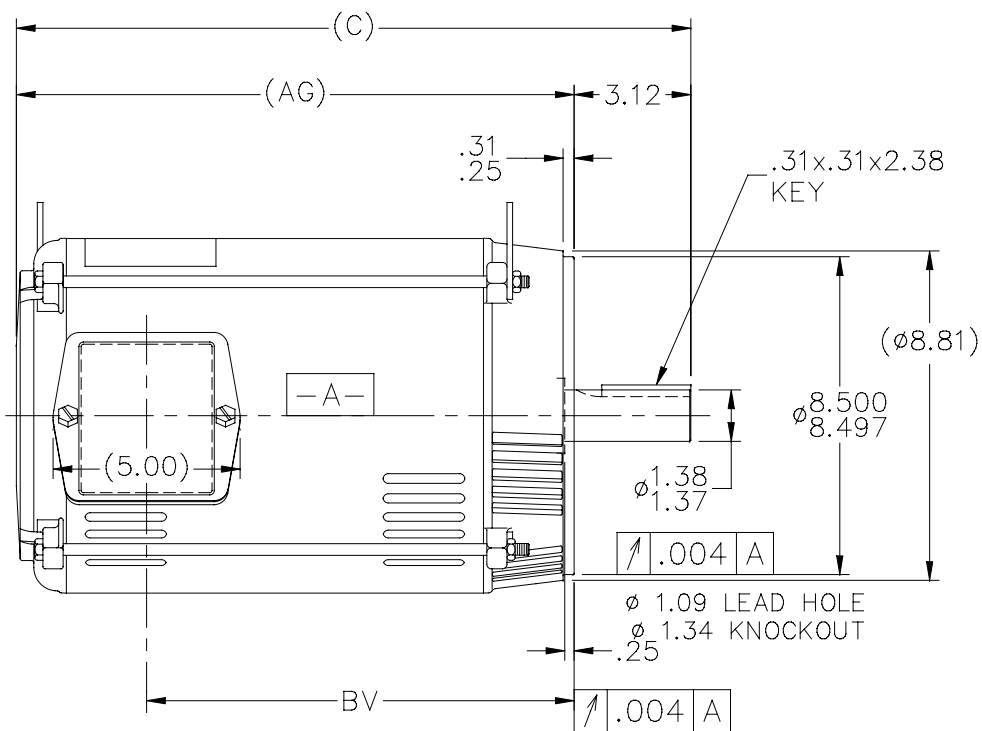
Output HP	10 Hp	Output KW	7.5 kW
Frequency	60 Hz	Voltage	230/460 V
Current	24.2/12.1 A	Speed	3530 rpm
Service Factor	1.15	Phase	3
Efficiency	90.2 %	Duty	Continuous
Insulation Class	B	Design Code	B
KVA Code	G	Frame	213TC
Enclosure	Drip Proof	Overload Protector	No
Ambient Temperature	40 °C	Drive End Bearing Size	6309
Opp Drive End Bearing Size	6206	UL	Recognized
CSA	Y	CE	Y
IP Code	12		

Technical Specifications

Electrical Type	Squirrel Cage Induction Run	Starting Method	Across The Line
Poles	2	Rotation	Reversible
Mounting	Round	Motor Orientation	Horizontal
Drive End Bearing	Ball	Opp Drive End Bearing	Ball
Frame Material	Rolled Steel	Shaft Type	T
Overall Length	18.03 in	Frame Length	11.15 in
Shaft Diameter	1.375 in	Shaft Extension	3.12 in
Assembly/Box Mounting	F1/F2 Capable		
Outline Drawing	SS86595-1115	Connection Diagram	005010.01

This is an uncontrolled document once printed or downloaded and is subject to change without notice. Date Created: 06/29/2018

SS86595



DASH	FR.	C	AG	BV	MOUNTING
965	213T	16.53	13.41	9.93	
1115	213/15T	18.03	14.91	11.43	
1240	213/15T	19.28	16.16	12.68	

- NOTES:
 1. NAMEPLATE TO BE READ FROM C'BOX SIDE OF MOTOR.
 2. BOX CAN BE MOUNTED IN 90° STEPS.

NO.	REVISION	BY & DATE	CHK	ANG	±7'30"	FINISH	PREV			
5	REDRAWN WITH REGAL LOGO	SR 17-07-2015					DRAWN DA 03-26-1996			
4	REDRAWN IN AUTOCAD	TAT 06-29-2004	ML	DEC.	INCHES		CHK ML 04-01-1996			
3	UPDATED C' BOX GEOMETRY CN 28425	DRS 01-31-2000	SR	.X	±.1		APPD DN 04-01-1996			
2	REMOVED NOTE: "C' BOX CAN BE MOUNTED ON OPPOSITE SIDE OF MOTOR" CN 23925-495	MJD 09-02-1999		.XX	±.03	TITLE OUTLINE 210T FR. - BB - TS - DR.PR. - C' FACE	SCALE 1=5			
1	NEW DRAWING - DES/DEV	DA 04-02-1996		.XXX	±.005	MAT'L.	REF			
				.XXXX	±.0005		FMF			
							PREV			
	THIS DRAWING IN DESIGN AND DETAIL IS OUR PROPERTY AND MUST NOT BE USED EXCEPT IN CONNECTION WITH OUR WORK ALL RIGHTS OF DESIGN AND INVENTION ARE RESERVED THIS IS AN ELECTRONICALLY GENERATED DOCUMENT - DO NOT SCALE THIS PRINT				RFP	CAD FILE ss86595	SIZE A	DRAWING NO. SS86595	PAGE OF	REV. 5
				DIST LB						



005010-01

VIEW FROM OUTSIDE OF MOTOR AT SWITCH END.



VOLTAGE	L1	L2	L3	JOIN & INSULATE
HIGH	T1	T2	T3	(T4,T7) (T5,T8) (T6,T9)
LOW	T1,T7	T2,T8	T3,T9	T4,T5,T6

				TOLERANCES UNLESS SPECIFIED		REGAL ™ Regal Beloit America, Inc.		DRAWN RDW 04/12/02		
				DEC.	INCHES			CHK		
				.X	±.1	TITLE EXTERNAL WIRING DIAGRAM 3 PHASE W/O PROTECTOR		APPD		
				.XX	±.01			SCALE 1=1		
				.XXX	±.005			REF FIG.2-51		
A	UPDATED TO REGAL LOGO	SAJ 06/26/15	AJY .XXXX ±.0005	MAT'L	DECAL - 004014		FMF			
NO.	REVISION	BY & DATE	CHK ANG ±1/2"	FINISH	PREV					
THIS DRAWING IN DESIGN AND DETAIL IS OUR PROPERTY AND MUST NOT BE USED EXCEPT IN CONNECTION WITH OUR WORK ALL RIGHTS OF DESIGN AND INVENTION ARE RESERVED THIS IS AN ELECTRONICALLY GENERATED DOCUMENT - DO NOT SCALE THIS PRINT				RFP	04/12/02	CAD FILE	00501001	SIZE	DRAWING NO.	REV.
				DIST	BRF-NLV	A	005010-01	A		

CERTIFICATION DATA SHEET

Model#: 213TTDWD16024 AA **WINDING#:** K2132123 NONE 3
CONN. DIAGRAM: 005010.01 **ASSEMBLY:** F1/F2 CAPABLE
OUTLINE: SS86595-1115

TYPICAL MOTOR PERFORMANCE DATA

HP	KW	SYNC. RPM	F.L. RPM	FRAME	ENCLOSURE	KVA CODE	DESIGN
10&7 1/2	7.50&5.60	3600	3530&2930	213TC	DP	G	B

PH	Hz	VOLTS	FL AMPS	START TYPE	DUTY	INSL	S.F	AMB°C	ELEVATION
3	60/50	230/460#190/ 380	24.2/12.1&22. 6/11.3	ACROSS THE LINE	CONTINUOU S	B4	1.15/1.15	40	3300

FULL LOAD EFF:	3/4 LOAD EFF: 91	1/2 LOAD EFF: 91	GTD. EFF	ELEC. TYPE	NO LOAD AMPS
90.2&88.5					
FULL LOAD PF:	3/4 LOAD PF: 80.3	1/2 LOAD PF: 68.9	88.5	SQ CAGE IND RUN	10.2 / 5.1
85.4&84					

F.L. TORQUE	LOCKED ROTOR AMPS	L.R. TORQUE	B.D. TORQUE	F.L. RISE°C
14.9 LB-FT	158 / 79	25 LB-FT 168	43.2 LB-FT 290	47

SOUND PRESSURE @ 3 FT.	SOUND POWER	ROTOR WK^2	MAX. WK^2	SAFE STALL TIME	STARTS /HOUR	APPROX. MOTOR WGT
75 dBA	85 dBA	0.45 LB-FT^2	5 LB-FT^2	15 SEC.	2	105 LBS.

***** SUPPLEMENTAL INFORMATION *****

DE BRACKET TYPE	ODE BRACKET TYPE	MOUNT TYPE	ORIENTATION	SEVERE DUTY	HAZARDOUS LOCATION	DRIP COVER	SCREENS	PAINT
C-FACE	STANDARD	ROUND	HORIZONTAL	FALSE	NONE	FALSE	NONE	GRAY (ENAMEL)

BEARINGS		GREASE	SHAFT TYPE	SPECIAL DE	SPECIAL ODE	SHAFT MATERIAL	FRAME MATERIAL
DE	OPE						
BALL	BALL	POLYREX EM	T	NONE	NONE	AISI 1045 (C-240)	ROLLED STEEL
6309	6206						

THERMO-PROTECTORS				THERMISTORS	CONTROL	SPACE /n HEATERS
THERMOSTATS	PROTECTORS	WDG RTDs	BRG RTDs			
NONE	NOT	NONE	NONE	NONE	FALSE	NONE VOLTS

If Inverter equals NONE, contact factory for further information

INVERTER TORQUE: NONE
INV. HP SPEED RANGE: NONE
ENCODER: NONE
NONE NONE
NONE NONE PPR
BRAKE: NONE NONE
NONE P/N NONE
NONE NONE
NONE FT-LB NONE V NONE Hz

*
N
O
T
E
S
*

DATE: 06/22/2017 05:03:50 AM
 FORM 3531 REV.3 02/07/99

** Subject to change without notice.



Submission
Data @ **460 V**

Date: 6/20/2017
Customer:
Attention:
Submitted by: **FAREEDA DUDEKULA**

Motor Load Data

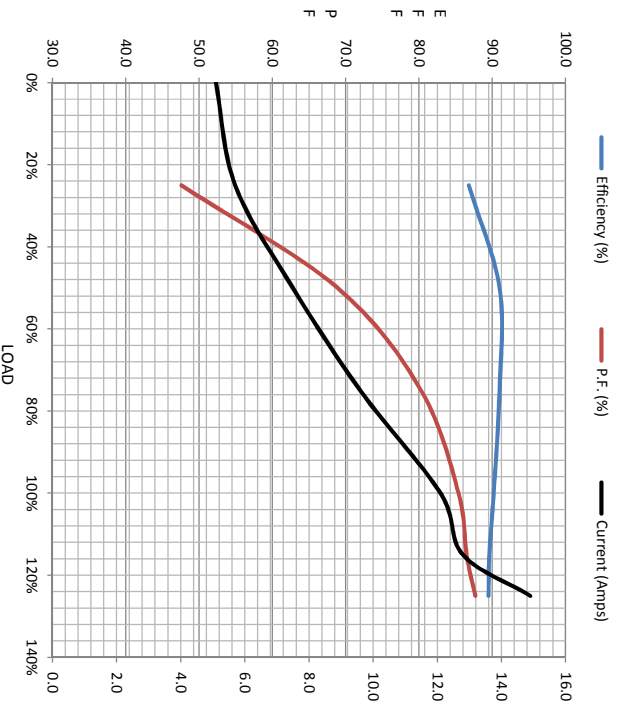
Load	0%	25%	50%	75%	100%	115%	125%	LR
Current (Amps)	5.1	5.7	7.5	9.6	12.1	12.8	14.9	79.0
Torque (ft-lb)	0.00	3.7	7.4	11.1	14.9	17.2	18.7	25.0
RPM	3600	3568	3568	3552	3530	3517	3511	0
Efficiency (%)		86.8	91.0	91.0	90.2	89.6	89.5	
P.F. (%)		6.4	47.6	68.9	80.3	85.4	87.7	43.0

Motor Speed Data

	LR	Pull-Up	BD	Rated	Idle
Speed (rpm)	0	600	2985	3530	3600
Current (Amps)	79.0	73.0	53.5	12.1	5.1
Torque (ft-lb)	25.0	23.0	43.2	14.9	0.00

Information Block

HP	10.0			
Sync. RPM	3600			
Frame	213			
Enclosure	DP			
Construction	TDW			
Voltage	30/460#190/38 V			
Frequency	60 Hz			
Design	B			
LR Code letter	G			
Service Factor	1.15			
Temp Rise @ FL	47 ° C			
Duty	CONT			
Ambient	40 ° C			
Elevation	1,000 feet			
Rotor/Shaft wkt	0.45 Lb-Fe			
Rel Wdg	K2132123 NONE			
Sound Pressure @ 1M	75 dBA			
VFD Rating	NONE			
Outline Dwg	SS86595-1115			
Conn. Diag	005010.01			
Additional Specifications:				
EQUIV CKT (OHMS/ PHASE)				
R1	R2	X1	X2	Xm
0.8910	0.4250	2.1840	1.2590	48.3200



Speed -Torque Curve

