

PRODUCT INFORMATION PACKET

Model No: 215TTDC6003
Catalog No: U286
15,3600,DP,215T,3/60/575
Open Drip Proof (ODP)



Regal and Marathon are trademarks of Regal Beloit Corporation or one of its affiliated companies.
©2018 Regal Beloit Corporation, All Rights Reserved. MC017097E





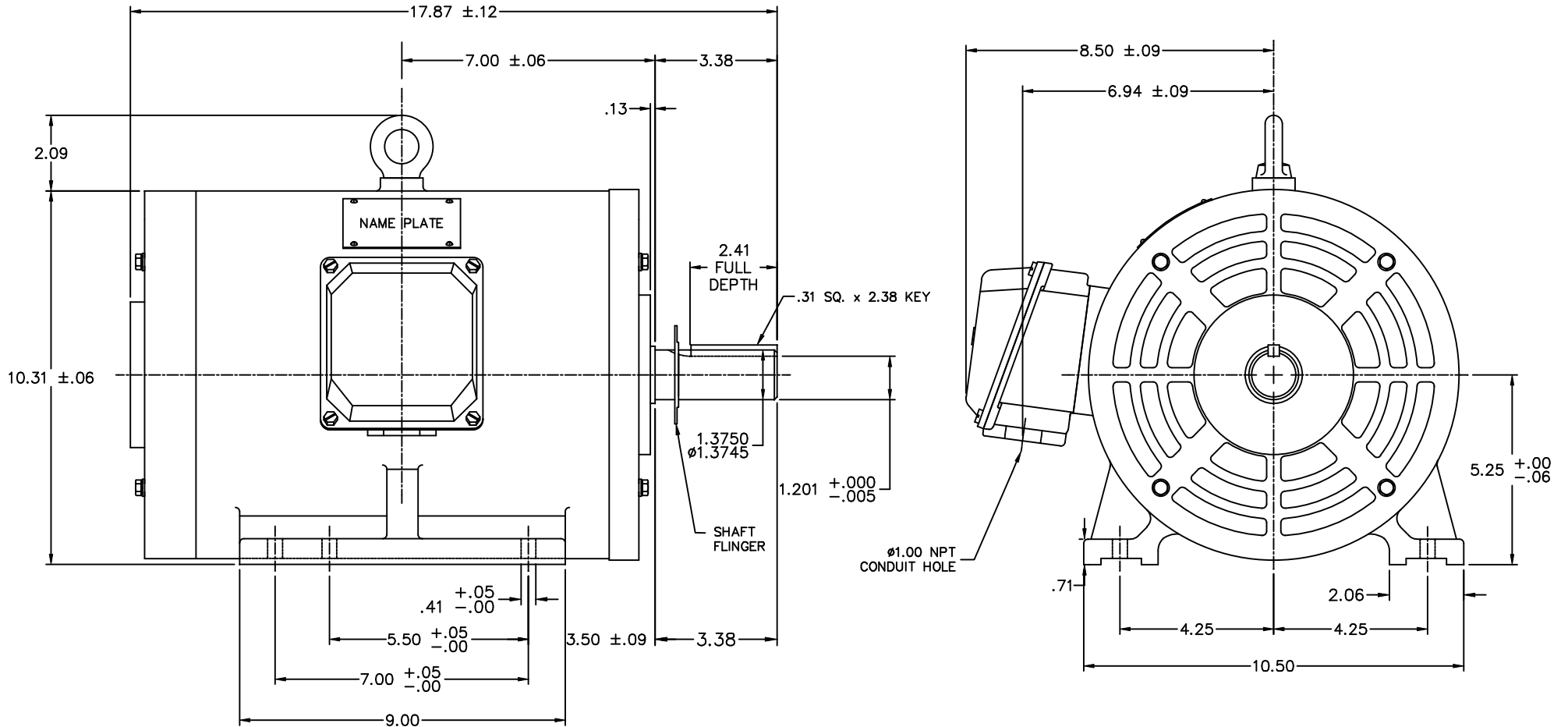
Nameplate Specifications

Output HP	15 Hp	Output KW	11.2 kW
Frequency	60 Hz	Voltage	575 V
Current	13.9 A	Speed	3510 rpm
Service Factor	1.15	Phase	3
Efficiency	91 %	Duty	Continuous
Insulation Class	F	Design Code	B
KVA Code	H	Frame	215T
Enclosure	Drip Proof	Overload Protector	No
Ambient Temperature	40 °C	Drive End Bearing Size	6308
Opp Drive End Bearing Size	6208	UL	Recognized
CSA	Y	CE	Y
IP Code	22		

Technical Specifications

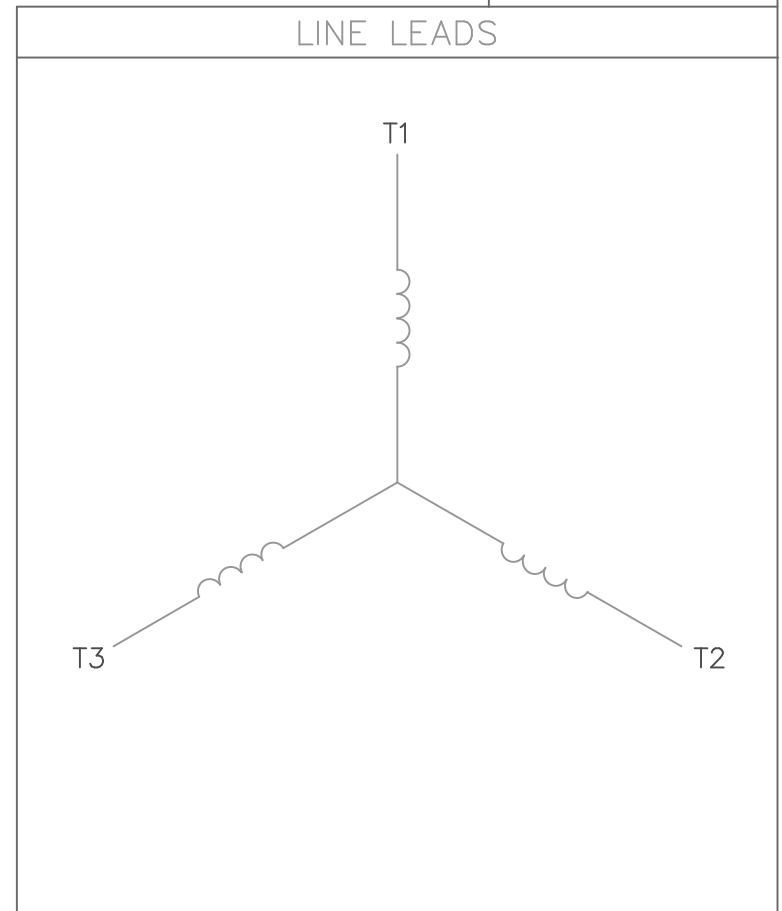
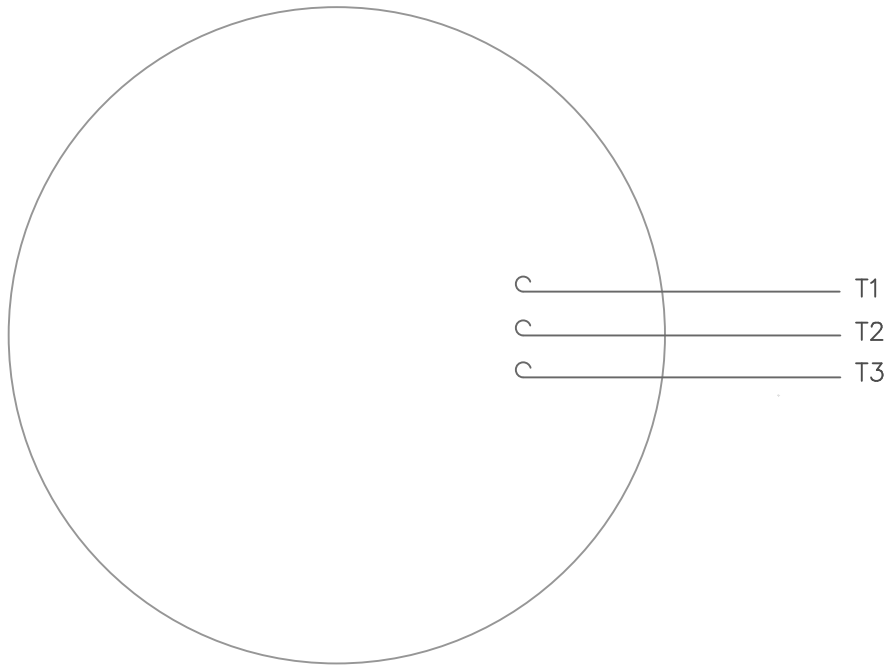
Electrical Type	Squirrel Cage Inverter Rated	Starting Method	Line Or Inverter
Poles	2	Rotation	Reversible
Mounting	Rigid base	Motor Orientation	Horizontal
Drive End Bearing	Ball	Opp Drive End Bearing	Ball
Frame Material	Cast Iron	Shaft Type	T
Overall Length	17.87 in	Shaft Diameter	1.375 in
Shaft Extension	3.38 in	Assembly/Box Mounting	F1/F2 Capable
Outline Drawing	169550.60ME	Connection Diagram	00510201ME

This is an uncontrolled document once printed or downloaded and is subject to change without notice. Date Created: 07/02/2018



		TOLERANCES UNLESS SPECIFIED		MARATHON ELECTRIC		DRAWN CTO 04-23-2002			
		DEC.	INCHES			CHK	ML 05-20-2002		
		.X	$\pm .1$			APPD	SB 05-21-2002		
		.XX	$\pm .03$	TITLE		SCALE 1=1			
		.XXX	$\pm .005$	ODP, RIGID MOUNT, NEW CON-BOX		REF 169515			
1 NEW DRAWING		CTO	04/23/02	MATERIAL		FMF			
NO.	REVISION	BY & DATE	CHK	ANG	FINISH	PREV			
THIS DRAWING IN DESIGN AND DETAIL IS OUR PROPERTY AND MUST NOT BE USED EXCEPT IN CONNECTION WITH OUR WORK ALL RIGHTS OF DESIGN AND INVENTION ARE RESERVED THIS IS AN ELECTRONICALLY GENERATED DOCUMENT - DO NOT SCALE THIS PRINT				RFP	CAD FILE	16955060me	SIZE	DRAWING NO.	REV.
				DIST	B	169550-60ME	1		

VIEW FROM OUTSIDE OF MOTOR AT SWITCH END.



CONNECT LEADS AS FOLLOWS
FOR FOUR CONDUCTOR CORD ()

CORD	L1 (RED)	L2 (WHITE)	L3 (BLACK)	(GREEN)
MOTOR	T1	T2	T3	GROUND

				TOLERANCES UNLESS SPECIFIED				DRAWN RDW 5/1/02		
				DEC.	INCHES			CHK		
				.X	±.1			APPD		
				.XX	±.01			SCALE 1=1		
				.XXX	±.005			REF		
				.XXXX	±.0005	MAT'L. DECAL - 004169		FMF		
NO.	REVISION	BY & DATE	CHK	ANG	±1/2'	FINISH		PREV		
THIS DRAWING IN DESIGN AND DETAIL IS OUR PROPERTY AND MUST NOT BE USED EXCEPT IN CONNECTION WITH OUR WORK ALL RIGHTS OF DESIGN AND INVENTION ARE RESERVED THIS IS AN ELECTRONICALLY GENERATED DOCUMENT - DO NOT SCALE THIS PRINT				RFP	5/1/02	CAD FILE 00510201ME		SIZE	DRAWING NO.	REV.
				DIST				A	005102-01ME	

Date: 6/29/2017

215TTDC6003

Customer:



215TTDC6003

Attention:

FAREEDA DUDEKULA

Submittal

Data @ 575 V

Submitted by:

Motor Load Data

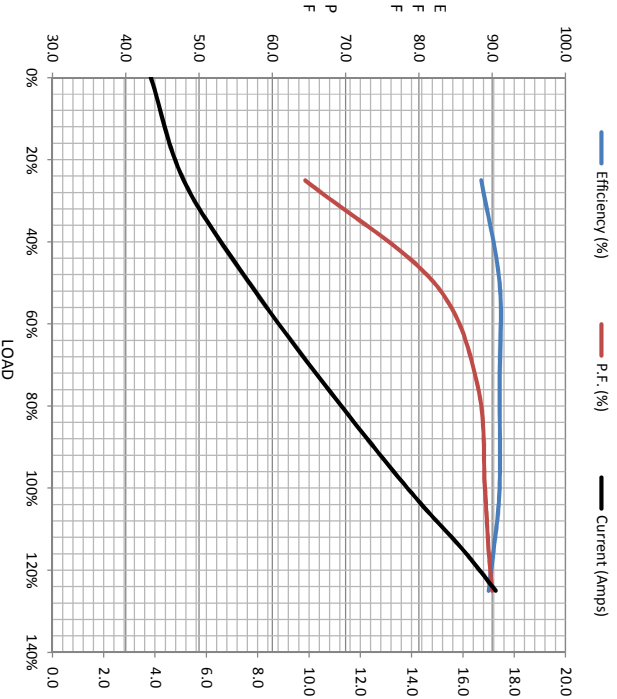
Load	0%	25%	50%	75%	100%	115%	125%	LR
Current (Amps)	3.8	5.1	7.7	10.6	13.8	16.0	17.3	92.8
Torque (ft-lb)	0.00	5.7	11.3	17.0	22.6	26.0	28.2	46.1
RPM	3600	3580	3560	3535	3510	3495	3485	0
Efficiency (%)		88.5	91.0	91.0	91.0	90.2	89.5	
P.F. (%)	9.4	64.5	82.1	88.0	89.0	89.5	90.0	0.0

Motor Speed Data

	LR	Pull-Up	BD	Rated	Idle
Speed (rpm)	0	1800	2980	3510	3600
Current (Amps)	92.8	85.4	60.4	13.8	3.8
Torque (ft-lb)	46.1	39.6	70.9	22.6	0.00

Information Block

HP	15.0
Sync. RPM	3600
Frame	215
Enclosure	DP
Construction	TDC
Voltage	575 V
Frequency	60 HZ
Design	A
LR Code letter	H
Service Factor	1.15
Temp Rise @ FL	60 °C
Duty	CONT
Ambient	40 °C
Elevation	1,000 feet
Rotor/Shaft wkt	0.00 Lb-Fe
Ref Wdg	TT10702011 NONE
Sound Pressure @ 1M	79 dBA
VFD Rating	CONSTANT 10:1
Outline Dwg	169550.60ME
Conn. Diag	5102.01
Additional Specifications:	
0	
0	
EQUIV CKT (OHMS / PHASE)	
R1	R2
0.00000	0.00000
X1	X2
0.00000	0.00000
Xm	
0.00000	



Speed - Torque Curve

