

Series: EH-L

Submersible Effluent Pumps

.5 & 1.0 & 1.5HP, 3450RPM

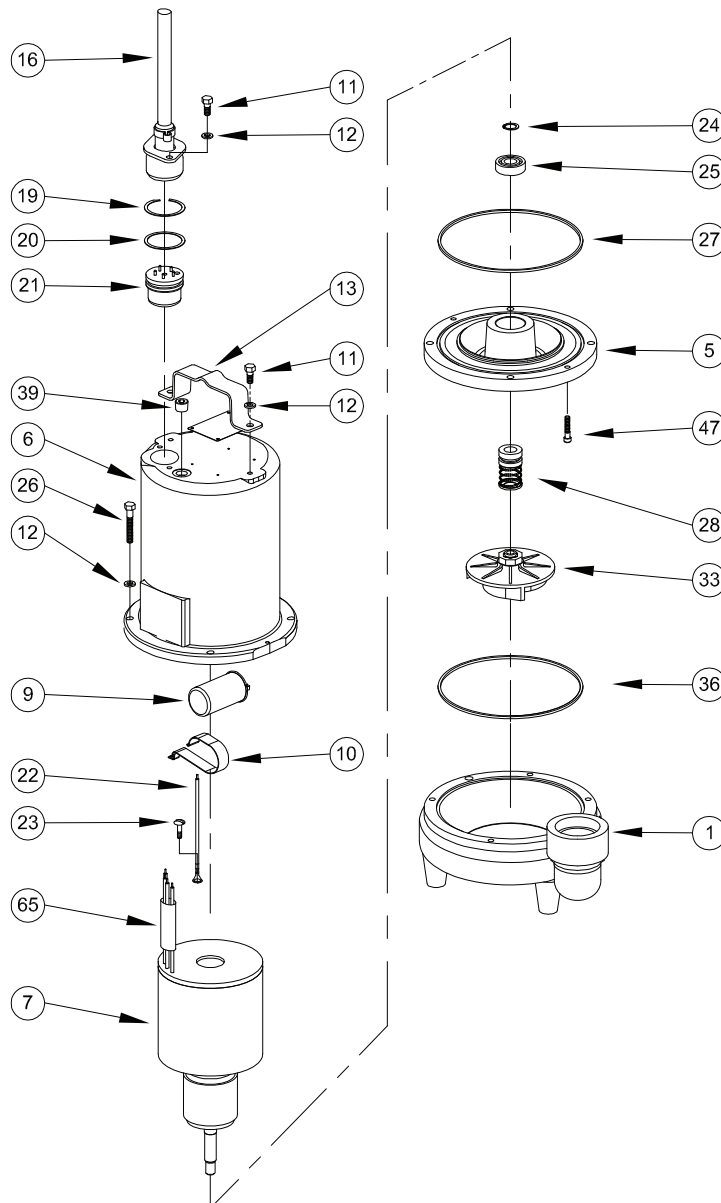
BARNES®

www.cranepumps.com

BARNES • PROSSER • CROWN SERVICE PARTS

MODEL	PART NO.	MODEL	PART NO.
EH512L	105058	EH1542L	105078
EH522L	105059	EH1552L	105079
EH592L	105060		
EH542L	105061		
EH552L	105062		
EH1022L	105068		
EH1092L	105069		
EH1042L	105070		
EH1052L	105071		
EH1522L	105076		
EH1592L	105077		

Manual: 105244



Continued →

SECTION 3A
PAGE 40
DATE 6/06

CRANE®

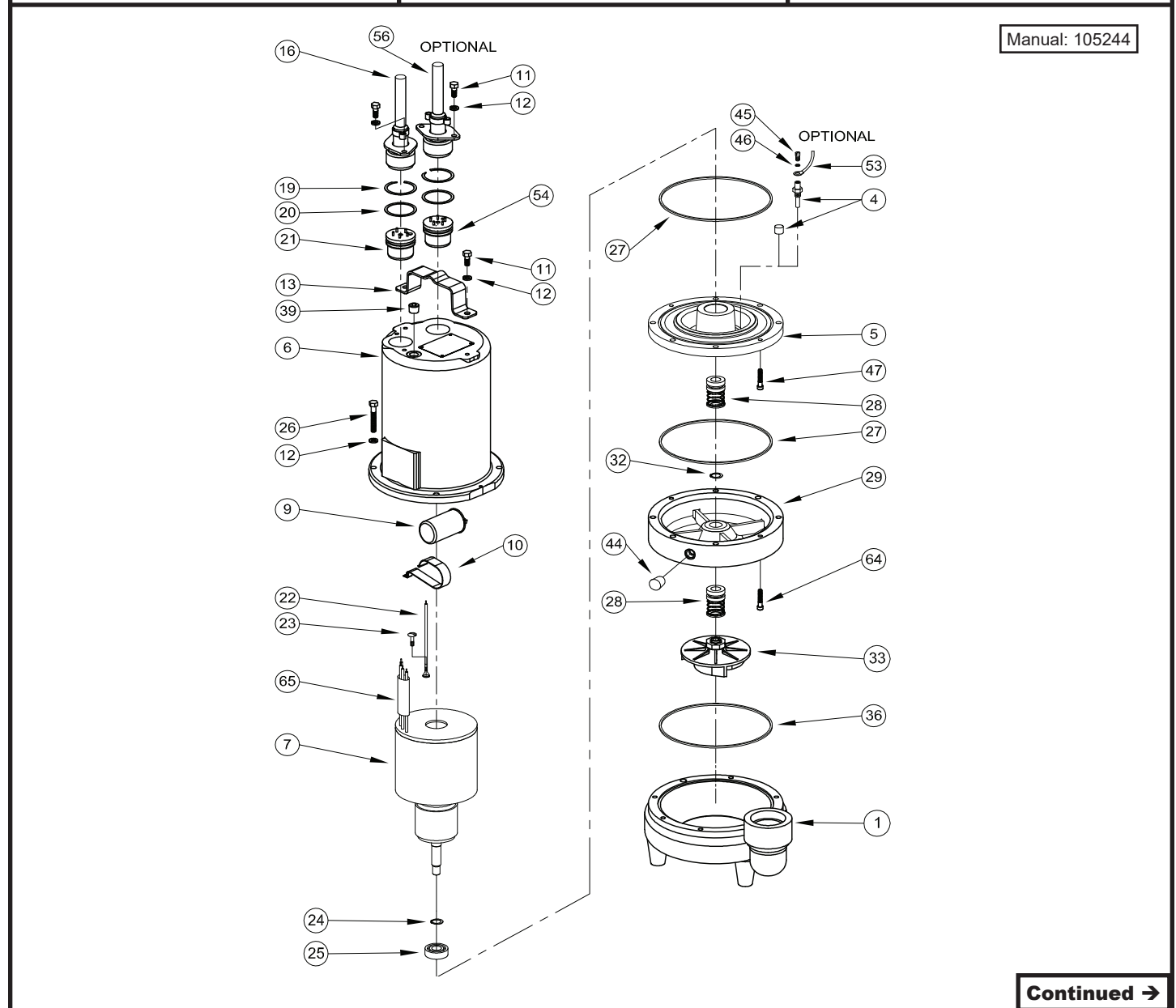
A Crane Co. Company

PUMPS & SYSTEMS

USA: (937) 778-8947 • Canada: (905) 457-6223 • International: (937) 615-3598

BARNES • PROSSER • CROWN SERVICE PARTS

MODEL	PART NO.	MODEL	PART NO.
EH512DS	105063	EH1542DS	105082
EH522DS	105064	EH1552DS	105083
EH592DS	105065		
EH542DS	105066		
EH552DS	105067		
EH1022DS	105072		
EH1092DS	105073		
EH1042DS	105074		
EH1052DS	105075		
EH1522DS	105080		
EH1592DS	105081		



BARNES • PROSSER • CROWN SERVICE PARTS

PARTS KITS

Seal Repair Kits:

Single Seal P/N - **130180** (+) 20, 27, 28, 36

Double Seal P/N - **130176** (†) 20, 27, 28, 32, 36

Service Kits:

Single Seal..... P/N - **130207** (◇) 19, 20, 22, 24, 25, 27, 28, 36, 49, 65, 66

Double Seal P/N - **130172** (◆) 19, 20, 22, 24, 25, 27, 28, 32, 36, 44, 49, 65, 66

Seal Tool Kit P/N - **107271**

Pressure Gauge Kit P/N - **085343**

ITEM	QTY.	PART NO.	DESCRIPTION	
1	1	068540A	Volute	
4	2	003217	Pipe Plug	All double seal (Std), .25" NPT, ZP
	2	039383	Moisture Sensor Probes	(Optional) for moisture sensor
5	1	084532	Seal Plate	All single seal
		084906	Seal Plate	All double seal
6	1	105196	Motor Housing	(Std)
		105196HA	Motor Housing	(Optional) for moisture and temp. sensors
7	1		Motor:	
		068926BS	EH512L	
		068926BD	EH512DS	
		068927BS	EH522L	
		068927BD	EH522DS	
		068928BS	EH1022L	
		068928BD	EH1022DS	
		071355BS	EH532L, EH542L, EH1032L, EH1042L	
		071355BD	EH532DS, EH542DS, EH1032DS, EH1042DS	
		067463FBS	EH552L, EH1052L	
		067463FBD	EH552DS, EH1052DS	
		103534BS	EH1522L	
		103534BD	EH1522DS	
		103535BS	EH1532L, EH1542L	
		103535BD	EH1532DS, EH1542DS	
		103536BS	EH1552L	
		103536BD	EH1552DS	
8	96oz	029034	Oil	All single seal
	120oz	029034	Oil	All double seal (Includes 24oz in Seal Chamber)
9	1	070965	Capacitor	1 Phase, .5 & 1.0Hp
	1	035864	Capacitor	1 Phase, 1.5Hp
10	1	039858	Capacitor Bracket	1 Phase
11	4	1-129-1	Hex. Hd. Cap Screw	(Std), 5/16-18 x .75" Lg., Stainless
	6	1-129-1	Hex. Hd. Cap Screw	(Optional) for moisture and temp. sensors
12	8	026322	Lockwasher	(Std), 5/16, Stainless
	10	026322	Lockwasher	(Optional) for moisture and temp. sensors
13	1	103503	Handle	
16	1	See Table 2	Power Cable Set	
16a	1	103582	Compression Flange	Included with cable
19	1	105197	◇ Snap Ring	(Std)
	2	105197	◆ Snap Ring	(Optional) for moisture and temp. sensors
20	1	2-31051-224	+◇ O-ring	(Std)
	2	2-31051-224	†◆ O-ring	(Optional) for moisture and temp. sensors
21	1	103584	Terminal Block	1 Phase
		103583		3 Phase
22	1	105111	◆◆ Ground Wire Assembly	(Std)
	2	105111	Ground Wire Assembly	(Optional) for moisture and temp. sensors
23	1	016660	Screw	#8-32 x .375" Lg.
24	1	085326	◆◆ Retaining Ring	Included with motor

Continued →

BARNES • PROSSER • CROWN SERVICE PARTS

ITEM	QTY.	PART NO.		DESCRIPTION	
25	1	017414	◆◆	Bearing	
26	4	1-135-1		Cap Screw	All single seal, 5/16-18 x 1.75" Lg., Stainless
		1-168-1		Cap Screw	All double seal, 5/16-18 x 3.50" Lg., Stainless
27	1	027269	+†◆◆	Square Ring	All single seal
	2	027269		Square Ring	All double seal
28	1		+†◆◆	Shaft Seal: (Qty 2 for DS)	
		005080		Carbon/Ceramic/Buna-N (STD)	
		005080SB		Tungsten/Tungsten/Buna-N	
		005080SD		Silicon Carbide/Silicon Carbide/Buna-N	
		005080SF		Carbon/Ceramic/Viton	
		005080SH		Tungsten/Tungsten/Viton	
		005080SK		Silicon Carbide/Silicon Carbide/Viton	
		005080SM		Silicon Carbide/Tungsten/Buna-N	
		005080SN		Carbon/Ni-Resistant/Buna-N	
		005080SP		Carbon/Ni-Resistant/Neoprene	
		082850		Carbon/Ni-Resistant/Viton	
29	1	103587		Seal Housing	All double seal
32	1	2-27008-62	†◆	Retaining Ring	All double seal
33	1			Impeller, Polypropylene	
		103513		4.75 Dia. (STD for 1.5 HP)	
		103513TA		4.63 Dia.	
		103513TB		4.50 Dia. (STD for 1.0 HP)	
		103513TC		4.38 Dia.	
		103513TD		4.25 Dia.	
		103513TE		4.13 Dia.	
		103513TF		4.00 Dia.	
		103513TG		3.88 Dia. (STD for .5 HP)	
		103513TH		3.75 Dia.	
		103513TJ		3.63 Dia.	
		103513TK		3.50 Dia.	
				Impeller, Cast Iron	
		103514		4.75 Dia.	
		103514TG		3.88 Dia.	
36	1	033730	+†◆◆	Square Ring	
39	1	014270		Pipe Plug	.375" NPT, ZP
41	A/R			Loctite 242	
42	A/R			Permatex2C	
44	1	003217		Pipe Plug	All double seal, .25" NPT, ZP
45	2	5-32-6		Screw (Optional) for moisture sensor, #6-32 x .25" Lg., ZP	
46	2	052563		Lockwasher	(Optional) for moisture sensor, #6 Stl.
47	2	084948		Socket Head Screw	1/4-20 x 1.25" Lg., Stainless
48	4	105150		Terminal Connector	200-240V, 3Ph
	3	625-00163		Terminal Connector	480V, 3Ph.
49	3	105149	◆◆	Wire Assembly	200-240V, 3Ph
50	1	051621		Thermal Sensor	Optional for temperature sensor
51	2	105155	◆	Wire Assembly	Optional for temperature sensor
52	2	625-00163		Terminal Connector	Optional for temperature sensor
53	2	105106		Wire Assembly	Optional for moisture sensor
54	1	103584		Terminal Block	Temperature sensor options
		103585			Moisture and temp. sensor options
56	1	See Table 2		Control Cable	Optional for moisture and/or temp. sensors
64	2	030337		Socket Head Cap Screw	Double seal Only, 1/4-20 x 2.00" Lg., Stainless
65	1	625-02117	◆◆	Sleeve, Fiberglass	
66	1	030068	◆◆	Jam nut	½ - 20, S.S.
67	A/R	-----		Loctite 603	
69	1	111909		Jumper Wire	

Continued →

Series: EH-L

Submersible Effluent Pumps

.5 & 1.0 & 1.5HP, 3450RPM

BARNES®

www.cranepumps.com

BARNES • PROSSER • CROWN SERVICE PARTS**TABLE 2 - POWER & CABLE SENSOR CABLE SETS**

CABLE LENGTH	ITEM #16 120 Volt, 1 Phase (plug included)	ITEM # 16 240 Volt, 1 Phase (plug included)	ITEM # 16 3 Phase (no plug)	ITEM #56 (OPTIONAL) Temperature 3 Phase	ITEM #56 (OPTIONAL) Moisture & Temperature Sensor - 3 Phase or Moisture Sensor Only.
8 Ft.	103756A	-----	103742A	103741A	103740A
15 Ft.	103756	110949	103742	103741	103740
20 Ft. (STD)	103756XA	110949XA	103742XA	103741XA	103740XA
30 Ft.	103756XC	110949XC	103742XC	103741XC	103740XC
50 Ft.	103756XF	110949XF	103742XF	103741XF	103740XF
75 Ft.	103756XJ	110949XJ	103742XJ	103741XJ	103740XJ
100 Ft.	103756XL	110949XL	103742XL	103741XL	103740XL

ENDSECTION 3A
PAGE 44
DATE 12/19**CRANE®**

A Crane Co. Company

PUMPS & SYSTEMS

USA: (937) 778-8947 • Canada: (905) 457-6223 • International: (937) 615-3598