

PRODUCT INFORMATION PACKET



Model No: 284TTGN16540AA

Catalog No: 825081.00

..25HP..1800RPM.284TC.EPFC.230/460V.3PH.60HZ.CONT.40C.1.15SF.RIGID-C.....

Explosion Proof



Regal and Leeson are trademarks of Regal Beloit Corporation or one of its affiliated companies.

©2018 Regal Beloit Corporation, All Rights Reserved. MC017097E



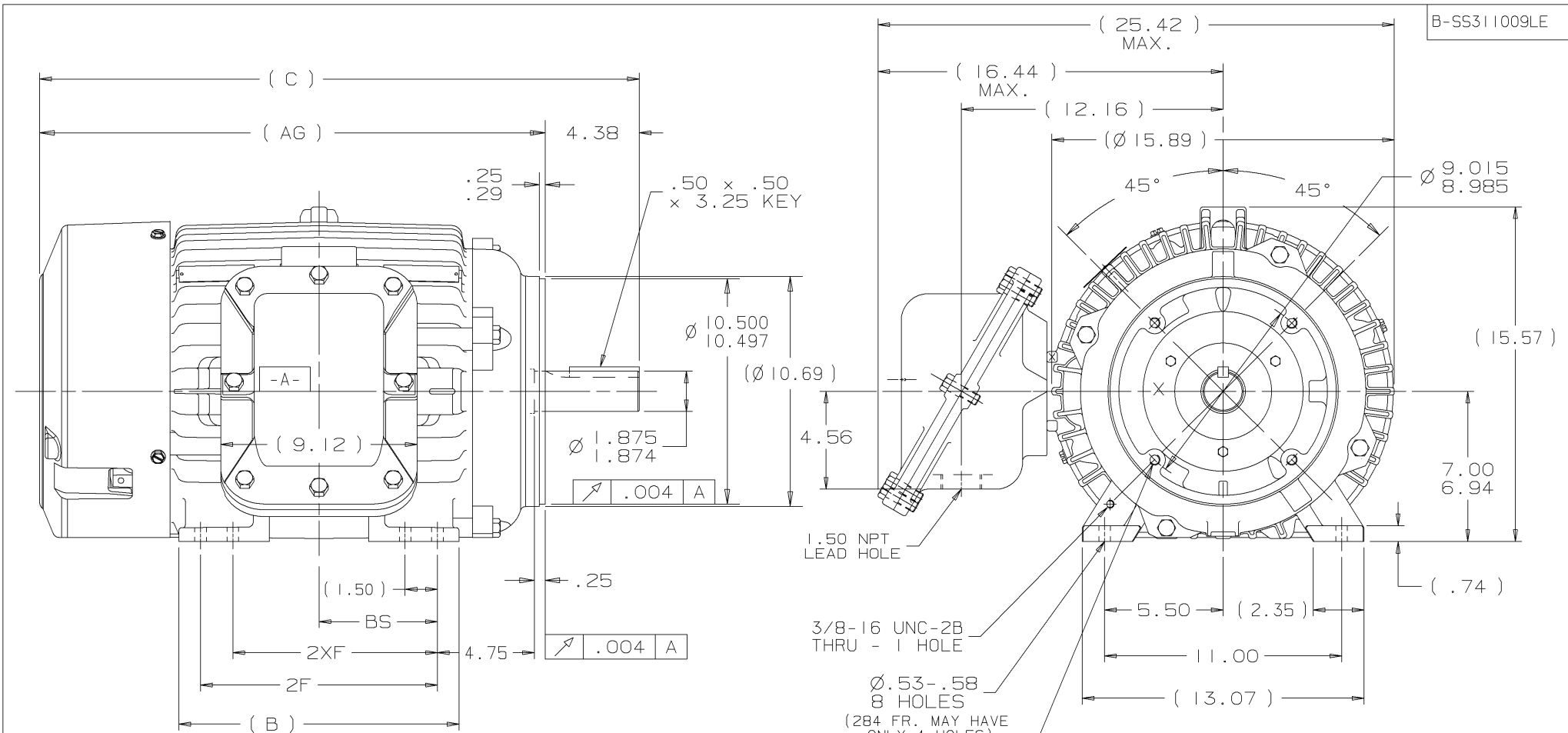


Nameplate Specifications

Output HP	25 Hp	Output KW	18.7 kW
Frequency	60 Hz	Voltage	230/460 V
Current	62.0/31.0 A	Speed	1774 rpm
Service Factor	1.15	Phase	3
Efficiency	93.6 %	Duty	Continuous
Insulation Class	F	Design Code	B
KVA Code	G	Frame	284TC
Enclosure	Explosion Proof Fan cooled	Overload Protector	No
Ambient Temperature	40 °C	Drive End Bearing Size	311
Opp Drive End Bearing Size	210	UL	No
CSA	N	CE	N
IP Code	54		

Technical Specifications

Electrical Type	Squirrel Cage Inverter Rated	Starting Method	Line Or Inverter
Poles	4	Rotation	Reversible
Mounting	Rigid base	Motor Orientation	HORIZONTAL
Drive End Bearing	BALL	Opp Drive End Bearing	BALL
Frame Material	Cast Iron	Shaft Type	T
Overall Length	26.34 in	Frame Length	12.75 in
Shaft Diameter	1.875 in	Shaft Extension	4.62 in
Assembly/Box Mounting	F1 ONLY		
Outline Drawing	B-SS311009LE-1275	Connection Diagram	A-EE7308T-LE



B-SS311009LE

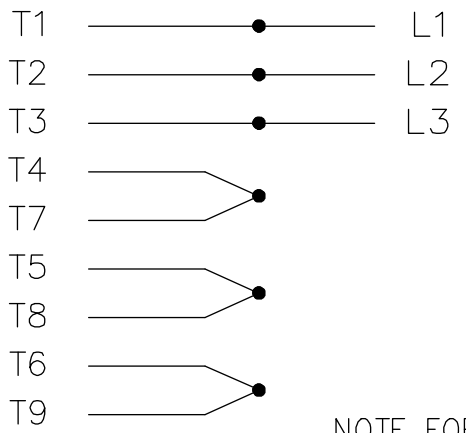
- NOTES:
1. BOX CAN ONLY BE ROTATED CLOCKWISE UP TO 270° FROM ITS ORIGINAL POSITION.
 2. NAMEPLATE TO BE READ FROM CONDUIT BOX SIDE OF MOTOR.

DASH	FRAME	B	AG	C	2F	2XF	BS				TOLERANCES UNLESS SPECIFIED	LEESON ELECTRIC MOTORS GEARMOTORS AND DRIVES	DRAWN		
1275	284TC	12.50	21.96	26.34	9.50		4.75				DEC. TOLERANCE			CAV 05-29-2002	
1425	284/286TC	13.00	23.46	27.84	11.00	9.50	5.50				.X ±.1	TITLE	CHK ML 05-30-2002		
											.XX ±.03	OUTLINE EXP. PR. TGN	APPD BW 05-30-2002		
											.XXX ±.005	280TC FR. BB STD. 12.50 LAM	SCALE		
											.XXXX ±.0005	✓ SURFACE ROUGHNESS UNLESS SPECIFIED	REF		
											±7'30"	MAT'L.	FMF		
												FINISH	PREV		
										PURCHASED	CAD FILE 55311009	SHOP BOOK	SIZE	DRAWING NO.	REV.
										DIST	W - LB - W - U - R - B	B	SS311009LE	I	

THIS DRAWING IN DESIGN AND DETAIL IS OUR PROPERTY AND MUST NOT BE USED EXCEPT IN CONNECTION WITH OUR WORK. ALL RIGHTS OF DESIGN AND INVENTION ARE RESERVED. THIS IS AN ELECTRONICALLY GENERATED DOCUMENT - DO NOT SCALE THIS PRINT

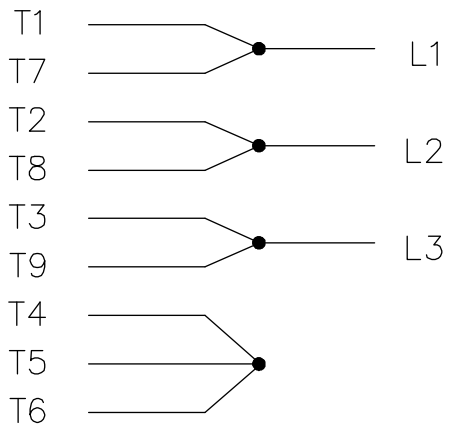
THREE PHASE
DUAL VOLTAGE MOTOR

HIGH VOLTAGE

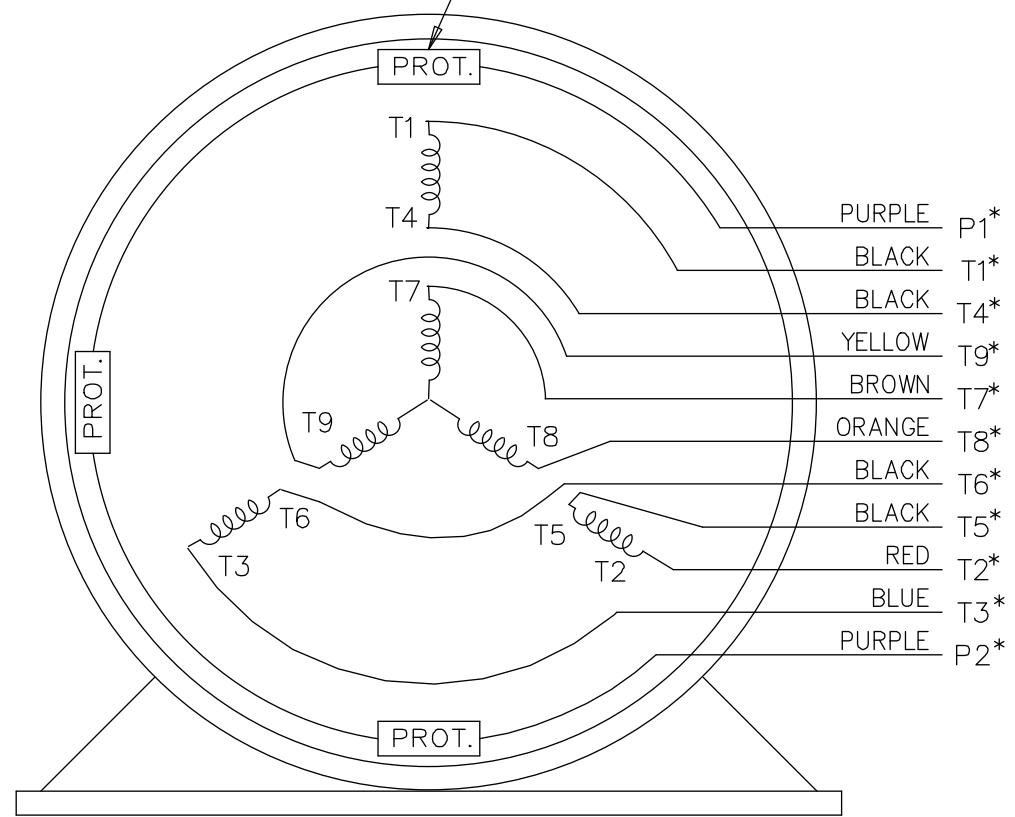


NOTE FOR FACTORY USE ONLY:
 TO SURGE TEST FOR COMMON CONNECT:
 HIGH VOLT: CONNECT P1 TO T1
 THEN P2 TO L1
 LOW VOLT: CONNECT P1 TO T1 & T7,
 THEN P2 TO L1

LOW VOLTAGE




THREMO-PROTECTORS
CONNECTED IN SERIES.



VIEW OF TERMINAL END

* USE LEADS AS PER PLANT STANDARD IRRWSPECTIVE OF THEIR COLOUR.

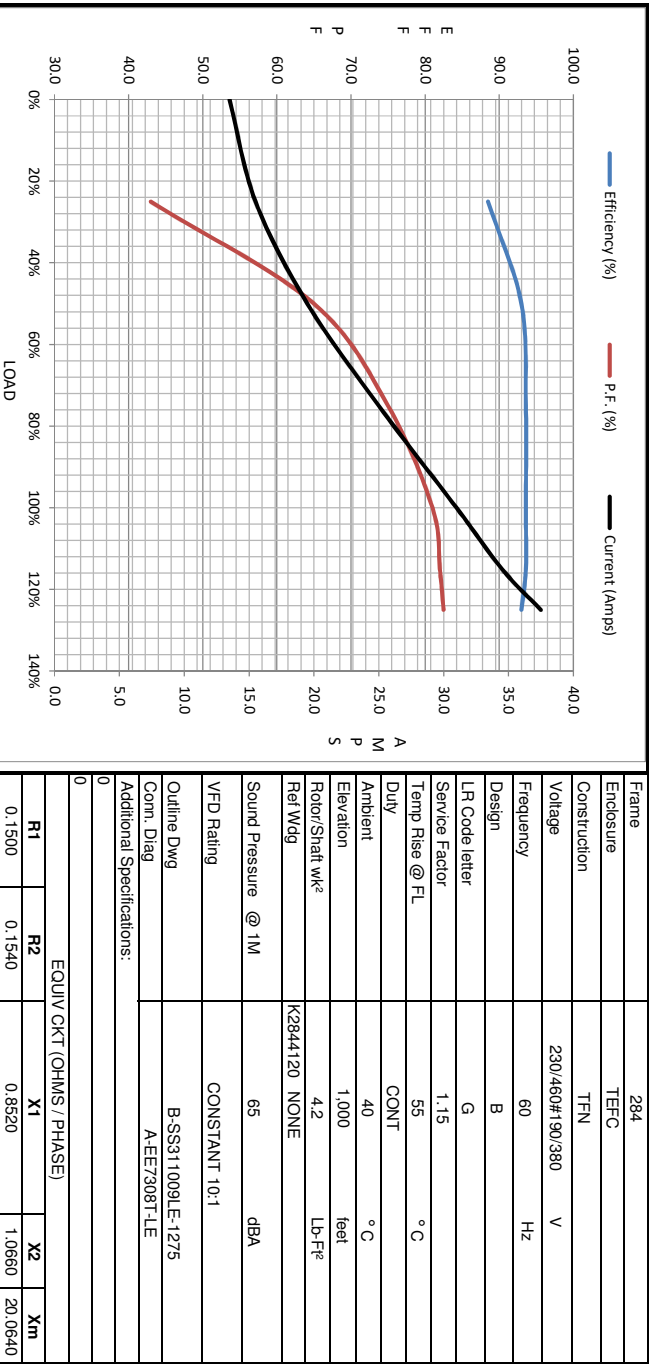
				TOLERANCES UNLESS SPECIFIED		 ELECTRIC MOTORS GEARMOTORS AND DRIVES	DRAWN TJB 05-07-2002			
NO.	REVISION	BY & DATE	CHK	ANG	±		SIZE	DRAWING NO.	PAGE OF	REV.
05	ADDED * NOTE PER ECN # 26921	UD 01-30-2013	JD	DEC.	INCHES	TITLE CONNECTION DIAGRAM 3 PHASE - DUAL VOLTAGE MOTOR	CHK	ML	05-08-2002	
04	ADDED COLORS TO "T & P" LEADS CN 40494	MSG 08-08-2006	ML	.X	±.1		APPD	TB	05-08-2002	
03	RE-ISSUE	NJS 04-21-2004	JET	.XX	±.02		SCALE	1=1		
02	REDRAWN	TAT 04-20-2004	ML	.XXX	±.005		REF			
01	NEW DRAWING CN 34708	TJB 05-08-2002	ML	.XXXX	±.0005		FINISH	FMF		
			RFP			CAD FILE	EE7308T_LE	A	EE7308T-LE	05
			DIST	LB-WP-LE						

THIS DRAWING IN DESIGN AND DETAIL IS OUR PROPERTY AND MUST NOT BE USED EXCEPT IN CONNECTION WITH OUR WORK ALL RIGHTS OF DESIGN AND INVENTION ARE RESERVED THIS IS AN ELECTRONICALLY GENERATED DOCUMENT - DO NOT SCALE THIS PRINT



Motor Load Data								
Load	0%	25%	50%	75%	100%	115%	125%	LR
Current (Amps)	13.5	15.5	19.5	25.0	31.0	34.5	37.5	181
Torque (ft-lb)	0.00	18.5	37.0	55.5	74.0	85.5	93.0	140
RPM	1800	1795	1785	1780	1774	1765	1760	0
Efficiency (%)		88.5	93.0	93.6	93.6	93.6	93.0	
P.F. (%)	5.5	43.0	65.0	75.0	81.0	82.0	82.5	33.0

Motor Speed Data						Information Block																						
LR	Pull-Up	BD	Rated	Idle		HP	Sync. RPM	Frame	Enclosure	Construction	Voltage	Frequency	Design	LR Code letter	Service Factor	Temp Rise @ FL	Duty	Ambient	Elevation	Rotor/Shaft wk ²	Ref Wdg	Sound Pressure @ 1M	VFD Rating	Outline Dwg	Conn. Diag	Additional Specifications:		
0	900	1675	1774	1800		25.0	1800	284	TEFC	TFN	230/460#190/380	60	B	G	1.15	55	CONT	40 °C	1,000	4.2	NONE	K2844120	65	dB(A)	CONSTANT 10:1	B-SS311009LE-1275	A-EE7308T-1E	
Current (Amps)	181	165	125	31.0	13.5																							
Torque (ft-lb)	140	130	215	74.0	0.00																							



EQUIV CKT (OHMS / PHASE)			
R1	R2	X1	X2
0.1500	0.1540	0.8520	1.0680
			20.0640

