

PRODUCT INFORMATION PACKET

Model No: 286TTDN16330
Catalog No: M726
30,1800,DP,286HPV,3/60/230/460
Vertical Solid Shaft P-Base



Regal and Marathon are trademarks of Regal Beloit Corporation or one of its affiliated companies.
©2018 Regal Beloit Corporation, All Rights Reserved. MC017097E





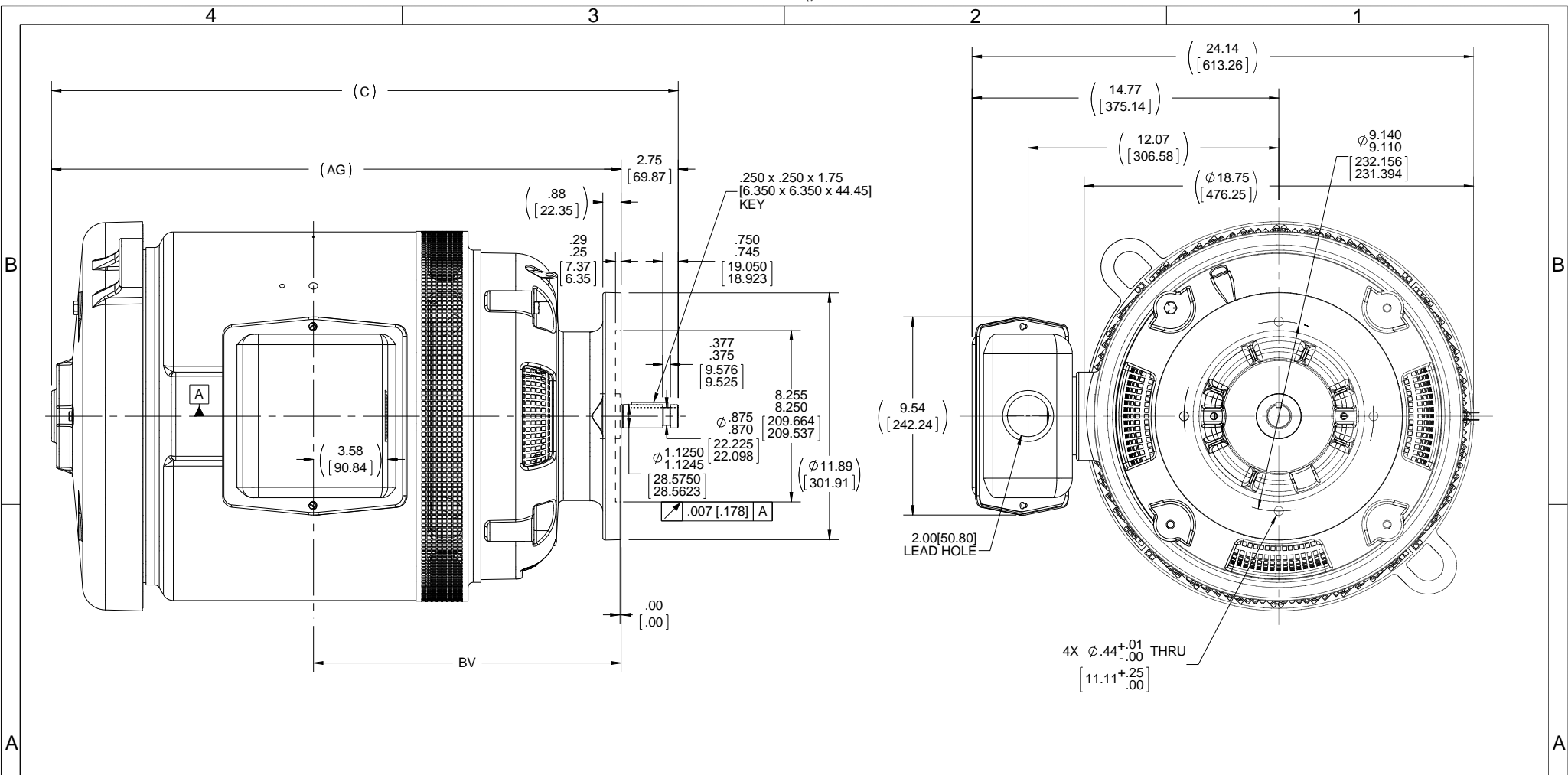
Nameplate Specifications

Output HP	30 Hp	Output KW	22.4 kW
Frequency	60 Hz	Voltage	230/460 V
Current	74.0/37.0 A	Speed	1775 rpm
Service Factor	1.15	Phase	3
Efficiency	94.1 %	Duty	Continuous
Insulation Class	F	Design Code	B
KVA Code	G	Frame	286HPV
Enclosure	Drip Proof	Overload Protector	No
Ambient Temperature	40 °C	Drive End Bearing Size	6311
Opp Drive End Bearing Size	6311	UL	Recognized
CSA	Y	CE	Y
IP Code	12		

Technical Specifications

Electrical Type	Squirrel Cage Induction Run	Starting Method	Across The Line
Poles	4	Rotation	Reversible
Mounting	Round	Motor Orientation	SHAFT DOWN
Drive End Bearing	BALL	Opp Drive End Bearing	BALL
Frame Material	Cast Iron	Shaft Type	HP
Overall Length	30.18 in	Frame Length	16.12 in
Shaft Diameter	1.125 in	Shaft Extension	2.75 in
Assembly/Box Mounting	F1/F2 CAPABLE		
Outline Drawing	B-SS312773-1612	Connection Diagram	A-EE7308

This is an uncontrolled document once printed or downloaded and is subject to change without notice. Date Created: 10/30/2018



- NOTES:
 1. CONDUIT BOX CAN BE ROTATED IN 90° STEPS.
 2. NAMEPLATES TO BE READ FROM SHAFT EXTENSION END OF MOTOR.

DASH	FRAME	C	BV	AG
1612	284/6HP	30.18 [766.57]	14.81 [376.17]	27.43 [696.72]

DRAWING REVISION A	REVISION BY	DATE
ECO-0100318	APPROVED BY	DATE
ECO DESCRIPTION MU122807 / NMR-0105977		

COPYRIGHT REGAL BELOIT AMERICA, INC. ALL RIGHTS RESERVED.
 PROPRIETARY AND CONFIDENTIAL INFORMATION - THIS DOCUMENT IS THE PROPERTY OF REGAL BELOIT AMERICA, INC. ('OWNER') AND CONTAINS OWNER'S PROPRIETARY INFORMATION. ANY PERSON, CORPORATION OR OTHER FIRM RECEIVING IT IS DEEMED, BY RECEIVING IT, TO AGREE THAT IT, AND/OR ANY PART OF IT, SHALL NOT BE DISCLOSED TO ANY PERSON, CORPORATION OR OTHER ENTITY, DUPLICATED, AND/OR USED, EXCEPT AS EXPRESSLY APPROVED IN WRITING IN ADVANCE BY OWNER. THIS DOCUMENT SHALL BE RETURNED TO OWNER UPON REQUEST. IT MAY BE SUBJECT TO CERTAIN RESTRICTIONS UNDER APPLICABLE EXPORT CONTROL LAWS AND REGULATIONS.

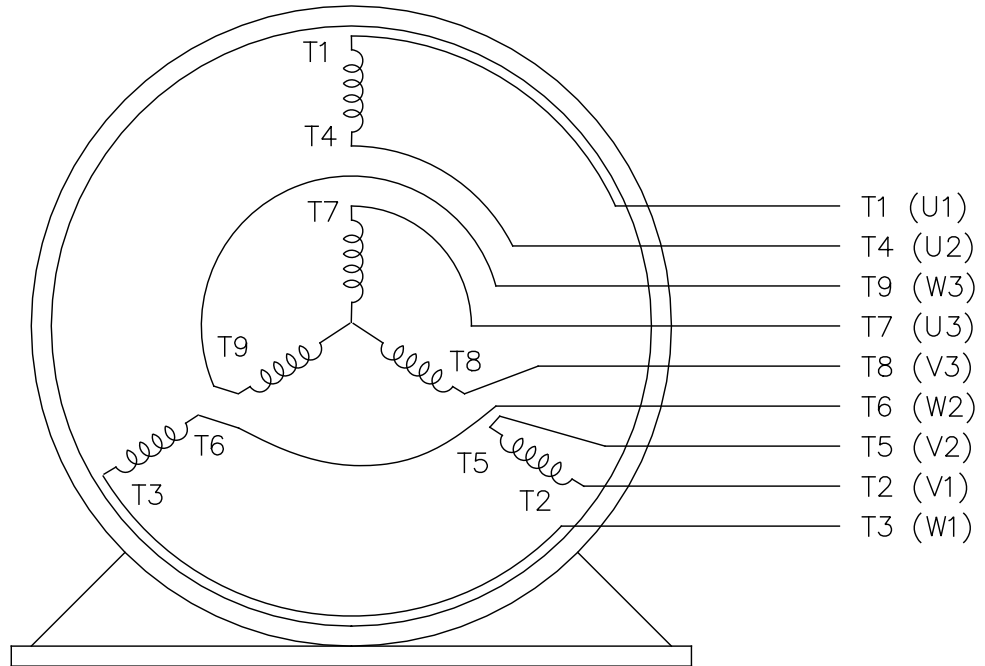
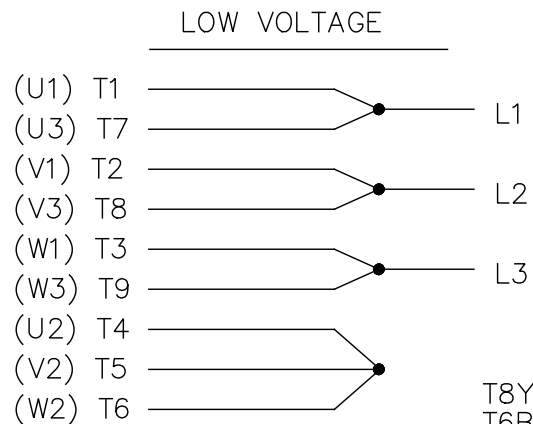
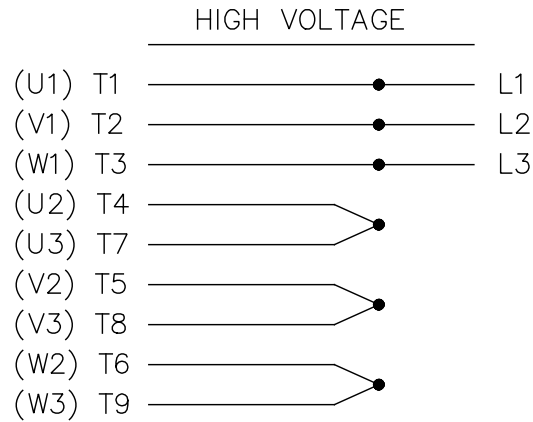
TOLERANCES UNLESS OTHERWISE SPECIFIED:		
DEC.	INCH	mm
-X	+0.1	[+2.5]
.XX	+0.03	[+0.76]
.XXX	+0.005	[+0.127]
.XXXX	+0.0005	[+0.0127]
REMOVE BURRS & BREAK SHARP		
EDGES: .003/.015 [.076/.381] X 45°		
CORNER FILLETS: R.02 [.51]		
MACHINED SURFACES: 200 $\sqrt{\text{mm}}$ 5.1 $\sqrt{\text{INCH}}$		
mm SHOWN IN [BRACKETS]		

DRAWN BY LPC
DATE 04-21-2016
APPROVED BY TB
DATE 04-21-2016
REFERENCE
THIRD ANGLE PROJECTION

Regal Beloit America, Inc.	
DESCRIPTION OUTLINE 280 HP FR. - P'BASE - VERT. DR.PR.	
MATERIAL	PROCESS/FINISH
SIZE B	DRAWING NUMBER SS312773
	SHEET 1 OF 1

EE7308

THREE PHASE
DUAL VOLTAGE MOTOR



VIEW OF TERMINAL END

REF.
WINDING DIAGRAM

T8Y, T2Y, T2BL, T4BX, T2EC, T2G
T6BZ, T2B, T6BL, T4AV, T6B, T4B

OPTIONAL CORD
CONNECTION

L1 — WHITE
L2 — RED
L3 — BLACK

NO.	REVISION	BY & DATE	CHK	ANG	TOLERANCES UNLESS SPECIFIED		FINISH	DRAWN RM 11/20/1990				
					DEC.	INCHES						
5	CHG TO REGAL LOGO	SL 09/10/2015	AB					CHK ML 11/21/1990				
4	REVISED IEC NOTATIONS	MSG 11/15/2011	CMN	.X	±.1			APPD SAS 04/24/2003				
3	ADDED IEC NOTATIONS... (U1), (V1) ETC. MU95194	MSG 5/10/2010	MJS	.XX	±.02			SCALE 1=1				
2	ADDED THE OPTIONAL CORD CONNECTION MU46318	RDH 04/24/2003	DRS	.XXX	±.005		TITLE CONNECTION DIAGRAM 3Ø - DUAL VOLTAGE MOTOR	REF				
1	REDRAWN	RM 11/20/1990		.XXXX	±.0005		MAT'L.	FMF				
					±7'30"			PREV				
THIS DRAWING IN DESIGN AND DETAIL IS OUR PROPERTY AND MUST NOT BE USED EXCEPT IN CONNECTION WITH OUR WORK ALL RIGHTS OF DESIGN AND INVENTION ARE RESERVED THIS IS AN ELECTRONICALLY GENERATED DOCUMENT - DO NOT SCALE THIS PRINT							RFP	CAD FILE ee7308	SIZE A	DRAWING NO. EE7308	PAGE OF 5	REV. 5
							DIST WP					



Regal Beloit America, Inc.

3Ø - DUAL VOLTAGE MOTOR

SIZE

A

DRAWING NO.

EE7308

PAGE

OF

REV.

5



P.O. BOX 8003
WAUSAU, WI 54401-8003
PH. 715-675-3311

DATA VOLTS: 460

CERTIFICATION DATA SHEET

CUSTOMER P.O. #:
 ORDER #: A-EE7308
 REFERENCE MODEL #: 286TTDNI6330
 CONN. DIAGRAM: B-SS912773-1612
 CAT #: M726
 OUTLINE: K2864304
 CUSTOMER PART #:
 WINDING: NONE 3
 MOUNTING: F1/F2 CAPABLE
 SPEED:
 TYPICAL MOTOR PERFORMANCE DATA

HP	KW	SYNC RPM	FL RPM	FRAME	ENCLOSURE	TYPE	KVA CODE	DESIGN
30	22.4	1800	1772	286HPV	DP	TDN	G	B

PH	HZ	VOLTS	AMPS	START TYPE	DUTY	INSL	S.F.	AMB	ELEV.
3	60/50	230/460#190/380	74/37&75/37.5	ACROSS-THE LINE	CONT	F	1.15	40	3300
	F.L. EFF	94.1	3/4 LD EFF	94.1	1/2 LD EFF	93.6	GTD EFF	ELECT. TYPE	
	F.L. PF	81.0	3/4 LD PF	76.5	1/2 LD PF	66.0	93.6	SQ CAGE IND RUN	

F.L. TORQUE	LR AMPS @ 460 V	L.R. TORQUE	B.D. TORQUE	F.L. RISE (°C)
89.0 LB-FT	208	160 LB-FT	180%	220 LB-FT
@ 3 FT.	POWER	ROTOR WK ²	MAX. LOAD WK ²	SAFE STALL TIME
72 DBA	81 DBA	4.7 LB-FT ²	0 LB-FT ²	0 SEC.
				START/SHOUR
				MOTOR WGT
				460 LB.

*** SUPPLEMENTAL INFORMATION ***

DE BRACKET TYPE	ODE BRACKET TYPE	MOUNT TYPE	MOTOR ORIENTATION	SEVERE DUTY	HAZARDOUS LOCATION	DRIP COVER	SCREENS	PAINT
P-BASE	STANDARD	ROUND	SHAFT DOWN	NO	NONE	YES	NONE	BLUE (ENAMEL)

BEARINGS	GREASE	SHAFT TYPE	SPECIAL DE	SPECIAL ODE	SHAFT MATERIAL	FRAME MATERIAL
DE BALL 6311	POLYREX EM	HP	NONE	NONE	1045 HOT ROLLED (C-204)	CAST IRON

THERMOSTATS	PROTECTORS	WDG RTD's	BRG RTD's	THERMISTORS	CONTROL	SPACE HEATERS
NONE	NOT	NONE	NONE	NONE	FALSE	NA

R1 (ohms/ph)	R2 (ohms/ph)	X1 (ohms/ph)	X2 (ohms/ph)	Xm (ohms/ph)	VIBRATION (in/sec)	FLOAT
0.132	0.109	0.709	0.889	16.821	0.150	ODE

* N	O	T	E	S	INVERTER TORQUE:	NONE
					INV. HP SPEED RANGE:	NONE
					ENCODER:	NONE
					BRAKE:	NONE
					FT-LB:	NA
					VOLTAGE:	NONE
					UL: V/INS, CONST UL REC	NONE
					HZ:	

PREPARED BY: FAREEDA DUDEKULA
 DATE: 9/11/2018
 FORM: 3531 REV 4 2/27/06

Data Sheet

286T1DN16330



Submital

Data @ 460 V

Date: 9/11/2018
 Customer: _____
 Attention: _____
 Submitted by: FAREEDA DUDEKULA

Load	Motor Load Data									
	0%	25%	50%	75%	100%	115%	125%	LR		
Current (Amps)	15.5	17.6	22.6	29.3	37.0	42.0	45.5	208		
Torque (ft-lb)	0.00	22.0	44.0	66.5	89.0	102	112	160		
RPM	1800	1792	1788	1782	1772	1,770	1768	0		
Efficiency (%)		91.0	93.6	94.1	94.1	93.6	93.0			
P.F. (%)	3.0	43.5	66.0	76.5	81.0	82.5	83.0	35.5		

Motor Speed Data					Information Block					
LR	Pull-Up	BD	Rated	Idle	HP	Frame	Enclosure	Construction	Voltage	Frequency
0	900	1678	1772	1800	30.0	286182TFC6080	DP	TDN	230/460#190/380	60
208	187	129	37.0	15.5						
Torque (ft-lb)	160	136	89.0	0.00						

Speed (RPM)	0	900	1678	1772	1800
Current (Amps)	208	187	129	37.0	15.5
Torque (ft-lb)	160	136	89.0	0.00	
HP	30.0				
Frame	286182TFC6080				
Enclosure	DP				
Construction	TDN				
Voltage	230/460#190/380 V				
Frequency	60 Hz				
Design	B				
LR Code letter	G				
Service Factor	1.15				
Temp Rise @ FL	45 °C				
Duty	CONT				
Ambient	40 °C				
Elevation	1,000 feet				
Motor/Shaft wk ²	4.7 Lb-Ft ²				
Ret Wdg	K2864304 NONE				
Sound Pressure @ 1M	72 dBA				
VFD Rating	NONE				
Outline Dwg	B-SS312773-1612				
Conn. Diag	A-EE7308				
Additional Specifications:					
	EQUIV CKT (OHMS / PHASE)				
	R1	R2	X1	X2	Xm
	0.1320	0.1090	0.7090	0.8690	16.8210

