

PRODUCT INFORMATION PACKET

Model No: 324TTFS16087
Catalog No: M898B
25,1200,TEFC,324HPV,3/60/230/460
Vertical Pump



Regal and Marathon are trademarks of Regal Beloit Corporation or one of its affiliated companies.
©2018 Regal Beloit Corporation, All Rights Reserved. MC017097E





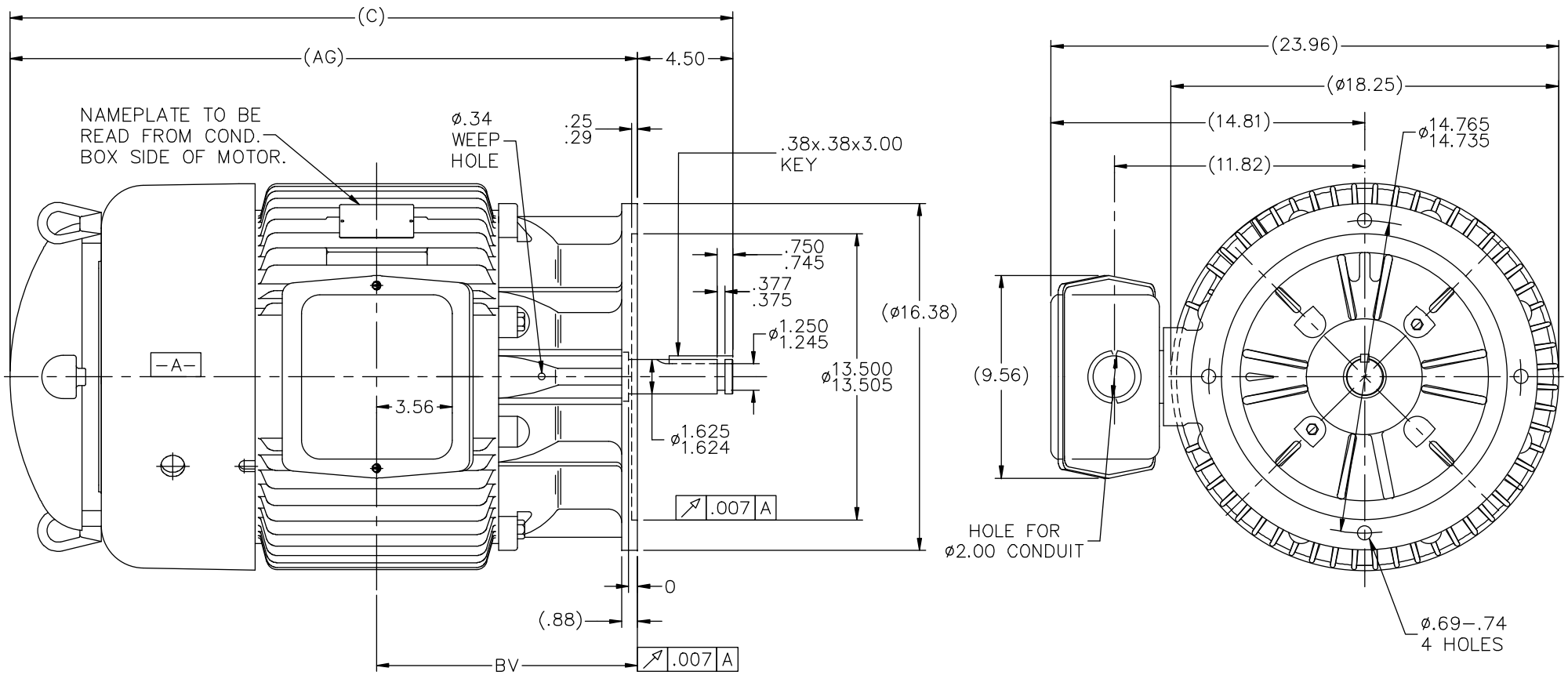
Nameplate Specifications

| | | | |
|----------------------------|------------------------------------|------------------------|-------------------|
| Output HP | 25 Hp | Output KW | 18.7 kW |
| Frequency | 60 Hz | Voltage | 230/460 V |
| Current | 65.0/32.5 A | Speed | 1182 rpm |
| Service Factor | 1.15 | Phase | 3 |
| Efficiency | 93 % | Duty | Continuous |
| Insulation Class | F | Design Code | B |
| KVA Code | G | Frame | 324HPV |
| Enclosure | Totally Enclosed Fan Cooled | Overload Protector | No |
| Ambient Temperature | 40 °C | Drive End Bearing Size | 6311 |
| Opp Drive End Bearing Size | 6311 | UL | Recognized |
| CSA | Y | CE | Y |
| IP Code | 43 | | |

Technical Specifications

| | | | |
|-----------------------|------------------------------------|-----------------------|------------------------|
| Electrical Type | Squirrel Cage Induction Run | Starting Method | Across The Line |
| Poles | 6 | Rotation | Reversible |
| Mounting | Round | Motor Orientation | Shaft Down |
| Drive End Bearing | Ball | Opp Drive End Bearing | Ball |
| Frame Material | Cast Iron | Shaft Type | HP |
| Overall Length | 35.62 in | Frame Length | 13.00 in |
| Shaft Diameter | 1.625 in | Shaft Extension | 4.5 in |
| Assembly/Box Mounting | F1/F2 Capable | | |
| Outline Drawing | B-SS28363-1300 | Connection Diagram | A-EE7308K |

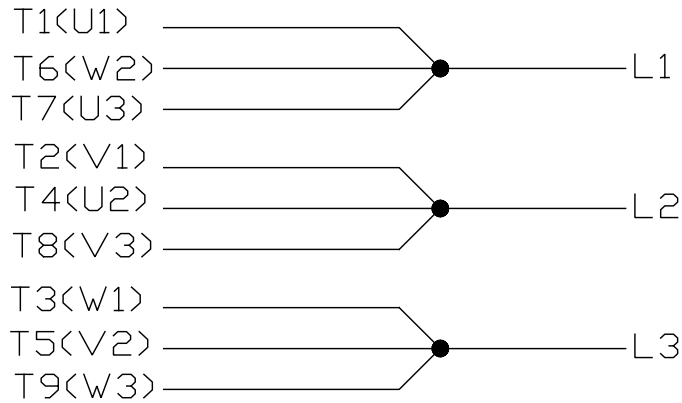
This is an uncontrolled document once printed or downloaded and is subject to change without notice. Date Created: 06/29/2018



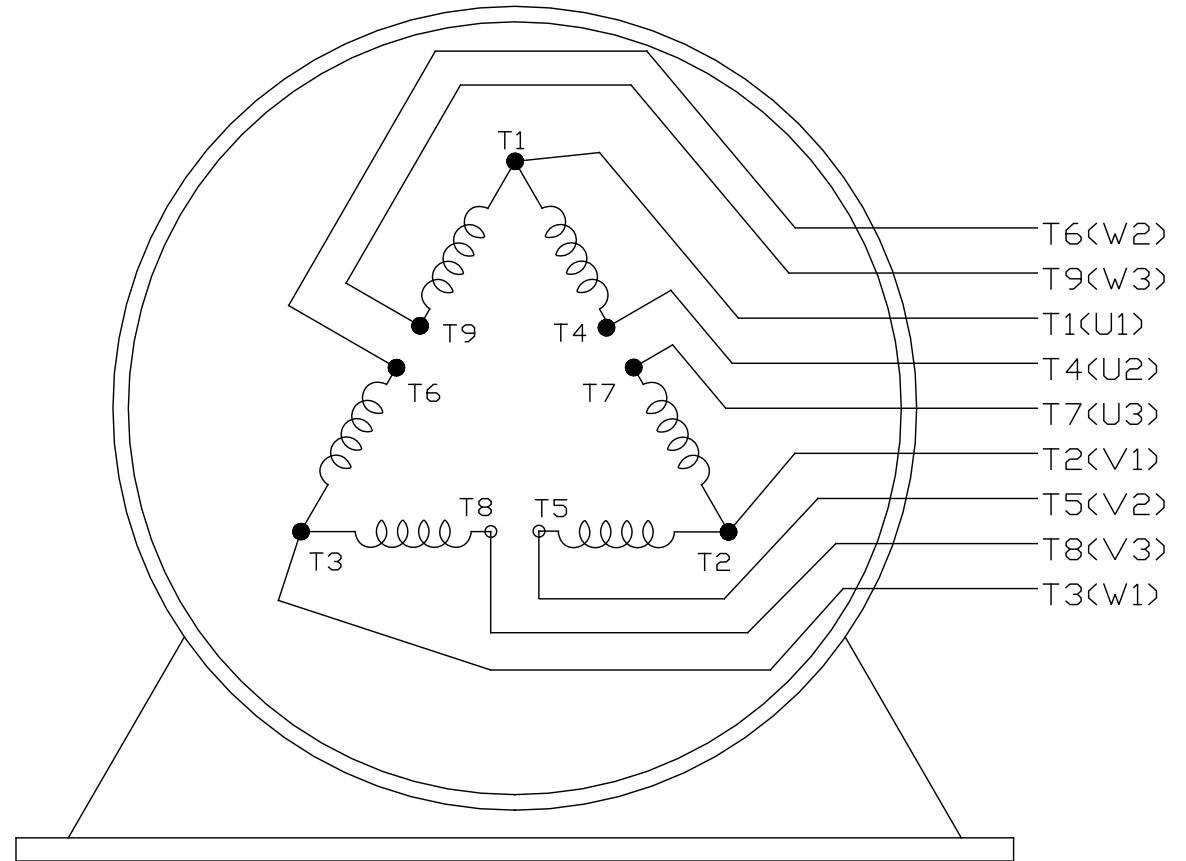
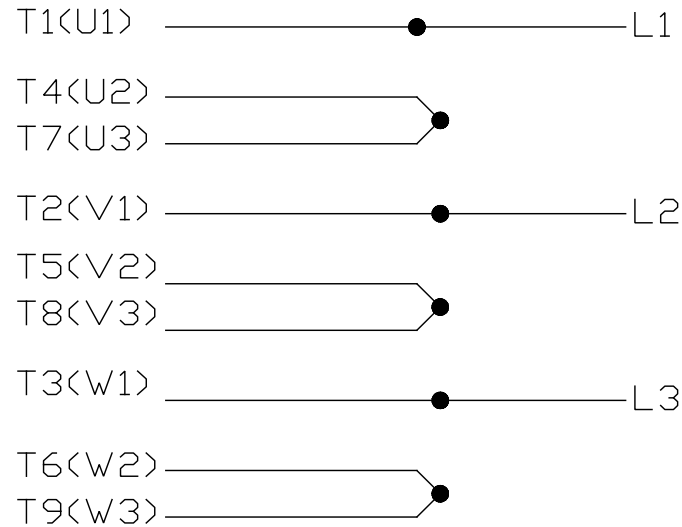
| DASH | FRAME | C | AG | BV |
|------|-------|-------|-------|-------|
| 1150 | 324HP | 34.12 | 29.62 | 12.31 |
| 1300 | 326HP | 35.62 | 31.12 | 13.06 |

| NO. | REVISION | BY & DATE | CHK | ANG | FINISH | TOLERANCES UNLESS SPECIFIED | | MARATHON ELECTRIC | DRAWN DRS 11-22-1996 | |
|--|--|----------------|-----|-------|--------|-----------------------------|------------------|---|----------------------|------------|
| | | | | | | DEC. | INCHES | | | |
| 11 | REV'D SHAFT EXT. TO .750/.745 ECO-0040538 | DRO 10-31-2013 | | | | .X | ±.1 | TITLE OUTLINE 320HP FR. - BB - TS - TEFC MAT'L. FINISH | CHK ML 11-27-1996 | |
| 10 | REDRAWN IN AUTOCAD | TAT 07-22-2004 | ML | .X | ±.1 | | | | APPD GK 11-27-1996 | |
| 9 | REVISED TO NEC CONDUIT BOX CN 28428 | BJW 02-04-2000 | | .XX | ±.03 | | | | SCALE 7=32 | |
| 8 | CORRECTED BOLT LOC. ON REAR BRACKET CN 23468 | MJD 09-30-1997 | | .XXX | ±.005 | | | | REF | |
| 7 | REVISED EYEBOLT LOCATION CN 23750 | MRB 02-05-1997 | | .XXXX | ±.0005 | | | | FMF | |
| | | | | | ±7'30" | | | | PREV | |
| | | | | | | | | | | |
| THIS DRAWING IN DESIGN AND DETAIL IS OUR PROPERTY AND MUST NOT BE USED EXCEPT IN CONNECTION WITH OUR WORK ALL RIGHTS OF DESIGN AND INVENTION ARE RESERVED THIS IS AN ELECTRONICALLY GENERATED DOCUMENT - DO NOT SCALE THIS PRINT | | | | | | RFP | CAD FILE ss28363 | SIZE B | DRAWING NO. SS28363 | PAGE OF 11 |
| | | | | | | DIST LB | | | | |

LOW VOLTAGE



HIGH VOLTAGE



VIEW OF TERMINAL END

| | | | | TOLERANCES UNLESS SPECIFIED | |  REGAL - BELOIT CORPORATION | DRAWN PGK 06-04-1997 | | | | | | |
|--|--------------------------------|-------------|-----|-----------------------------|-----|--|----------------------|--------------------------|---------------|-------------|------|----|------|
| NO. | REVISION | BY & DATE | CHK | ANG | ± | | UNIT | CHK | ML 06-05-1997 | | | | |
| E | CORRECTED IEC MARKINGS | ECO-0111208 | WGJ | 01-23-2017 | EMH | DEC. | INCHES | APPD | GK 06-15-1997 | | | | |
| D | RE-DRAWN WITH REGAL LOGO | ECO-0110493 | WGJ | 09-30-2016 | EMH | .X | ±.1 | | | | | | |
| 8 | ADDED IEC DESIGNATIONS | MU95020 | TJW | 4/30/2010 | MJS | .XX | ±.02 | TITLE CONNECTION DIAGRAM | | | | | |
| 7 | REVISED HIGH VOLTAGE L2 WAS L3 | CN52600-354 | MRB | 09-21-1998 | | .XXX | ±.005 | SCALE | | | | | |
| 6 | REDRAWN ON CADD | | PGK | 06-05-1997 | | .XXXX | ±.0005 | REF | | | | | |
| | | | | | | | | FINISH | | | | | |
| | | | | | | | | PREV | | | | | |
| THIS DRAWING IN DESIGN AND DETAIL IS OUR PROPERTY AND MUST NOT BE USED EXCEPT IN CONNECTION WITH OUR WORK ALL RIGHTS OF DESIGN AND INVENTION ARE RESERVED THIS IS AN ELECTRONICALLY GENERATED DOCUMENT - DO NOT SCALE THIS PRINT | | | | | | RFP | CAD FILE EE7308K | | SIZE | DRAWING NO. | PAGE | OF | REV. |
| | | | | | | DIST | | | A | EE7308K | | | E |

