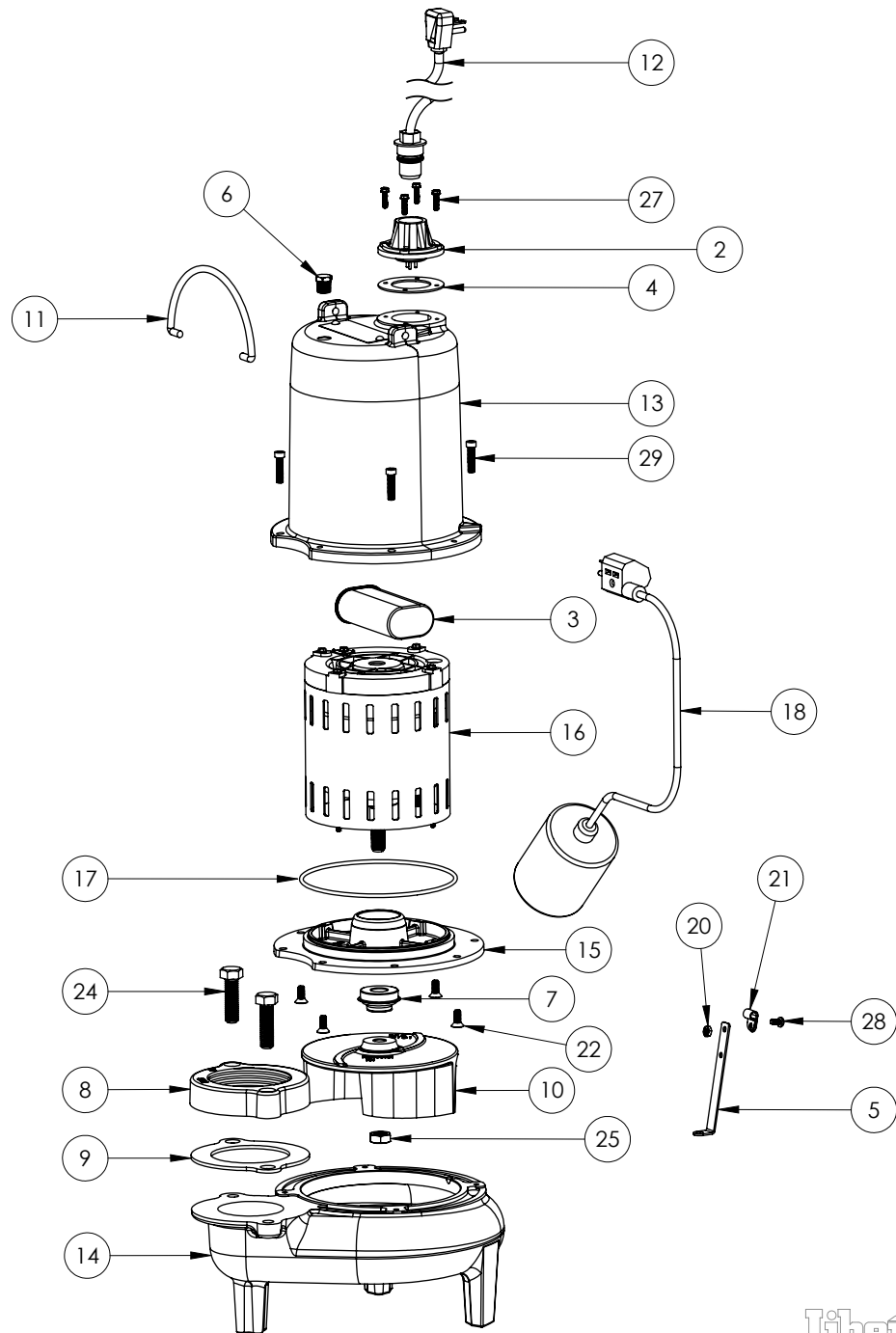


LE102A3 (B62)



## LE102A3

## LE102A3 (B62)

#	PART #	DESCRIPTION	QTY	Note
2	5014000	CORD PLATE	1	
3	51190F0	CAPACITOR	1	
4	5060000	CORD PLATE GASKET	1	
5	5070000	FLOAT SWITCH SUPPORT	1	
6	5071000	BRASS OIL PLUG	1	
7	K001717	KIT, 5/8 UNITIZED 5120000 AND LIP SEAL 5860000	1	
8	K001222	3" DISCHARGE KIT	1	
9	5129000	FLANGE GASKET, FITS 2" OR 3"	1	
10	K001486	5131000 IMPELLER KIT, INCLUDES 1/2" JAM NUT	1	
11	K001095	STAINLESS STEEL HANDLE	1	
12	K001058	POWER CORD, 10FT. 230V	1	
13	531400R	MOTOR COVER	1	[1]
14	531500R	VOLUTE HOUSING	1	
15	53260B0	MOTOR PLATE	1	[1]
16	5332000	MOTOR	1	[1]
17	5617000	O-RING	1	
18	K001019	61140A0 PUMP SWITCH, 10' 230V, INCLUDES MOUNTING HARDWARE	1	
20	8002000	#10-24 STAINLESS STEEL HEX	1	
21	8014000	CABLE CLAMP	1	
22	8018000	1/4-20 x 5/8 SLOTTED FLAT HEAD BOLT		
24	8037000	1/2-13 x 1-3/4 STAINLESS STEEL BOLT	2	
25	8046000	1/2-20 HEX STAINLESS STEEL JAM NUT	1	
27	8064000	#8-32 x 5/8 HEX WASHER HEAD SCREW	4	
28	8082000	#10-24 x 3/8 EPOXY LOCK SCREW	1	
29	8091000	1/4-20 x 1 HEX SOCKET HEAD BOLT	4	

**PART NOTES:**

[1] - Part requires factory authorized service. Contact Liberty Pumps at 1-800-543-2550