

# PRODUCT INFORMATION PACKET

**marathon**<sup>®</sup>  
Motors

Model No: 364TTGS16536  
Catalog No: E573A  
60,1800,EPFC,364T,3/60/230/460  
Explosion Proof



Regal and Marathon are trademarks of Regal Beloit Corporation or one of its affiliated companies.  
©2018 Regal Beloit Corporation, All Rights Reserved. MC017097E

**REGAL**<sup>®</sup>

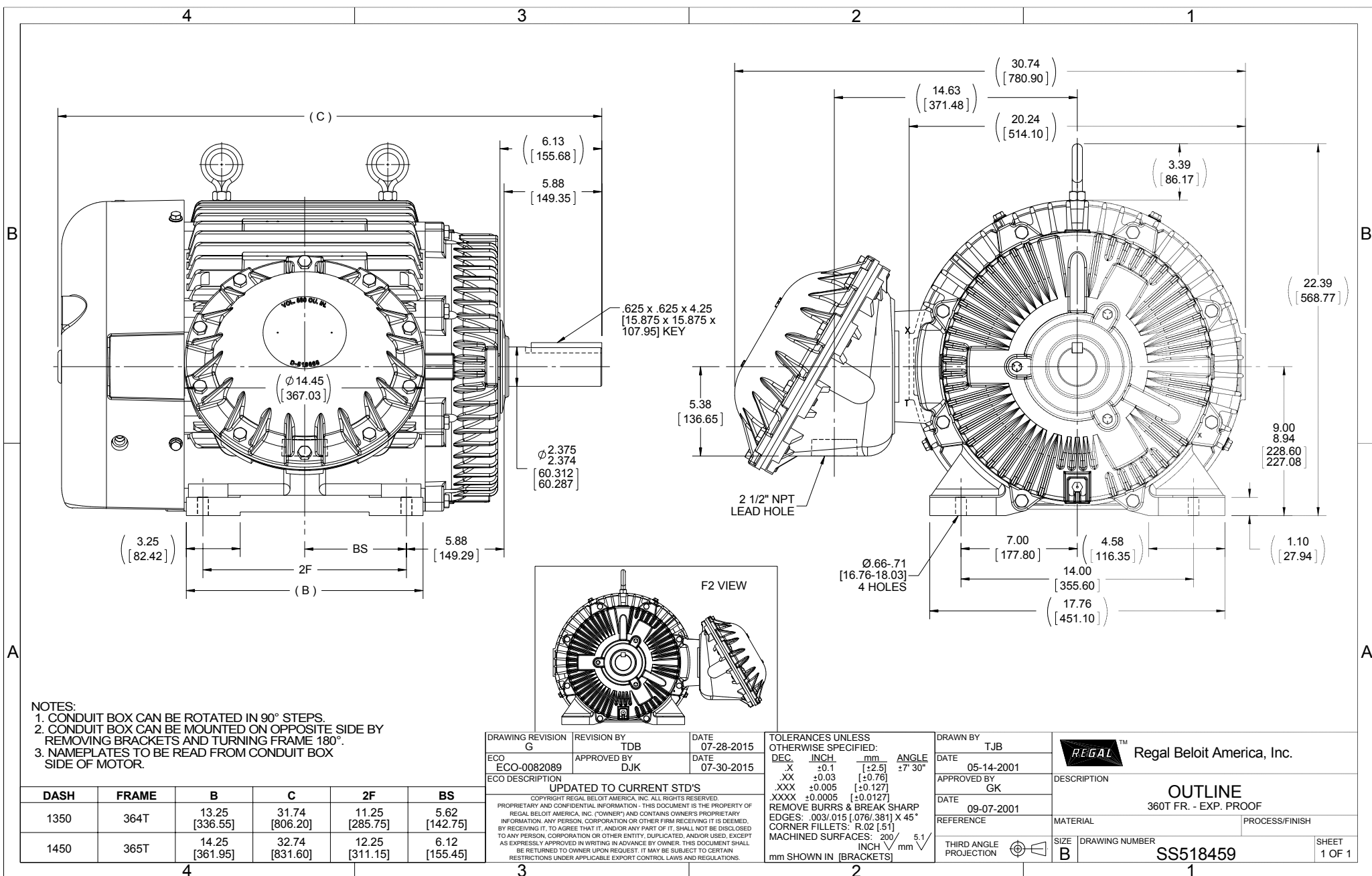


### Nameplate Specifications

Output HP	<b>60 Hp</b>	Output KW	<b>45.0 kW</b>
Frequency	<b>60 Hz</b>	Voltage	<b>230/460 V</b>
Current	<b>138.0/69.0 A</b>	Speed	<b>1780 rpm</b>
Service Factor	<b>1</b>	Phase	<b>3</b>
Efficiency	<b>95 %</b>	Duty	<b>Continuous</b>
Insulation Class	<b>F</b>	Design Code	<b>B</b>
KVA Code	<b>G</b>	Frame	<b>364T</b>
Enclosure	<b>Explosion Proof Fan cooled</b>	Overload Protector	<b>No</b>
Ambient Temperature	<b>40 °C</b>	Drive End Bearing Size	<b>6314</b>
Opp Drive End Bearing Size	<b>6312</b>	UL	<b>No</b>
CSA	<b>N</b>	CE	<b>N</b>
IP Code	<b>54</b>		

### Technical Specifications

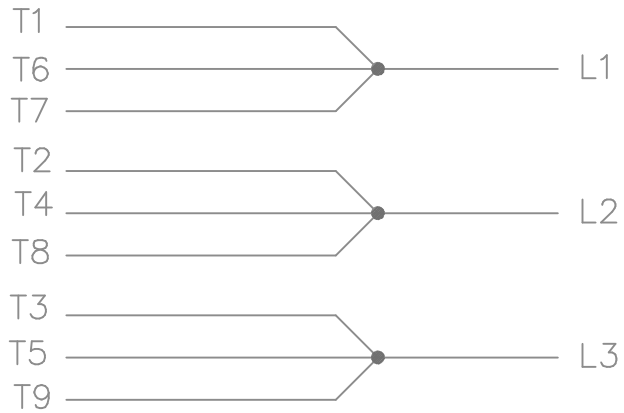
Electrical Type	<b>Squirrel Cage Inverter Rated</b>	Starting Method	<b>Line Or Inverter</b>
Poles	<b>4</b>	Rotation	<b>Reversible</b>
Mounting	<b>Rigid base</b>	Motor Orientation	<b>Horizontal</b>
Drive End Bearing	<b>Ball</b>	Opp Drive End Bearing	<b>Ball</b>
Frame Material	<b>Cast Iron</b>	Shaft Type	<b>T</b>
Overall Length	<b>31.74 in</b>	Frame Length	<b>13.50 in</b>
Shaft Diameter	<b>2.375 in</b>	Shaft Extension	<b>6.13 in</b>
Assembly/Box Mounting	<b>F1 Only</b>		
Outline Drawing	<b>B-SS518459-1350</b>	Connection Diagram	<b>A-EE7308AD</b>



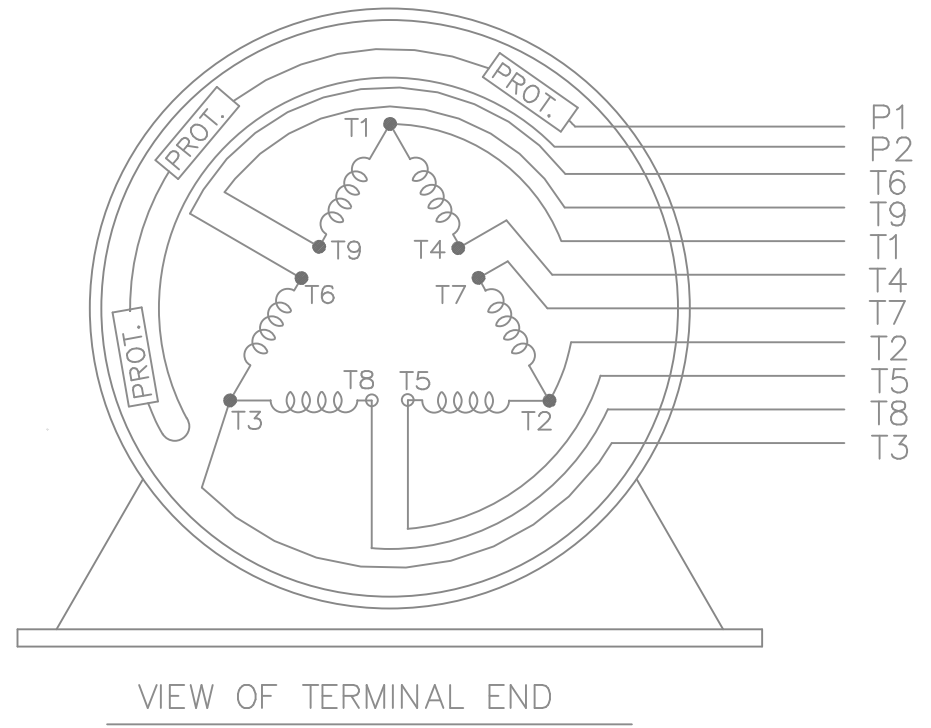
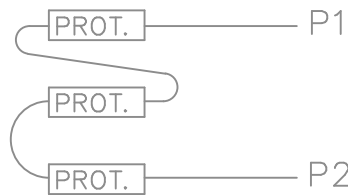
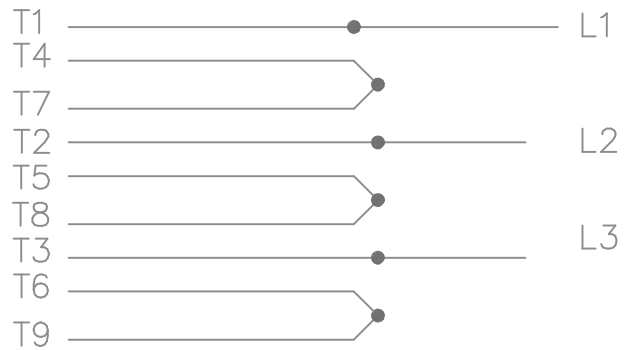
- NOTES:  
 1. CONDUIT BOX CAN BE ROTATED IN 90° STEPS.  
 2. CONDUIT BOX CAN BE MOUNTED ON OPPOSITE SIDE BY REMOVING BRACKETS AND TURNING FRAME 180°.  
 3. NAMEPLATES TO BE READ FROM CONDUIT BOX SIDE OF MOTOR.

DRAWING REVISION G	REVISION BY TDB	DATE 07-28-2015	TOLERANCES UNLESS OTHERWISE SPECIFIED: DEC. INCH mm ANGLE X +0.1 [+2.5] ±7-30° XX ±0.03 [+0.76] .XXX ±0.005 [+0.127] XXXX ±0.0005 [+0.0127]	DRAWN BY TJB
ECO-0082089	APPROVED BY DJK	DATE 07-30-2015	REMOVE BURRS & BREAK SHARP EDGES: .003/.015 [0.076/0.381] X 45° CORNER FILLETS: R.02 [51] MACHINED SURFACES: 200 5.1 INCH/mm	DATE 05-14-2001
ECO DESCRIPTION UPDATED TO CURRENT STD'S COPYRIGHT REGAL BELOIT AMERICA, INC. ALL RIGHTS RESERVED. PROPRIETARY AND CONFIDENTIAL INFORMATION - THIS DOCUMENT IS THE PROPERTY OF REGAL BELOIT AMERICA, INC. (OWNER) AND CONTAINS OWNER'S PROPRIETARY INFORMATION. ANY PERSON, CORPORATION OR OTHER FIRM RECEIVING IT IS DEEMED, BY RECEIVING IT, TO AGREE THAT IT, AND/OR ANY PART OF IT, SHALL NOT BE DISCLOSED TO ANY PERSON, CORPORATION OR OTHER ENTITY, DUPLICATED, AND/OR USED, EXCEPT AS EXPRESSLY APPROVED IN WRITING IN ADVANCE BY OWNER. THIS DOCUMENT SHALL BE RETURNED TO OWNER UPON REQUEST. IT MAY BE SUBJECT TO CERTAIN RESTRICTIONS UNDER APPLICABLE EXPORT CONTROL LAWS AND REGULATIONS.			REGAL™ Regal Beloit America, Inc.	DESCRIPTION OUTLINE 360T FR. - EXP. PROOF
			THIRD ANGLE PROJECTION	DATE 09-07-2001
			SIZE B	REFERENCE
			DRAWING NUMBER SS518459	PROCESS/FINISH
			SHEET 1 OF 1	

LOW VOLTAGE



HIGH VOLTAGE



WHEN MORE THAN ONE PROT. IS USED; PROT. ARE CONNECTED IN SERIES

				TOLERANCES UNLESS SPECIFIED			DRAWN MJD 12-19-1997				
				DEC.	INCHES		CHK ML 01-07-1998				
				.X	±.1	APPD GK 01-07-1998					
				.XX	±.02	SCALE					
8	HIGH VOLT. SCHEMATIC WAS L1, L3 & L3	CN 32724	DRS 06-12-2004	ML	.XXX	±.005	REF				
7	REDRAWN ON CADD		MJD 01-07-1998		.XXXX	±.0005	FMF				
NO.	REVISION	BY & DATE	CHK	ANG	±7'30"	FINISH	PREV				
THIS DRAWING IN DESIGN AND DETAIL IS OUR PROPERTY AND MUST NOT BE USED EXCEPT IN CONNECTION WITH OUR WORK ALL RIGHTS OF DESIGN AND INVENTION ARE RESERVED THIS IS AN ELECTRONICALLY GENERATED DOCUMENT - DO NOT SCALE THIS PRINT				RFP	CAD FILE ee7308ad		SIZE	DRAWING NO.	PAGE	OF	REV.
				DIST	WA-LB		A	EE7308AD			8

**CERTIFICATION DATA SHEET**

**Model#:** 364TTGS16536 AN      **WINDING#:** T3654165 R4 6  
**CONN. DIAGRAM:** A-EE7308AD      **ASSEMBLY:** F1 ONLY  
**OUTLINE:** B-SS518459-1350

**TYPICAL MOTOR PERFORMANCE DATA**

HP	KW	SYNC. RPM	F.L. RPM	FRAME	ENCLOSURE	KVA CODE	DESIGN
60&50	45&37	1800	1780&1480	364T	EPFC	G	B

PH	Hz	VOLTS	FL AMPS	START TYPE	DUTY	INSL	S.F	AMB°C	ELEVATION
3	60/50	230/460#190/380	138/69&139/69.5	LINE OR INVERTER	CONTINUOUS	F3	1.0/1.0	40	3300

FULL LOAD EFF: 95&94.5	3/4 LOAD EFF: 95	1/2 LOAD EFF: 94.5	GTD. EFF	ELEC. TYPE	NO LOAD AMPS
FULL LOAD PF: 86&86	3/4 LOAD PF: 83.5	1/2 LOAD PF: 77	94.5	SQ CAGE INV RATED	44 / 22

F.L. TORQUE	LOCKED ROTOR AMPS	L.R. TORQUE	B.D. TORQUE	F.L. RISE°C
177 LB-FT	870 / 435	325 LB-FT 184	450 LB-FT 254	65

SOUND PRESSURE @ 3 FT.	SOUND POWER	ROTOR WK^2	MAX. WK^2	SAFE STALL TIME	STARTS /HOUR	APPROX. MOTOR WGT
68 dBA	78 dBA	16 LB-FT^2	420 LB-FT^2	25 SEC.	2	925 LBS.

**\*\*\* SUPPLEMENTAL INFORMATION \*\*\***

DE BRACKET TYPE	ODE BRACKET TYPE	MOUNT TYPE	ORIENTATION	SEVERE DUTY	HAZARDOUS LOCATION	DRIP COVER	SCREENS	PAINT
STANDARD	STANDARD	RIGID	HORIZONTAL	PREMIUM SEVERE DUTY	EXP PROOF CL I GR C&D CL II GR F&G T3B	FALSE	NONE	BLUE (EPOXY)

BEARINGS		GREASE	SHAFT TYPE	SPECIAL DE	SPECIAL ODE	SHAFT MATERIAL	FRAME MATERIAL
DE	OPE						
BALL	BALL	POLYREX EM	T	NONE	NONE	1045 HOT ROLLED (C-204)	CAST IRON
6314	6312						

THERMO-PROTECTORS				THERMISTORS	CONTROL	SPACE /n HEATERS
THERMOSTATS	PROTECTORS	WDG RTDs	BRG RTDs			
TSTATS (N/C)	NOT	NONE	NONE	NONE	FALSE	NONE VOLTS

If Inverter equals NONE, contact factory for further information

INVERTER TORQUE: CONSTANT 10:1
INV. HP SPEED RANGE: NONE
ENCODER: NONE
NONE NONE
NONE NONE PPR
BRAKE: NONE NONE
NONE P/N NONE
NONE NONE
NONE FT-LB NONE V NONE Hz

\*  
N  
O  
T  
E  
S  
\*

DATE: 06/21/2017 08:35:15 AM  
 FORM 3531 REV.3 02/07/99

\*\* Subject to change without notice.

Data Sheet

364TGS16536



Submittal  
Data @ 460 V

Date: 6/20/2017

Customer: \_\_\_\_\_  
Attention: \_\_\_\_\_  
Submitted by: FAREEDA DUDEKULA

Motor Load Data

Load	0%	25%	50%	75%	100%	115%	125%	LR
Current (Amps)	22.0	27.0	39.0	53.0	69.0	78.5	86.5	435
Torque (ft-lb)	0.00	44.0	88.0	133	177	204	222	325
RPM	1800	1795	1790	1785	1780	1,775	1772	0
Efficiency (%)		92.4	94.5	95.0	95.0	94.5	94.1	
P.F. (%)	5.0	56.0	77.0	83.5	86.0	86.5	86.0	34.0

Motor Speed Data

	LR	Pull-Up	BD	Rated	Idle
Speed (rpm)	0	900	1715	1780	1800
Current (Amps)	435	375	250	69.0	22.0
Torque (ft-lb)	325	300	450	177	0.00

Information Block

HP	60.0
Sync. RPM	1800
Frame	364
Enclosure	TEFC
Construction	TFS
Voltage	30/460#190/38 V
Frequency	60 Hz
Design	A
LR Code letter	G
Service Factor	1.15
Temp Rise @ FL	65 °C
Duty	CONT
Ambient	40 °C
Elevation	1,000 feet
Rotor/Shaft wk <sup>e</sup>	16.0 Lb-Fe
Rel Wdg	T3654165 R4
Sound Pressure @ 1M	68 dBA
VFD Rating	CONSTANT 2:1
Outline Dwg	B-SS519459-1350
Conn. Diag	A-EET308AD
Additional Specifications:	
0	

EQUIV CKT (OHMS / PHASE)				
R1	R2	X1	X2	Xm
0.0650	0.0470	0.4120	0.4730	11.4470

