

Product information presented here reflects conditions at time of publication. Consult factory regarding discrepancies or inconsistencies.



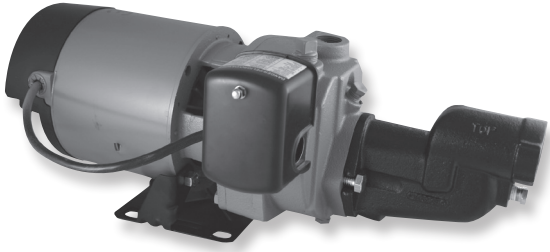
**PUMP COMPANY**

Zoeller Family of Water Solutions™

MAIL TO: P.O. BOX 16347 • Louisville, KY 40256-0347  
 SHIP TO: 3649 Cane Run Road • Louisville, KY 40211-1961  
 (502) 778-2731 • 1 (800) 928-PUMP • FAX (502) 774-3624

visit our web site:  
[www.zoeller.com](http://www.zoeller.com)

## Cast Iron Shallow Well Jet Pumps



- Sturdy cast iron construction
- Includes removable ejector for easy serviceability
- Includes pressure switch
- Thermal overload protects against overheating
- Special priming port and large volume case makes priming easier
- Continuous duty uni-frame 56 frame motor (NEMA J adaptable)
- Capacitor start motors provide maximum starting torque
- Stainless steel motor shaft sleeve for corrosion resistance
- Easy access drain plug for winterizing
- Carbon/ceramic mechanical shaft seal
- 1-year limited warranty

NE460 - 1/2 HP 115/230 V  
 NE461 - 3/4 HP 115/230 V



Model	Suction Lift Ft.	Pressure Switch Setting PSI	Capacities GPM at Discharge Pressure PSIG				Suction & Discharge	Pump Shipping Weight
			20	30	40	50		
460-0006 1/2 HP NE460	5	30-50	11.6	11.0	9.8	7.0	1-1/4" x 3/4"	40
	15		9.0	8.8	8.0	5.6		
	25		5.6	5.6	5.5	4.5		
461-0006 3/4 HP NE461	5	30-50	17.5	17.0	15.0	10.0	1-1/4" x 3/4"	42
	15		13.0	12.9	12.5	8.0		
	25		8.0	7.8	7.5	5.5		

## Reduce Your Stock Keeping Units with Zoeller Mix and Match Tank Fitting Packages

Fittings package ordering information for use with Zoeller jet pumps

10-2367 Compact Air-E-Tainer®



+

Fittings Package 10-2381

+

Zoeller Shallow Well Jet Pump

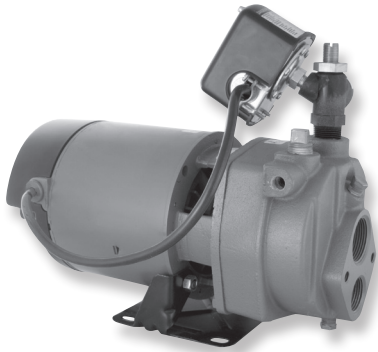


Cottage Air-E-Tainer® System

=



# Cast Iron Convertible Deep Well Jet Pumps with Power Plus 56 Frame Motor



- Sturdy cast iron construction
- Highly serviceable NEMA J or NEMA J adaptable motors
- Includes pressure switch
- Thermal overload protects against overheating
- Ejector purchased separately
- 2-year limited warranty

**NE462 - 1/2 HP 115/230 V**  
**NE463 - 1 HP 115/230 V**

**1-1/4" inlet, 3/4" discharge**  
**1-1/4" inlet, 1" discharge**

**Z Series Convertible Jet Pumps with NEMA J adaptable uni-frame motor**

Pump Model	Ejector Model	Discharge Pressure	Capacities in GPM From Pump To Pumping Water Level In Feet											DW Minimum Operating Pressure PSI			
			SW Ejector Attached To Pump			Deep Well Ejector In 4" ID Well											
			5	15	25	20	30	40	50	60	70	80	90		100	110	
462-0006 1/2 HP NE462	10-2353	20	11.3	8.7	5.3											--	
		40	9.5	7.8	5.2											20	
	10-2355	20	10.2	8.0	4.8	11.7	8.3	7.0									20
40		9.7	7.3	4.5	6.0	4.7	3.8									30	
10-2356	20						6.7	6.0	5.3	4.3	3.3	2.5				30	
	40						4.3	3.8	3.3	2.5	1.7	0.8				30	
463-0006 1 HP NE463	10-2357	30	15.7	12.3	8.3	16.7	14.2	12.2	8.3							35-37	
		50	15.0	12.2	8.0	12.5	8.3	5.0	2.5							35-37	
	10-2355	30	10.0	7.5	4.7	11.7	11.7	11.5	10.3	9.0	7.7	6.2	4.8				37-39
		50	9.5	7.3	4.3	9.2	9.2	8.2	7.0	5.7	4.3	3.2	1.7				37-39
	10-2358	30										5.0	4.8	4.3	3.7		39
		50										3.7	3.3	3.0	2.7		39
	10-2354	20	17.2	12.8	7.7												--
		40	14.8	12.2	7.2												--

NOTE: See installation instructions for setting flow control for maximum pressures.

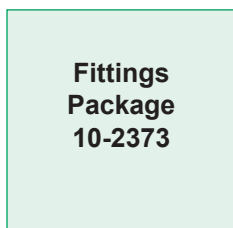
## Reduce Your Stock Keeping Units with Zoeller Mix and Match Tank Fitting Packages

Fittings package ordering information for use with Zoeller jet pumps

10-2368 or 10-2369  
Vertical Bottom Connect  
Air-E-Tainer®



+



+

Zoeller Convertible Jet Pump



=

Top Mounted Vertical  
Air-E-Tainer® Systems  
Bottom Connect

