

PRODUCT INFORMATION PACKET

Model No: 404TTGS6588
Catalog No: E574
60,1200,EPFC,404T,3/60/230/460
Explosion Proof



Regal and Marathon are trademarks of Regal Beloit Corporation or one of its affiliated companies.
©2018 Regal Beloit Corporation, All Rights Reserved. MC017097E



Nameplate Specifications

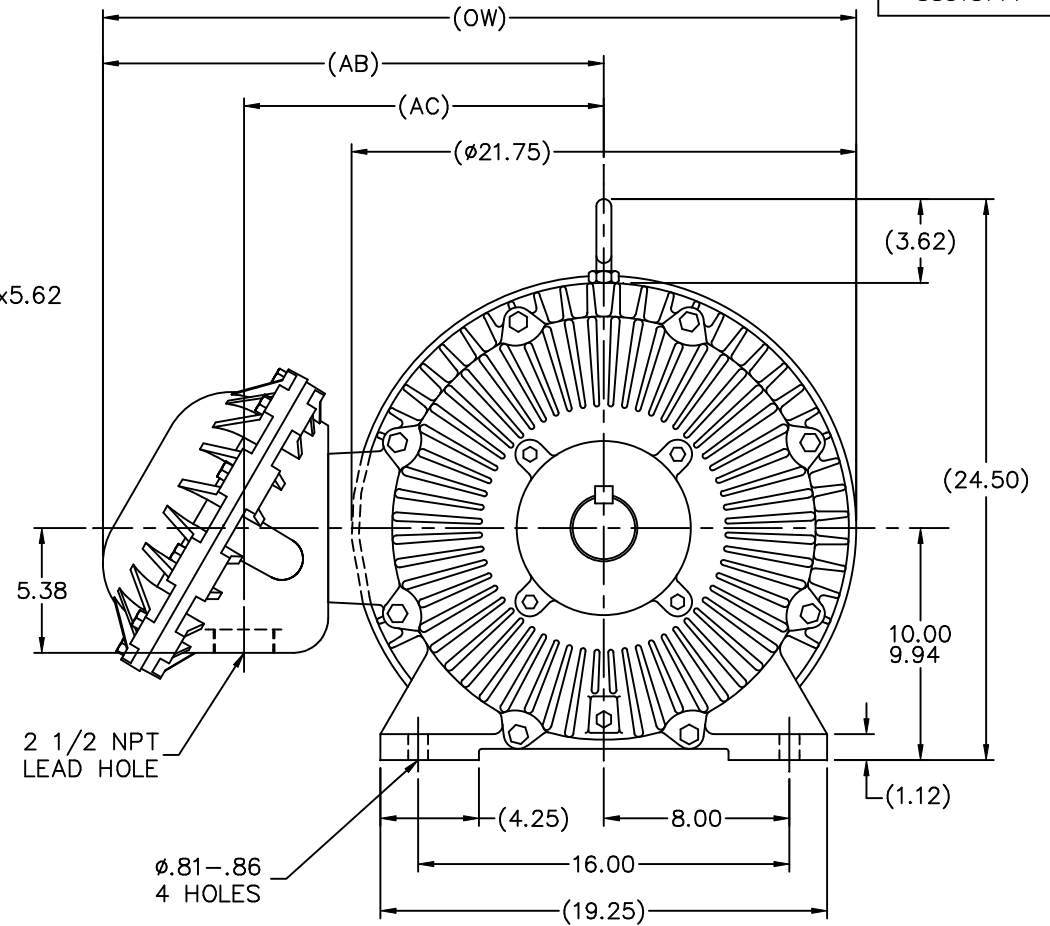
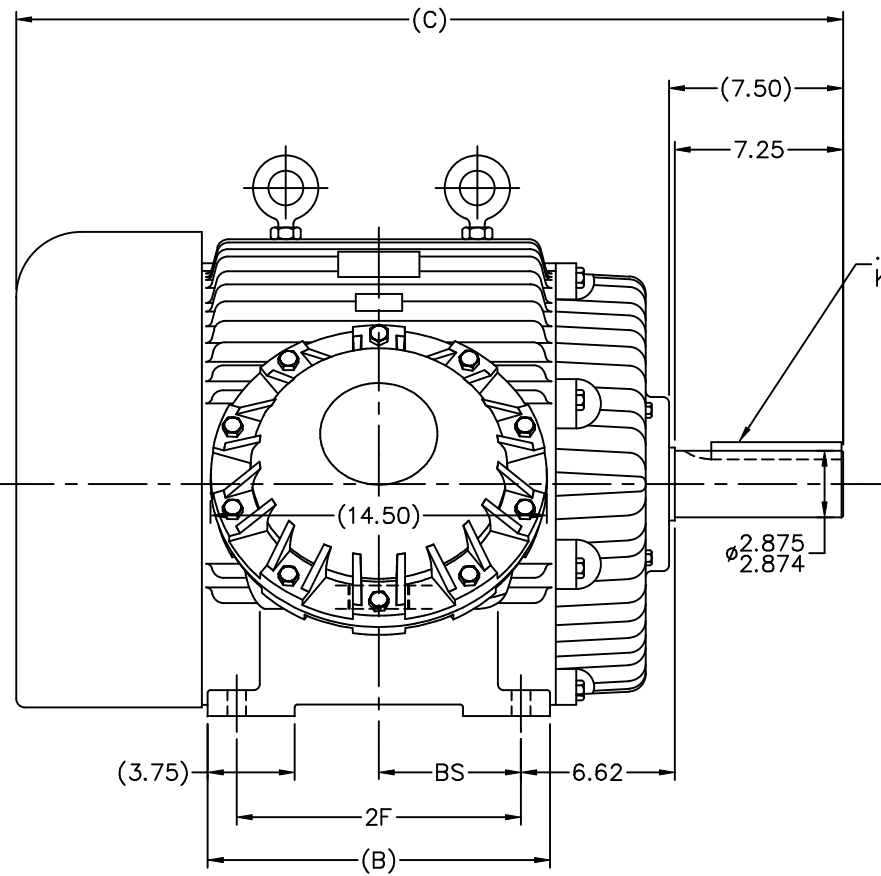
Output HP	60 Hp	Output KW	45.0 kW
Frequency	60 Hz	Voltage	230/460 V
Current	144.0/72.0 A	Speed	1185 rpm
Service Factor	1.15	Phase	3
Efficiency	94.5 %	Duty	Continuous
Insulation Class	F	Design Code	B
KVA Code	G	Frame	404T
Enclosure	Explosion Proof Fan cooled	Overload Protector	No
Ambient Temperature	40 °C	Drive End Bearing Size	6316
Opp Drive End Bearing Size	6313	UL	No
CSA	N	CE	N
IP Code	54		

Technical Specifications

Electrical Type	Squirrel Cage Inverter Rated	Starting Method	Line Or Inverter
Poles	6	Rotation	Reversible
Mounting	Rigid base	Motor Orientation	Horizontal
Drive End Bearing	Ball	Opp Drive End Bearing	Ball
Frame Material	Cast Iron	Shaft Type	T
Overall Length	35.62 in	Frame Length	15.25 in
Shaft Diameter	2.875 in	Shaft Extension	7.5 in
Assembly/Box Mounting	F1 Only		
Outline Drawing	B-SS518777-1525	Connection Diagram	A-EE7308AD

This is an uncontrolled document once printed or downloaded and is subject to change without notice. Date Created: 07/02/2018

SS518777



.75x.75x5.62
KEY

ø2.875
2.874

5.38

2 1/2 NPT
LEAD HOLE

ø.81-.86
4 HOLES

NOTES:

1. BOX CAN BE ROTATED IN 90° STEPS
2. BOX CAN BE MOUNTED ON OPPOSITE SIDE BY REMOVING BRACKETS AND TURNING FRAME 180°
3. NAMEPLATES TO BE READ FROM CONDUIT BOX SIDE OF MOTOR

DASH	FRAME	B	C	2F	AB	AC	BS	OW
1525	404T	14.75	35.62	12.25	21.50	15.50	6.12	32.38
1675	405T	16.25	37.12	13.75	22.50	16.50	6.88	33.38

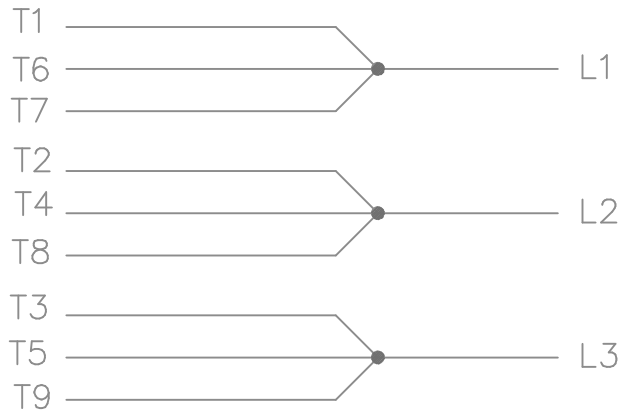
		TOLERANCES UNLESS SPECIFIED		MARATHON ELECTRIC		DRAWN DRS 12-17-2001		
		DEC.	INCHES			CHK	JHL 013-19-2002	
		.X	±.1			APPD	JES 03-20-2002	
2	REDRAWN IN AUTOCAD	TAT	06-29-2004	ML	.XXX ±.005	TITLE	OUTLINE	
1	NEW DRAWING	CN	34593	DRS	03-20-2002	400T FR. - EXP.PR. - STD.	SCALE	3-16
NO.	REVISION	BY	& DATE	CHK	ANG ±730°	MATL	REF	
THIS DRAWING IN DESIGN AND DETAIL IS OUR PROPERTY AND MUST NOT BE USED EXCEPT IN CONNECTION WITH OUR WORK ALL RIGHTS OF DESIGN AND INVENTION ARE RESERVED THIS IS AN ELECTRONICALLY GENERATED DOCUMENT - DO NOT SCALE THIS PRINT				RFP		FINISH	FMF	
				DIST	WA	CAD FILE	ss518777	
				SIZE	B	DRAWING NO.	SS518777	
				PAGE		OF	2	
				REV.				

```
ERROR: syntaxerror  
OFFENDING COMMAND: --nostringval--
```

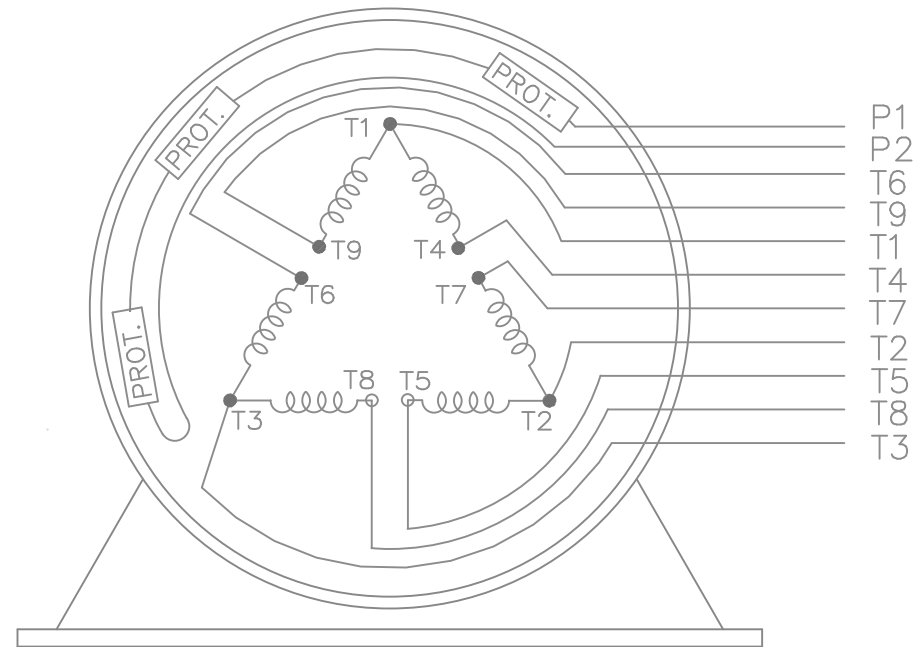
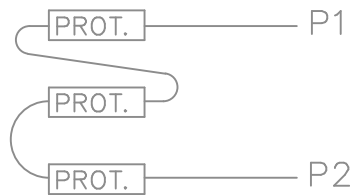
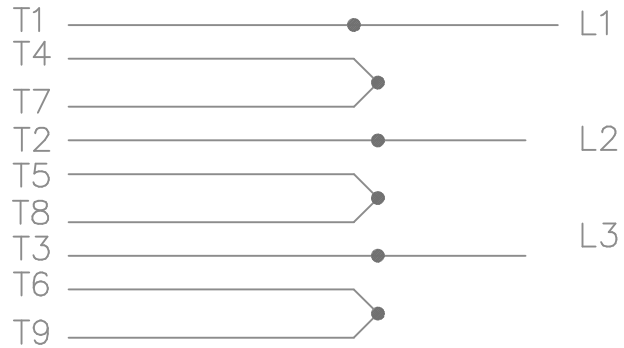
```
STACK:
```

```
-dictionary-  
-dictionary-  
/Pscript_WinNT_Compact  
-dictionary-
```

LOW VOLTAGE



HIGH VOLTAGE



VIEW OF TERMINAL END

WHEN MORE THAN ONE PROT. IS USED; PROT. ARE CONNECTED IN SERIES

				TOLERANCES UNLESS SPECIFIED			DRAWN MJD 12-19-1997					
				DEC.	INCHES		CHK ML 01-07-1998					
				.X	±.1	APPD GK 01-07-1998						
				.XX	±.02	SCALE						
8	HIGH VOLT. SCHEMATIC WAS L1, L3 & L3	CN 32724	DRS 06-12-2004	ML	.XXX	±.005	REF					
7	REDRAWN ON CADD		MJD 01-07-1998		.XXXX	±.0005	FMF					
NO.	REVISION	BY & DATE	CHK	ANG	±7'30"	PREV						
THIS DRAWING IN DESIGN AND DETAIL IS OUR PROPERTY AND MUST NOT BE USED EXCEPT IN CONNECTION WITH OUR WORK ALL RIGHTS OF DESIGN AND INVENTION ARE RESERVED THIS IS AN ELECTRONICALLY GENERATED DOCUMENT - DO NOT SCALE THIS PRINT				RFP	CAD FILE ee7308ad			SIZE	DRAWING NO.	PAGE	OF	REV.
				DIST	WA-LB			A	EE7308AD			8

