

# PRODUCT INFORMATION PACKET

Model No: 5KC49MN6379  
Catalog No: C1818  
1/4,1200,EPFC,56CZ,1/60/115  
Explosion Proof



Regal and Marathon are trademarks of Regal Beloit Corporation or one of its affiliated companies.  
©2018 Regal Beloit Corporation, All Rights Reserved. MC017097E

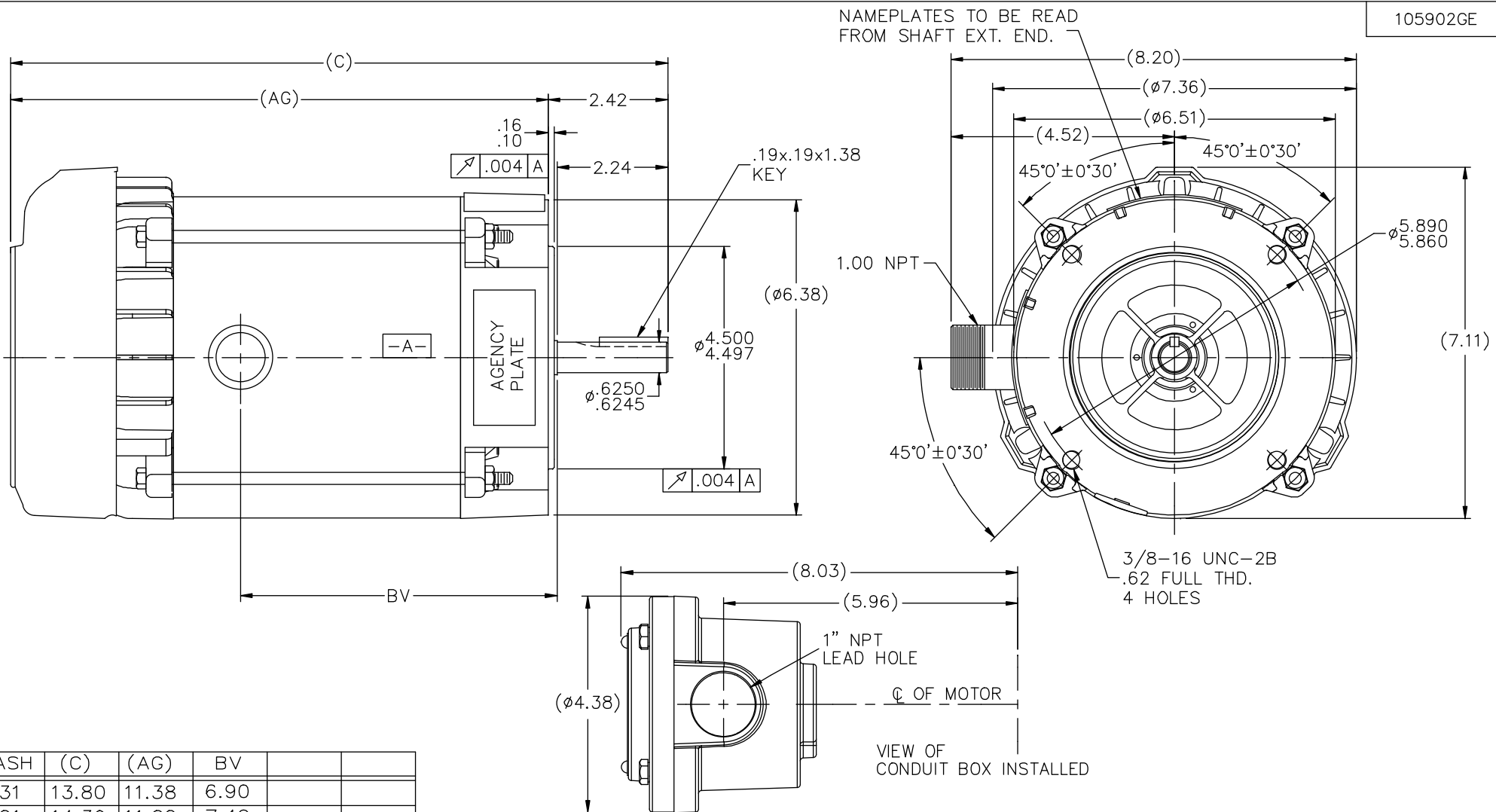
**Nameplate Specifications**

Output HP	<b>0.25 Hp</b>	Output KW	<b>0.19 kW</b>
Frequency	<b>60 Hz</b>	Voltage	<b>115 V</b>
Current	<b>5.6 A</b>	Speed	<b>1140 rpm</b>
Service Factor	<b>1</b>	Phase	<b>1</b>
Efficiency	<b>55 %</b>	Duty	<b>Continuous</b>
Insulation Class	<b>B</b>	Design Code	<b>NO DESIGN CODE</b>
KVA Code	<b>K</b>	Frame	<b>56CZ</b>
Enclosure	<b>Explosion Proof Fan cooled</b>	Overload Protector	<b>Automatic</b>
Ambient Temperature	<b>40 °C</b>	Drive End Bearing Size	<b>6203</b>
Opp Drive End Bearing Size	<b>6203</b>	UL	<b>Recognized</b>
CSA	<b>N</b>	CE	<b>N</b>
IP Code	<b>54</b>		

**Technical Specifications**

Electrical Type	<b>Capacitor Start Induction Run</b>	Starting Method	<b>Across The Line</b>
Poles	<b>6</b>	Rotation	<b>Selective Counterclockwise</b>
Mounting	<b>Round</b>	Motor Orientation	<b>Horizontal</b>
Drive End Bearing	<b>Ball</b>	Opp Drive End Bearing	<b>Ball</b>
Frame Material	<b>Rolled Steel</b>	Shaft Type	<b>T</b>
Overall Length	<b>14.30 in</b>	Frame Length	<b>6.81 in</b>
Shaft Diameter	<b>0.625 in</b>	Shaft Extension	<b>2.42 in</b>
Assembly/Box Mounting	<b>F1 Only</b>		
Outline Drawing	<b>B-105902GE-681</b>	Connection Diagram	<b>A-102005-110-GE</b>

**This is an uncontrolled document once printed or downloaded and is subject to change without notice. Date Created: 10/08/2018**



DASH	(C)	(AG)	BV		
631	13.80	11.38	6.90		
681	14.30	11.88	7.40		
731	14.80	12.38	7.90		
781	15.30	12.88	8.40		
831	15.80	13.38	8.90		
881	16.30	13.88	9.40		
931	16.80	14.38	9.90		
981	17.30	14.88	10.40		

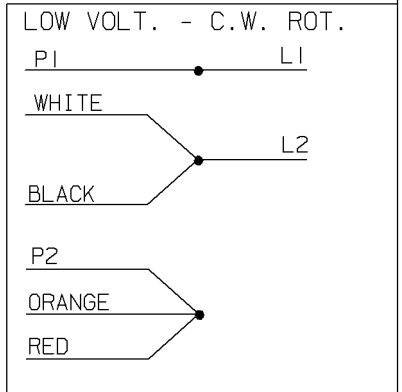
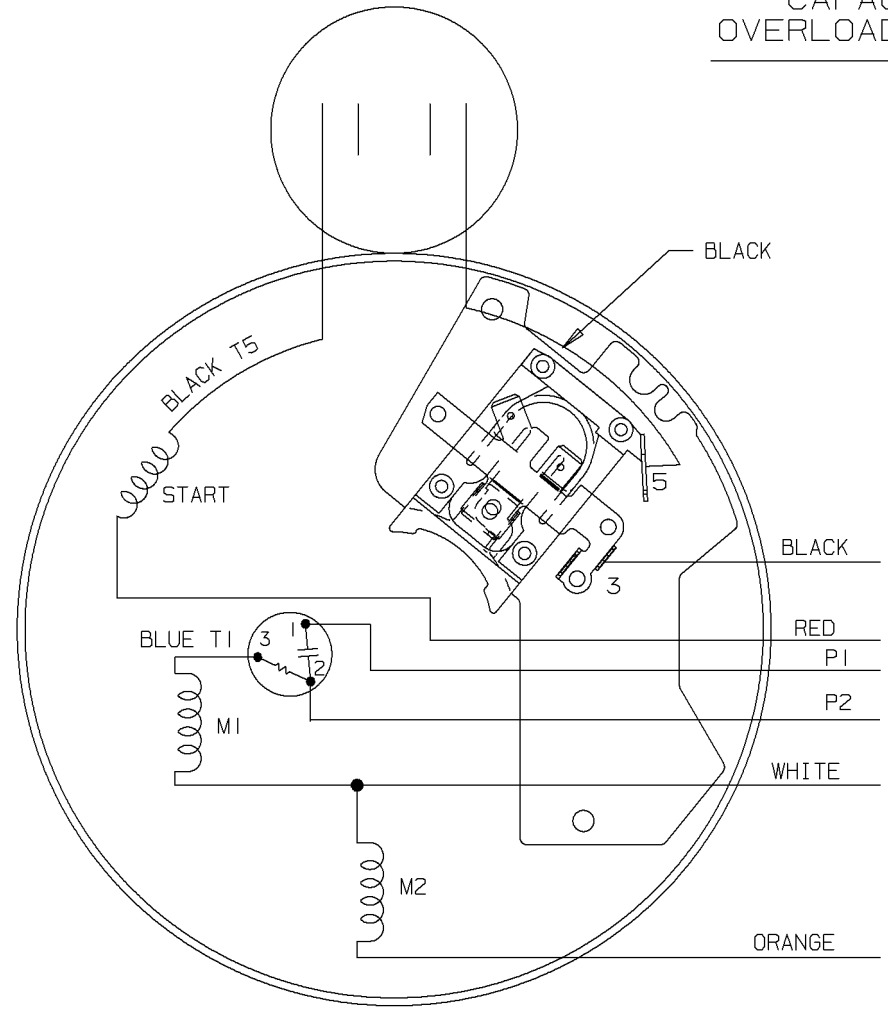
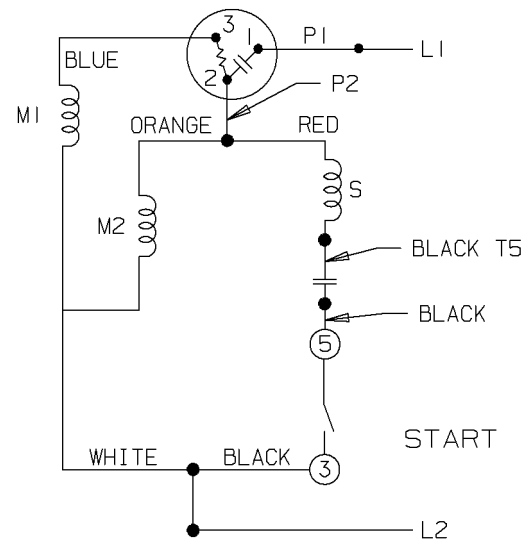
NO.	REVISION	BY & DATE	CHK	ANG	TOLERANCES UNLESS SPECIFIED		MATERIAL	FINISH	DRAWING NO.	PAGE OF	REV.
					DEC.	INCHES					
5	COND. BOX INSTALLED VIEW UPDATED PER ECR-0044571	UD 10/17/13	ST						DRAWN	MKLEIST	12-10-04
4	REVISED C'BOX PER CN 40784A	JJB 02/26/2007	ML	.X	±.1				CHK	ML	01-12-05
3	CHANGED LOGO TO REGAL BELOIT	TAT		.XX	±.03				APPD	DRN	01-03-05
2	REDUCED SHAFT EXTENSION BY .08"	MJK 01/07/2005		.XXX	±.005				REF		
1	ADD GE TO PART NO.	MJK 12/20/2004		.XXXX	±.0005				FMF		
THIS DRAWING IN DESIGN AND DETAIL IS OUR PROPERTY AND MUST NOT BE USED EXCEPT IN CONNECTION WITH OUR WORK ALL RIGHTS OF DESIGN AND INVENTION ARE RESERVED THIS IS AN ELECTRONICALLY GENERATED DOCUMENT - DO NOT SCALE THIS PRINT					RFP	CAD FILE	105902ge	SIZE	B	DRAWING NO.	105902GE
					DIST	WP					5



TITLE OUTLINE - 'C' FACE  
56 FR. - EXP. PR. - SPL EXTENSION

SINGLE VOLTAGE  
CAPACITOR START  
OVERLOAD SELECT ROT.

LOW VOLTAGE - C.W.



FOR C.C.W. ROTATION  
EITHER VOLTAGE  
INTERCHANGE RED  
WITH BLACK LEAD

				✓ MAX. SURFACE ROUGHNESS UNLESS NOTED OTHERWISE		UNLESS OTHERWISE SPECIFIED DIMENSIONS ARE IN INCHES TOL. ON XX±    XXX±.005    XXXX±.0005    ANGLES±				
2	06-14-2001	ROTATION CW WAS CCW	CCW WAS CW	HLB	MATL SPEC			DRAWN BY	MRB	04-09-1999
			CN 31595		FINISH			CHKD BY	ML	04-12-1999
1	04-19-1999	NEW DRAWING		MRB	REFERENCE DRW.	WAUSAU, WISCONSIN 54401		APPD BY	ET	04-15-1999
REV	DATE	CHANGE			NAME	PART NAME CONNECTION DIAGRAM				DRWG NO A-102005-110

SHOP BOOK    PURCHASED    DISTRIBUTION - WA - LB - WP - LM - BR    CADD FILE NO.    102005-110



