

PRODUCT INFORMATION PACKET

Model No: 5KH35JN26X
Catalog No: H167
1/3,1725,DP,48Z,1/60/230
Fan and Blower



Regal and Marathon are trademarks of Regal Beloit Corporation or one of its affiliated companies.
©2018 Regal Beloit Corporation, All Rights Reserved. MC017097E

Product Information Packet: Model No: 5KH35JN26X, Catalog No:H167 1/3,1725,DP,48Z,1/60/230

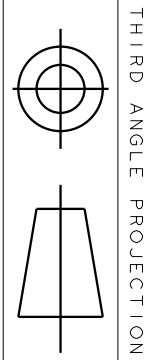
Nameplate Specifications

| | | | |
|------------------------|-------------------|----------------------------|-------------------|
| Output HP | 1/3 Hp | Output KW | 0.25 kW |
| Frequency | 60 Hz | Voltage | 230 V |
| Current | 3.3 A | Speed | 1725 rpm |
| Service Factor | 1.35 | Phase | 1 |
| Efficiency | 56.5 % | Duty | Continuous |
| Insulation Class | B | KVA Code | N |
| Frame | 48Z | Enclosure | Drip Proof |
| Overload Protector | AUTO | Ambient Temperature | 40 °C |
| Drive End Bearing Size | 6203 | Opp Drive End Bearing Size | 6203 |
| UL | Recognized | CSA | Yes |
| CE | N | | |

Technical Specifications

| | | | |
|-------------------|-----------------------|-----------------------|-----------------------------------|
| Electrical Type | Split Phase | Starting Method | SM |
| Poles | 4 | Rotation | Counterclockwise/Clockwise |
| Mounting | Resilient Base | Motor Orientation | ANY |
| Drive End Bearing | BALL | Opp Drive End Bearing | BALL |
| Frame Material | Rolled Steel | Overall Length | 9.95 in |
| Frame Length | 5.79 in | Shaft Diameter | 0.5 in |
| Shaft Extension | 1.8 in | Thru-bolts Extension | 0 |
| Outline Drawing | 52A101908P3 | Connection Diagram | 52A105379AA |

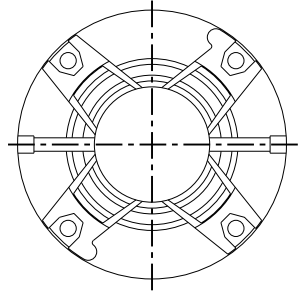
This is an uncontrolled document once printed or downloaded and is subject to change without notice. Date Created: 10/08/2018



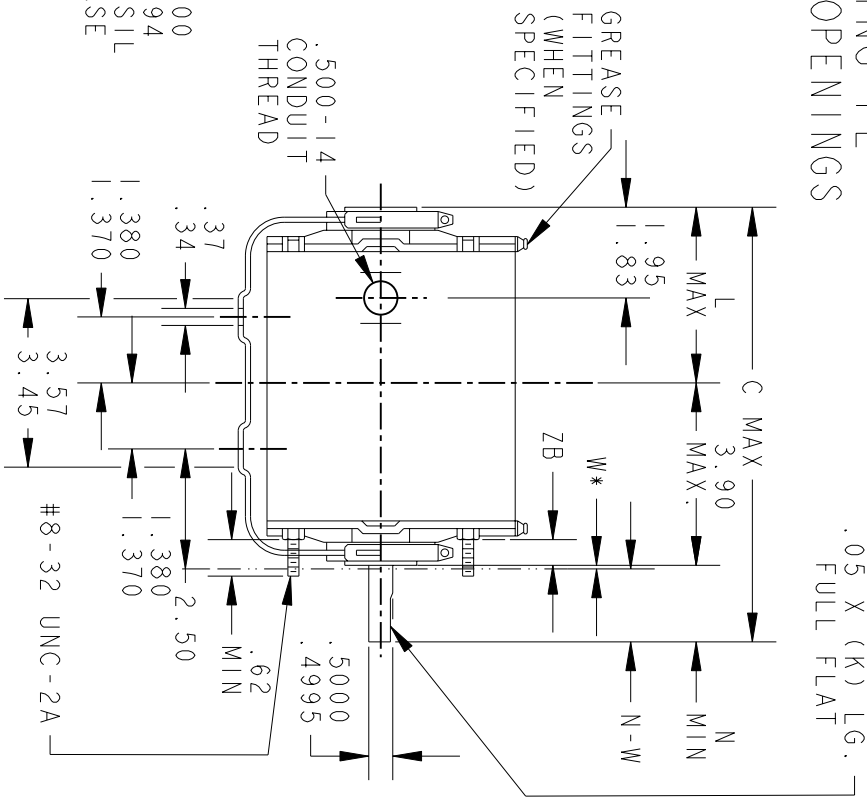
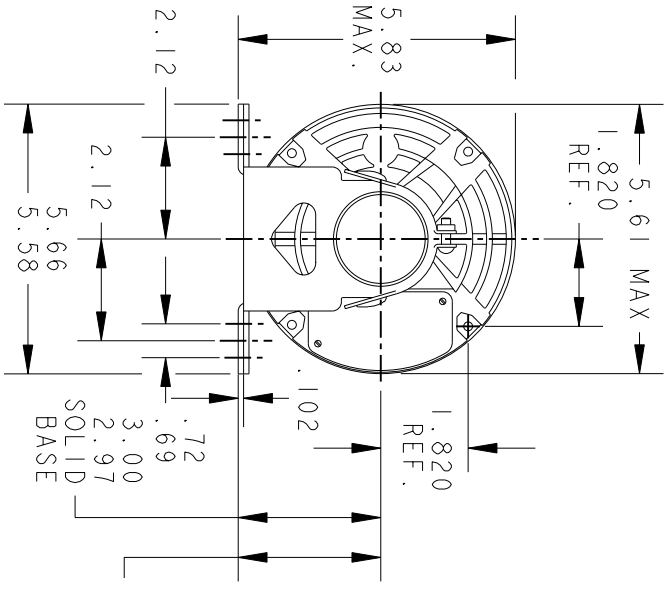
THIRD ANGLE PROJECTION

REVISIONS

| REV. | DESCRIPTION | DATE | APPROVED |
|------|----------------------------------|----------|----------|
| 8 | CHG TO RBC FORMAT PER IS 05-1777 | 12/15/05 | RAJKUMAR |



VIEW SHOWING PE VENTILATION OPENINGS



*W IS A CLEARANCE DUE TO VARIATION IN PARTS & ASSEMBLY.

| PT | TYPE | GE SIZE | NEMA FR | C | K | L | N | N-W | ZB |
|----|------|---------|---------|-------|------|------|------|-----------|---------|
| 6 | KH | 37 | 48Z | 10.78 | 1.54 | 5.05 | 1.88 | 2.01/1.79 | .55/.52 |
| 5 | KH | 36 | 48Z | 10.38 | 1.54 | 4.65 | 1.88 | 2.01/1.79 | .55/.52 |
| 4 | KH | 33 | 48Z | 9.94 | 1.91 | 3.84 | 2.25 | 2.38/2.16 | .55/.52 |
| 3 | KH | 35 | 48Z | 9.95 | 1.54 | 4.22 | 1.88 | 2.01/1.79 | .55/.52 |
| 2 | KH | 33 | 48Z | 9.57 | 1.54 | 3.84 | 1.88 | 2.01/1.79 | .55/.52 |
| 1 | KH | 32 | 48Z | 9.32 | 1.54 | 3.59 | 1.88 | 2.01/1.79 | .55/.52 |

| SIGNATURES | | DATE |
|-------------------------------|------------------------|----------|
| MODEL | | |
| DETAIL | JPK | 01/15/16 |
| CHECKED | | |
| ENGRG | | |
| MFG | | |
| QUALITY | | |
| ISSUED | MDP | 07/10/16 |
| FOR ADDITIONAL INFO REFER TO: | | |
| APPLIED PRACTICES | | |
| DIMENSIONS ARE IN INCHES | | |
| MATERIAL | SOLID MODEL: 52A101908 | |

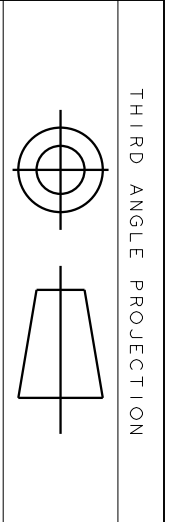


REGAL-BELOTT CORPORATION

TITLE OUTLINE

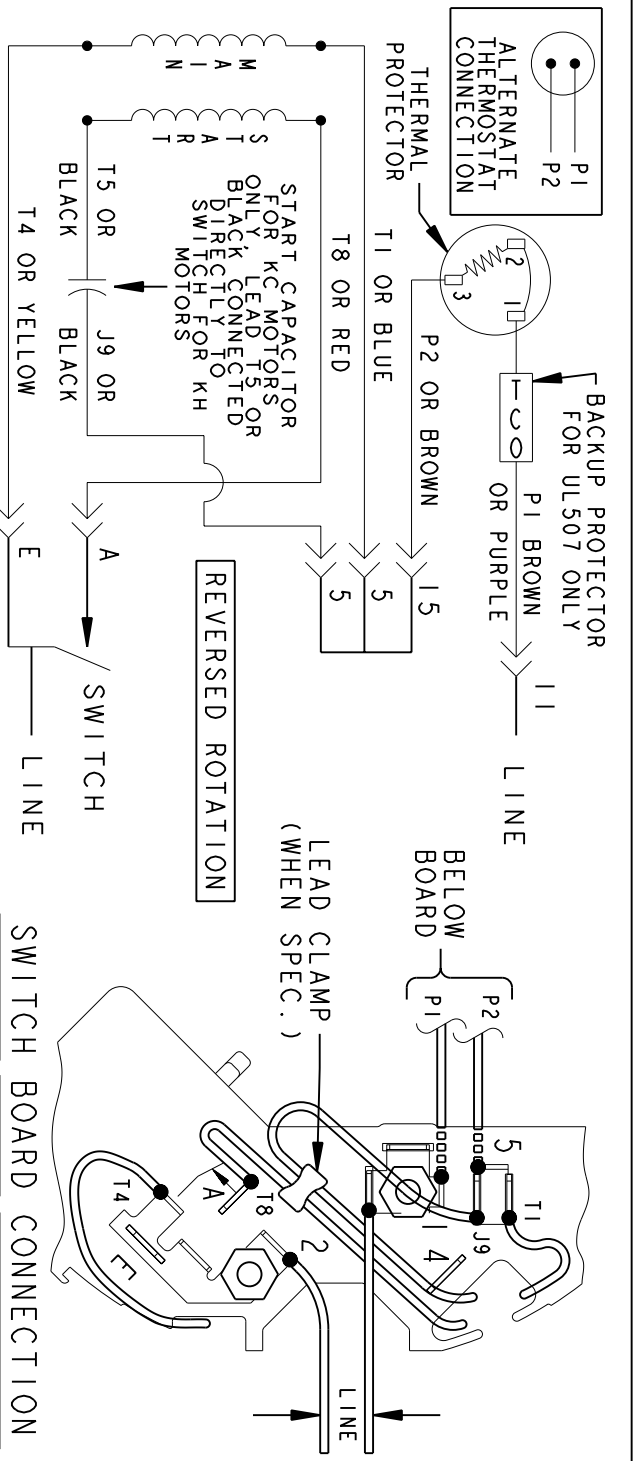
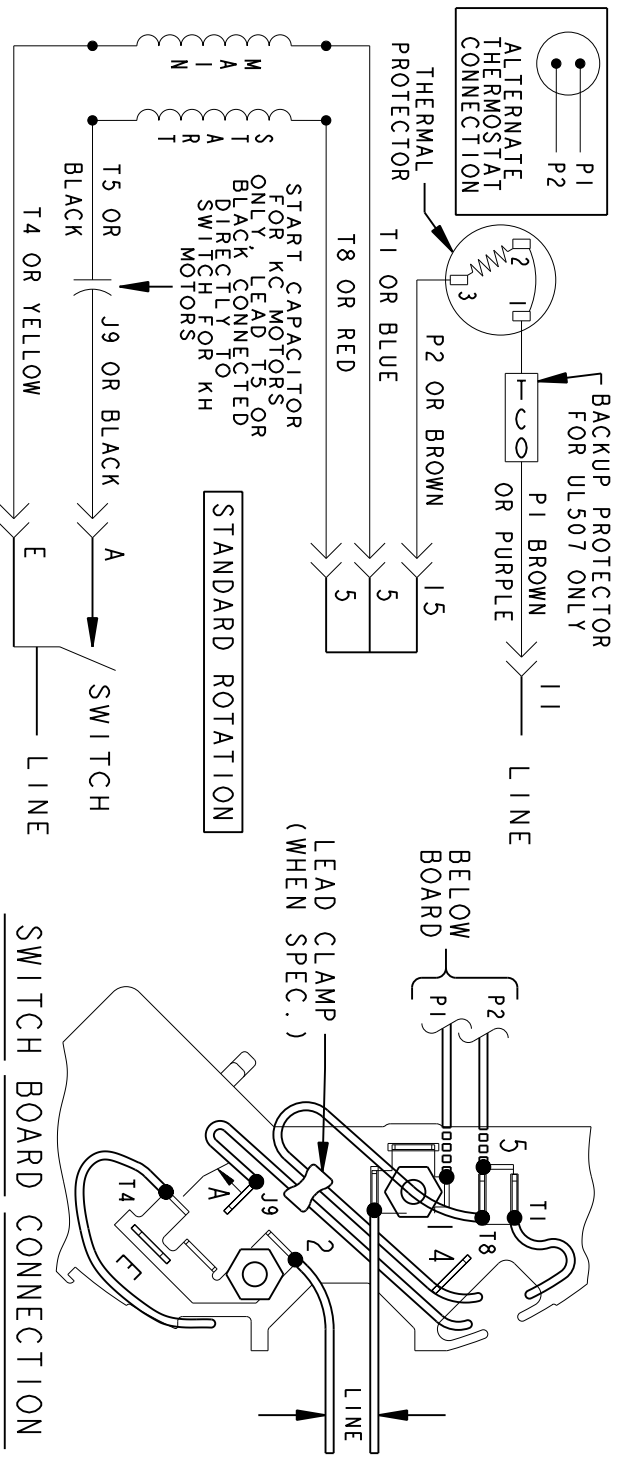
FORM N- GENERAL PURPOSE MOTOR- DRIP PROOF- SOLID OR RESIL BASE- BALL OR SLEEVE BEARING

| | | |
|-----------------|-----------|--------------|
| SCALE: 0.250 | REF. No.: | |
| SIZE: DRAWING A | | |
| 52A101908 | REV 8 | SHEET 1 of 1 |



| REV. | DESCRIPTION | DATE | APPROVED |
|------|----------------|----------|----------|
| 6 | UPDATED FORMAT | 12/01/05 | MAM |

EITHER ROTATION-SINGLE VOLTAGE-TYPE KC OR KH-WITH THERMAL PROTECTOR



NOTE #1 - TO REVERSE ROTATION INTERCHANGE RED (T8) AND BLACK (J9-KC OR T5-KH) LEADS.
 NOTE #2 - WHEN MORE THAN ONE CAPACITOR IS USED CONNECT IN PARALLEL.

SWITCH (C) - 115D958AB REF. DIAG. - 121A851 CONN. LABEL - 52X332048

| SIGNATURES | DATE |
|--------------------------|-----------------|
| MODEL M.D. PAPE | 06/29/87 |
| DETAIL | |
| CHECKED | |
| ENGRG | |
| MFG | |
| QUALITY | |
| ISSUED | M.D.P. 03/08/00 |
| SOLID MODEL: 52A105379AA | |

REGAL-BELOIT CORPORATION

REGAL-BELOIT

CONNECTION DIAGRAM

FMF - 30 FR SWITCH REDESIGN

SCALE: 1.000 REF. No.:

52A105379AA

REV 6