

PRODUCT INFORMATION PACKET

Model No: 5KH37PN33X
Catalog No: H172
1/4-1/12,1725/1140,DP,48Z,1/60/115
Fan and Blower



Regal and Marathon are trademarks of Regal Beloit Corporation or one of its affiliated companies.

©2018 Regal Beloit Corporation, All Rights Reserved. MC017097E



Nameplate Specifications

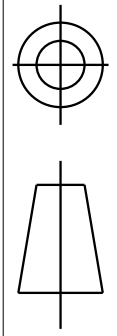
| | | | |
|----------------------------|--------------------|------------------------|----------------------|
| Output HP | 1/4-1/12 Hp | Output KW | 0.19 kW |
| Frequency | 60 Hz | Voltage | 115 V |
| Current | 4.2,2.7 A | Speed | 1725/1140 rpm |
| Service Factor | 1.35 | Phase | 1 |
| Efficiency | 58 % | Duty | Continuous |
| Insulation Class | B | Design Code | - |
| KVA Code | M | Frame | 48Z |
| Enclosure | Drip Proof | Overload Protector | AUTO |
| Ambient Temperature | 40 °C | Drive End Bearing Size | 6203 |
| Opp Drive End Bearing Size | 6203 | UL | Recognized |
| CSA | Yes | CE | N |

Technical Specifications

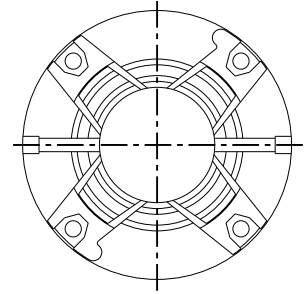
| | | | |
|-------------------|-----------------------|-----------------------|-----------------------------------|
| Electrical Type | Split Phase | Starting Method | SM |
| Poles | 4 | Rotation | Clockwise/Counterclockwise |
| Mounting | Resilient Base | Motor Orientation | ANY |
| Drive End Bearing | BALL | Opp Drive End Bearing | BALL |
| Frame Material | Rolled Steel | Overall Length | 10.69 in |
| Frame Length | 6.62 in | Shaft Diameter | 0.5 in |
| Shaft Extension | 1.88 in | Thru-bolts Extension | 0 |
| Outline Drawing | 52A102396P1 | Connection Diagram | 52A105385AA |

This is an uncontrolled document once printed or downloaded and is subject to change without notice. Date Created: 10/08/2018

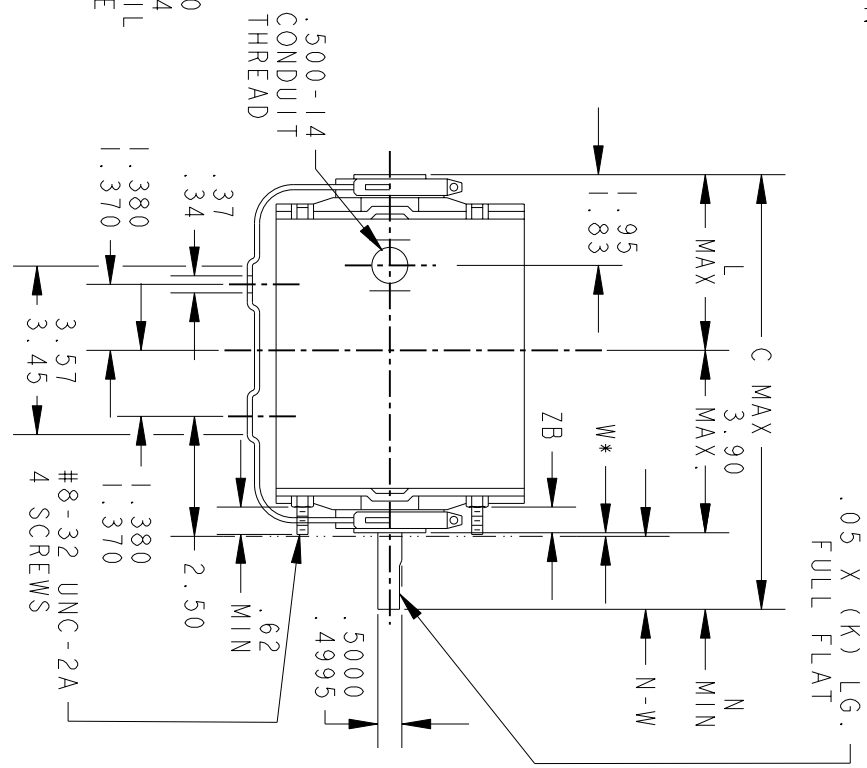
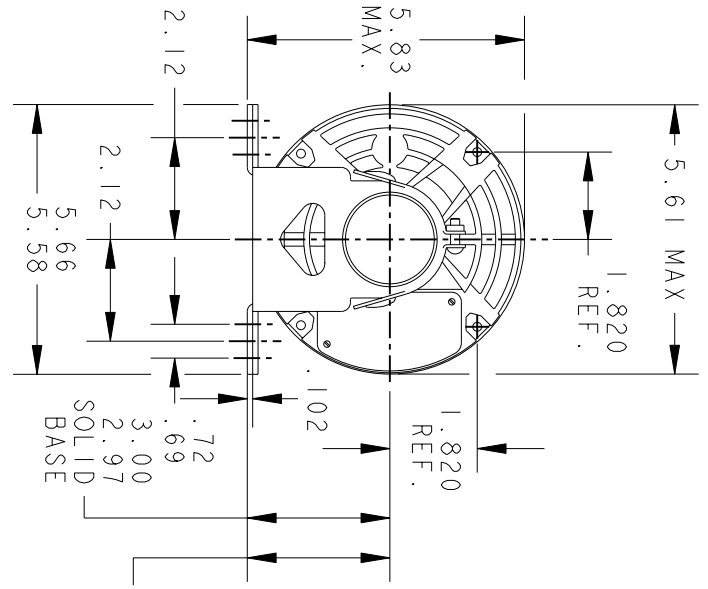
THIRD ANGLE PROJECTION



| REVISIONS | | DESCRIPTION | DATE | APPROVED |
|-----------|--------------------------|-------------|----------|----------|
| REV. 4 | REDRAWN NO CHANGE | T196-22390 | 07/10/96 | M. D. P |
| REV. 5 | CHG TO RBC FORMAT AS PER | IS05-1777 | 12/30/05 | GOVARDAN |



VIEW SHOWING
PE VENTILATION
OPENINGS



*W IS A CLEARANCE DUE TO VARIATION IN PARTS & ASSEMBLY.

| PT | TYPE | GE SIZE | NEMA FR | K | L | N | N-W | ZB | |
|----|------|---------|---------|-------|------|------|------|-----------|---------|
| 1 | KH | 37 | 48 | 10.69 | 1.54 | 5.05 | 1.88 | 2.01/1.79 | .55/.52 |

| SIGNATURES | | DATE |
|--------------|-----------|----------|
| MODEL | H.0 | 08/24/17 |
| DETAIL | | |
| CHECKED | | |
| ENGRG | | |
| MFG | | |
| QUALITY | | |
| ISSUED | M. D. P | 07/10/96 |
| SOLID MODEL: | 52A102396 | |



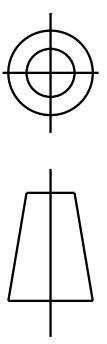
REGAL-BELOTT CORPORATION

OUTLINE

FORM N - GENERAL PURPOSE MOTOR - DRIP PROOF -
SOLID OR RESIL BASE - BALL OR SLEEVE BEARING

52A102396

SCALE: 0.250 REF. No.: SHEET 1 of 1



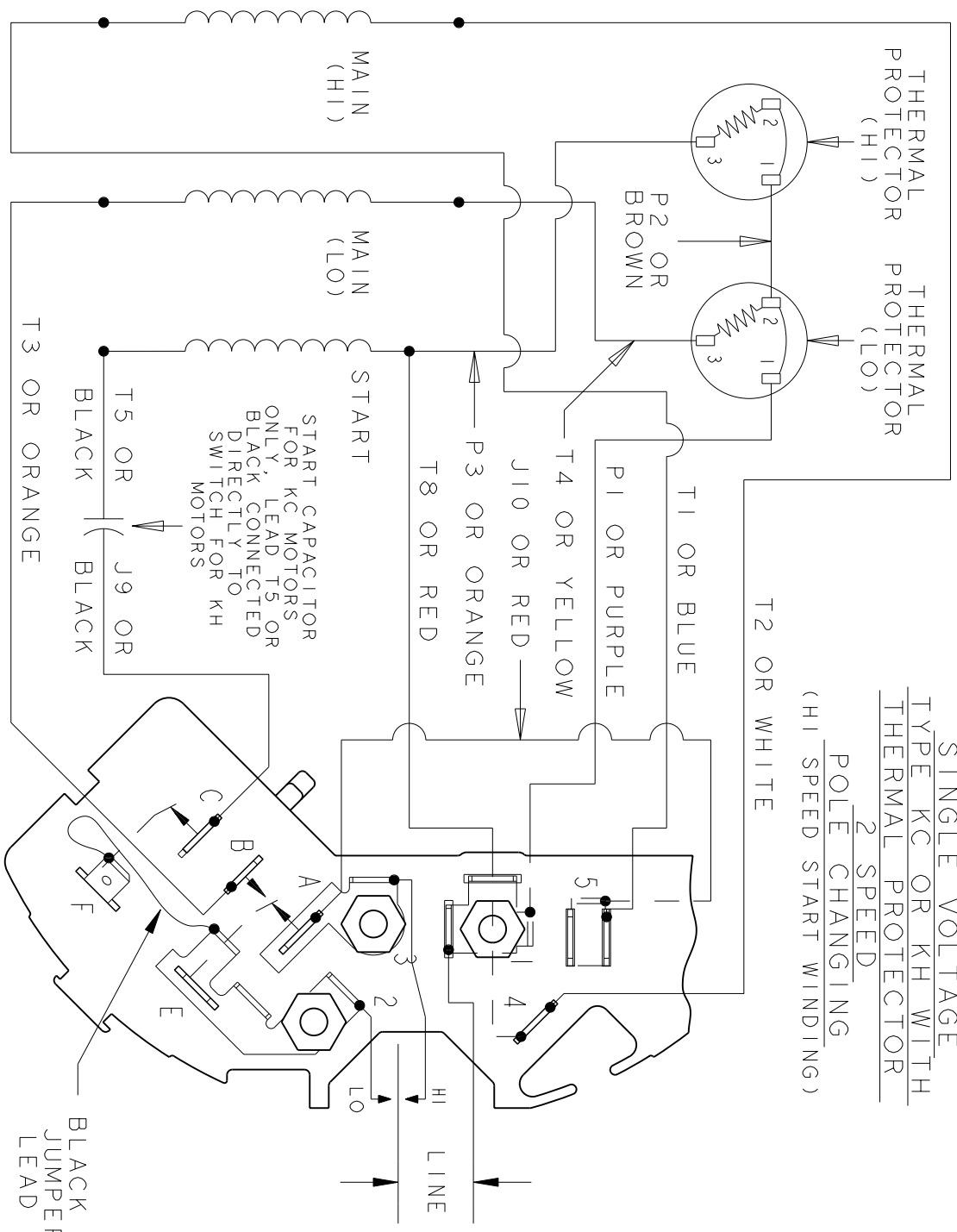
THIRD ANGLE PROJECTION

REVISIONS

| REV. | DESCRIPTION | DATE | APPROVED |
|------|----------------|----------|----------|
| 3 | UPDATED FORMAT | 12/19/05 | MAM |

REV 3

EITHER ROTATION
 SINGLE VOLTAGE
 TYPE KC OR KH WITH
 THERMAL PROTECTOR
 2 SPEED
 POLE CHANGING
 (HI SPEED START WINDING)



NOTE #1 - TO REVERSE ROTATION INTERCHANGE BLUE (T1) AND WHITE (T2) LEADS.
 NOTE #2 - WHEN MORE THAN ONE CAPACITOR IS USED CONNECT IN PARALLEL.

REF. DIAG. - 121A864

SWITCH (D) - 115D958BA
 CONNECTION LABEL - 52X332052

| SIGNATURES | | DATE |
|------------|--------------------------|----------|
| MODEL | M.D. PAPE | 11/20/87 |
| DETAIL | | |
| CHECKED | | |
| ENGRG | | |
| MFG | | |
| QUALITY | | |
| ISSUED | M.D.P. | 11/20/87 |
| MATERIAL | SOLID MODEL: 52A105385AA | |

REGAL-BELOIT CORPORATION

REGAL-BELOIT

CONNECTION DIAGRAM

FMF: 30 FRAME SWITCH REDESIGN

SIZE DRAWING A

SCALE: 1.000 REF. No.:

SHEET 1 of 1