

PRODUCT INFORMATION PACKET

Model No: 5KH39QN9548X
Catalog No: 4389
1/6-1/18,1725/1140,DP,48,1/60/115
Fan and Blower



Regal and Marathon are trademarks of Regal Beloit Corporation or one of its affiliated companies.
©2018 Regal Beloit Corporation, All Rights Reserved. MC017097E



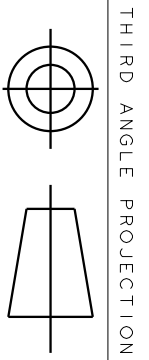
Nameplate Specifications

Output HP	1/6-1/18 Hp	Output KW	0.13 kW
Frequency	60 Hz	Voltage	115 V
Current	3.4,1.9 A	Speed	1725/1140 rpm
Service Factor	1.35	Phase	1
Efficiency	50.5 %	Duty	Continuous
Insulation Class	B	KVA Code	R
Frame	48	Enclosure	Drip Proof
Overload Protector	AUTO	Ambient Temperature	40 °C
Drive End Bearing Size	6203	Opp Drive End Bearing Size	6203
UL	Recognized	CSA	Yes
CE	N		

Technical Specifications

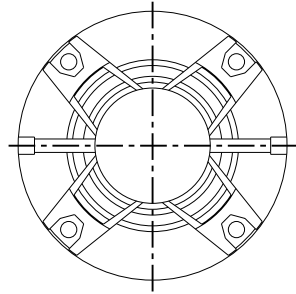
Electrical Type	Split Phase	Starting Method	SM
Poles	4	Rotation	Counterclockwise/Clockwise
Mounting	Resilient Base	Motor Orientation	ANY
Drive End Bearing	BALL	Opp Drive End Bearing	BALL
Frame Material	Rolled Steel	Overall Length	10 in
Frame Length	6.22 in	Shaft Diameter	0.5 in
Shaft Extension	1.5 in	Thru-bolts Extension	0
Outline Drawing	52A101440P4	Connection Diagram	52A105385AC

This is an uncontrolled document once printed or downloaded and is subject to change without notice. Date Created: 10/08/2018

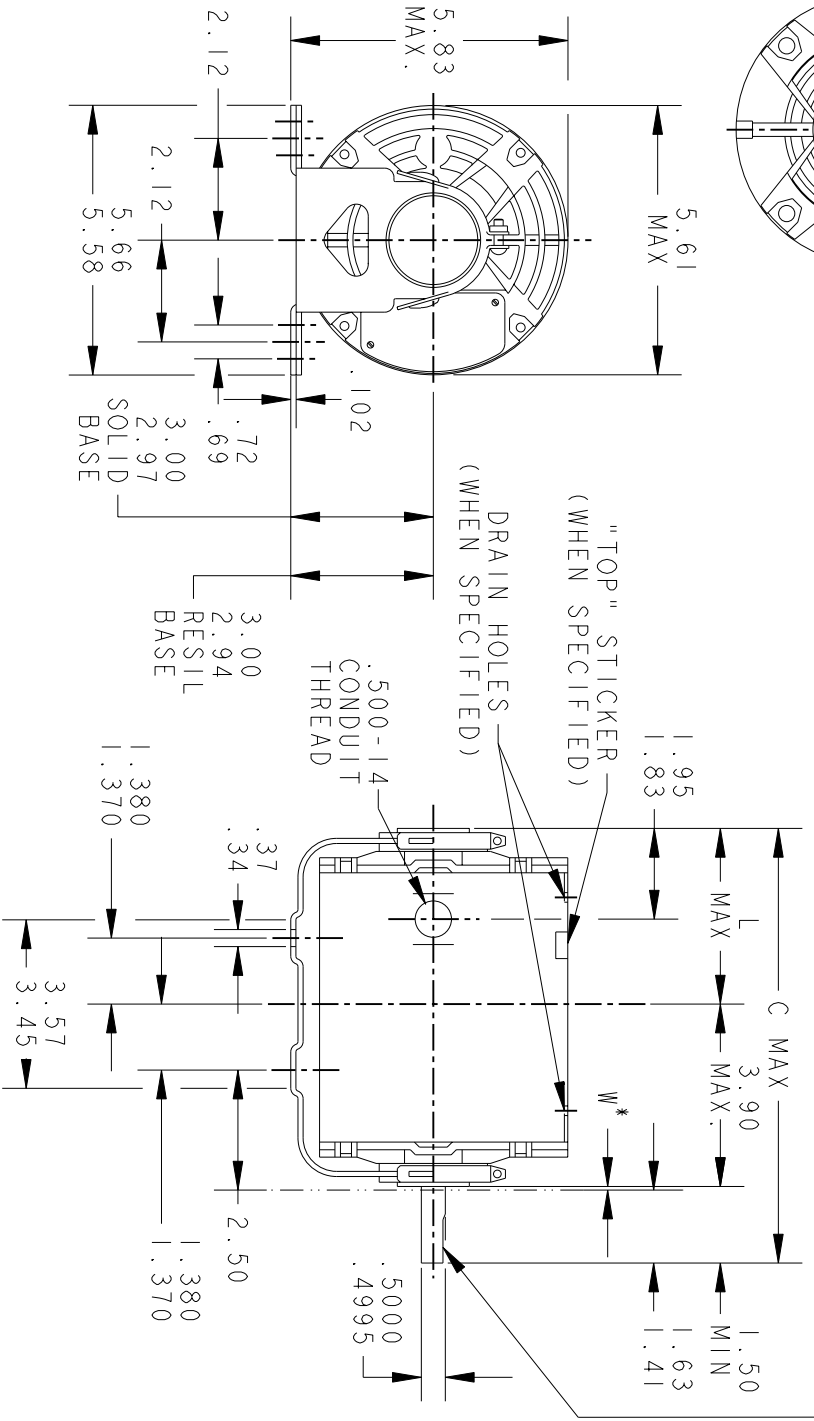


THIRD ANGLE PROJECTION

REVISIONS		DESCRIPTION	DATE	APPROVED
7	REDRAWN NO CHANGE	T196-22390	07/10/96	MDP
8	CHG TO RBC FORMAT PER IS 05-1777		15/12/05	GOVARDAN



VIEW SHOWING PE VENTILATION OPENINGS



* W IS A CLEARANCE DUE TO VARIATION IN PARTS & ASSEMBLY.

PT	TYPE	GE SIZE	NEMA FR	C	L	PT	TYPE	GE SIZE	NEMA FR	C	L
3	KH	33	48	9.19	3.84	6	KH	38	48	11.00	5.65
2	KH	32	48	8.94	3.59	5	KH	37	48	10.40	5.05
1	KH	35	48	9.57	4.22	4	KH	36	48	10.00	4.65

SIGNATURES		DATE
MODEL	GLB	11/14/74
DETAIL		
CHECKED		
ENGRG		
MFG		
QUALITY		
ISSUED	MDP	07/10/96
SOLID MODEL:	52A101440	

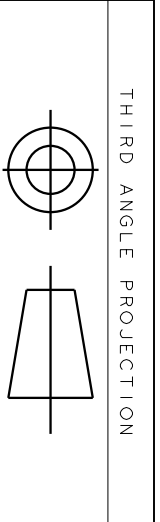


REGAL-BELOTT CORPORATION

OUTLINE

FORM G - GENERAL PURPOSE MOTOR - DRIP PROOF - SOLID OR RESIL BASE - BALL OR SLEEVE BEARING

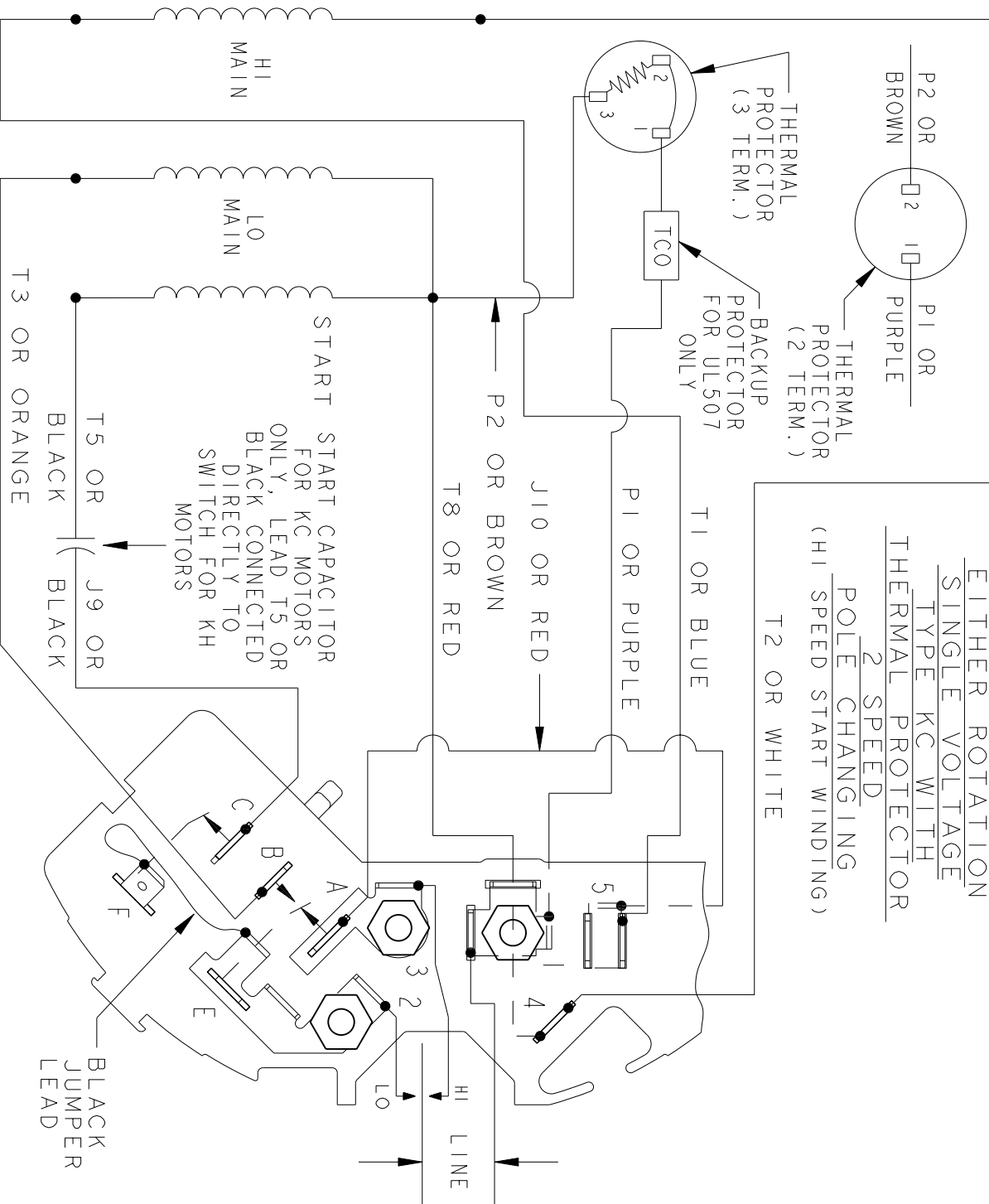
TITLE	SCALE: 1.000	REF. No.:	SHEET 1 of 1
SIZE DRAWING	A		
REV	52A101440	8	



REV.	DESCRIPTION	DATE	APPROVED
4	UPDATED FORMAT	12/19/05	MAM

REVISIONS

EITHER ROTATION
 SINGLE VOLTAGE
 TYPE KC WITH
 THERMAL PROTECTOR
 2 SPEED
 POLE CHANGING
 (HI SPEED START WINDING)
 T2 OR WHITE



NOTE #1 - TO REVERSE ROTATION INTERCHANGE BLUE (T1) AND WHITE (T2) LEADS.

NOTE #2 - WHEN MORE THAN ONE CAPACITOR IS USED CONNECT IN PARALLEL.

REF. DIAG. - 121A866

SWITCH (D) - 115D958BA
 CONNECTION LABEL - 52X332052

SIGNATURES	DATE
MODEL M.D. PAPE	12/14/87
DETAIL	
CHECKED	
ENGRG	
MFG	
FOR ADDITIONAL INFO REFER TO:	
APPLIED PRACTICES	QUALITY
DIMENSIONS ARE IN INCHES	ISSUED
MATERIAL	SOLID MODEL: 52A105385AC

REGAL-BELOTT CORPORATION

REGAL BELLOTT

CONNECTION DIAGRAM

FMF: 5KH35KN14IG5

52A105385AC

SCALE: 1.000 REF. No.: .

SHEET 1 of 1