



CWK24

24" X 24" BASIN



Durable, Corrosion Resistant Wastewater Basin

FEATURES

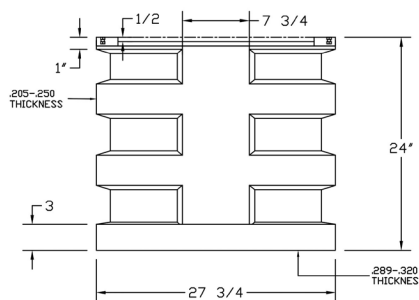
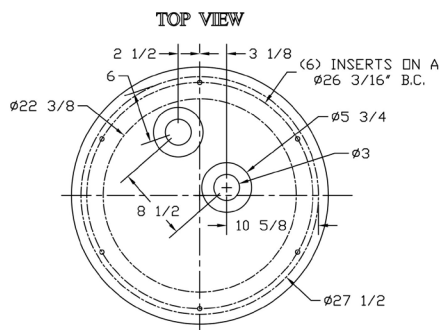
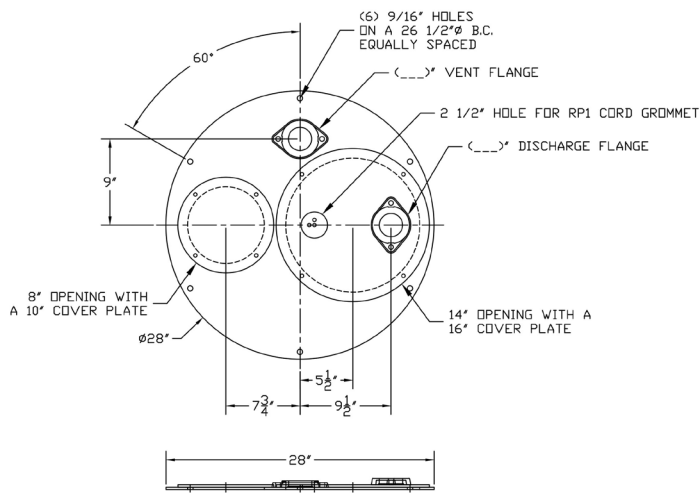
- For use with 2" wastewater pump
- Poly basin with PVC pipe, fittings, gasket tape
- Simplex steel cover with inspection port, 2" discharge, 2" vent, electrical cord grommet
- 4" inlet hub shipped loose (inlet hole cut by installer to align with inlet pipe)

APPLICATIONS

Designed for residential, light commercial and construction applications including:

- Basements
- Rural water districts
- Parks
- Dewatering
- Sewage lift stations
- Waste drainage in new additions (below the sewer line)
- Anywhere wastewater or drainage must be disposed of quickly, quietly and efficiently

DIMENSIONAL DRAWING



SPECIFICATIONS

CWK24 Kit

Part #: CWK24

Basin Material: Ribbed polyethylene basin (CWK24)

Basin Type: Simplex

Cover: Steel, with inspection port, 2" discharge, 2" vent and electrical cord grommet

Inlet Hub: 4" shipped loose (inlet hole cut by installer to align with inlet pipe)

BASIN KIT

Part Number	Description
24AGS0511	CWK24 basin with AGS Series, axial grinder pump, .5 hp, 115V, and piggy-back float switch (unassembled)
24AGS0512	CWK24 basin with AGS Series, axial grinder pump, .5 hp, 230V, and piggy-back float switch (unassembled)
24AGS1011	CWK24 basin with AGS Series, axial grinder pump, 1 hp, 115V, and piggyback float switch (unassembled)
24AGS1012	CWK24 basin with AGS Series, axial grinder pump, 1 hp, 230V, and piggyback float switch (unassembled)



Xylem Inc.
 2881 East Bayard Street Ext., Suite A
 Seneca Falls, NY 13148
 Phone: (866) 325-4210
 Fax: (888) 322-5877
www.xylem.com/goulds

Goulds is a registered trademark of Goulds Pumps, Inc. and is used under license.
 © 2019 Xylem Inc. BASINKITSALES R1 July 2019