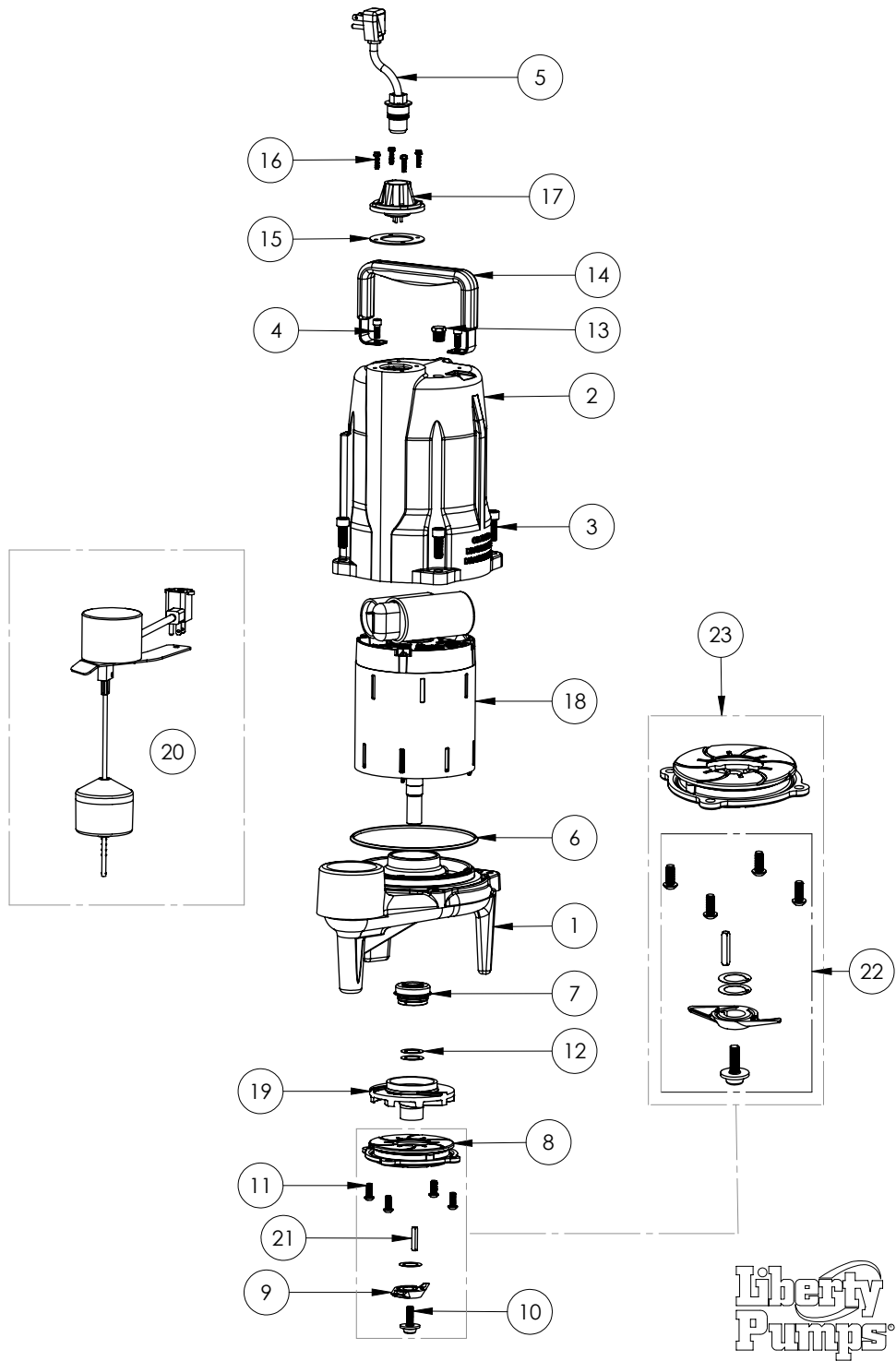


PRG101AV-2 (B70)



PRG100 SERIES

**PRG101AV-2 (B70)**

| <b>#</b> | <b>PART #</b> | <b>DESCRIPTION</b>                    | <b>QTY</b> | <b>Note</b> |
|----------|---------------|---------------------------------------|------------|-------------|
| 1        | 340100R       | VOLUTE, POWDER COATED                 | 1          |             |
| 2        | 340000R       | MOTOR HOUSING, POWDER COATED          | 1          |             |
| 3        | 5862000       | BOLT, 3/8-16X1 SHCS SS                | 4          |             |
| 4        | 8103000       | SCREW 1/4-20x5/8" HX SKT SS           | 2          |             |
| 5        | K001008       | POWER CORD, 115V, 25 FOOT CORD        | 1          |             |
| 6        | 3403000       | O-RING                                | 1          |             |
| 7        | 5633000       | 3/4" UNITIZED SHAFT SEAL              | 1          | [1]         |
| 8        | 3404000       | MACHINED CUTTER PLATE                 | 1          |             |
| 9        | 3406000       | CUTTER 2 BLADE MACH                   | 1          |             |
| 10       | 56362B0       | FLANGED IMPELLER BOLT, M8 THREAD      | 1          |             |
| 11       | 3405000       | 1/4-20 X 5/8 BUTTON HEAD SS CAP SCREW | 1          |             |
| 12       | K001445       | ROTARY CUTTER SHIM KIT                | 4          |             |
| 13       | 50710A0       | PIPE PLUG, 1/4" HEX HD BRASS NPTF     | 1          |             |
| 14       | 3411200       | HANDLE                                | 1          |             |
| 15       | 5060000       | CORD PLATE GASKET                     | 1          |             |
| 16       | 8064000       | #8-32 x 5/8 HEX WASHER HEAD SCREW     | 4          |             |
| 17       | 5014000       | CORD PLATE                            | 1          |             |
| 18       | 3407000       | 60Hz 1HP MOTOR                        | 1          | [1]         |
| 19       | 3410000       | 9 VANE IMPELLER                       | 1          |             |
| 20       | K001545       | KIT, VMII, 25' CORD, PRG              | 1          |             |
| 21       | 56350C0       | KEY, 3/16 X 3/16 X 1.06"              | 1          |             |
| 22       | K001447       | PROVORE CUTTER REPLACEMENT KIT        | 1          | [2]         |
| 23       | K001555       | CUTTER KIT, PROVORE WTH CUTTER PLATE  | 1          |             |

**PART NOTES:**

- [1] - Part requires factory authorized service. Contact Liberty Pumps at 1-800-543-2550
- [2] - For ProVoreCutter Replacment Instructions see PRG Cutter Replacement Procedure