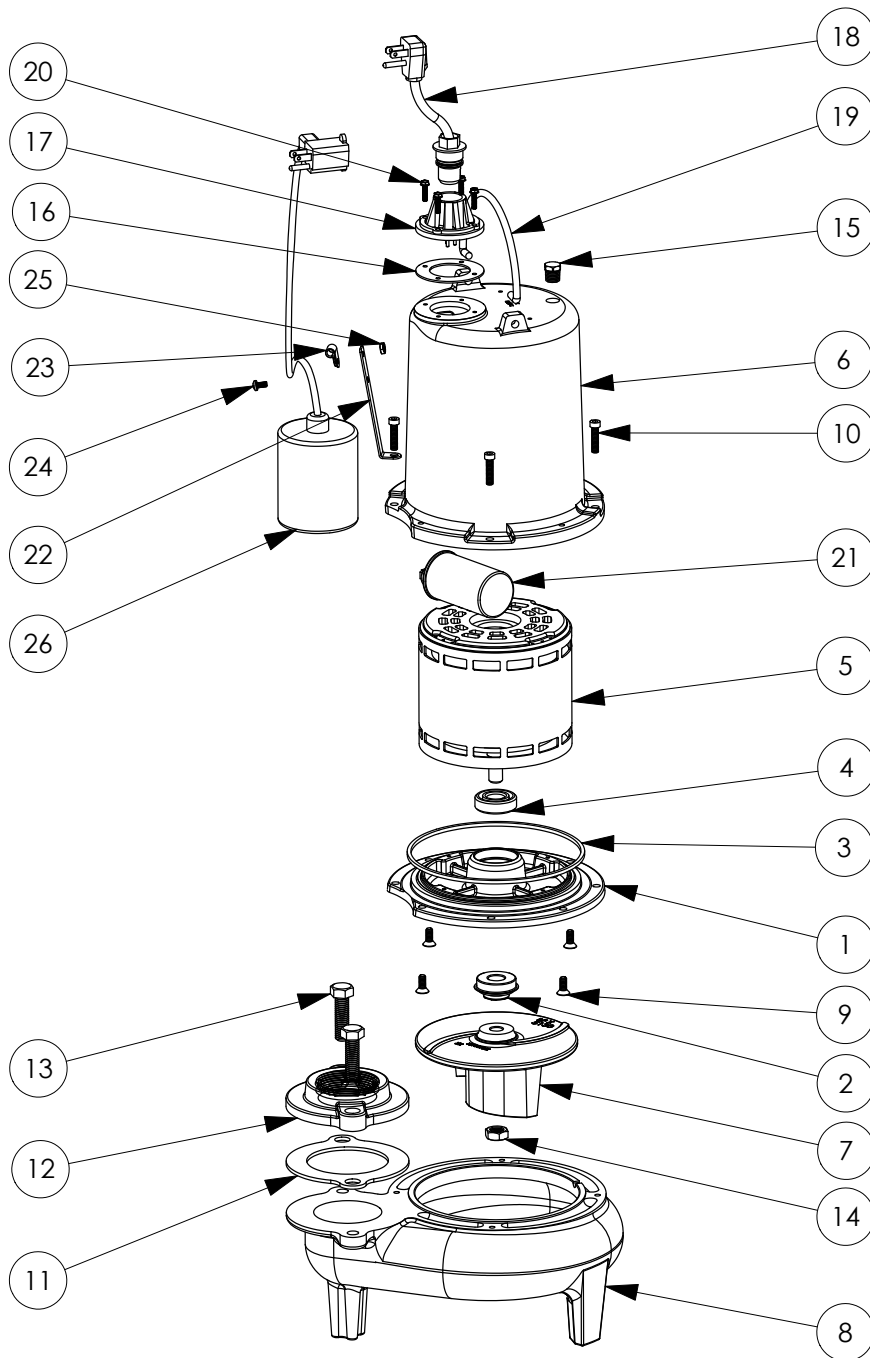


LE72A2-2 (B10)



LE72A2-2**LE72A2-2 (B10)**

#	PART #	DESCRIPTION	QTY	Note
1	510100R	MOTOR SUPPORT PLATE	1	
2	K001717	KIT, 5/8 UNITIZED 5120000 AND LIP SEAL 5860000	1	
3	5617000	O-RING	1	
4	5124000	BEARING	1	
5	5341000	MOTOR	1	
6	527700R	MOTOR COVER	1	
7	5130000	IMPELLER, CAST IRON	1	
8	510200R	VOLUTE HOUSING	1	
9	8018000	1/4-20 x 5/8 SLOTTED FLAT HEAD BOLT	4	
10	8091000	1/4-20 x 1 HEX SOCKET HEAD BOLT	4	
11	5129000	FLANGE GASKET, FITS 2" OR 3"	1	
12	K001221	2" DISCHARGE KIT	1	
13	8037000	1/2-13 x 1-3/4 STAINLESS STEEL BOLT	2	
14	8046000	1/2-20 HEX STAINLESS STEEL JAM NUT	1	
15	5071000	BRASS OIL PLUG	1	
16	5060000	CORD PLATE GASKET	1	
17	5014000	CORD PLATE	1	
18	K001059	POWER CORD, 230V, 25 FOOT CORD	1	
19	K001095	STAINLESS STEEL HANDLE	1	
20	8064000	#8-32 x 5/8 HEX WASHER HEAD SCREW	4	
21	51190D0	CAPACITOR	1	
22	5070000	FLOAT SWITCH SUPPORT	1	
23	8014000	CABLE CLAMP	1	
24	8082000	#10-24 x 3/8 EPOXY LOCK SCREW	1	
25	8002000	#10-24 STAINLESS STEEL HEX	1	
26	K001062	PUMP SWITCH, 25FT. INCLUDES MOUNTING HARDWARE	1	

LE72A2-2 (B10)