

PRODUCT INFORMATION PACKET



Model No: 985.654C
Catalog No: M1125214.00
...60:1.30RPM.100LBIN.1/17HP.30....12V..TENV.985.654C
PZ Series



Regal and Leeson are trademarks of Regal Beloit Corporation or one of its affiliated companies.
©2018 Regal Beloit Corporation, All Rights Reserved. MC017097E





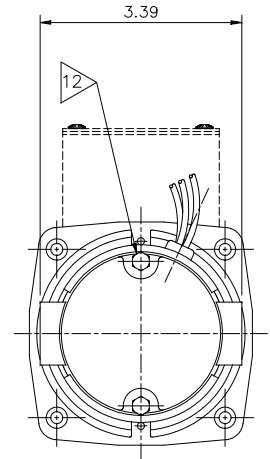
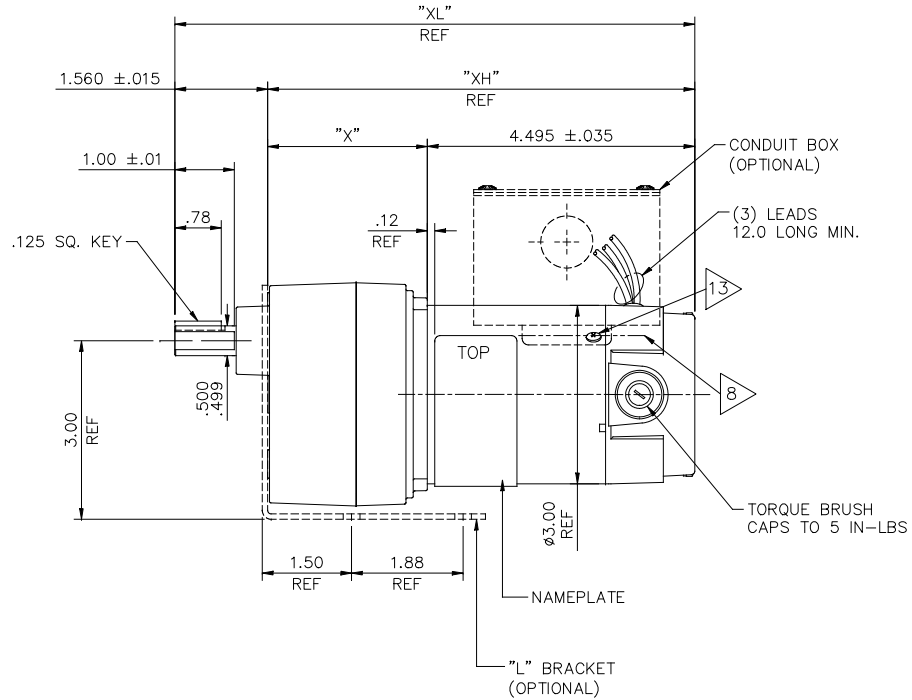
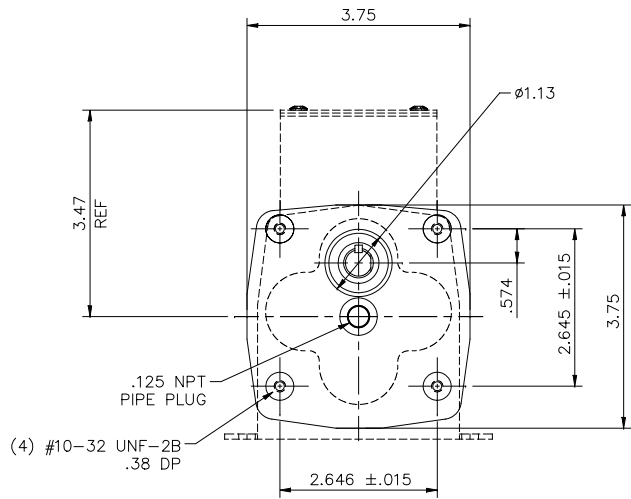
Nameplate Specifications

Output HP	0.06 Hp	Output KW	0.04 kW
Voltage	12 V	Current	5.2 A
Speed	30 rpm	Service Factor	1
Efficiency	59.4 %	Duty	Continuous
Insulation Class	F	Frame	30
Enclosure	Totally Enclosed Non Ventilated	Overload Protector	No
Ambient Temperature	40 °C	Drive End Bearing Size	6000
Opp Drive End Bearing Size	6000	UL	Recognized
CSA	Y	CE	N

Technical Specifications

Rotation	Reversible	Mounting	Special
Shaft Type	Parallel	Overall Length	8.74 in
Frame Length	2.99 in	Shaft Diameter	0.500 in
Shaft Extension	1 in		
Outline Drawing	M1030951-M1125214	Connection Diagram	M112521400FI

This is an uncontrolled document once printed or downloaded and is subject to change without notice. Date Created: 10/15/2018



- NOTES:
1. ROTATION: REVERSIBLE
 2. HIPOT: 1250 VAC FOR ONE SECOND, BOTH LEADS TO CASE
 3. LEADS: 14 GA
 4. BEARINGS: BALL BEARINGS BOTH ENDS
 5. CASTINGS: GEARBOX—DIE CAST ALUMINUM, REAR ENDCAP—DIE CAST ZINC
 6. MAGNET TUBE: ZINC PLATED STEEL
 7. INSULATION: CLASS F 155°C
 - 8 > NAME PLATE MUST BE IN LINE WITH HOLE WITHIN .06"
 9. TEST AND LUBRICATE GEARBOX PER 890-178
 10. PAINT PER DRAWING # PP985-6XX
 11. PACKAGE FOR SHIPMENT PER 890-179
 - 12 > TORQUE THRUBOLTS TO 20-25 IN-LB
 - 13 > INSTALL CONDUIT BOX SCREWS AT FINAL ASSEMBLY BEFORE PAINTING

MODEL No.	VOLTAGE	CATALOG No.	TYPE	RATIO	TORQUE	HP	RPM	"XL" inch	"XH" inch	"X" inch
985.653	12VDC	M1125213.00	DN	180:1	100 IN.LB.	1/20	10	9.28	7.72	3.25
985.654	12VDC	M1125214.00	DN	60:1	100 IN.LB.	1/17	30	8.74	7.18	2.68
985.655	12VDC	M1125215.00	DN	30:1	56 IN.LB.	1/17	55	8.74	7.18	2.68
985.656	12VDC	M1125216.00	DN	18:1	36 IN.LB.	1/17	90	8.74	7.18	2.68

ITEM No.	ITEM REV
-00	001

		TOLERANCES UNLESS SPECIFIED		LEESON	ELECTRIC MOTORS GEARMOTORS AND DRIVES	DRAWN KLS 11/24/04	
		DEC.	INCHES			CHK	IPG 11/24/04
		.X	±.1	TITLE		SCALE 1=2	
D	REMOVED ±1.00 FROM LEAD LENGTH, ECO-0128114	IPG	7/25/17	30 FRAME DC- PZ GEARBOX		REF M1125213-160L	
00	RELEASED PER ECR 86540	KLS	11/24/04	MAT'L		FMF M1125216.00	
NO.	REVISION	BY & DATE	CHK	ANG	±1/2"	FINISH	PREV
THIS DRAWING IN DESIGN AND DETAIL IS OUR PROPERTY AND MUST NOT BE USED EXCEPT IN CONNECTION WITH OUR WORK ALL RIGHTS OF DESIGN AND INVENTION ARE RESERVED THIS IS AN ELECTRONICALLY GENERATED DOCUMENT - DO NOT SCALE THIS PRINT				RFP	CAD FILE	M1030951	SIZE
				DIST			DRAWING NO.
						B	M1030951
						REV. D	

1. HIPOT @ 1250 VOLTS FOR ONE SECOND, RED & BLACK LEADS TO CASE
2. RED LEAD POS (+)
- BLACK LEAD NEG (-)
- } CCWSE (MOTOR ONLY-SHAFT OUTPUT END)
3. RUN IN @ 12 VDC, 1.95 MAX AMPS, NO LOAD
4. TORQUE THRUBOLTS TO 20-25 LB. IN.
5. ALL MOTORS TO BE RUN-IN AT FREE-LOAD FOR 30 MINS. [REVERSING DIRECTION AT 15 MINUTES] AT 12±1 VDC.


CHECKS TO OUTLINE DRAWING

- A. LEAD LENGTH & STRIP
- B. SHAFT ROTATION (GEARBOX)
- C. LABEL CORRECT, POSITION (CRITICAL) & DATE CODE
- D. -
- E. PAINT - SMOOTH. COMPLETE & NO RUNS
- F. CONDUIT BOX SCREWS
- G. GEARBOX ID
- H. GEARBOX OIL PLUG TORQUE (24 LB. IN.)

PERFORMANCE SPECIFICATIONS

TORQUE	SPEED	MAX AMPS
0 LB. IN.	30-36	1.95
50 LB. IN.	28-34	3.85
100 LB. IN.	26-32	5.75

UL NUMBER: 985.654

04	NOTE 3: 1.95 WAS 1.48. ADDED PERF. SPECS. AT 0 LB-IN, 28-34 WAS 29-32, 3.85 WAS 3.62, 26-32 WAS 27-30, 5.75 WAS 5.70.	SJB 6/16/2010		TOLERANCES UNLESS SPECIFIED		 ELECTRIC MOTORS GEARMOTORS AND DRIVES	DRAWN AD 1/29/01	
			DEC.	INCHES			CHK	
			.X	±.1			APPD	
03	REMOVED KEY & RUBBER BAND/"D"OUT.CHKS. ECR83964	RPB 12/17/03	BC	.XX	±.01	TITLE	SCALE 1=1	
02	CHG'D NOTE 5	JKM 11/8/02		.XXX	±.005	FINAL INSPECTION 30 FRAME DC - PZ GEARBOX	REF	
01	1.48 W .74; 29-32 WAS 30-33; 3.62 W 3.4; 5.70 W 5.8	AD 3/27/01		.XXXX	±.0005	MAT'L.	FMF	
NO.	REVISION	BY & DATE	CHK	ANG	±1/2'	FINISH	PREV	
THIS DRAWING IN DESIGN AND DETAIL IS OUR PROPERTY AND MUST NOT BE USED EXCEPT IN CONNECTION WITH OUR WORK ALL RIGHTS OF DESIGN AND INVENTION ARE RESERVED THIS IS AN ELECTRONICALLY GENERATED DOCUMENT - DO NOT SCALE THIS PRINT			RFP	CAD FILE M112521400FI		SIZE	DRAWING NO.	REV.
			DIST			A	M1125214.00FI	04