

# PRODUCT INFORMATION PACKET



Model No: A6K17NB32A

Catalog No: A009594.00

..1.5 HP..1800RPM.56H.TEAO.115/230V.1PH.60HZ.CONT.40C..RIGID.....FARM AG.....  
Agricultural



Regal and Leeson are trademarks of Regal Beloit Corporation or one of its affiliated companies.

©2018 Regal Beloit Corporation, All Rights Reserved. MC017097E



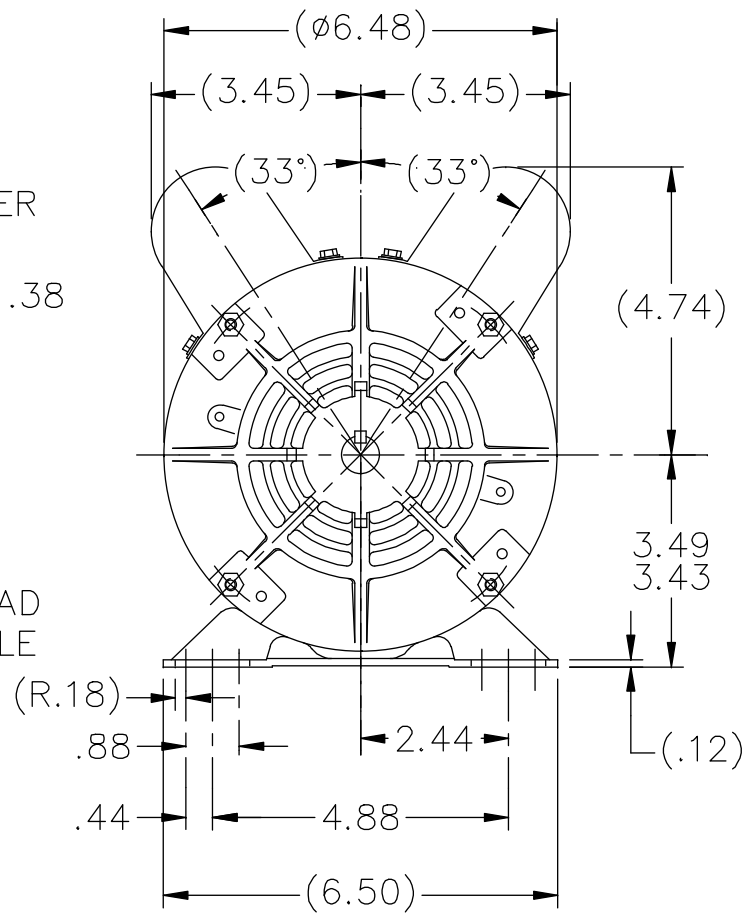
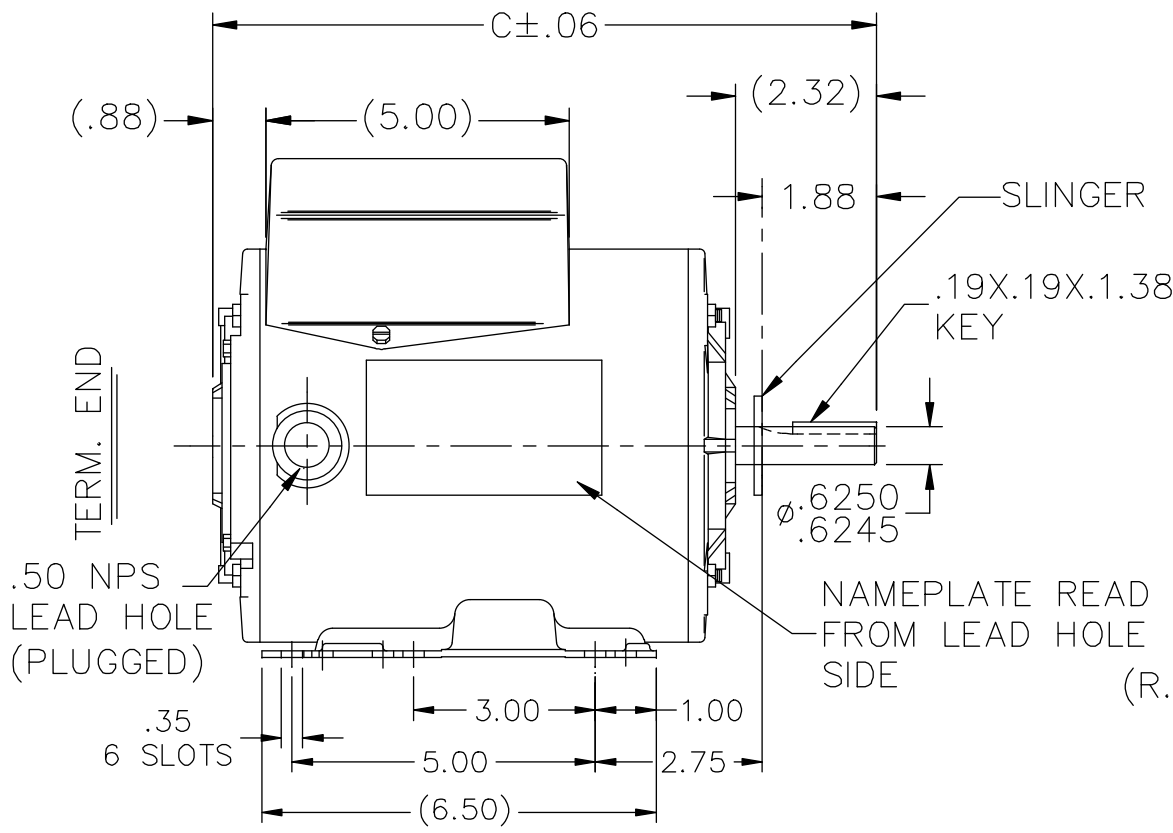


### Nameplate Specifications


Output HP	1.50 Hp	Output KW	1.1 kW
Frequency	60 Hz	Voltage	115/230 V
Current	11.6/5.8 A	Speed	1725 rpm
Service Factor	1	Phase	1
Efficiency	84 %	Duty	Continuous
Insulation Class	B	Design Code	N
KVA Code	E	Frame	56H
Enclosure	Totally Enclosed Air Over	Overload Protector	Automatic Lock Rotor Only
Ambient Temperature	40 °C	Drive End Bearing Size	6203
Opp Drive End Bearing Size	6203	UL	Recognized
CSA	Y	CE	N
IP Code	43		

### Technical Specifications

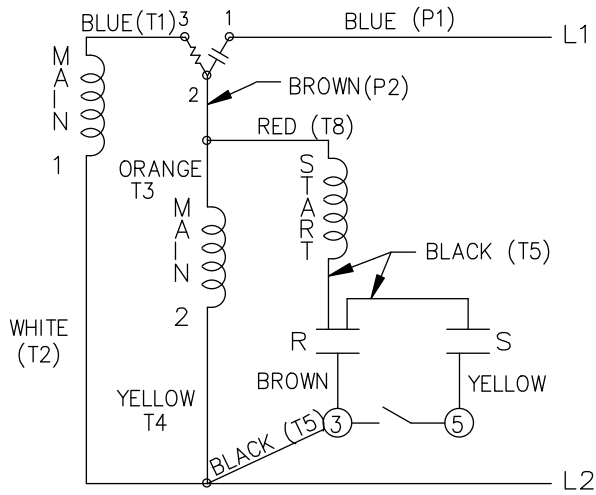
Electrical Type	Capacitor Start Capacitor Run	Starting Method	Across The Line
Poles	4	Rotation	Selective Counterclockwise
Mounting	Rigid base	Motor Orientation	HORIZONTAL
Drive End Bearing	BALL	Opp Drive End Bearing	BALL
Frame Material	Rolled Steel	Shaft Type	NEMA 56
Overall Length	11.94 in	Frame Length	8.06 in
Shaft Diameter	0.625 in	Shaft Extension	1.88 in
Assembly/Box Mounting	F1 ONLY		
Outline Drawing	A-107336LE-806	Connection Diagram	A-102006-85LE



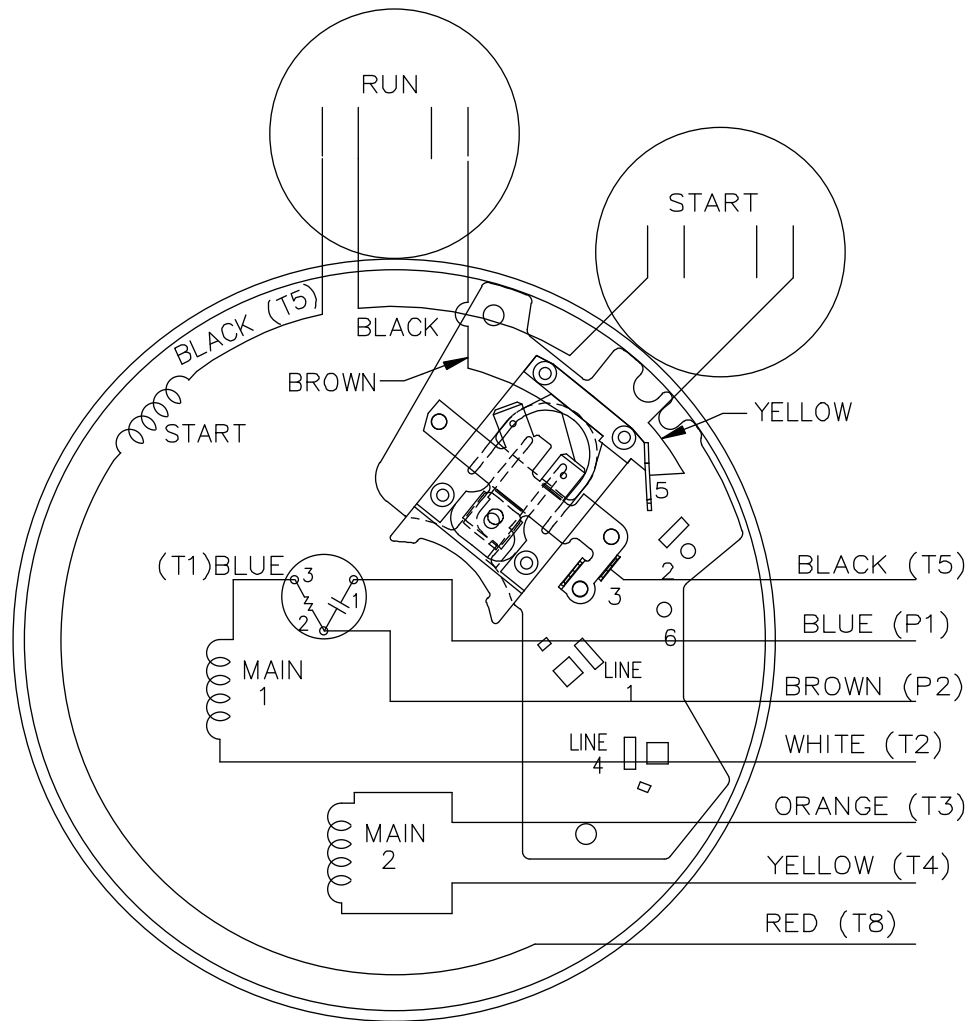
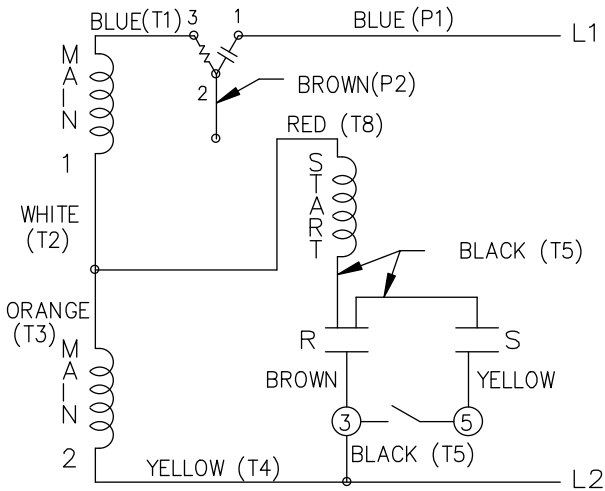
DASH	C	DASH	C
		756	11.44
606	9.94	806	11.94
656	10.44	856	12.44
706	10.94	906	12.94

				TOLERANCES UNLESS SPECIFIED		 ELECTRIC MOTORS GEARMOTORS AND DRIVES	DRAWN NB 10-18-2007			
				DEC.	INCHES		CHK	VL 01-29-2008		
				.X	±.1	TITLE OUTLINE 56 FR. - TE - BB MAT'L.	APPD	NB 01-29-2008		
				.XX	±.03		SCALE	5=16		
				.XXX	±.005		REF	100588		
				.XXXX	±.0005		FMF	ME070145		
				ANG	±7'30"		PREV	ME070145OL		
NO.	REVISION			BY & DATE	CHK	ANG	FINISH	PREV		
THIS DRAWING IN DESIGN AND DETAIL IS OUR PROPERTY AND MUST NOT BE USED EXCEPT IN CONNECTION WITH OUR WORK ALL RIGHTS OF DESIGN AND INVENTION ARE RESERVED THIS IS AN ELECTRONICALLY GENERATED DOCUMENT - DO NOT SCALE THIS PRINT				RFP	01-29-2008	CAD FILE	107336LE	SIZE	DRAWING NO. PAGE OF	REV.
				DIST	WP			A	107336LE	

LOW VOLTAGE C.C.W.



HIGH VOLTAGE C.C.W.

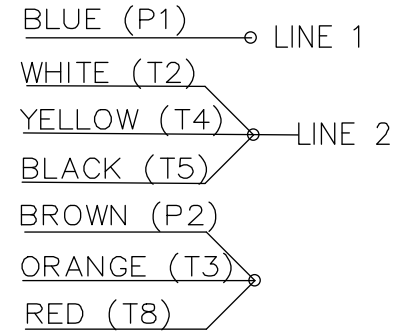


NOTE: USE P & T TERMINALS WHEN CALLED IN BOM

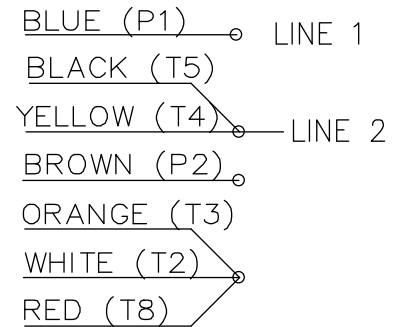
102006-85LE

DUAL VOLTAGE  
CAP. START-CAP. RUN  
OVERLOAD SELECT  
ROTATION.


LOW VOLT. CCW ROT.



HIGH VOLT. CCW ROT.



FOR CW ROT. EITHER  
VOLTAGE INTERCHANGE  
RED(T8) WITH BLACK(T5) LEAD.

		TOLERANCES UNLESS SPECIFIED		 ELECTRIC MOTORS GEARMOTORS AND DRIVES	DRAWN	VS 1/28/10			
		DEC.	INCHES		CHK				
		.X	±.1		APPD	VS 1/28/10			
		.XX	±.02		SCALE	5=8			
		.XXX	±.005		REF	102006-85			
01	ADDED P & T TERMINALS	UD	09/27/13	SKM	.XXXX	±.0005	MAT'L.	FMF	
NO.	REVISION	BY & DATE	CHK	ANG	±7'30"	FINISH		PREV	
THIS DRAWING IN DESIGN AND DETAIL IS OUR PROPERTY AND MUST NOT BE USED EXCEPT IN CONNECTION WITH OUR WORK ALL RIGHTS OF DESIGN AND INVENTION ARE RESERVED THIS IS AN ELECTRONICALLY GENERATED DOCUMENT - DO NOT SCALE THIS PRINT				RFP	CAD FILE 102006-85LE		SIZE	DRAWING NO. PAGE OF	REV.
				DIST	WP		A	102006-85LE	01



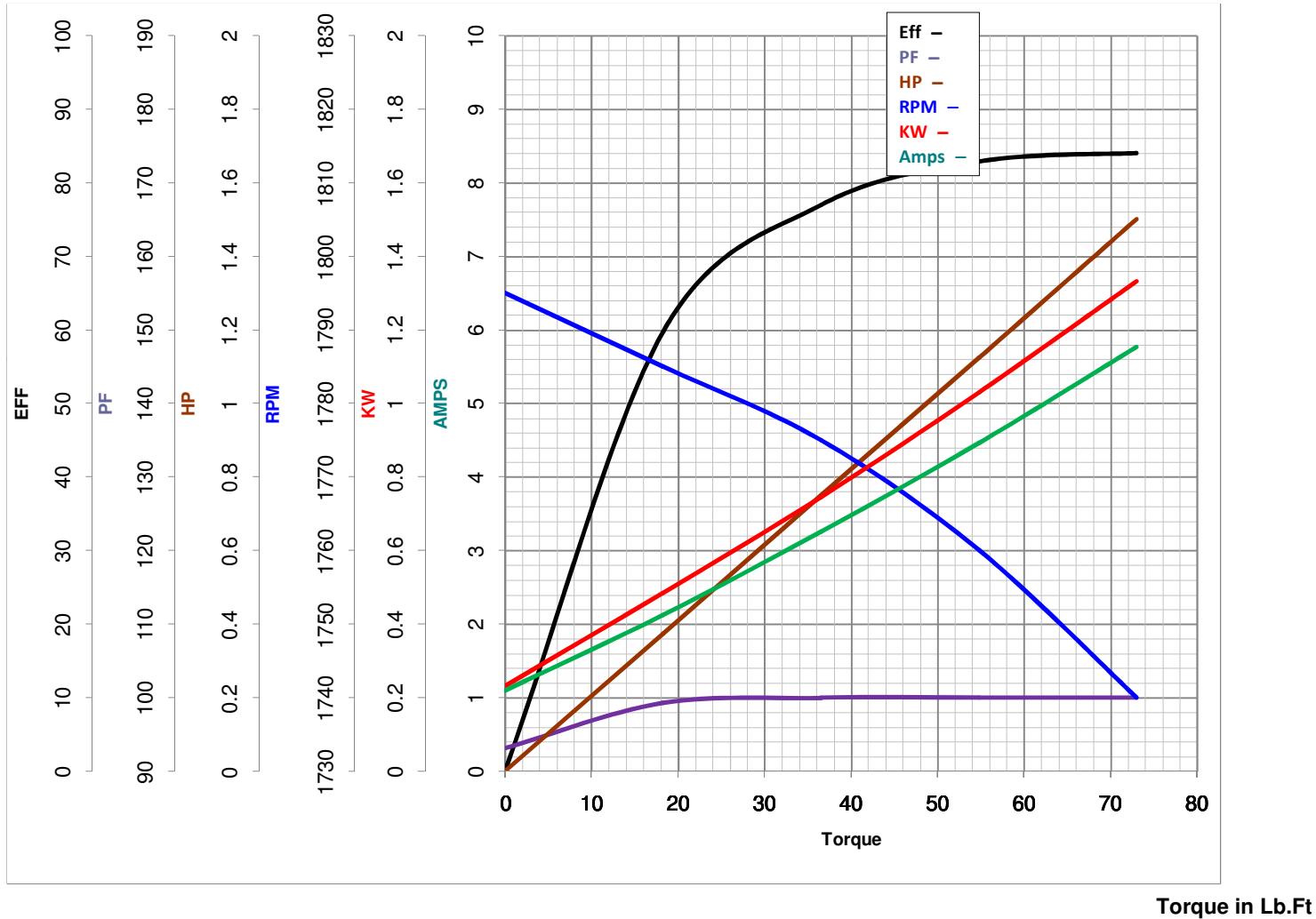
**LEESON ELECTRIC CORPORATION**  
 TYPICAL PERFORMANCE CURVE for AC MOTOR

Model No A009594.00

Curve at 230 Volts      HP 1.50      PHASE 1  
60 HZ  
1.5 HP      VOLTS 115/230

Catalog No A009594.00

HZ 60      RPM 1725



FL TORQUE 4.563 Lb.Ft  
 BD TORQUE 9.1 Lb.Ft  
 LR TORQUE 5.644 Lb.Ft

FL AMPS 11.6/5.8  
 PU TORQUE 5.5 Lb.Ft  
 LR AMPS 30.4

WINDING ZB4187-3

Date 4/10/2018