

# PRODUCT INFORMATION PACKET



Model No: A6T34XC49A

Catalog No: 119424.00

..1HP..3600RPM.56J.EPFC.230/460V.3PH.60HZ.CONT.40C.1.00SF.C FACE.....GENERAL  
PURPOSE.AUTO.....

Explosion Proof



Regal and Leeson are trademarks of Regal Beloit Corporation or one of its affiliated companies.

©2018 Regal Beloit Corporation, All Rights Reserved. MC017097E





### Nameplate Specifications

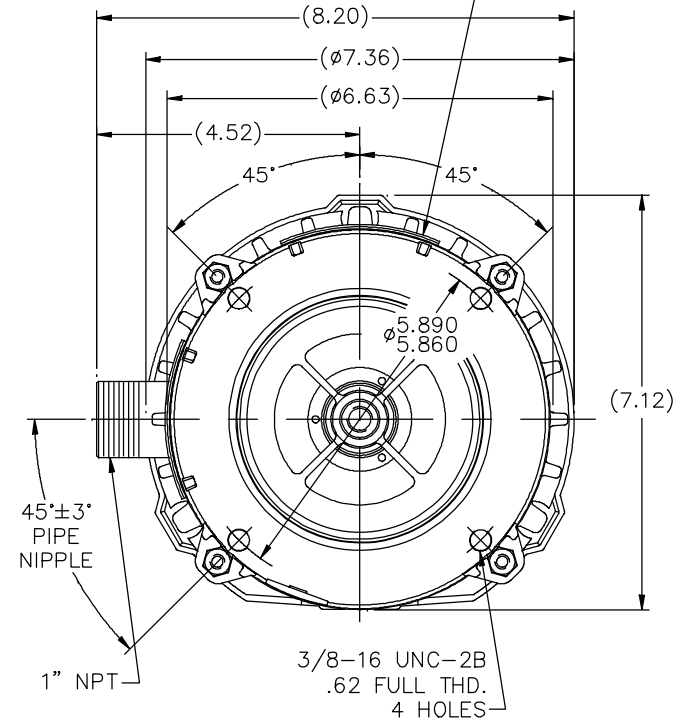
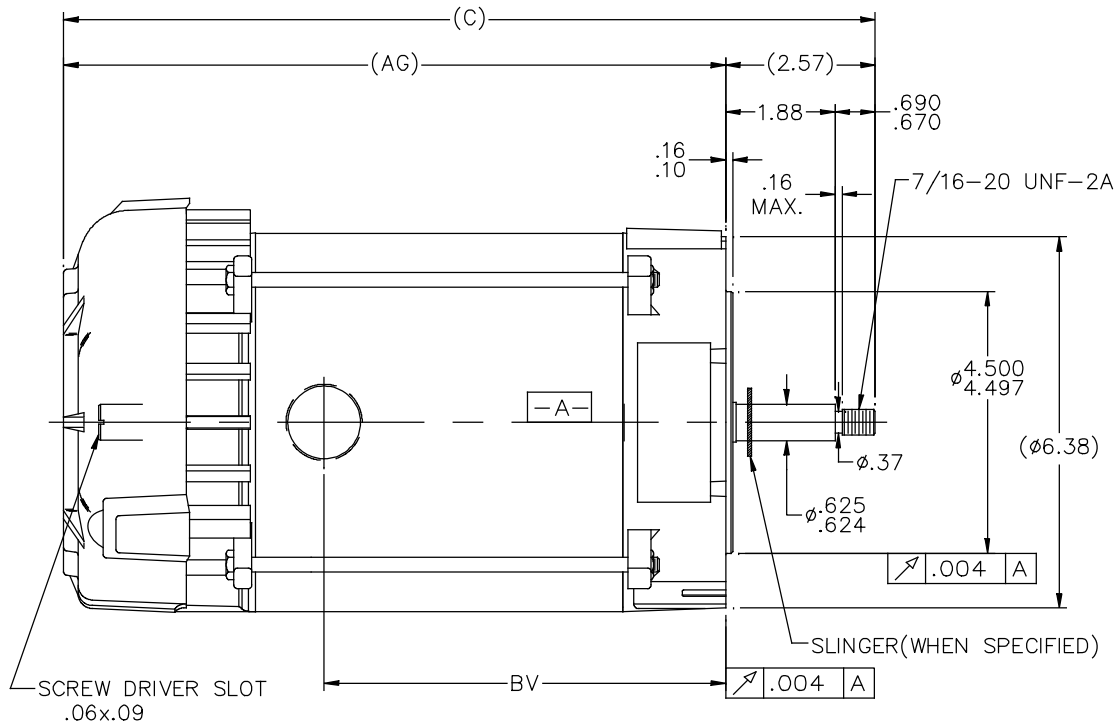
Output HP	1 Hp	Output KW	0.75 kW
Frequency	60 Hz	Voltage	230/460 V
Current	3.0/1.5 A	Speed	3450 rpm
Service Factor	1	Phase	3
Efficiency	80 %	Duty	Continuous
Insulation Class	B	Design Code	B
KVA Code	K	Frame	56J
Enclosure	Explosion Proof Fan cooled	Overload Protector	Automatic
Ambient Temperature	40 °C	Drive End Bearing Size	6203
Opp Drive End Bearing Size	6203	UL	Recognized
CSA	Y	CE	N
IP Code	54		

### Technical Specifications

Electrical Type	Squirrel Cage Induction Run	Starting Method	Across The Line
Poles	2	Rotation	Reversible
Mounting	Round	Motor Orientation	HORIZONTAL
Drive End Bearing	BALL	Opp Drive End Bearing	BALL
Frame Material	Rolled Steel	Shaft Type	J
Overall Length	14.45 in	Frame Length	6.81 in
Shaft Diameter	0.625 in	Shaft Extension	2.44 in
Assembly/Box Mounting	F1 ONLY		
Outline Drawing	B-104213LE-681	Connection Diagram	EE7335-LE

104213LE

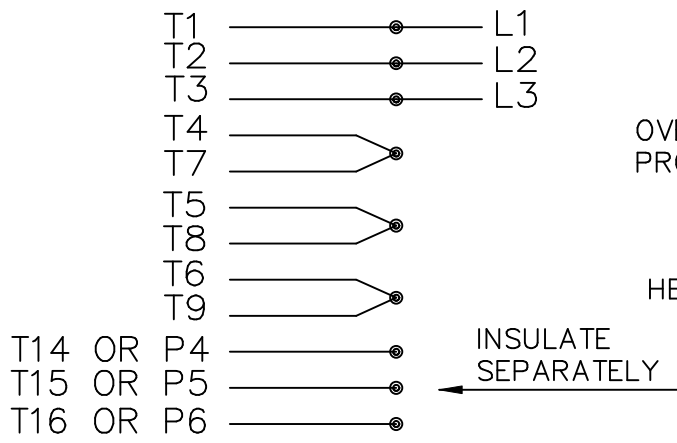
NAMEPLATES TO BE READ FROM SHAFT EXT. END



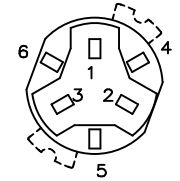
DASH	C	AG	BV
631	13.95	11.38	6.90
681	14.45	11.88	7.40
731	14.95	12.88	8.40
831	15.95	13.38	8.90
881	16.45	13.88	9.40
931	16.95	14.38	9.90
981	17.45	14.88	10.40

		TOLERANCES UNLESS SPECIFIED		LEESON		ELECTRIC MOTORS GEARMOTORS AND DRIVES		DRAWN R/JW 06-22-2007	
		DEC.	INCHES					CHK	ML 06-22-2007
		.X	±.1					APPD	GK 06-22-2007
		.XX	±.03	TITLE OUTLINE				SCALE	1=2
		.XXX	±.005	56 FR. - C'FACE - EXP. PR.				REF	
A	ADDED NOTE TO SLINGER	MVG	01/24/18	SM	.XXX	±.0005	MAT'L	FMF	
REVISION		BY & DATE		CHK	ANG	±7'30"	FINISH	PREV	
THIS DRAWING IN DESIGN AND DETAIL IS OUR PROPERTY AND MUST NOT BE USED EXCEPT IN CONNECTION WITH OUR WORK. ALL RIGHTS OF DESIGN AND INVENTION ARE RESERVED. THIS IS AN ELECTRONICALLY GENERATED DOCUMENT - DO NOT SCALE THIS PRINT				RFP	06-22-2007	CAD FILE	104213LE	SIZE	DRAWING NO. PAGE OF REV.
				DIST	WP			B	104213LE A

HIGH VOLTAGE CONNECTIONS

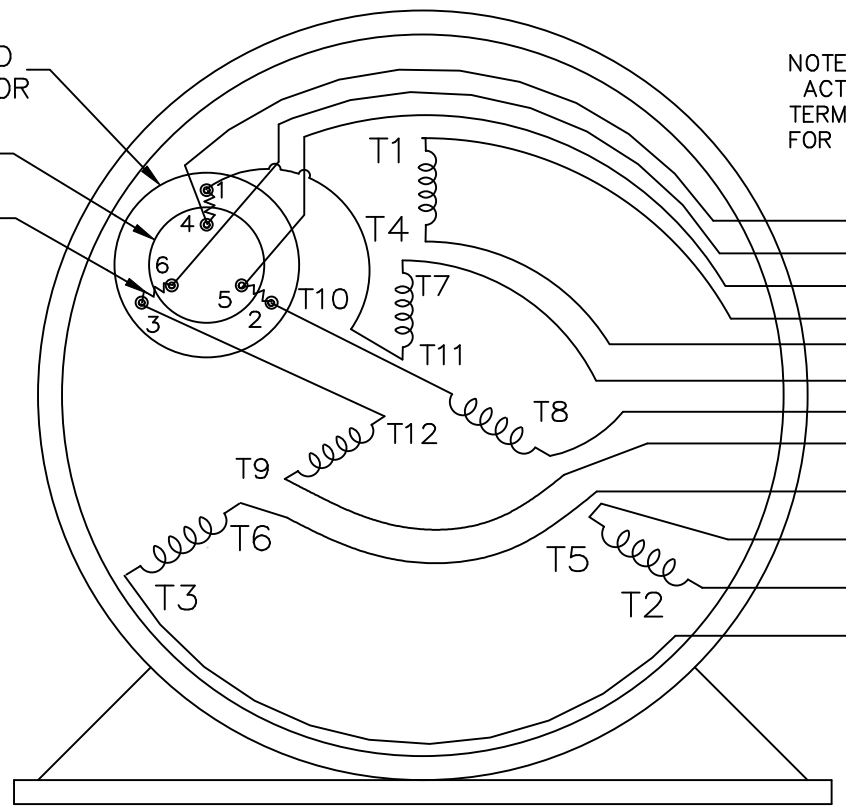


THREE PHASE - DUAL VOLTAGE MOTOR WITH OVERLOAD PROTECTOR



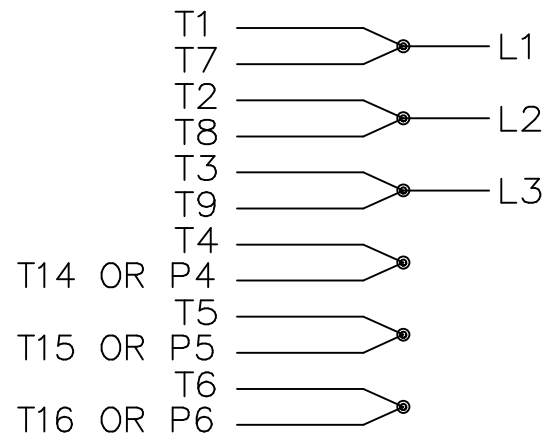
NOTE:  
ACTUAL PROTECTORS  
TERMINAL LOCATIONS  
FOR LEAD CONNECTIONS

OVERLOAD PROTECTOR  
DISC  
HEATER



T14 OR P4  
T16 OR P6  
T15 OR P5

LOW VOLTAGE CONNECTIONS



VIEW OF TERMINAL END

T2K  
T4D  
T6AN

				TOLERANCES UNLESS SPECIFIED		ELECTRIC MOTORS GEARMOTORS AND DRIVES	DRAWN NJS 04-20-2005			
				DEC.	INCHES		CHK ML 04-20-2005			
				.X	± -		APPD MJS 04-20-2005			
				.XX	± -		SCALE			
				.XXX	± -		REF			
				.XXXX	± -	MAT'L.				
NO.	REVISION	BY & DATE	CHK	ANG	± -	FINISH	PREV			
THIS DRAWING IN DESIGN AND DETAIL IS OUR PROPERTY AND MUST NOT BE USED EXCEPT IN CONNECTION WITH OUR WORK ALL RIGHTS OF DESIGN AND INVENTION ARE RESERVED THIS IS AN ELECTRONICALLY GENERATED DOCUMENT - DO NOT SCALE THIS PRINT				RFP	04-20-2005	CAD FILE EE7335_LE	SIZE A	DRAWING NO. EE7335-LE	PAGE OF	REV.
				DIST	WP					



CERTIFICATION DATA SHEET

P.O. BOX 8003  
WAUSAU, WI 54401-8003  
PH. 715-675-3311

DATA VOLTS: 460

CONN. DIAGRAM: EET7335-LE  
OUTLINE: B-104213LE-681  
WINDING: Z1270

CAT #: 119424.00

R14 1

TYPICAL MOTOR PERFORMANCE DATA

HP	KW	SYNC RPM	FL RPM	FRAME	ENCLOSURE	TYPE	KVA CODE	DESIGN		
1	0.75	3600	3500	56J	EPFC	TFR	K	B		
PH	HZ	VOLTS	AMPS	START TYPE	DUTY	INSL	S.F.	AMB	ELEV.	
3	60/50	230/460#190/380	3/1.582/6/1.3	ACROSS THE LINE	CONT	B	1.15	40	3300	
F.L. EFF		3/4 LD EFF		1/2 LD EFF		ELECT. TYPE				
80.0		78.0		75.0		SQ CAGE IND RUN				
F.L. PF		3/4 LD PF		1/2 LD PF						
83.5		78.0		67.5		77.0				
F.L. TORQUE		LR AMPS @ 460 V		L.R. TORQUE		B.D. TORQUE		F.L. RISE (°C)		
1.50 LB-FT		11.0		3.5 LB-FT 233%		5.3 LB-FT 353%		35		
PRESSURE @ 3		POWER		ROTOR WK²		MAX. LOAD WK²		SAFE STALL TIME	STARTS/HOUR	MOTOR WGT
68 DBA		77 DBA		0.03 LB-FT²		0 LB-FT²		10 SEC.	0	32 LB.

\*\*\* SUPPLEMENTAL INFORMATION \*\*\*

DE BRACKET TYPE	ODE BRACKET TYPE	MOUNT TYPE	MOTOR ORIENTATION	SEVERE DUTY	HAZARDOUS LOCATION	DRIP COVER	SCREENS	PAINT
C-FACE	STANDARD	ROUND	HORIZONTAL	NO	DEF CL IGR C&D CL IIGH	NO	NONE	JE-LEESON/ENAM
BEARINGS		SHAFT TYPE		SPECIAL DE		SHAFT		MATERIAL
DE	ODE	GREASE	POLYREX EM	JET PUMP	NONE	416 STAINLESS (C-503)	ROLLED STEEL	
THERMOSTATS		PROTECTORS		WIDG RTD's		BRG RTD's		THERMISTORS
NONE		AUTOMATIC		NONE		NONE		NONE
R1 (ohms/ph)		R2 (ohms/ph)		X1 (ohms/ph)		X2 (ohms/ph)		Xm (ohms/ph)
11.332		5.652		15.08		17.608		406.12
VIBRATION (in/sec)		O.D.E.		F.L. TORQUE		MOTOR WGT		FRAME MATERIAL
0.150		NONE		32 LB.		35		ROLLED STEEL

* INVERTER TORQUE: NONE	
* INV. HP SPEED RANGE: NONE	
ENCODER: NONE	
BRAKE: NONE	
FT-LB: NA	
VOLTAGE: NONE	
UL: Y-(LEESON UL REC)	
DATE: 1/29/2018	
HZ: NONE	



Motor Load Data									
Load	0%	25%	50%	75%	100%	115%	125%	LR	
Current (Amps)	0.65	0.80	1.00	1.20	1.50	1.60	1.70	11.0	
Torque (ft-lb)	0.00	0.38	0.75	1.10	1.50	1.70	1.90	3.5	
RPM	3600	3570	3550	3525	3500	3490	3480	0	
Efficiency (%)		62.5	75.0	78.0	80.0	80.0	80.0		
P.F. (%)		47.0	67.5	78.0	83.5	86.0	87.0	66.0	

Motor Speed Data						Information Block																					
	LR	Pull-Up	BD	Rated	Idle	HP	Sync. RPM	Frame	Enclosure	Construction	Voltage	Frequency	Design	LR Code letter	Service Factor	Temp Rise @ FL	Duty	Ambient	Elevation	Rotor/Shaft wk <sup>2</sup>	Ref Wdg	Sound Pressure @ 1M	VFD Rating	Outline Dwg	Conn. Diag	Additional Specifications:	
Speed (RPM)	0	1800	2830	3500	3600		3600	143	EPFC	TFR	230/460#190/380	60	B	K	1.15	35	CONT	40 °C	1,000	0.03	Z1270 R14	68	NONE	B-104213LE-681	EET335-LE		
Current (Amps)	11.0	10.0	7.0	1.50	0.65																						
Torque (ft-lb)	3.5	3.2	5.3	1.50	0.00																						

