

# PRODUCT INFORMATION PACKET



Model No: AAN4S2TC61Q10

Catalog No: LM33591

2HP..1800RPM.182TC.TENV.230/460V.3PH.60HZ.CONT.40C.1.15SF.RIGID C-FACE.....INVERTER  
DUTY.....

2000:1 With Encoder Provision



Regal and Leeson are trademarks of Regal Beloit Corporation or one of its affiliated companies.

©2018 Regal Beloit Corporation, All Rights Reserved. MC017097E



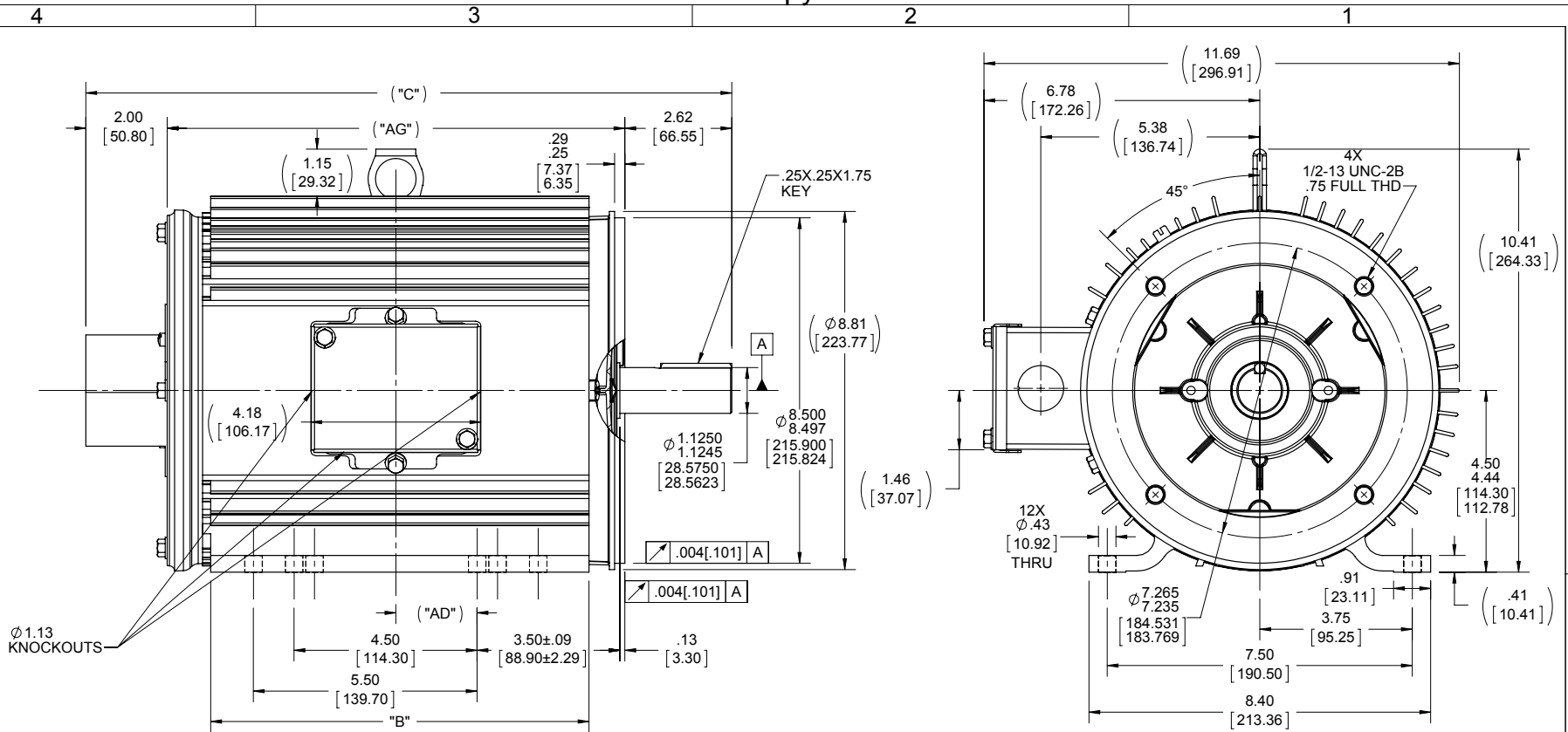


### Nameplate Specifications

Output HP	<b>2 Hp</b>	Output KW	<b>1.5 kW</b>
Frequency	<b>60 Hz</b>	Voltage	<b>230/460 V</b>
Current	<b>8.2/3.3 A</b>	Speed	<b>1770 rpm</b>
Service Factor	<b>1</b>	Phase	<b>3</b>
Efficiency	<b>83.5 %</b>	Duty	<b>Continuous</b>
Insulation Class	<b>F</b>	Design Code	<b>INV</b>
KVA Code	<b>P</b>	Frame	<b>182TC</b>
Enclosure	<b>Totally Enclosed Non Ventilated</b>	Overload Protector	<b>No</b>
Ambient Temperature	<b>40 °C</b>	Drive End Bearing Size	<b>6207</b>
Opp Drive End Bearing Size	<b>6206</b>	UL	<b>Recognized</b>
CSA	<b>Y</b>	CE	<b>Y</b>
IP Code	<b>43</b>		

### Technical Specifications

Electrical Type	<b>Squirrel Cage Inverter Duty</b>	Starting Method	<b>Inverter Only</b>
Poles	<b>4</b>	Rotation	<b>Reversible</b>
Mounting	<b>Rigid base</b>	Motor Orientation	<b>HORIZONTAL</b>
Drive End Bearing	<b>BALL</b>	Opp Drive End Bearing	<b>BALL</b>
Frame Material	<b>Aluminum</b>	Shaft Type	<b>T</b>
Overall Length	<b>15.88 in</b>	Frame Length	<b>9.50 in</b>
Shaft Diameter	<b>1.125 in</b>	Shaft Extension	<b>2.62 in</b>
Assembly/Box Mounting	<b>F1/F2 CAPABLE</b>		
Outline Drawing	<b>036143LN-950</b>	Connection Diagram	<b>0501020LN</b>



950	15.88	2.00	9.3	11.25	12
DASH NO	"C"	"AD"	"B"	"AG"	FOOT HOLES

DRAWING REVISION A		REVISION BY SAJID	DATE 06/05/2015	TOLERANCES UNLESS OTHERWISE SPECIFIED:		DRAWN BY SAJID	
ECO ECO-0068533		APPROVED BY SR	DATE 06/05/2015	DEC.	INCH	mm	ANGLE
ECO DESCRIPTION		NEW DRAWING		.X	±0.1	[±2.5]	±0.5°
<small>COPYRIGHT REGAL BELOIT AMERICA, INC. ALL RIGHTS RESERVED.                  PROPRIETARY AND CONFIDENTIAL INFORMATION - THIS DOCUMENT IS THE PROPERTY OF                  REGAL BELOIT AMERICA, INC. (OWNER) AND CONTAINS OWNER'S PROPRIETARY                  INFORMATION. ANY PERSON, CORPORATION OR OTHER FIRM RECEIVING IT IS DEEMED,                  BY RECEIVING IT, TO AGREE THAT IT, AND/OR ANY PART OF IT, SHALL NOT BE DISCLOSED                  TO ANY PERSON, CORPORATION OR OTHER ENTITY, DUPLICATED, AND/OR USED, EXCEPT                  AS EXPRESSLY APPROVED IN WRITING IN ADVANCE BY OWNER. THIS DOCUMENT SHALL                  BE RETURNED TO OWNER UPON REQUEST. IT MAY BE SUBJECT TO CERTAIN                  RESTRICTIONS UNDER APPLICABLE EXPORT CONTROL LAWS AND REGULATIONS.</small>		REMOVE BURRS & BREAK SHARP EDGES: .003/.015 [.076/.381] X 45° CORNER FILLETS: R.02 [.51] MACHINED SURFACES: .125/3.2 mm SHOWN IN [BRACKETS]		DATE 06/05/2015	APPROVED BY SR	DESCRIPTION OUTLINE TENV-180 AL. FR.	PROCESS/FINISH
REFERENCE 036130	MATERIAL	THIRD ANGLE PROJECTION	SIZE B	DRAWING NUMBER 036143LN	SHEET 1 OF 1		



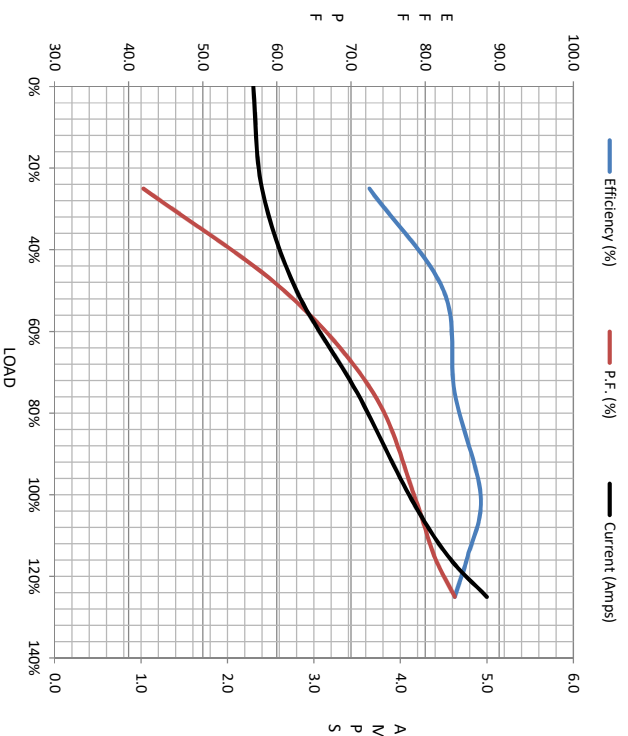
Load	Motor Load Data						LR
	0%	25%	50%	75%	100%	115%	
Current (Amps)	2.30	2.40	2.80	3.5	4.1	4.6	46.0
Torque (ft-lb)	0.00	2.20	4.4	6.7	9.0	10.2	34.0
RPM	1800	1790	1780	1755	1755	1751	0
P.F. (%)	10.5	72.5	82.5	84.0	87.5	85.8	84.0
		42.0	61.0	73.0	78.5	81.3	84.0
							60.5

Motor Speed Data

	LR	Pull-Up	BD	Rated	Idle
Speed (RPM)	0	130	1318	1755	1800
Current (Amps)	46.0	46.9	31.8	4.1	2.30
Torque (ft-lb)	34.0	34.0	49.3	9.0	0.00

Information Block

HP	3.0			
Sync. RPM	1800			
Frame	182			
Enclosure	TENV			
Construction	TTL			
Voltage	230/460 V			
Frequency	60 Hz			
Design	A			
LR Code letter	N			
Service Factor	1.15			
Temp Rise @ FL	75 °C			
Duty	CONT			
Ambient	40 °C			
Elevation	1,000 feet			
Rotor/Shaft wk <sup>2</sup>	0.42 LB-Ft <sup>2</sup>			
Ref Wdg	T84180 NONE			
Sound Pressure @ 1M	62 dBA			
VFD Rating	CONSTANT 100:1			
Outline Dwg	036143LN-950			
Conn. Diag	0501020LN			
Additional Specifications:				
0				
EQUIV CKT (OHMS / PHASE)				
R1	R2	X1	X2	Xm
1.5/80	1.8020	2.8380	2.0910	94.1300



Speed - Torque Curve

