

# PRODUCT INFORMATION PACKET



Model No: AAN6S3TC61Q10  
Catalog No: LM06121  
3,1200,TENV,215TC,3/60/230/460  
2000:1 With Encoder Provision



Regal and Leeson are trademarks of Regal Beloit Corporation or one of its affiliated companies.  
©2018 Regal Beloit Corporation, All Rights Reserved. MC017097E



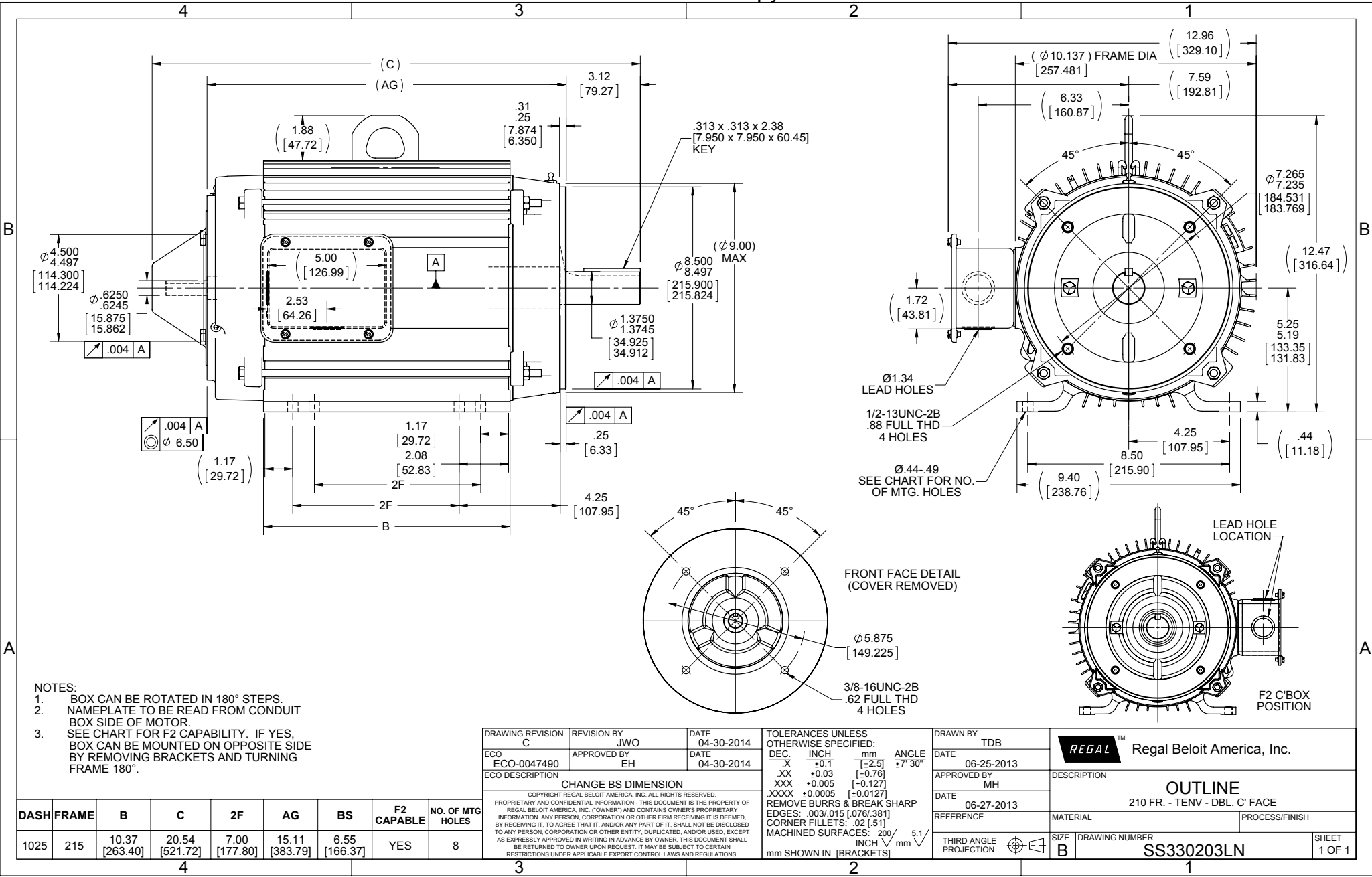


### Nameplate Specifications

Output HP	<b>3 Hp</b>	Output KW	<b>2.2 kW</b>
Frequency	<b>60 Hz</b>	Voltage	<b>230/460 V</b>
Current	<b>12.2/6.1 A</b>	Speed	<b>1178 rpm</b>
Service Factor	<b>1</b>	Phase	<b>3</b>
Efficiency	<b>82.5 %</b>	Duty	<b>Continuous</b>
Insulation Class	<b>F</b>	Design Code	<b>INV</b>
KVA Code	<b>S</b>	Frame	<b>215TC</b>
Enclosure	<b>Totally Enclosed Non Ventilated</b>	Overload Protector	<b>No</b>
Ambient Temperature	<b>40 °C</b>	Drive End Bearing Size	<b>6309</b>
Opp Drive End Bearing Size	<b>6206</b>	UL	<b>Recognized</b>
CSA	<b>Y</b>	CE	<b>Y</b>
IP Code	<b>43</b>		

### Technical Specifications

Electrical Type	<b>Squirrel Cage Inverter Duty</b>	Starting Method	<b>Inverter Only</b>
Poles	<b>6</b>	Rotation	<b>Reversible</b>
Mounting	<b>Rigid base</b>	Motor Orientation	<b>HORIZONTAL</b>
Drive End Bearing	<b>BALL</b>	Opp Drive End Bearing	<b>BALL</b>
Frame Material	<b>Aluminum</b>	Shaft Type	<b>T</b>
Overall Length	<b>20.54 in</b>	Frame Length	<b>10.25 in</b>
Shaft Diameter	<b>1.375 in</b>	Shaft Extension	<b>3.38 in</b>
Assembly/Box Mounting	<b>F1/F2 CAPABLE</b>		
Outline Drawing	<b>B-SS330203LN-1025</b>	Connection Diagram	<b>A-EE7308T-LN</b>



- NOTES:
1. BOX CAN BE ROTATED IN 180° STEPS.
  2. NAMEPLATE TO BE READ FROM CONDUIT BOX SIDE OF MOTOR.
  3. SEE CHART FOR F2 CAPABILITY. IF YES, BOX CAN BE MOUNTED ON OPPOSITE SIDE BY REMOVING BRACKETS AND TURNING FRAME 180°.

DASH	FRAME	B	C	2F	AG	BS	F2 CAPABLE	NO. OF MTD HOLES
1025	215	10.37 [263.40]	20.54 [521.72]	7.00 [177.80]	15.11 [383.79]	6.55 [166.37]	YES	8

DRAWING REVISION	REVISION BY	DATE
C	JWO	04-30-2014
ECO-0047490	APPROVED BY EH	DATE 04-30-2014
ECO DESCRIPTION		
CHANGE BS DIMENSION		

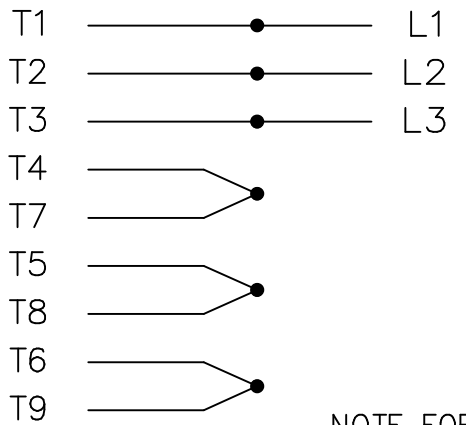
COPYRIGHT REGAL BELOIT AMERICA, INC. ALL RIGHTS RESERVED. PROPRIETARY AND CONFIDENTIAL INFORMATION - THIS DOCUMENT IS THE PROPERTY OF REGAL BELOIT AMERICA, INC. (OWNER) AND CONTAINS OWNER'S PROPRIETARY INFORMATION. ANY PERSON, CORPORATION OR OTHER FIRM RECEIVING IT IS DEEMED, BY RECEIVING IT, TO AGREE THAT IT, AND/OR ANY PART OF IT, SHALL NOT BE DISCLOSED TO ANY PERSON, CORPORATION OR OTHER ENTITY, DUPLICATED, AND/OR USED, EXCEPT AS EXPRESSLY APPROVED IN WRITING IN ADVANCE BY OWNER. THIS DOCUMENT SHALL BE RETURNED TO OWNER UPON REQUEST. IT MAY BE SUBJECT TO CERTAIN RESTRICTIONS UNDER APPLICABLE EXPORT CONTROL LAWS AND REGULATIONS.

TOLERANCES UNLESS OTHERWISE SPECIFIED:
DEC. INCH mm ANGLE
.X ±0.1 [±2.5] ±7° 30'
.XX ±0.03 [±0.76]
.XXX ±0.005 [±0.127]
.XXXX ±0.0005 [±0.0127]
REMOVE BURRS & BREAK SHARP EDGES: .003/.015 [0.076/.381] CORNER FILLETS: .02 [51] MACHINED SURFACES: 200 INCH 5.1 mm SHOWN IN [BRACKETS]

DRAWN BY	TDB	DATE	06-25-2013	APPROVED BY	MH	DATE	06-27-2013	REFERENCE		THIRD ANGLE PROJECTION		SIZE	B	DRAWING NUMBER	SS330203LN	SHEET	1 OF 1
Regal Beloit America, Inc.		DESCRIPTION						OUTLINE		210 FR. - TENV - DBL. C' FACE		MATERIAL		PROCESS/FINISH			
		DRAWING NUMBER		SS330203LN		SIZE		B		SHEET		1 OF 1					

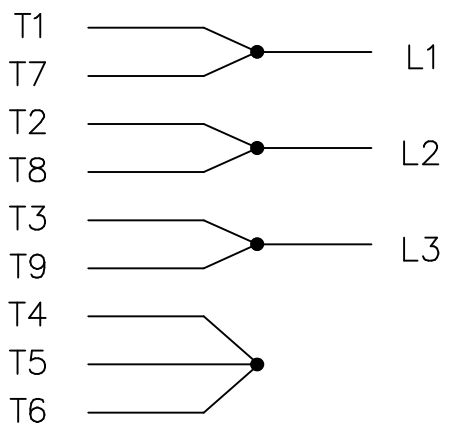
THREE PHASE  
DUAL VOLTAGE MOTOR

HIGH VOLTAGE

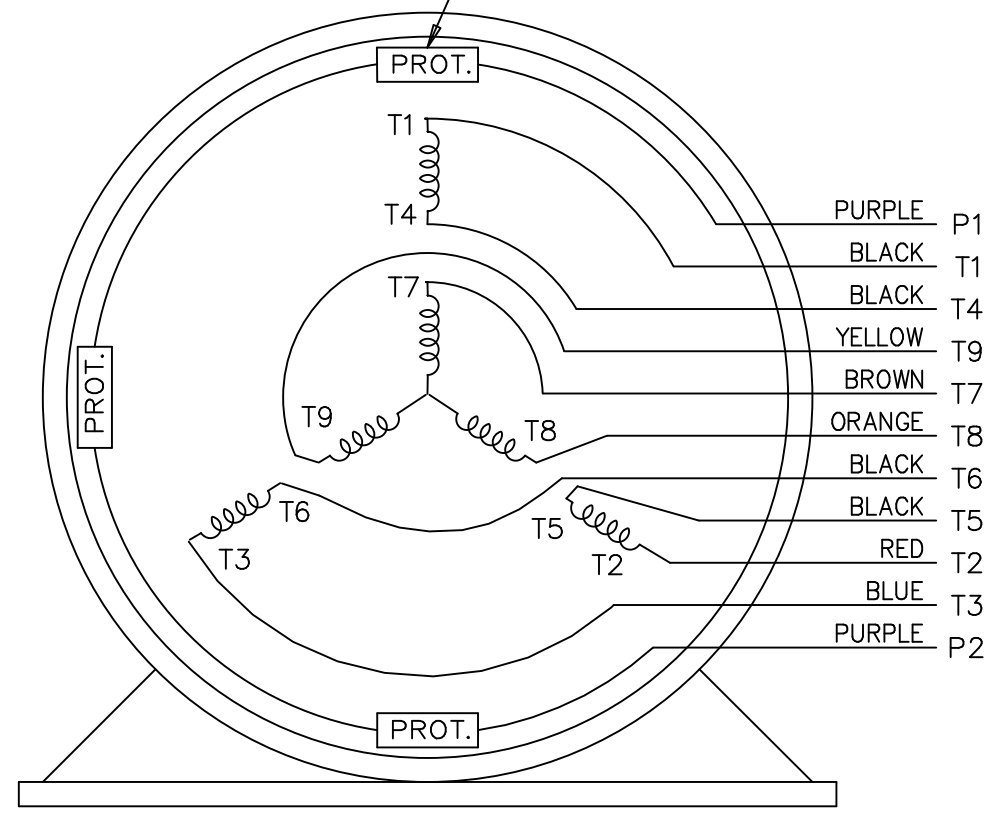


NOTE FOR FACTORY USE ONLY:  
TO SURGE TEST FOR COMMON CONNECT:  
HIGH VOLT: CONNECT P1 TO T1  
THEN P2 TO L1  
LOW VOLT: CONNECT P1 TO T1 & T7,  
THEN P2 TO L1

LOW VOLTAGE



THREMO-PROTECTORS  
CONNECTED IN SERIES.



VIEW OF TERMINAL END

				TOLERANCES UNLESS SPECIFIED			DRAWN BJK 07-16-2002					
				DEC.	INCHES		CHK DRS 07-18-2002					
				.X	±.1		APPD GK 07-18-2002					
					.XX	±.02	SCALE 1=1					
2	ADDED COLORS TO "T & P" LEADS	CN 40494	MSG 08-08-2006	ML	.XXX	±.005	TITLE CONNECTION DIAGRAM 3 PHASE - DUAL VOLTAGE MOTOR					
1	NEW DRAWING		BJK 07-18-2002	DRS	.XXXX	±.0005	MAT'L.					
NO.	REVISION	BY & DATE	CHK	ANG	±7'30"		PREV					
THIS DRAWING IN DESIGN AND DETAIL IS OUR PROPERTY AND MUST NOT BE USED EXCEPT IN CONNECTION WITH OUR WORK ALL RIGHTS OF DESIGN AND INVENTION ARE RESERVED THIS IS AN ELECTRONICALLY GENERATED DOCUMENT - DO NOT SCALE THIS PRINT				RFP	CAD FILE ee7308t_ln			SIZE	DRAWING NO.	PAGE	OF	REV.
				DIST	LB			A	EE7308T-LN			2



CERTIFICATION DATA SHEET

2100 WASHINGTON ST.  
 GRAFTON, WI  
 PH. 262-277-8810

CONN. DIAGRAM: A-EE7308T-LN

OUTLINE: B-SS330203LN-1025

CATALOG # : LM06121

WINDING #: K2156126 R3 6

MOUNTING: F1/F2 CAPABLE

TYPICAL MOTOR PERFORMANCE DATA

HP	KW	SYNC. RPM	F.L. RPM	FRAME	ENCLOSURE	KVA CODE	DESIGN	
3	2.24	1200	1178	215TC	TENV	S	INV	
PH	HZ	VOLTS	AMPS	START TYPE	DUTY	INSL	S.F.	AMB °C
3	60	230/460	12.2/6.1	INVERTER ONLY	CONTINUOUS	F3	1.0	40

<b>FULL LOAD EFF:</b>	82.5	<b>3/4 LOAD EFF:</b>	78.5	<b>1/2 LOAD EFF:</b>	75.5	<b>GTD. EFF</b>		<b>ELEC. TYPE</b>
<b>FULL LOAD PF:</b>	55	<b>3/4 LOAD PF:</b>	47.5	<b>1/2 LOAD PF:</b>	36	80		<b>SQ CAGE INV DUTY</b>

F.L. TORQUE	LOCKED ROTOR AMPS	L.R. TORQUE	B.D. TORQUE	F.L. RISE °C
13.4 LB-FT	125 / 62.5	69.5 LB-FT	519 %	87 LB-FT 649 %
				0

SOUND PRESSURE @ 3 FT.	SOUND POWER	ROTOR WK^2	MAX. WK^2	SAFE STALL TIME	STARTS / HOUR	APPROX. MOTOR WGT
60 DBA	70 DBA	0.95 LB-FT^2	- LB-FT^2	- SEC.	-	155 LBS.

\*\*\* SUPPLEMENTAL INFORMATION \*\*\*

DE BRACKET TYPE	ODE BRACKET TYPE	MOUNT TYPE	ORIENTATION	SEVERE DUTY	HAZARDOUS LOCATION	DRIP COVER	SCREENS	PAINT
C-FACE	ENCODER	RIGID	HORIZONTAL	FALSE	NONE	FALSE	NONE	GRAY - LINCOLN

BEARINGS		GREASE	SHAFT TYPE	SPECIAL DE	SPECIAL ODE	SHAFT MATERIAL	FRAME MATERIAL
DE	ODE						
BALL	BALL	POLYREX EM	T	NONE	NONE	1045 HOT ROLLED (C-204)	ALUMINUM
6309	6206						

THERMO-PROTECTORS							
THERMOSTATS	PROTECTORS	WDG RTDS	BRG RTDS	THERMISTORS	CONTROL	SPACE HEATERS	VOLTS
TSTATS (N/C)	NOT	NONE	NONE	NONE	FALSE	NONE	

**INVERTER TORQUE:** CONSTANT 2000:1  
**INV. HP SPEED RANGE:** NONE

**ENCODER:** PROVISIONS ONLY  
 DYNAPAR HS35  
 NONE NONE PPR

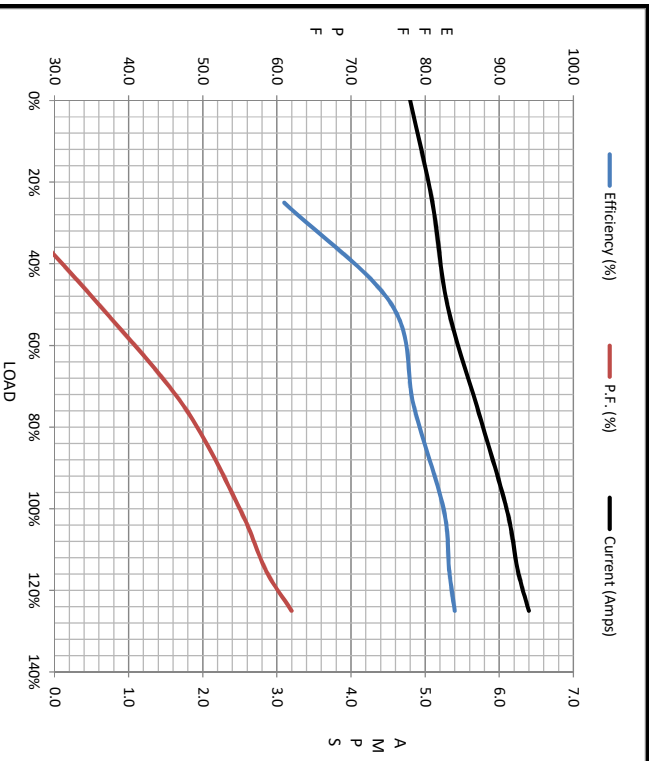
**BRAKE:** NONE NONE  
 NONE P/N NONE  
 NONE NONE  
 FT-LB NONE V NONE HZ

\*  
 N  
 O  
 T  
 E  
 S  
 \*



Motor Load Data									
Load	0%	25%	50%	75%	100%	115%	125%	LR	
Current (Amps)	4.8	5.1	5.3	5.7	6.1	6.3	6.4	62.5	
Torque (ft-lb)	0.00	3.3	6.6	10.0	13.4	15.2	17.0	69.5	
HPM	1200	1194	1188	1184	1178	1176	1172	0	
Efficiency (%)		61.0	75.5	78.5	82.5	83.3	84.0		
P.F. (%)	9.0	23.5	36.0	47.5	55.0	58.5	62.0	47.0	

Motor Speed Data						Information Block																						
	LR	Pull-Up	BD	Rated	Idle	HP	Sync. RPM	Frame	Enclosure	Construction	Voltage	Frequency	Design	LR Code letter	Service Factor	Temp Rise @ FL	Duty	Ambient	Elevation	Rotor/Shaft wk²	Ref Wdg	Sound Pressure @ 1M	VFD Rating	Outline Dwg	Conn. Diag	Additional Specifications:		
Speed (RPM)	0	589	950	1178	1200	3.0	1200	215	TENV	TTL	230/460	60	A	S	1.15	0	CONT	40 °C	1,000	0.95	LB-Fk	60	dB(A)	CONSTANT 2000:1	B-SS30203LN-1025	A-EE7308T-LN		
Current (Amps)	62.5	56.3	40.0	6.1	4.8																							
Torque (ft-lb)	69.5	59.1	87.0	13.4	0.00																							



EQUIV CKT (OHMS / PHASE)			
R1	R2	X1	Xm
1.1350	1.2490	3.7080	2.5790 51.5570

