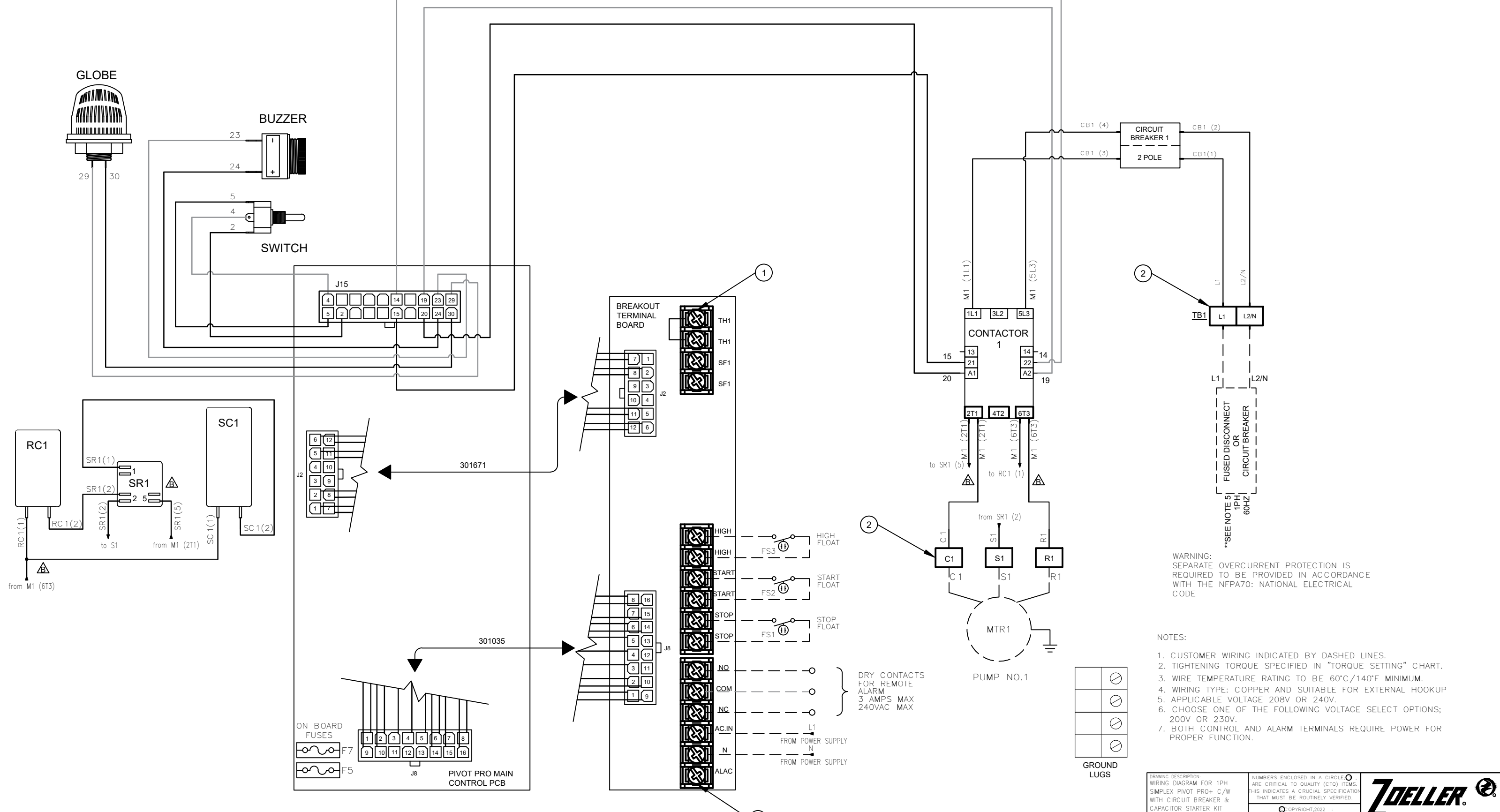


DRAWING REVISIONS				
LTR	BY	DATE	ECO #	DESCRIPTION
A	PY	06/21/22	11503	RELEASE
B	PY	11/17/22	11554	WIRING UPDATED

CUSTOMER TORQUE SETTING		
NUMBER	COMPONENT	TORQUE
1	BREAKOUT TERMINAL BOARD	0.82 N.m. 7.3 lb-in
2	TERMINAL BLOCK 6mm ² -CROSS SECTION	1.5-1.8 N.m. 13.3-15.9 lb-in



WARNING:
SEPARATE OVERCURRENT PROTECTION IS
REQUIRED TO BE PROVIDED IN ACCORDANCE
WITH THE NFPA70: NATIONAL ELECTRICAL
CODE

- NOTES:
1. CUSTOMER WIRING INDICATED BY DASHED LINES.
 2. TIGHTENING TORQUE SPECIFIED IN "TORQUE SETTING" CHART.
 3. WIRE TEMPERATURE RATING TO BE 60°C/140°F MINIMUM.
 4. WIRING TYPE: COPPER AND SUITABLE FOR EXTERNAL HOOKUP
 5. APPLICABLE VOLTAGE 208V OR 240V.
 6. CHOOSE ONE OF THE FOLLOWING VOLTAGE SELECT OPTIONS; 200V OR 230V.
 7. BOTH CONTROL AND ALARM TERMINALS REQUIRE POWER FOR PROPER FUNCTION.

NOTICE: THESE ARE INFORMATIONAL SCHEMATICS ONLY. THEY DO NOT REPLACE PROFESSIONAL GUIDANCE WITHIN ANY JURISDICTION OR FOR ANY APPLICATION AN SHOULD NOT BE RELIED UPON TO DO SO

DRAWING DESCRIPTION: WIRING DIAGRAM FOR 1PH SIMPLEX PIVOT PRO+ C/W WITH CIRCUIT BREAKER & CAPACITOR STARTER KIT		NUMBERS ENCLOSED IN A CIRCLE ○ ARE CRITICAL TO QUALITY (CTQ) ITEMS. THIS INDICATES A CRUCIAL SPECIFICATION THAT MUST BE ROUTINELY VERIFIED.		ZOELLER PUMP COMPANY
TOLERANCES: X ±.1 XX ±.05 XXX ±.010		ELECTRONIC SCALE: 1X DO NOT SCALE PRINT EXCEPT AS NOTED DIMENSIONS ARE IN INCHES.		
DRAFTER: PRAPISSORN Y.		DATE: 06/17/22		PART NUMBER: 304333 PART REVISION: A DRAWING NUMBER: 304333 SHEET: 1 OF 2

