

# BALDOR® • RELIANCE

## Product Information Packet

# BSM50N-333AA

## BSM50N-333AA (NEO) T'STAT, RESOLVER

Specs			
Enclosure:	TENV		
Nameplate Speed:	4000		
Agency Approvals:	CE		
	CSA		
	TUV		
	UR		
	WEEE		
Base Indicator:	Bracket Mounted		
Dimensional Drawing Numbers:	S5LYP037		
Frame Material:	Exposed Laminations		

<b>Motor Lead Quantity/Wire Size:</b>	3 @ 18 AWG		
<b>Mounting Arrangement:</b>	F1		
<b>Nameplate Output:</b>	0.51KW		
<b>Shaft Rotation:</b>	Reversible		
<b>Motor Standards:</b>	Other		

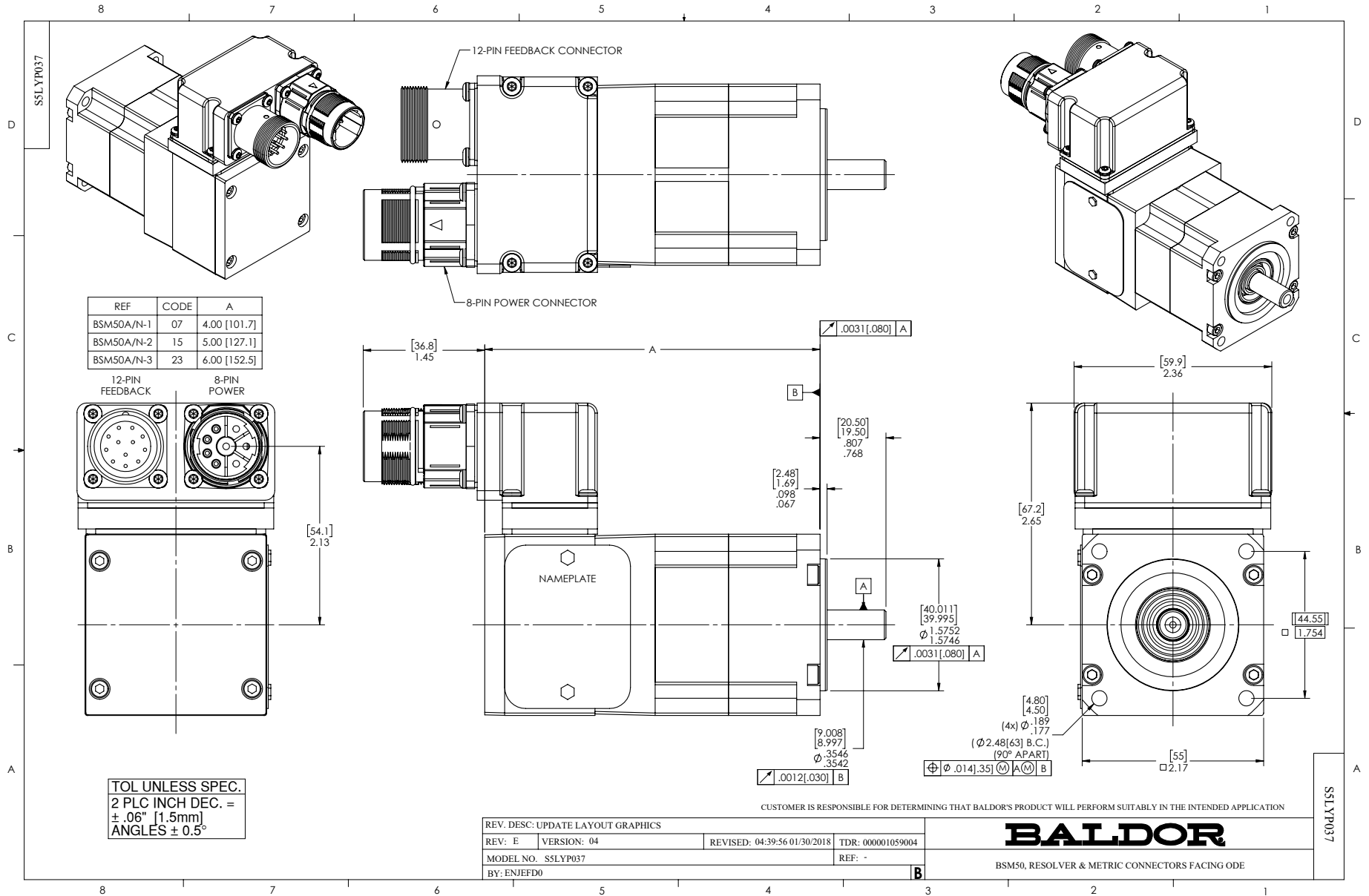
<b>Nameplate NP2859L</b>	
<b>CAT.NO.</b>	BSM50N-333AA
<b>BLANK</b>	
<b>SPEC.</b>	S5P037W021
<b>MFG.NO.</b>	
<b>TORQ CONT STALL</b>	1.36 NM
<b>CUR CONT STALL/A RMS</b>	4.56
<b>POWER</b>	0.51KW
<b>RATED SPEED/RPM</b>	4000
<b>RATED BUS VOLTS</b>	160
<b>PEAK CUR/A RMS</b>	15
<b>MAX MECH SPEED</b>	10000
<b>CLASS</b>	F
<b>AMB.</b>	25
<b>APRV-CE</b>	

Parts List		
Part Number	Description	Quantity
SA046444	SA S5P037W021	1.000 EA
RA041770	RA S5P037W021	1.000 EA
WD1000A33	62307-2 AMP TERM,30K/REELREPLACING A19)3	4.000 EA
RM1020A26	O-RING, -032 BUNA-N, .070 CS X 1.864 ID	1.000 EA
MJ5004A05	#242-21 LOCTITE GENERAL PURPOSE MED. STR	0.001 EA
HW5000A38	RETAINING RING .875 INTERNAL N5000-87	1.000 EA
HW5109A06	WASHER, WAVE SPRING FOR 22MM BORE SMALLE	1.000 EA
HA2113A03	TOLERANCE RING 8MM X 7MM TYPE BN8X7C	1.000 EA
S5EP3100A09	ENDPLATE,FR BRG,BSM50,W/ SPL RESOLVER PO	1.000 EA
84YN0030J030	SCREW SOCKET HD M3 X 30MM LONG	4.000 EA
HW1021A03	WASHER, M3 SPLIT LOCK	4.000 EA
84YN0030J010	SCREW SOCKET HD M3 X 10MM LG	3.000 EA
HW1020A03	WASHER, FLAT 3MM	3.000 EA
HW1021A03	WASHER, M3 SPLIT LOCK	3.000 EA
MH4006A21	HEAT SHRINK TUBING 0.12 ID BLACK	0.542 FT
RM1020A26	O-RING, -032 BUNA-N, .070 CS X 1.864 ID	1.000 EA
84YN0030J010	SCREW SOCKET HD M3 X 10MM LG	4.000 EA
HW1021A03	WASHER, M3 SPLIT LOCK	4.000 EA
HA6631	ADAPTOR, BSM50, CONDUIT BOX MTG. PLATE	1.000 EA
GS0040A01	GASKET, BSM50 STRAIN RELIEF ADAPTOR	1.000 EA
84YN0030J010	SCREW SOCKET HD M3 X 10MM LG	4.000 EA
HW1021A03	WASHER, M3 SPLIT LOCK	4.000 EA
S1CB3000A02	90 DEG ADAPTOR, METRIC CONNECTORS F/BSM	1.000 EA
S1GS1000	GASKET, 90 DEG ADAPTOR F/BSM MTRS	1.000 EA

Parts List (continued)		
Part Number	Description	Quantity
GS1000A25	GASKET, METRIC CONNECTOR(CLOTH INSERTED	1.000 EA
99XM0356A02	STICK SCREW, #3-56 X .125 LG. HEX (MARK	2.000 EA
MJ5004A02	P-2 FRANKLIN RESIN KIT	0.001 GA
MJ5004A03	S-C FRANKLIN ACTIVATOR	0.001 QT
MJ5004A27	RP 4005 RESIN, FOR ROTOR FIBERGLASS WIND	0.001 EA
MJ5004A28	REN 1500H HARDENER, FOR ROTOR FIBERGLASS	0.001 GA
ME3001A02	449S2 FIBERGLASS 20 END ROVING AA-750	0.003 LB
MG2000A17	RUST INHIBITOR PART # SRPO #20	0.001 GA
BG6900C03	6900 D.SH,C3,POLYREX EM	1.000 EA
LD2200A08	CUT LEAD GREEN&YELLOW #18 8 INCH W/ RIN	1.000 EA
RF0001	RESOLVER, BRUSHLESS, 1 SPEED, 1.4165 DIA	1.000 EA
CB0006A06	COVER, FEEDBACK BSM50 (1/16" SHORTER)	1.000 EA
WD1455A01	CONNECTOR, FEEDBACK, M23 THDS, 12 PIN	1.000 EA
WD1649A10	1MM PIN CONTACT, TYCO#66507-4 (24-28AWG)	6.000 EA
WD5009A15	KIT-M23 MOTOR POWER CONN, 8-PIN	1.000 EA
62YW0025A007	EPOXY LOCK SCREW,M2.5X7 TORX PAN HD TAPT	12.000 EA
MG1025L02	WILKOFAS, 776.06 TEXTURE (BSM) BLACK	0.001 QT
MG1025Z09	CATALYST #060.06 WILCO	0.001 QT
MG1500Y08	PRIMER-WILKOPON (603.08A)YELLOW PRIMER W	0.001 QT
MG1025Z08	WILKO 603.08B PRIMER REDUCER TDR# 72361	0.001 QT
MJ5004A05	#242-21 LOCTITE GENERAL PURPOSE MED. STR	0.001 EA
NP2859L	NAMEPLATE BSM50/63 ALUM, LASER ETCHED	1.000 EA
25PA1008	PKG GRP, BSM 50, 63, & 80	1.000 EA
MS1240	BSM Motor Quick Start 1/16	1.000 EA

LB1534	MYLAR CE WARNING LABEL FOR SERVO MOTORS	1.000 EA
--------	---	----------

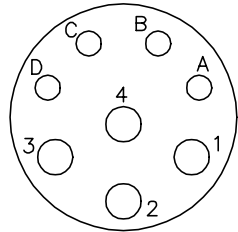
No performance data has been  
assigned to this product.





CD1321

8 PIN THREADED CONNECTOR  
(CRIMP STYLE)  
(INSERTION SIDE)

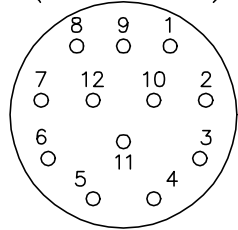


MOTOR CONNECTIONS

PIN	FUNCTION	INTERNAL/EXTERNAL MARKINGS
A	THERMAL SWITCH	YELLOW
B	THERMAL SWITCH	YELLOW
C	BRAKE (OPTIONAL)	BLACK (* RED)
D	BRAKE (OPTIONAL)	BLACK
1	U	BLACK OR T1
2	GROUND	GREEN
3	W	BLUE OR T3
4	V	RED OR T2

\* WHEN REQUIRED

12 PIN THREADED CONNECTOR  
(CRIMP STYLE)  
(INSERTION SIDE)



RESOLVER CONNECTIONS

PIN	FUNCTION	INTERNAL WIRE COLOR
1	REF HI R1	RED/WHITE
2	REF LO R2	YELLOW/WHITE
3	COS+ S1	RED
4	COS- S3	BLACK
5	SINE+ S2	BLUE
6	SINE- S4	YELLOW

REV. DESC: CORRECT POWER PHASES

REV. LTR: D BY: FN REVISED: 08:52:29 01/27/2004 TDR: 323175

1ZQ1Q0

FILE: AAA00055309

REF: CD1321

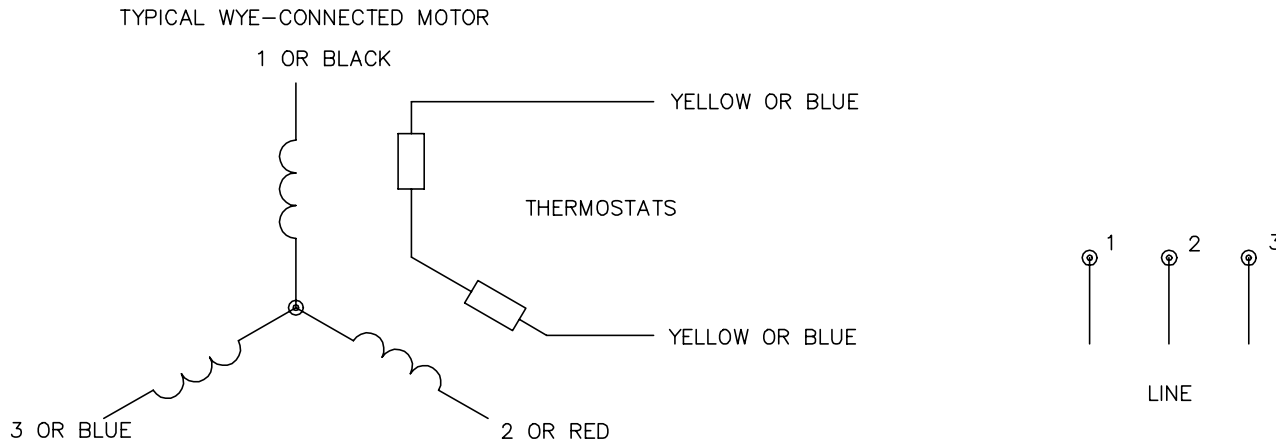
MTL: -

**BALDOR ELECTRIC Co.**

BSM WIRING DIAG, POWER & RESOLVER, 8 & 12 PIN THD CONNECT.

CD1321

CD0006A02



NOTES:

1. INTERCHANGE ANY TWO LINE LEADS TO REVERSE ROTATION.
2. ACTUAL NUMBER OF INTERNAL PARALLEL CIRCUITS MAY VARY.

REV. DESC: REMOVED "OPTIONAL" FROM PRINT, SERVO REQ'S T'STATS			
REV. LTR: D	VERSION: 03	TDR: 000000414937	
Z0V9000003 CD0006A02	FILE: \AAA\00068\606	REVISED: 10:02:28 11/21/2006	
	MTL: -	BY: ENJFDO	

**BALDOR ELECTRIC Co.**

3PH, SV, 3 LEADS, WYE CONNECTED

CD0006A02