

# PRODUCT INFORMATION PACKET



Model No: C143T11FC1H

Catalog No: 120097.00

3/4HP..1140RPM.143.TEFC.208-230/460V.3PH.60HZ.CONT.NOT.40C.1.15SF.ROUND.GENERAL  
PURPOSE.C143T11FC1H

Totally Enclosed Fan Cooled (TEFC)



Regal and Leeson are trademarks of Regal Beloit Corporation or one of its affiliated companies.

©2018 Regal Beloit Corporation, All Rights Reserved. MC017097E



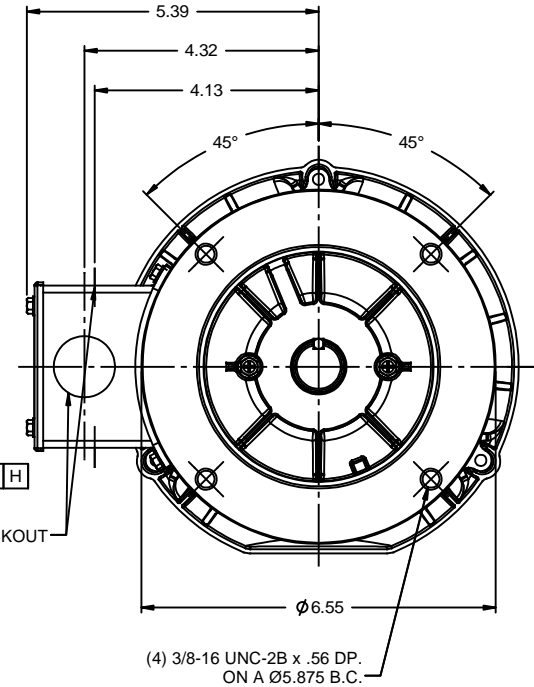
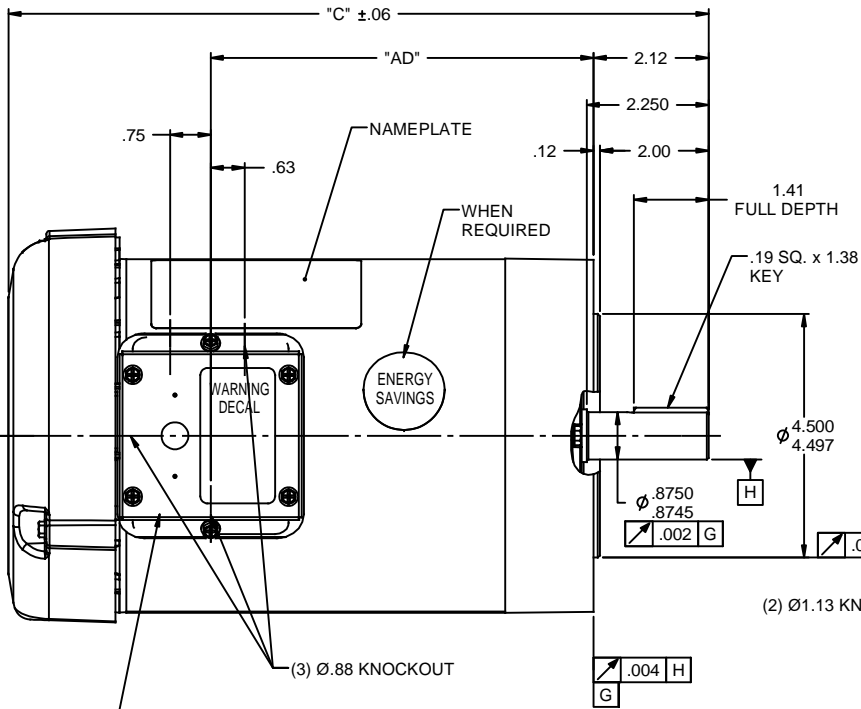
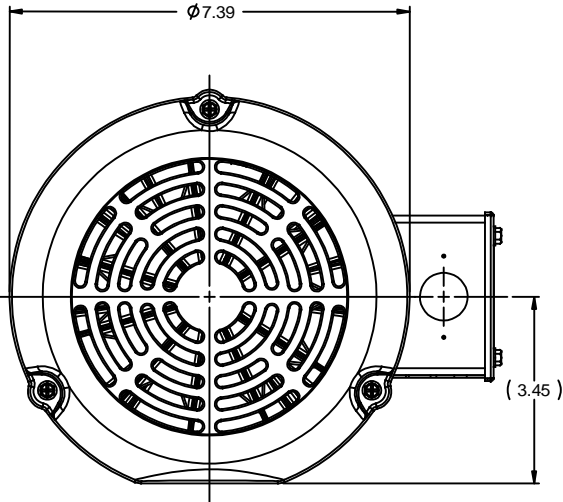
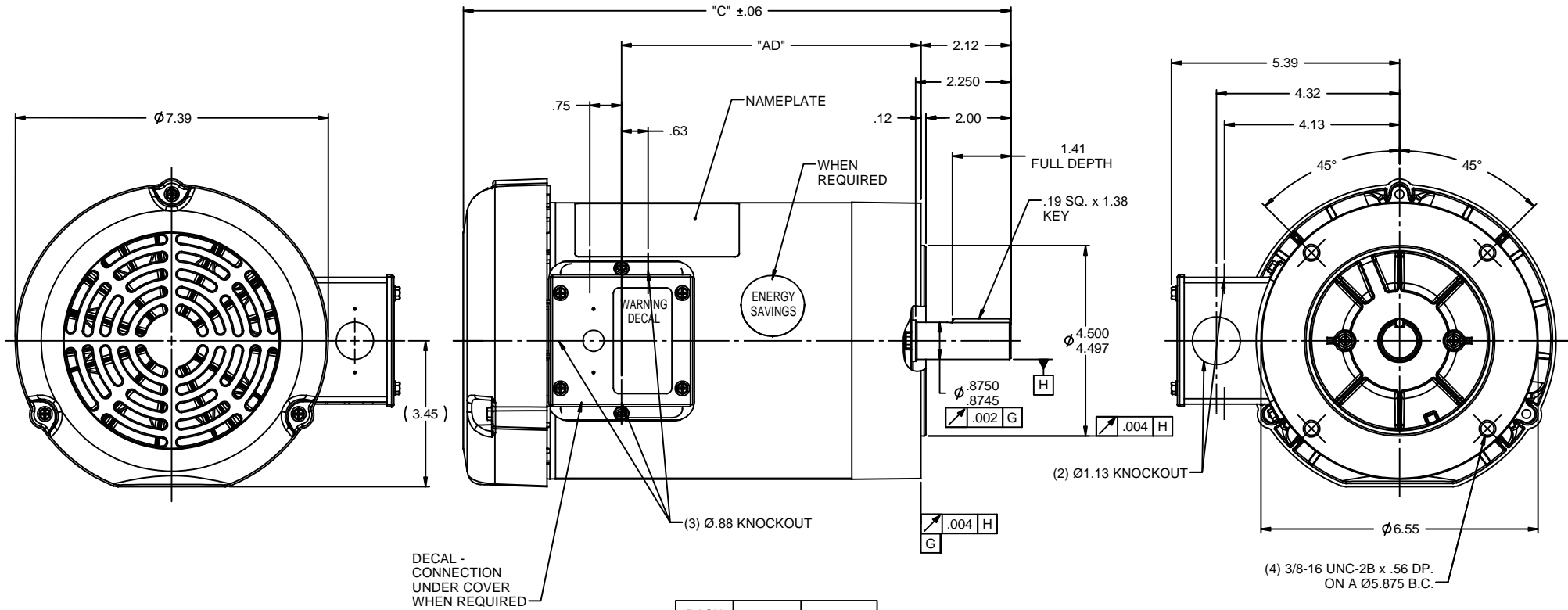


### Nameplate Specifications

Output HP	<b>0.75 Hp</b>	Output KW	<b>0.56 kW</b>
Frequency	<b>60 Hz</b>	Voltage	<b>208-230/460 V</b>
Current	<b>3.0-3.0/1.5 A</b>	Speed	<b>1140 rpm</b>
Service Factor	<b>1.15</b>	Phase	<b>3</b>
Efficiency	<b>75.5 %</b>	Duty	<b>Continuous</b>
Insulation Class	<b>B</b>	Design Code	<b>B</b>
KVA Code	<b>J</b>	Frame	<b>143TC</b>
Enclosure	<b>Totally Enclosed Fan Cooled</b>	Overload Protector	<b>No</b>
Ambient Temperature	<b>40 °C</b>	Drive End Bearing Size	<b>6205</b>
Opp Drive End Bearing Size	<b>6203</b>	UL	<b>Recognized</b>
CSA	<b>Y</b>	CE	<b>N</b>
IP Code	<b>43</b>		

### Technical Specifications

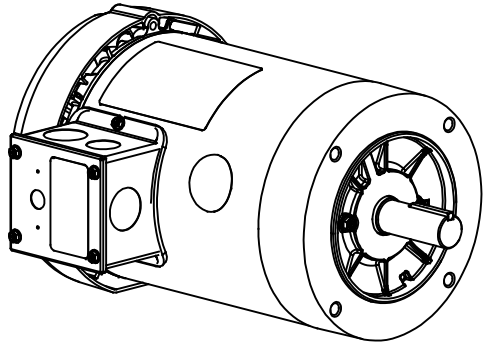
Electrical Type	<b>Squirrel Cage Induction Run</b>	Starting Method	<b>Across The Line</b>
Poles	<b>6</b>	Rotation	<b>Reversible</b>
Mounting	<b>Round</b>	Motor Orientation	<b>HORIZONTAL</b>
Drive End Bearing	<b>BALL</b>	Opp Drive End Bearing	<b>BALL</b>
Frame Material	<b>Rolled Steel</b>	Shaft Type	<b>T</b>
Overall Length	<b>11.92 in</b>	Frame Length	<b>6.00 in</b>
Shaft Diameter	<b>0.875 in</b>	Shaft Extension	<b>2.25 in</b>
Assembly/Box Mounting	<b>F1 ONLY</b>		
Outline Drawing	<b>028777-600</b>	Connection Diagram	<b>005010.01</b>



DECAL - CONNECTION UNDER COVER WHEN REQUIRED

DASH NO.	"C"	"AD"
550	11.42	5.56
600	11.92	6.06
650	12.42	6.56
675	12.67	6.81
700	12.92	7.06
750	13.42	7.56
800	13.92	8.06

NOTE:  
1) GASKETS THROUGHOUT



REVISION			BY & DATE	CHK	ANG	±1/2°	FINISH	GENERAL PURPOSE	PAGE	OF
05	ADDED FAN GUARD DIMENSIONS PER SALES	PG	1/5/2011	DEC						
04	ADDED DASH NO. 675	PG	5/21/2010	X						
03	ADDED ENERGY SAVINGS DECAL	PG	5/19/2010	.XX						
02	ADD "C" DIM. PER ISAAC 09-4157	LST	10/1/2009	.XXX						
01	REVISED GD&T POSITIONING & CALLOUT	KMM	8/27/07	.XXX						
TOLERANCES UNLESS SPECIFIED				INCHES						
TITLE				OUTLINE - 140TC FRAME						
REF				TEFC - "C" FACE						
MATL										
RFP				PREV						
NETWORK FILE NAME				028777						
DRAWING NO				B						
REV				05						



ELECTRIC MOTORS  
GEARMOTORS  
AND DRIVES

DRAWN KMM 08/02/07

CHK

APPR

SCALE 7:16

REF 028504.00

FMF 120038.00

PAGE OF



005010-01

VIEW FROM OUTSIDE OF MOTOR AT SWITCH END.



VOLTAGE	L1	L2	L3	JOIN & INSULATE
HIGH	T1	T2	T3	(T4,T7) (T5,T8) (T6,T9)
LOW	T1,T7	T2,T8	T3,T9	T4,T5,T6

				TOLERANCES UNLESS SPECIFIED		<b>REGAL</b> ™ <b>Regal Beloit America, Inc.</b>		DRAWN RDW 04/12/02		
				DEC.	INCHES			CHK		
				.X	±.1	TITLE EXTERNAL WIRING DIAGRAM 3 PHASE W/O PROTECTOR		APPD		
				.XX	±.01			SCALE 1=1		
				.XXX	±.005			REF FIG.2-51		
A	UPDATED TO REGAL LOGO	SAJ 06/26/15	AJY .XXXX ±.0005	MAT'L	DECAL - 004014			FMF		
NO.	REVISION	BY & DATE	CHK ANG ±1/2"	FINISH				PREV		
THIS DRAWING IN DESIGN AND DETAIL IS OUR PROPERTY AND MUST NOT BE USED EXCEPT IN CONNECTION WITH OUR WORK ALL RIGHTS OF DESIGN AND INVENTION ARE RESERVED THIS IS AN ELECTRONICALLY GENERATED DOCUMENT - DO NOT SCALE THIS PRINT				RFP	04/12/02	CAD FILE	00501001	SIZE A	DRAWING NO. 005010-01	REV. A
				DIST	BRF-NLV					

