

PRODUCT INFORMATION PACKET



Model No: C184T11FB24A

Catalog No: 132246.00

..2HP..1170RPM.184TZ.TEFC.208-230/460V.3PH.60HZ.CONT.40C.1.5SF.RIGID.C184T11FB24A.....

Feather Picker



Regal and Leeson are trademarks of Regal Beloit Corporation or one of its affiliated companies.

©2018 Regal Beloit Corporation, All Rights Reserved. MC017097E



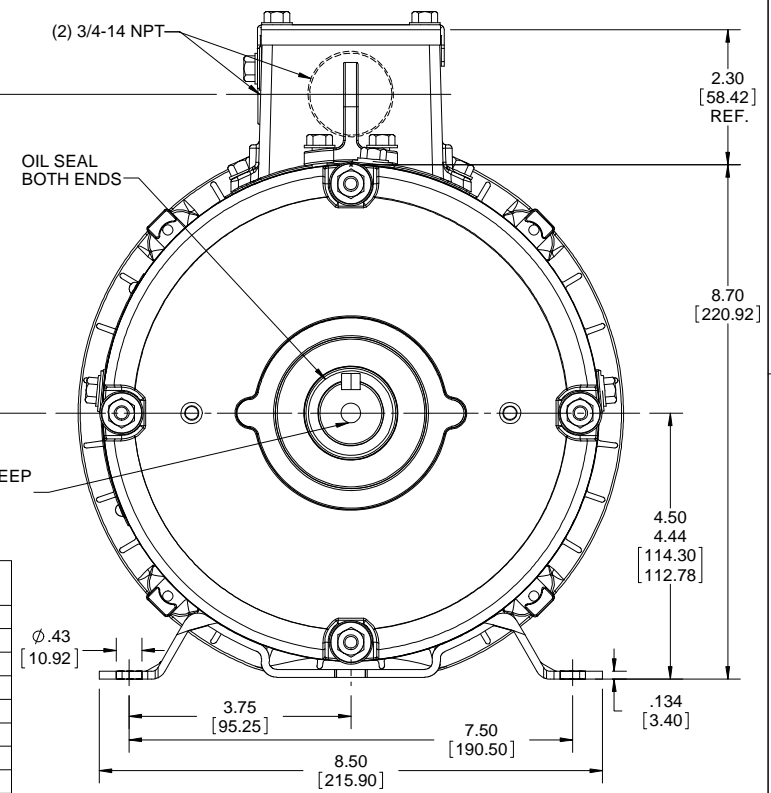
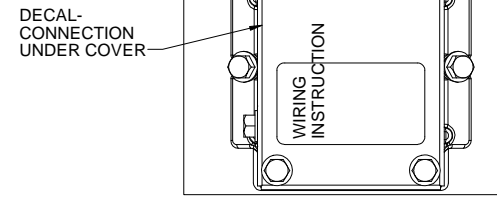
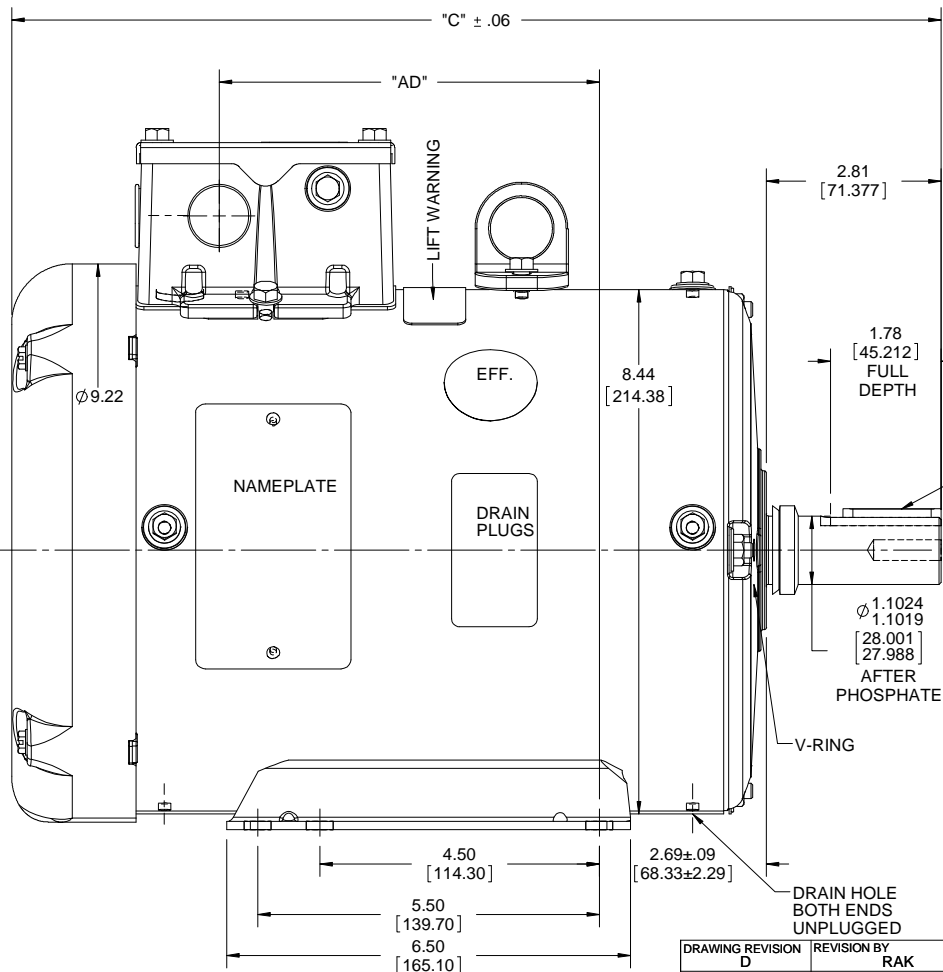


Nameplate Specifications

Output HP	2 Hp	Output KW	1.5 kW
Frequency	60 Hz	Voltage	230/460 V
Current	6.4/3.2 A	Speed	1175 rpm
Service Factor	1.5	Phase	3
Efficiency	88.5 %	Duty	Continuous
Insulation Class	F	Design Code	B
KVA Code	K	Frame	184TZ
Enclosure	Totally Enclosed Fan Cooled	Overload Protector	No
Ambient Temperature	40 °C	Drive End Bearing Size	6206
Opp Drive End Bearing Size	6205	UL	Recognized
CSA	Y	CE	N
IP Code	43		

Technical Specifications

Electrical Type	Squirrel Cage Induction Run	Starting Method	Across The Line
Poles	6	Rotation	Reversible
Mounting	Rigid base	Motor Orientation	HORIZONTAL
Drive End Bearing	BALL	Opp Drive End Bearing	BALL
Frame Material	Rolled Steel	Shaft Type	IEC
Overall Length	14.96 in	Frame Length	9.50 in
Shaft Diameter	1.125 in	Shaft Extension	2.81 in
Assembly/Box Mounting	F1/F2 CAPABLE		
Outline Drawing	035684-950	Connection Diagram	005010.01



DASH NO.	"C"	"AD"
800	13.46	4.62
850	13.96	5.12
900	14.46	5.62
950	14.96	6.12
1000	15.46	6.62
1050	15.96	7.12
1100	16.46	7.62
1150	16.96	8.12

FEATHER PICKER MOTOR SPECIAL FEATURES
 GASKETS THROUGHOUT
 OIL SEALS BOTH ENDS & V-RING
 DRAIN HOLES IN FRAME @ 3.9 & 12 O'CLOCK
 STAINLESS STEEL CONDUIT BOX, NAMEPLATE, HARDWARE
 PHOSPHATIZED SHAFT
 FDA APPROVED WHITE EPOXY PAINT

DRAWING REVISION D	REVISION BY RAK	DATE 07-10-2017
ECO ECO-0127026	APPROVED BY LST	DATE 07-10-2017
ECO DESCRIPTION UPDATE SHAFT DIAMETER		
<small>COPYRIGHT REGAL BELOIT AMERICA, INC. ALL RIGHTS RESERVED. PROPRIETARY AND CONFIDENTIAL INFORMATION - THIS DOCUMENT IS THE PROPERTY OF REGAL BELOIT AMERICA, INC. (OWNER) AND CONTAINS OWNER'S PROPRIETARY INFORMATION. ANY PERSON, CORPORATION OR OTHER FIRM RECEIVING IT IS DEEMED, BY RECEIVING IT, TO AGREE THAT IT, AND/OR ANY PART OF IT, SHALL NOT BE DISCLOSED TO ANY PERSON, CORPORATION OR OTHER ENTITY, DUPLICATED, AND/OR USED, EXCEPT AS EXPRESSLY APPROVED IN WRITING IN ADVANCE BY OWNER. THIS DOCUMENT SHALL BE RETURNED TO OWNER UPON REQUEST. IT MAY BE SUBJECT TO CERTAIN RESTRICTIONS UNDER APPLICABLE EXPORT CONTROL LAWS AND REGULATIONS.</small>		

TOLERANCES UNLESS OTHERWISE SPECIFIED:
 DEC. INCH mm ANGLE
 .X ±0.1 [+2.5]
 .XX ±0.01 [+0.25]
 .XXX ±0.005 [+0.127]
 .XXXX ±0.0005 [+0.0127]
 REMOVE BURRS & BREAK SHARP
 EDGES: .003/.015 [0.076/.381] X 45 °
 CORNER FILLETS: R.02 [51]
 MACHINED SURFACES: 125/3.2
 INCH mm
 mm SHOWN IN [BRACKETS]

DRAWN BY VS	DATE 8/13/08
APPROVED BY	DATE
REFERENCE 035531	THIRD ANGLE PROJECTION

REGAL™ Regal Beloit America, Inc.

DESCRIPTION: **OUTLINE**
TEFC - RIGID

MATERIAL FEATHER PICKER MOTOR	PROCESS/FINISH
SIZE B	DRAWING NUMBER 035684
SHEET 1 OF 1	

005010-01

VIEW FROM OUTSIDE OF MOTOR AT SWITCH END.



VOLTAGE	L1	L2	L3	JOIN & INSULATE
HIGH	T1	T2	T3	(T4,T7) (T5,T8) (T6,T9)
LOW	T1,T7	T2,T8	T3,T9	T4,T5,T6

				TOLERANCES UNLESS SPECIFIED		REGAL ™ Regal Beloit America, Inc.		DRAWN RDW 04/12/02				
				DEC.	INCHES			CHK				
				.X	±.1			APPD				
				.XX	±.01			SCALE 1=1				
				.XXX	±.005	TITLE		REF FIG.2-51				
A	UPDATED TO REGAL LOGO			SAJ	06/26/15	AJY	.XXXX	±.0005	MAT'L.	DECAL - 004014	FMF	
NO.	REVISION			BY & DATE	CHK	ANG	±1/2"	FINISH			PREV	
THIS DRAWING IN DESIGN AND DETAIL IS OUR PROPERTY AND MUST NOT BE USED EXCEPT IN CONNECTION WITH OUR WORK ALL RIGHTS OF DESIGN AND INVENTION ARE RESERVED THIS IS AN ELECTRONICALLY GENERATED DOCUMENT - DO NOT SCALE THIS PRINT				RFP	04/12/02		CAD FILE	00501001		SIZE	DRAWING NO.	REV.
				DIST	BRF-NLV			A	005010-01		A	



P.O. BOX 8003
WAUSAU, WI 54401-8003
PH. 715-675-3311

DATA VOLTS: 460

CERTIFICATION DATA SHEET

CONN. DIAGRAM: 005010.01
OUTLINE: 035684-950
WINDING: T8638

CAT #: 132246.00

FR 3

TYPICAL MOTOR PERFORMANCE DATA

HP	KW	SYNC RPM	FL RPM	FRAME	ENCLOSURE	TYPE	KVA CODE	DESIGN					
2	1.5	1200	1175	184	TEFC	TFW	K	B					
PH	HZ	VOLTS	AMPS	START TYPE	DUTY	INSL	S.F.	AMB	ELEV.				
3	60	230/460	6.4/3.2	ACROSS THE LINE	CONT	F	1.15	40	3300				
	F.L. EFF	88.5	3/4 LD EFF	88.0	1/2 LD EFF	87.1	GTD EFF	ELECT. TYPE					
	F.L. PF	66.5	3/4 LD PF	58.9	1/2 LD PF	47.2	86.5	SQ CAGE IND RUN					
	F.L. TORQUE	LR AMPS @ 460 V	16.8	LB-FT	187%	30.2	LB-FT	F.L. RISE (°C)					
	9.0	LB-FT	20.5				336%	32					
	PRESSURE @ 3	POWER	ROTOR WK²	MAX. LOAD WK²	SAFE STALL TIME	STARTS/HOUR	MOTOR WGT						
	55	DBA	64	DBA	0.00	LB-FT²	0	LB-FT²	15	SEC.	2	0	LB.

***** SUPPLEMENTAL INFORMATION *****

DE BRACKET TYPE	ODE BRACKET TYPE	MOUNT TYPE	MOTOR ORIENTATION	SEVERE DUTY	HAZARDOUS LOCATION	DRIP COVER	SCREENS	PAINT
STANDARD	STANDARD	RIGID	HORIZONTAL	NO	NONE	NO	NONE	ITE - LEESON (EPO
BEARINGS	GREASE	SHAFT TYPE	SPECIAL DE	SPECIAL ODE	SHAFT	MATERIAL	FRAME MATERIAL	
DE	ODE							
BALL	BALL	POLYREX EM	STANDARD IEC	NONE	NONE	1144 STRESSPROOF (C-223)	ROLLED STEEL	
6206	6205							
THERMOSTATS	PROTECTORS	WDG RTD's	BRG RTD's	THERMISTORS	CONTROL	SPACE HEATERS		
NONE	NOT	NONE	NONE	NONE	FALSE	NA		
R1 (ohms/ph)	R2 (ohms/ph)	X1 (ohms/ph)	X2 (ohms/ph)	Xm (ohms/ph)	VIBRATION (in/sec)	FLOAT		
0	0	0	0	0	0.150	ODE		

* N O T E S *		INVERTER TORQUE: NONE	
		INV. HP SPEED RANGE: NONE	
		ENCODER: NONE	
		NONE	
		NONE	
		BRAKE: NONE	
		NONE	
		FT-LB: NA	
		NONE	
		NONE	
		NONE PPR	

DATE:	1/23/2018	UL: Y-(LEESON UL REC)	HZ:
-------	-----------	-----------------------	-----

Data Sheet

Date: 1/23/2018

13224600



Data @ 460 V

Motor Load Data								
Load	0%	25%	50%	75%	100%	115%	125%	LR
Current (Amps)	1.94	2.05	2.32	2.70	3.2	3.5	3.7	20.5
Torque (ft-lb)	0.00	2.25	4.5	6.6	9.0	10.4	11.2	16.8
RPM	1200	1194	1188	1182	1175	1171	1168	0
Efficiency (%)		80.3	87.1	87.2	88.0	88.5	87.9	
P.F. (%)	6.1	29.1	47.2	58.9	66.5	69.8	71.5	0.0

Motor Speed Data					Information Block																					
Speed (RPM)	LR	Pull-Up	BD	Rated	Idle	HP	Sync. RPM	Frame	Enclosure	Construction	Voltage	Frequency	Design	LR Code letter	Service Factor	Temp Rise @ FL	Duty	Ambient	Elevation	Rotor/Shaft wk ²	Ref Wdg	Sound Pressure @ 1M	VFD Rating	Outline Dwg	Conn. Diag	Additional Specifications:
0	0	21	1000	1175	1200	2.0	1200	180	TEFC	TFW	230/460	60	B	K	1.15	32	CONT	40 °C	1,000 feet	0.00	LB-Fle	55	NONE	035684-950	005010.01	
Current (Amps)	20.5	20.1	10.1	3.2	1.94																					
Torque (ft-lb)	16.8	16.5	30.2	9.0	0.00																					

