

PRODUCT INFORMATION PACKET



Model No: C6C34WK25B

Catalog No: 119228.00

119228.00..1HP..3450RPM.56CZ.TEFC.115/230V.1PH.60HZ.CONT.40C.1.15SF.RIGID
C.C6C34WK25.....MILK TRANSFER PUMP.NONE.....

Milk Transfer



Regal and Leeson are trademarks of Regal Beloit Corporation or one of its affiliated companies.

©2018 Regal Beloit Corporation, All Rights Reserved. MC017097E



**Product Information Packet: Model No: C6C34WK25B, Catalog No:119228.00
 119228.00..1HP..3450RPM.56CZ.TEFC.115/230V.1PH.60HZ.CONT.40C.1.15SF.RIGID C.C6C34WK25.....MILK
 TRANSFER PUMP.NONE.....**



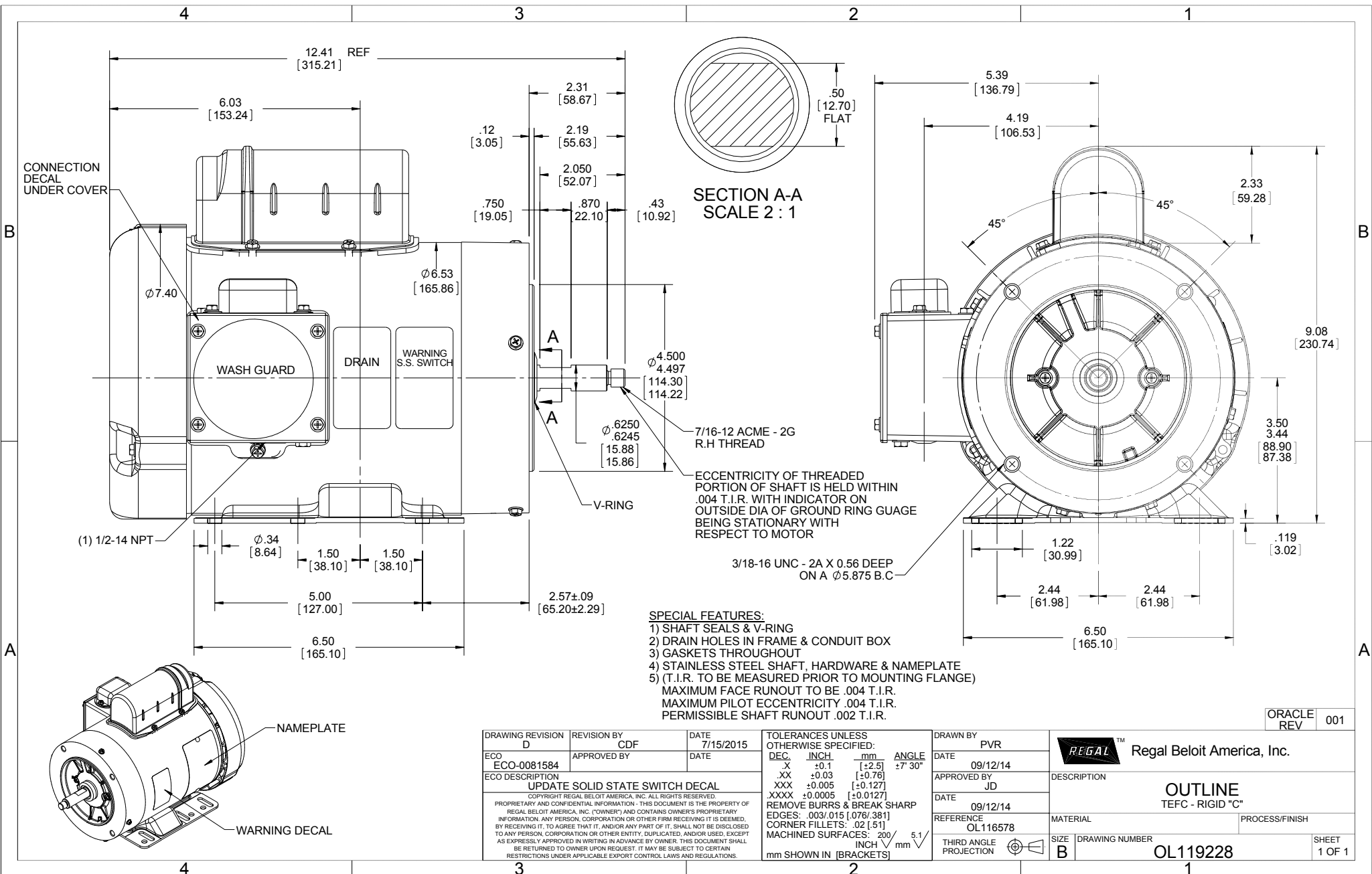
Nameplate Specifications

Output HP	1 Hp	Output KW	0.75 kW
Frequency	60 Hz	Voltage	115/208-230 V
Current	12.0/6.2-6.0 A	Speed	3450 rpm
Service Factor	1.15	Phase	1
Efficiency	70 %	Duty	Continuous
Insulation Class	F	Design Code	L
KVA Code	J	Frame	56CZ
Enclosure	Totally Enclosed Fan Cooled	Overload Protector	No
Ambient Temperature	40 °C	Drive End Bearing Size	6205
Opp Drive End Bearing Size	6203	UL	Recognized
CSA	Y	CE	N
IP Code	43		

Technical Specifications

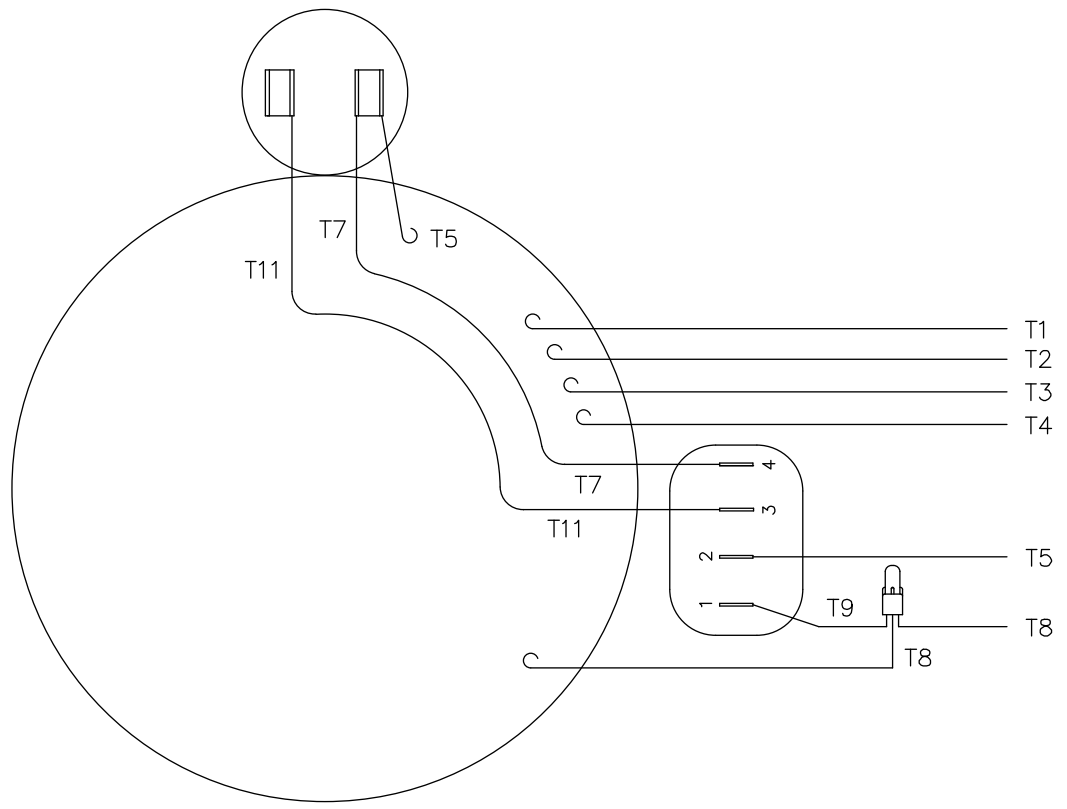
Electrical Type	Capacitor Start Induction Run	Starting Method	Across The Line
Poles	2	Rotation	Selective Counterclockwise
Mounting	Rigid base	Motor Orientation	HORIZONTAL
Drive End Bearing	BALL	Opp Drive End Bearing	BALL
Frame Material	Rolled Steel	Shaft Type	Single Special Extension
Overall Length	12.41 in	Frame Length	6.50 in
Shaft Diameter	0.625 in	Shaft Extension	2.19 in
Assembly/Box Mounting	F1 ONLY		
Outline Drawing	OL119228	Connection Diagram	005278.07

This is an uncontrolled document once printed or downloaded and is subject to change without notice. Date Created: 10/15/2018

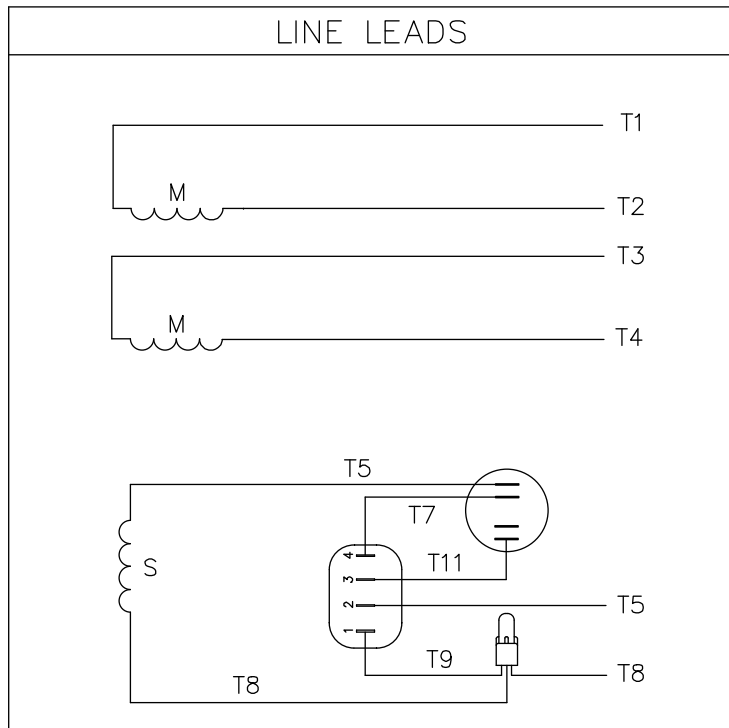


ORACLE REV 001

DRAWING REVISION D		REVISION BY CDF	DATE 7/15/2015	TOLERANCES UNLESS OTHERWISE SPECIFIED:		DRAWN BY PVR	Regal Beloit America, Inc.
ECO-0081584		APPROVED BY	DATE	DEC. INCH mm ANGLE	±7-30"	DATE 09/12/14	
ECO DESCRIPTION				XX ±0.1 [+2.5]	XXX ±0.03 [+0.76]	APPROVED BY JD	DESCRIPTION
UPDATE SOLID STATE SWITCH DECAL				XXXX ±0.005 [+0.127]	REMOVE BURRS & BREAK SHARP EDGES: .003/.015 [.076/.381]	DATE 09/12/14	OUTLINE TEFC - RIGID "C"
<small> PROPRIETARY AND CONFIDENTIAL INFORMATION - THIS DOCUMENT IS THE PROPERTY OF REGAL BELOIT AMERICA, INC. ("OWNER") AND CONTAINS OWNER'S PROPRIETARY INFORMATION. ANY PERSON, CORPORATION OR OTHER FIRM RECEIVING IT IS DEEMED, BY RECEIVING IT, TO AGREE THAT IT, AND/OR ANY PART OF IT, SHALL NOT BE DISCLOSED TO ANY PERSON, CORPORATION OR OTHER ENTITY, DUPLICATED, AND/OR USED, EXCEPT AS EXPRESSLY APPROVED IN WRITING IN ADVANCE BY OWNER. THIS DOCUMENT SHALL BE RETURNED TO OWNER UPON REQUEST. IT MAY BE SUBJECT TO CERTAIN RESTRICTIONS UNDER APPLICABLE EXPORT CONTROL LAWS AND REGULATIONS. </small>				CORNER FILLETS: .02 [.51]	MACHINED SURFACES: 200 INCH 5.1 mm SHOWN IN [BRACKETS]	REFERENCE OL116578	PROCESS/FINISH
THIRD ANGLE PROJECTION		SIZE B	DRAWING NUMBER OL119228	SHEET 1 OF 1			



VIEW FROM OUTSIDE OF MOTOR AT SWITCH END.



	ROTATION FACING LEAD END	L1	L2	JOIN & INSULATE
HIGH VOLT	C.C.W.	T1	T4 T5	T2, T3 T8
	C.W.	T1	T4 T8	T2, T3 T5
LOW VOLT	C.C.W.	T1, T3 T8	T2, T4 T5	
	C.W.	T1, T3 T5	T2, T4 T8	

				TOLERANCES UNLESS OTHERWISE SPECIFIED		LEESON ELECTRIC CORPORATION				
				DECIMALS						
				.00	± .01	DRAWN	TITLE			
				.000	± .005	CH'K'D.	EXTERNAL WIRING DIAGRAM TYPE "C" W/O PROTECTOR			
01	ADDED DECAL FOR STOCK MOTORS ECR 0042509	GWS	9/10/13	.0000	± .0005	APPR.	MAT'L. DECAL - 004012			
NO.	REVISION	BY	DATE	FRACTIONS	± 1/64	SCALE	STOCK MOTORS TO USE DECAL 214-0122-001			
THIS DRAWING IN DESIGN AND DETAIL IS OUR PROPERTY AND MUST NOT BE USED EXCEPT IN CONNECTION WITH OUR WORK ALL RIGHTS OF DESIGN AND INVENTION ARE RESERVED				ANGLES	± 1/2*	REF.	FINISH		SIZE	DRAWING NO.
				INCH/MM		FMF	STANDARD		A	005278-07



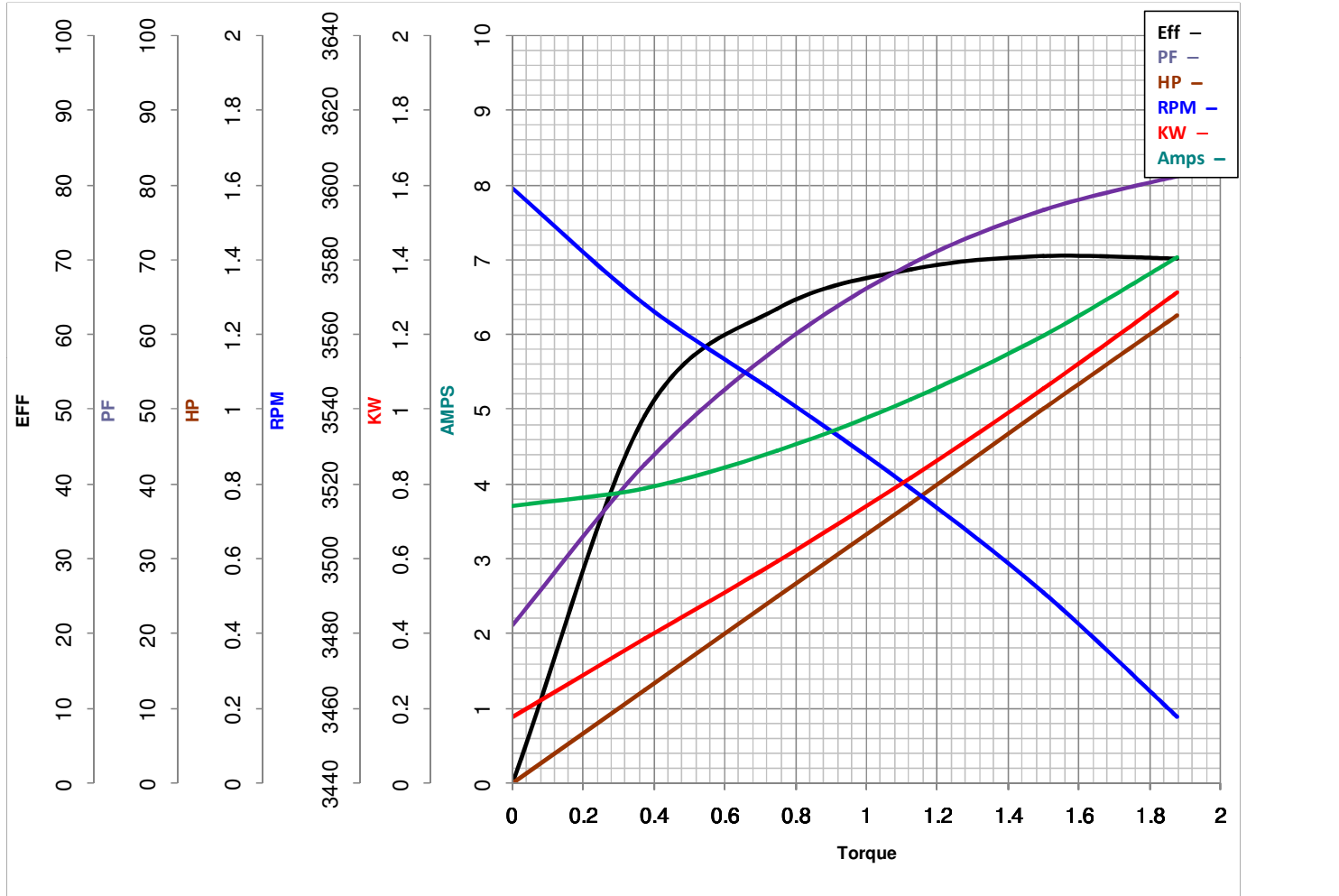
LEESON ELECTRIC CORPORATION
 TYPICAL PERFORMANCE CURVE for AC MOTOR

Model No 119228.00

Curve at 230 Volts HP 1.00 PHASE 1
60 HZ
1 HP VOLTS 115/208-230

Catalog No 119228.00

HZ 60 RPM 3450



Torque in Lb.Ft

FL TORQUE 1.5 Lb.Ft
 BD TORQUE 4.0 Lb.Ft
 LR TORQUE 5 Lb.Ft

FL AMPS 12/6.2-6
 PU TORQUE 3.8 Lb.Ft
 LR AMPS 34

WINDING C632211-3

Date 4/23/2018