

PRODUCT INFORMATION PACKET



Model No: C6K46DR1J

Catalog No: 111955.00

..1/.44HP..1725/1140RPM.56H.DP.115V.1PH.60HZ.CONT.40C.1.0SF.RESIL.C6K46DR1J.....FAN &
BLOWER.NOT.....

2 Speed



Regal and Leeson are trademarks of Regal Beloit Corporation or one of its affiliated companies.

©2018 Regal Beloit Corporation, All Rights Reserved. MC017097E



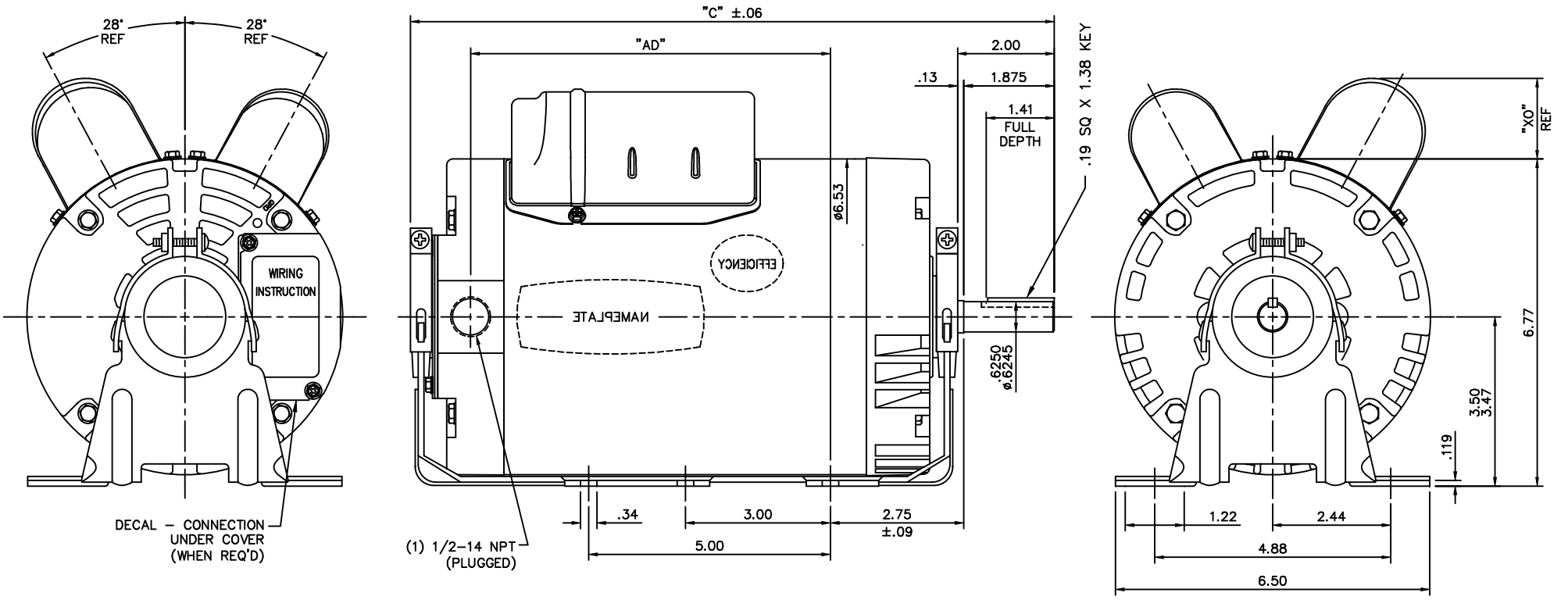


Nameplate Specifications


Output HP	1 Hp	Output KW	0.75 kW
Frequency	60 Hz	Voltage	115 V
Current	13.2 A	Speed	1725 rpm
Service Factor	1	Phase	1
Efficiency	69 %	Duty	Continuous
Insulation Class	F	Design Code	NO DESIGN CODE
KVA Code	K	Frame	56H
Enclosure	Drip Proof	Overload Protector	No
Ambient Temperature	40 °C	Drive End Bearing Size	6203
Opp Drive End Bearing Size	6203	UL	Recognized
CSA	Y	CE	N
IP Code	22		

Technical Specifications

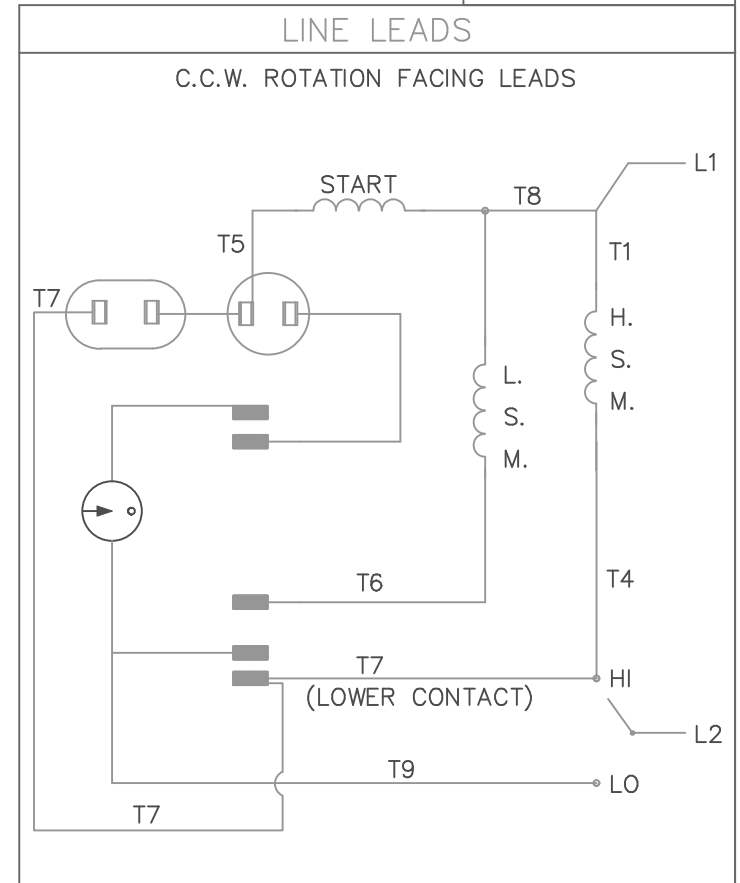
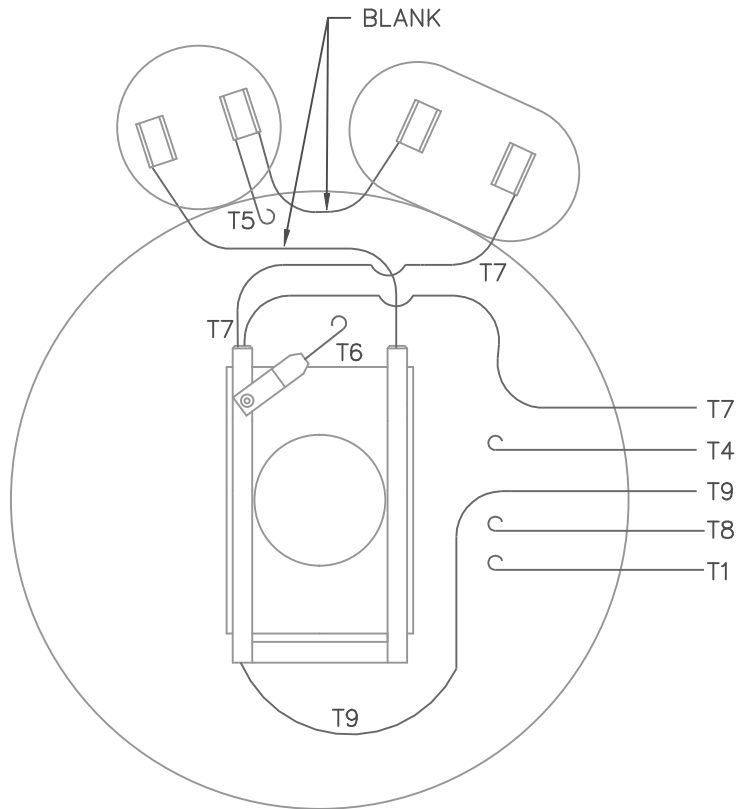
Electrical Type	Capacitor Start Capacitor Run	Starting Method	Across The Line
Poles	4	Rotation	Selective Counterclockwise
Mounting	Resilient Base	Motor Orientation	HORIZONTAL
Drive End Bearing	BALL	Opp Drive End Bearing	BALL
Frame Material	Rolled Steel	Shaft Type	NEMA 56
Overall Length	12.82 in	Frame Length	7.00 in
Shaft Diameter	0.625 in	Shaft Extension	1.88 in
Assembly/Box Mounting	F1 ONLY		
Outline Drawing	028757-700B	Connection Diagram	005228.01



DASH NO.	"C"	"AD"	CAP. DASH	"XO"
600	11.82	5.95	A	1.08
650	12.32	6.45	B	1.42
700	12.82	6.95	C	1.69
750	13.32	7.45		
800	13.82	7.95		

NO.		REVISION		BY & DATE		TOLERANCES UNLESS SPECIFIED		 REGAL-BELOIT CORPORATION	DRAWN RVD 08/08/06	
NO.	REV.	CHK	ANG	ANG	DATE	DEC.	INCHES		CHK	UJM 08/08/06
						.X	±.1	TITLE	OUTLINE- 56H FRAME	
						.XX	±.03		DRIP PROOF - RESILIENT	
						.XXX	±.005	MAT'L	GENERAL PURPOSE	
						.XXXX	±.0005	FINISH	PREV	
							±1/2"	CAD FILE	028757	SIZE DRAWING NO.
THIS DRAWING IN DESIGN AND DETAIL IS OUR PROPERTY AND MUST NOT BE USED EXCEPT IN CONNECTION WITH OUR WORK ALL RIGHTS OF DESIGN AND INVENTION ARE RESERVED THIS IS AN ELECTRONICALLY GENERATED DOCUMENT - DO NOT SCALE THIS PRINT								B	028757	REV.

VIEW FROM OUTSIDE OF MOTOR AT SWITCH END.



ROTATION FACING LEAD END	L1	L2	
		HI SPEED	LOW SPEED
C.C.W.	T1,T8	T4,T7	T9
C.W.	T4,T8	T1,T7	T9

				TOLERANCES UNLESS OTHERWISE SPECIFIED	
				DECIMALS	
07	CLARIFIED BLANK LEADS PER ASSY	SAW	11/12/98	.00	± .01
06	REDRAWN ON CAD	KH DBT	06/09/97	.0000	± .0005
NO.	REVISION	BY	DATE	FRACTIONS	± 1/64
				ANGLES	± 1/2°
				INCH/MM	

LEESON ELECTRIC CORPORATION					
DRAWN PG 07/10/85		TITLE EXTERNAL WIRING DIAGRAM			
CH'K'D. TEM		TYPE "K" W/O PROTECTOR			
APPR. 07/18/85		MAT'L. DECAL - 080092			
SCALE 1=1		SINGLE VOLT - DUAL ROT. - DUAL SPEED			
REF. 005209		FINISH GENERAL	SIZE A	DRAWING NO.	
FMF 85624D1		SLICING		005228-01	

THIS DRAWING IN DESIGN AND DETAIL IS OUR PROPERTY AND MUST NOT BE USED EXCEPT IN CONNECTION WITH OUR WORK ALL RIGHTS OF DESIGN AND INVENTION ARE RESERVED



LEESON ELECTRIC CORPORATION
 TYPICAL PERFORMANCE CURVE for AC MOTOR

Model No 111955.00

Catalog No 111955.00

Curve at 230
60
1

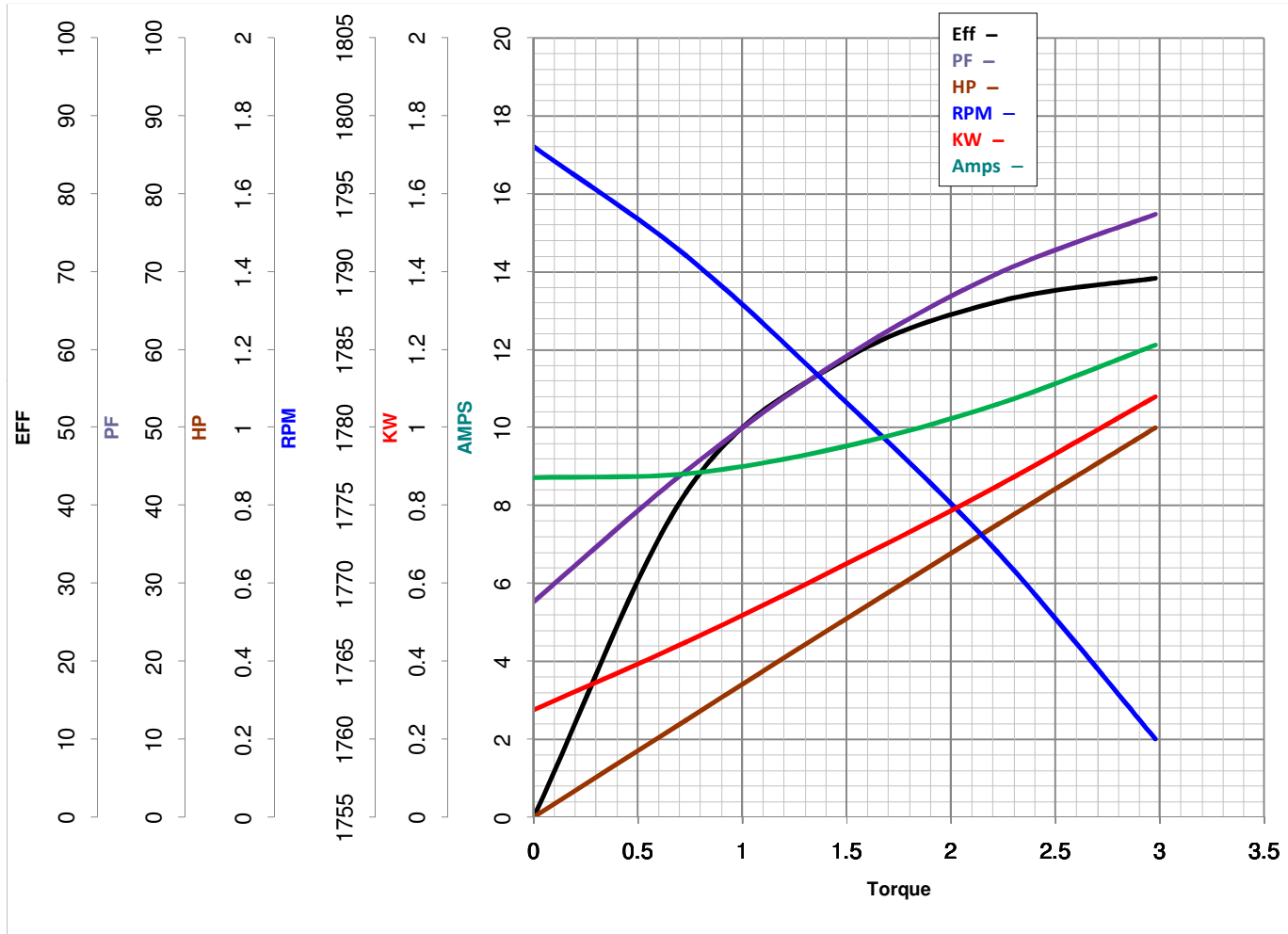
Volts
 HZ
 HP

HP 1&0.437
 VOLTS 115&115

PHASE 1

HZ 60&60

RPM 1725&1140



Torque in Lb.Ft

FL TORQUE 2.98 Lb.Ft
 BD TORQUE 8.6 Lb.Ft
 LR TORQUE 6.8 Lb.Ft

FL AMPS 13.2
 PU TORQUE 5.9 Lb.Ft
 LR AMPS 78

WINDING K63(4-6)15-1

Date 4/12/2018