

PRODUCT INFORMATION PACKET



Model No: C6K46DR3F

Catalog No: 113373.00

..1-.44HP..1725/1140RPM.56H.DP.230V.1PH.60HZ.CONT.40C.1.0SF.RESIL.C6K46DR3F.....FAN & BLOWER.NOT.....

2 Speed



Regal and Leeson are trademarks of Regal Beloit Corporation or one of its affiliated companies.

©2018 Regal Beloit Corporation, All Rights Reserved. MC017097E



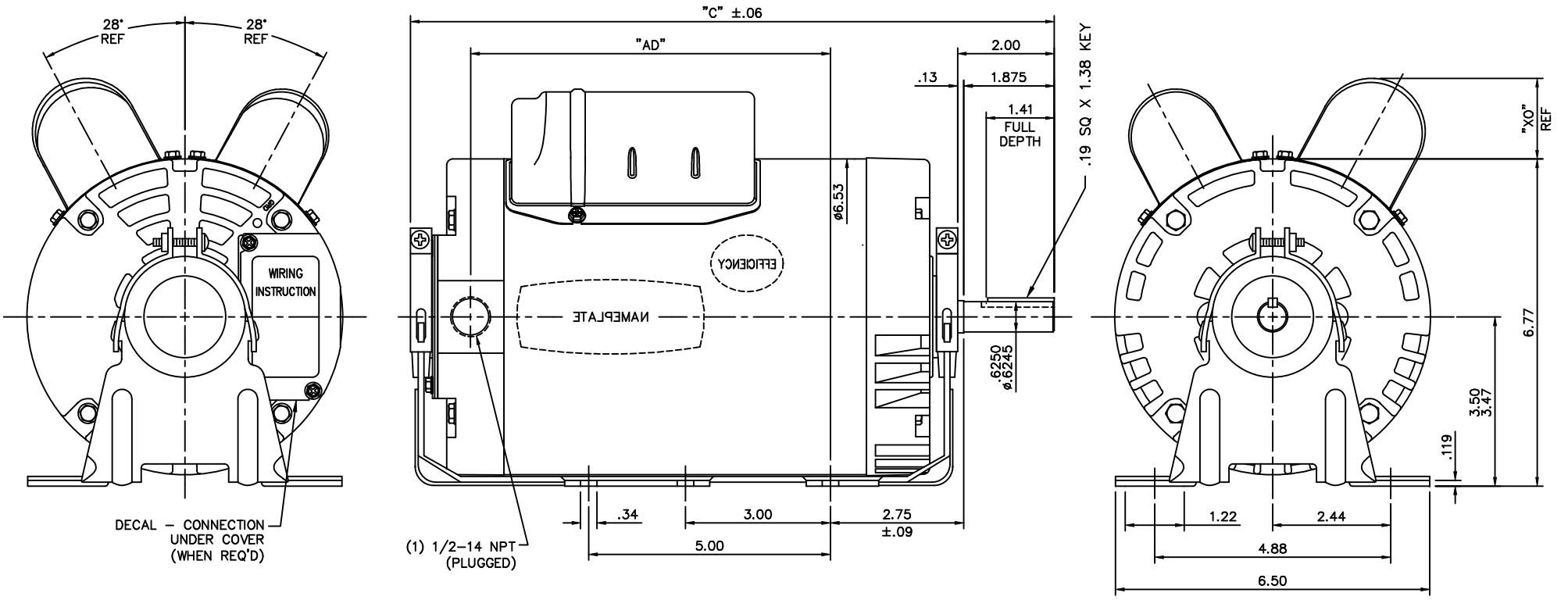


Nameplate Specifications

Output HP	1 Hp	Output KW	0.75 kW
Frequency	60 Hz	Voltage	230 V
Current	6.5 A	Speed	1725 rpm
Service Factor	1	Phase	1
Efficiency	69 %	Duty	Continuous
Insulation Class	F	Design Code	NO DESIGN CODE
KVA Code	K	Frame	56H
Enclosure	Drip Proof	Overload Protector	No
Ambient Temperature	40 °C	Drive End Bearing Size	6203
Opp Drive End Bearing Size	6203	UL	Recognized
CSA	Y	CE	N
IP Code	22		

Technical Specifications

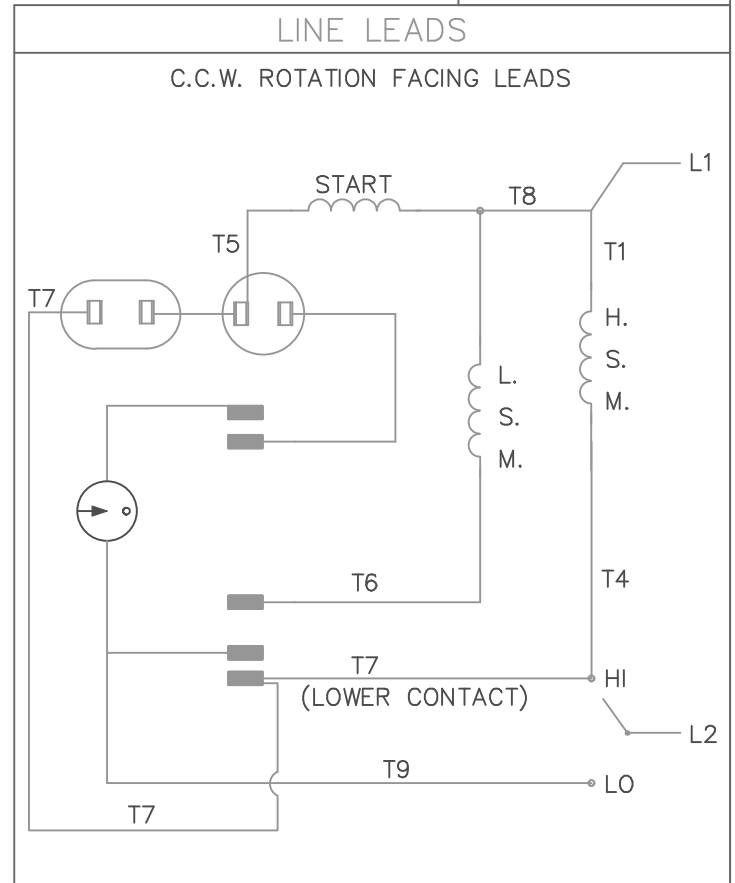
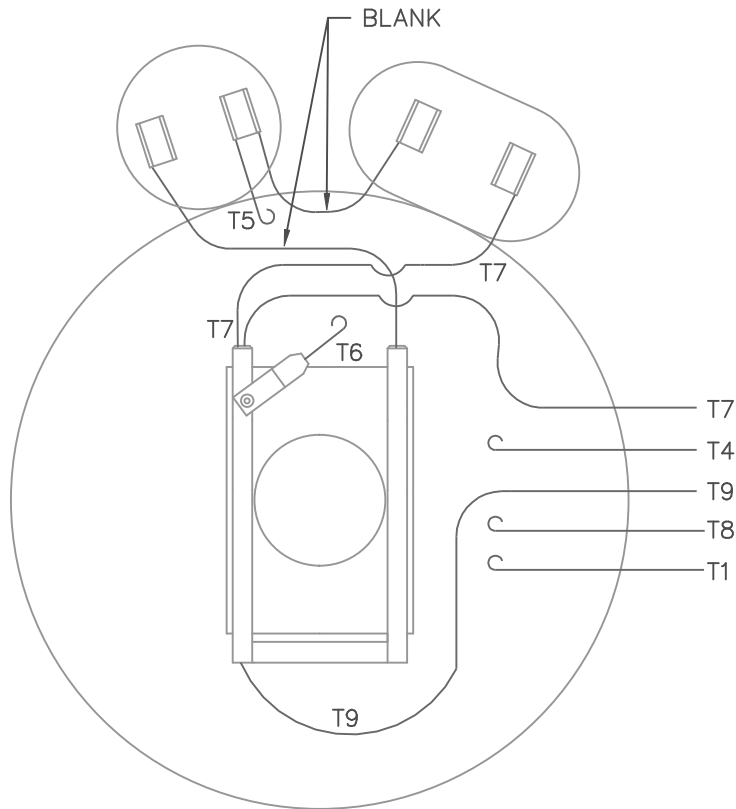
Electrical Type	Capacitor Start Capacitor Run	Starting Method	Across The Line
Poles	4	Rotation	Selective Counterclockwise
Mounting	Resilient Base	Motor Orientation	HORIZONTAL
Drive End Bearing	BALL	Opp Drive End Bearing	BALL
Frame Material	Rolled Steel	Shaft Type	NEMA 56
Overall Length	12.82 in	Frame Length	7.00 in
Shaft Diameter	0.625 in	Shaft Extension	1.88 in
Assembly/Box Mounting	F1 ONLY		
Outline Drawing	028757-700B	Connection Diagram	005228.01



DASH NO.	"C"	"AD"	CAP. DASH	"XO"
600	11.82	5.95	A	1.08
650	12.32	6.45	B	1.42
700	12.82	6.95	C	1.69
750	13.32	7.45		
800	13.82	7.95		

				TOLERANCES UNLESS SPECIFIED		REGAL-BELOIT CORPORATION		DRAWN	RVD	08/08/06
				DEC.	INCHES			CHK	UJM	08/08/06
				.X	±.1			APPD		
				.XX	±.03	TITLE		SCALE	1=2	
				.XXX	±.005	OUTLINE- 56H FRAME		REF	028747	
				.XXXX	±.0005	DRIP PROOF - RESILIENT		FMF		
						GENERAL PURPOSE		PREV		
NO.	REVISION	BY & DATE	CHK	ANG	±1/2"	FINISH			PREV	
			RFP			CAD FILE	028757	SIZE	DRAWING NO.	REV.
	THIS DRAWING IN DESIGN AND DETAIL IS OUR PROPERTY AND MUST NOT BE USED EXCEPT IN CONNECTION WITH OUR WORK ALL RIGHTS OF DESIGN AND INVENTION ARE RESERVED THIS IS AN ELECTRONICALLY GENERATED DOCUMENT - DO NOT SCALE THIS PRINT						DIST	B	028757	

VIEW FROM OUTSIDE OF MOTOR AT SWITCH END.



ROTATION FACING LEAD END	L1	L2	
		HI SPEED	LOW SPEED
C.C.W.	T1,T8	T4,T7	T9
C.W.	T4,T8	T1,T7	T9

				TOLERANCES UNLESS OTHERWISE SPECIFIED		LEESON ELECTRIC CORPORATION			
				DECIMALS					
				.00	± .01	DRAWN PG 07/10/85	TITLE EXTERNAL WIRING DIAGRAM		
07	CLARIFIED BLANK LEADS PER ASSY	SAW	11/12/98	.000	± .005	CH'K'D. TEM	TYPE "K" W/O PROTECTOR		
06	REDRAWN ON CAD	KH DBT	06/09/97	.0000	± .0005	APPR. 07/18/85	MAT'L. DECAL - 080092		
NO.	REVISION	BY	DATE	FRACTIONS	± 1/64	SCALE 1=1	SINGLE VOLT - DUAL ROT. - DUAL SPEED		
THIS DRAWING IN DESIGN AND DETAIL IS OUR PROPERTY AND MUST NOT BE USED EXCEPT IN CONNECTION WITH OUR WORK ALL RIGHTS OF DESIGN AND INVENTION ARE RESERVED				ANGLES	± 1/2°	REF. 005209	FINISH GENERAL	SIZE	DRAWING NO.
				INCH/MM		FMF 85624D1	SLICING	A	005228-01



LEESON ELECTRIC CORPORATION
 TYPICAL PERFORMANCE CURVE for AC MOTOR

Model No 113373.00

Curve at 230
60
1

Volts
 HZ
 HP

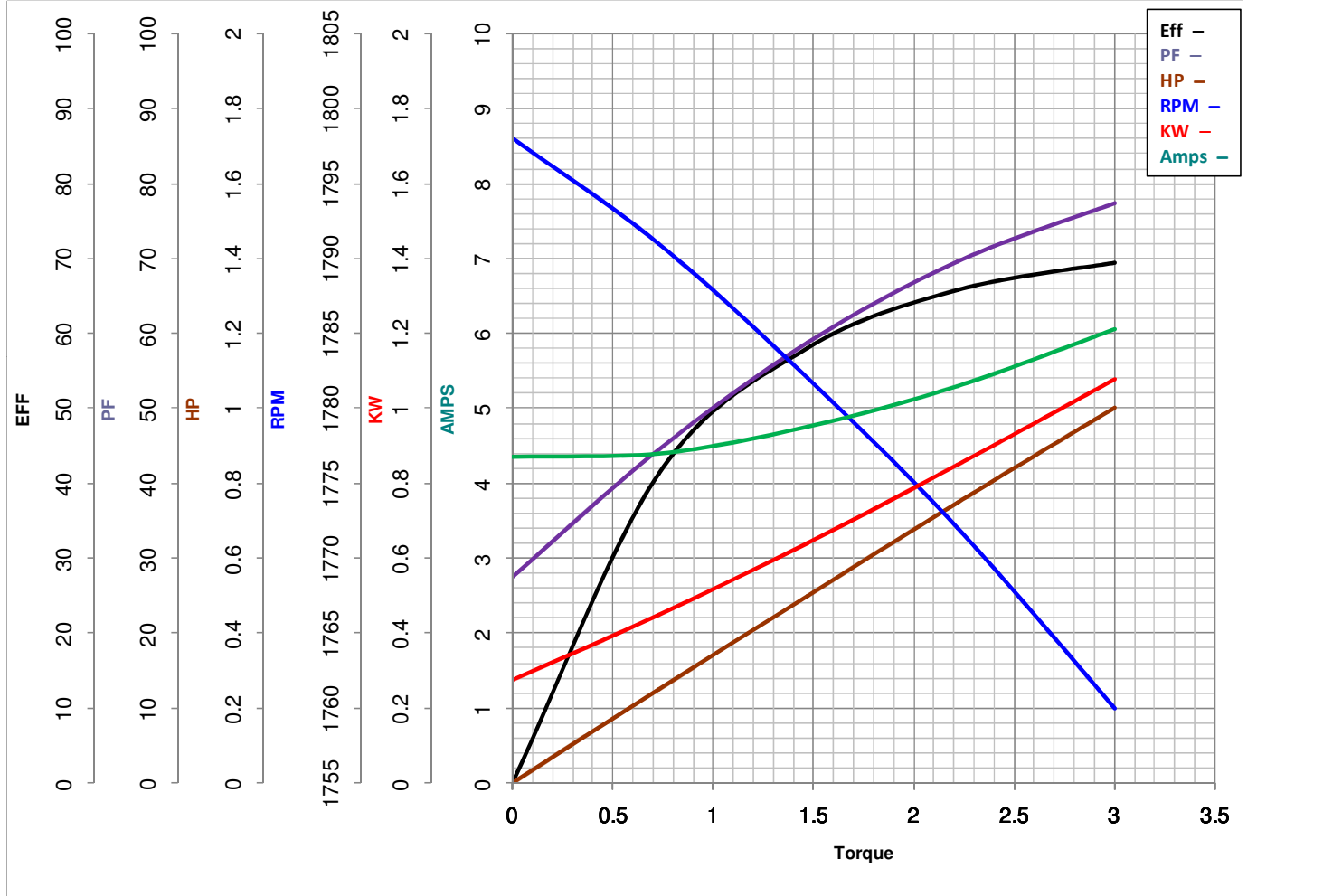
HP 1&0.4375
 VOLTS 230&230

PHASE 1

Catalog No 113373.00

HZ 60&60

RPM 1725&1140



Torque in Lb.Ft

FL TORQUE 3 Lb.Ft
 BD TORQUE 8.6 Lb.Ft
 LR TORQUE 6.8 Lb.Ft

FL AMPS 6.5
 PU TORQUE 5.9 Lb.Ft
 LR AMPS 3.9

WINDING K63(4-6)15-2

Date 5/2/2018