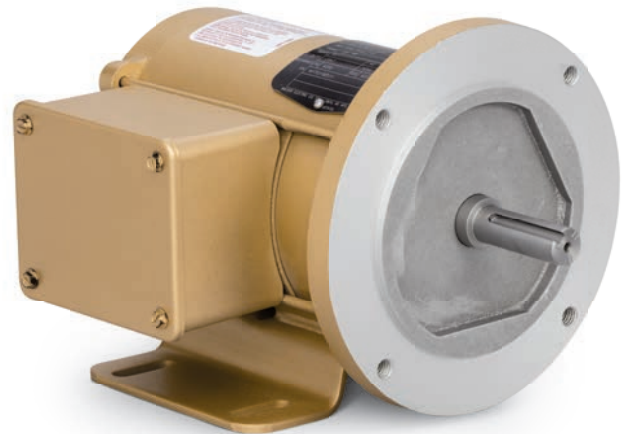




EC Gold series permanent magnet AC motors

Energy Efficient-Power Dense



BALDOR • RELIANCE

The EC Gold series is a synchronous PM motor designed to be a highly efficient, compact package that is interchangeable with standard induction motors. All frame sizes meet NEMA dimensions for ease of installation and retrofitting. The platform is designed to be used with an industrial PM drive while simplifying component replacement compared to similar integral solutions. The synchronous PM design offers excellent speed regulation with no feedback required and maintains high efficiency over a wider range of speed than traditional induction motors.

Benefits:

- Non-integral motor and drive
- Efficiencies meet or exceed IE4
- Avoids induction rotor losses due to PM rotor design
- IP54 rated
- Windings are rated for 155C

Features:

- CE/cULus
- Foot and face mounting as standard with options for foot or face only
- TENV standard / TEAO ratings available

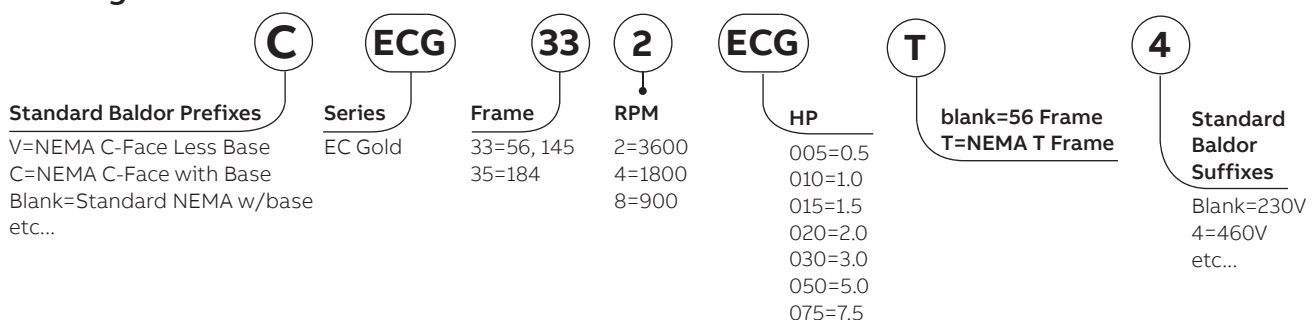
Applications:

- Pumps
- Compressors
- Fans
- Conveyors
- Material handling

Industries:

- HVAC
- Refrigeration
- Water / Wastewater
- Packaging
- Food and Beverage

Naming Convention



EC Gold Series

Permanent Magnet Motors

Ratings			
HP	RPM	NEMA Frame	Cat. No.
230 Volts			
1/2	3600	56C	CECG332005
	1800	56C	CECG334005
	900	56C	CECG338005
1	3600	56C	CECG332010
	1800	145TC	CECG334010T
	900	145TC	CECG338010T
1 1/2	3600	56C	CECG332015
	1800	145TC	CECG334015T
	900	145TC	CECG338015T
2	3600	56C	CECG332020
	1800	145TC	CECG334020T
	900	182TC	CECG358020T
3	3600	145TC	CECG332030T
	1800	145TC	CECG334030T
	900	182TC	CECG358030T
5	3600	184TC	CECG352050T
	1800	184TC	CECG354050T
7 1/2	3600	184TC	CECG352075T

Ratings			
HP	RPM	NEMA Frame	Cat. No.
400 Volts			
1/2	3600	56C	CECG332005-4
	1800	56C	CECG334005-4
	900	56C	CECG338005-4
1	3600	56C	CECG332010-4
	1800	145TC	CECG334010T-4
	900	145TC	CECG338010T-4
1 1/2	3600	56C	CECG332015-4
	1800	145TC	CECG334015T-4
	900	145TC	CECG338015T-4
2	3600	56C	CECG332020-4
	1800	145TC	CECG334020T-4
	900	182TC	CECG358020T-4
3	3600	145TC	CECG332030T-4
	1800	145TC	CECG334030T-4
	900	182TC	CECG358030T-4
5	3600	184TC	CECG352050T-4
	1800	184TC	CECG354050T-4
7 1/2	3600	184TC	CECG352075T-4

Smaller footprint

EC Gold Series



Standard Induction



2 HP

1800 RPM

31 Lbs.

43 Lbs.

ABB Motors and Mechanical, Inc.

5711 R.S. Boreham, Jr. Street

Fort Smith, AR 72901 U.S.A.

Phone: 479-646-4711

new.www.abb.com/motors-generators