

BALDOR® • RELIANCE 

Product Information Packet

CECP84310T-4

60HP,3600RPM,3PH,60HZ,364TS,TEFC,FOOT

Part Detail							
Revision:	Q	Status:	PRD/A	Change #:		Proprietary:	No
Type:	AC	Elec. Spec:	A36WG0116	CD Diagram:	416820-036	Mfg Plant:	
Mech. Spec:		Layout:	617428-009	Poles:	02	Created Date:	10-19-2010
Base:		Eff. Date:	04-13-2018	Leads:	3#4		

Specs			
Catalog Number:	CECP84310T-4	Feedback Device:	NO FEEDBACK
Enclosure:	TEFC	Heater Indicator:	No Heater
Frame:	364TSC	Insulation Class:	F
Frame Material:	Iron	Inverter Code:	Inverter Ready
Output @ Frequency:	60.000 HP @ 60 HZ	KVA Code:	G
Synchronous Speed @ Frequency:	3600 RPM @ 60 HZ	Lifting Lugs:	No Lifting Lugs
Voltage @ Frequency:	460.0 V @ 60 HZ	Motor Lead Quantity/Wire Size:	3 @ 4 AWG
XP Class and Group:	CLI GP A,B,C,D	Motor Type:	A36056M
XP Division:	Division II	Mounting Arrangement:	F1
Agency Approvals:	UR	Power Factor:	91
	CSA EEV	Pulley End Bearing Type:	Ball
	CCSA US	Pulley Face Code:	C-Face
Auxillary Box:	No Auxillary Box	Shaft Ground Indicator:	No Shaft Grounding
Base Indicator:	Rigid	Shaft Rotation:	Phase Seq-Std Rot (CCWODE)
Bearing Grease Type:	Polyrex EM (-20F +300F)	Shaft Slinger Indicator:	No Slinger
Constant Torque Speed Range:	6-60	Speed Code:	Single Speed
Current @ Voltage:	65.100 A @ 460.0 V	Motor Standards:	NEMA
Design Code:	B	Starting Method:	Direct on line

Drip Cover:	No Drip Cover	Thermal Device - Bearing:	NONE (OLD)
Duty Rating:	CONT	Thermal Device - Winding:	None
		XP Temp Code:	T3

Nameplate NP3237									
CAT NO	CECP84310T-4		SPEC NO.	P36G1039		DESIGN	B		
HP	60	AMPS	65.1	VOLTS	460	SF	1.15	DUTY	CONT
FRAME SIZE	364TSC	RPM	3560	HZ	60	AMB	40	PH	3
D.E. BRG.DATA	6313	O.D.E. BRG.DATA	6313	TYPE	P	ENCL	TEFC	CODE	G
D.E. BRG.	65BC03J30X	POWER FACTOR	91	INSUL.CLASS	F				
O.D.E. BRG.	65BC03J30X	MAX CORR KVAR	05.0	NEMA-NOM-EFFICIENCY	95				
3/4 LOAD EFF.	95.4	IP	56	GUARANTEED EFFICIENCY	94.5				
TEMP CODE	T3	TEMP =	200	VT HZ	0-60				
CHP HZ	60-75	CT HZ	6-60	SER.NO.					
INVERTER-TEMP-CODE	T3	MOTOR WEIGHT							

Nameplate 000613007EX

CAT NO	CECP84310T-4	SPEC NO.	P36G1039
NO. ROTOR BARS	38	GREASE TYPE	POLYREX EM
NO. SLOTS	48	NL AMPS AT RATED VOLTAGE	14.1
5 YEAR WARRANTY		WINDING RES @25 C	.10196
MFG. DATE		SER.NO	
			OHMS

Parts List		
Part Number	Description	Quantity
SA207270	SA P36G1039	1.000 EA
RA194537	RA P36G1039	1.000 EA
NP3237	SS SUPER E INVERTER DUTY IEEE 841	1.000 EA
000613007EX	SS IEEE 841 EMBOSSED AUXILIARY NAMEPLATE	1.000 EA
000692000JP	N/P	1.000 EA
000692000VD	LABEL WARNING	1.000 EA
000692000VH	N/P (RELEASE 1000 PCS)	1.000 EA
004824015A	GREASE POLYREX EM	0.544 LB
032018008AK	HHCS 1/4-20X1 PLATED	4.000 EA
032018012DK	HHCS 1/2-13X1-1/2 PLTD.	4.000 EA
032018024CK	HHCS 3/8-16X3 PLTD.	3.000 EA
034180012DA	KEY 1X4X1/4X1-1/2 L	1.000 EA
032018012DK	HHCS 1/2-13X1-1/2 PLTD.	4.000 EA
032018024CK	HHCS 3/8-16X3 PLTD.	3.000 EA
034600001AA	BUSH 1/4TO1/8 BLACK	1.000 EA
035000001G	GREASE RELIEF FITTING, ALEMITE 317400	1.000 EA
085922080BD	C-FACE BRKT 360 085922069WCA	1.000 EA
412118006A	DRAIN	1.000 EA
034600001AA	BUSH 1/4TO1/8 BLACK	1.000 EA
034530032BB	P/NIP 1/4X4" SCHED 40	1.000 EA
034530052AB	P/NIP 1/8X6-1/2 GALV.	1.000 EA
034630002AB	CPLG 1/4" PLATED	1.000 EA
035000001G	GREASE RELIEF FITTING, ALEMITE 317400	1.000 EA
078559034A	+F/C A 078559001A - 360	1.000 EA

Parts List (continued)		
Part Number	Description	Quantity
085922083BH	BRKT 360 085922072WCC KB	1.000 EA
410700004F	WSHR	1.000 EA
412118006A	DRAIN	1.000 EA
415028008E	INPRO SEAL - 360	1.000 EA
415072001B	CLAMP	1.000 EA
415096002A	CPLG 1/8 HEX TYPE	1.000 EA
423709011C	WASHER	3.000 EA
702674001C	FAN 360	1.000 EA
415028008E	INPRO SEAL - 360	1.000 EA
423709011C	WASHER	3.000 EA
032018010CK	HHCS 3/8-16X1-1/4 PLTD.	4.000 EA
033512008LB	HHTTS 1/4-20X1 PLATED	4.000 EA
034000014AB	WSH ID.406 OD.812 TH.065	4.000 EA
035000001A	ALFTG 1/8" 1610-BL	1.000 EA
035000001A	ALFTG 1/8" 1610-BL	1.000 EA
067053000B	GASK 320-400	1.000 EA
076708000BB	C/B - 360	1.000 EA
076709000A	C/B Cover - 360	1.000 EA
406099000A	PLUG - FAN COVER 320-440	1.000 EA
415000103H	415000103H	1.000 EA
415039016A	TERBD, 360-400	1.000 EA
418150003A	GREASE FITTING CAP	1.000 EA
418150003A	GREASE FITTING CAP	1.000 EA
033775004EA	DRSCR #6-1/4 304 S.S.	4.000 EA

Product Information Packet: CECP84310T-4 - 60HP,3600RPM,3PH,60HZ,364TS,TEFC,FOOT

034180016GA	KEY 1/2X1/2X2 L	1.000 EA
MG1025N19	WILKO 778.50 BLUE GREEN - 55 GAL DRUMS	0.250 GA
004824003CBY	WILKO PAINT 060.02 - ACTIVATOR	0.063 GA
482403003BEF	RUST VETO 342	0.006 GA
MG1500G03-5	LACQUER PRIMER, GRAY	0.063 GA
421948051	LABEL, MYLAR	1.000 EA
LB1449	DIV-2/NEC WARNING LABEL	1.000 EA
000613006PU	N/P (RELEASE QTY 10,000) UL CSA LABEL	1.000 EA
032018005DL	1/2-13 X 5/8 SILICON BRONZE HHCS	1.000 EA

S/O	FRAME	HP	TYPE	PHASE/ HERTZ	RPM	VOLTS
	364TSC	60	P	3/60	3560	460
AMPS	DUTY	AMB %/ INSUL	S.F.	NEMA DESIGN	CODE LETTER	ENCLOSURE
65.1	CONT	40/F	1.15	B	G	TEFC
E/S	ROTOR	TEST S.O.	TEST DATE	STATOR RES. @25 °C OHMS (BETWEEN LINES)		
491282	418141005XE	---	---	.101		

PERFORMANCE

LOAD	HP	AMPERES	RPM	% POWER FACTOR	% EFFICIENCY
NO LOAD	0	14.1	3600	6.54	0
1/4	15.0	20.8	3590	72.8	93.1
2/4	30.0	33.4	3580	88.2	95.3
3/4	45.0	48.6	3570	90.7	95.5
4/4	60.0	65.1	3559	90.7	95.1
5/4	75.0	82.2	3547	90.3	94.5

SPEED TORQUE

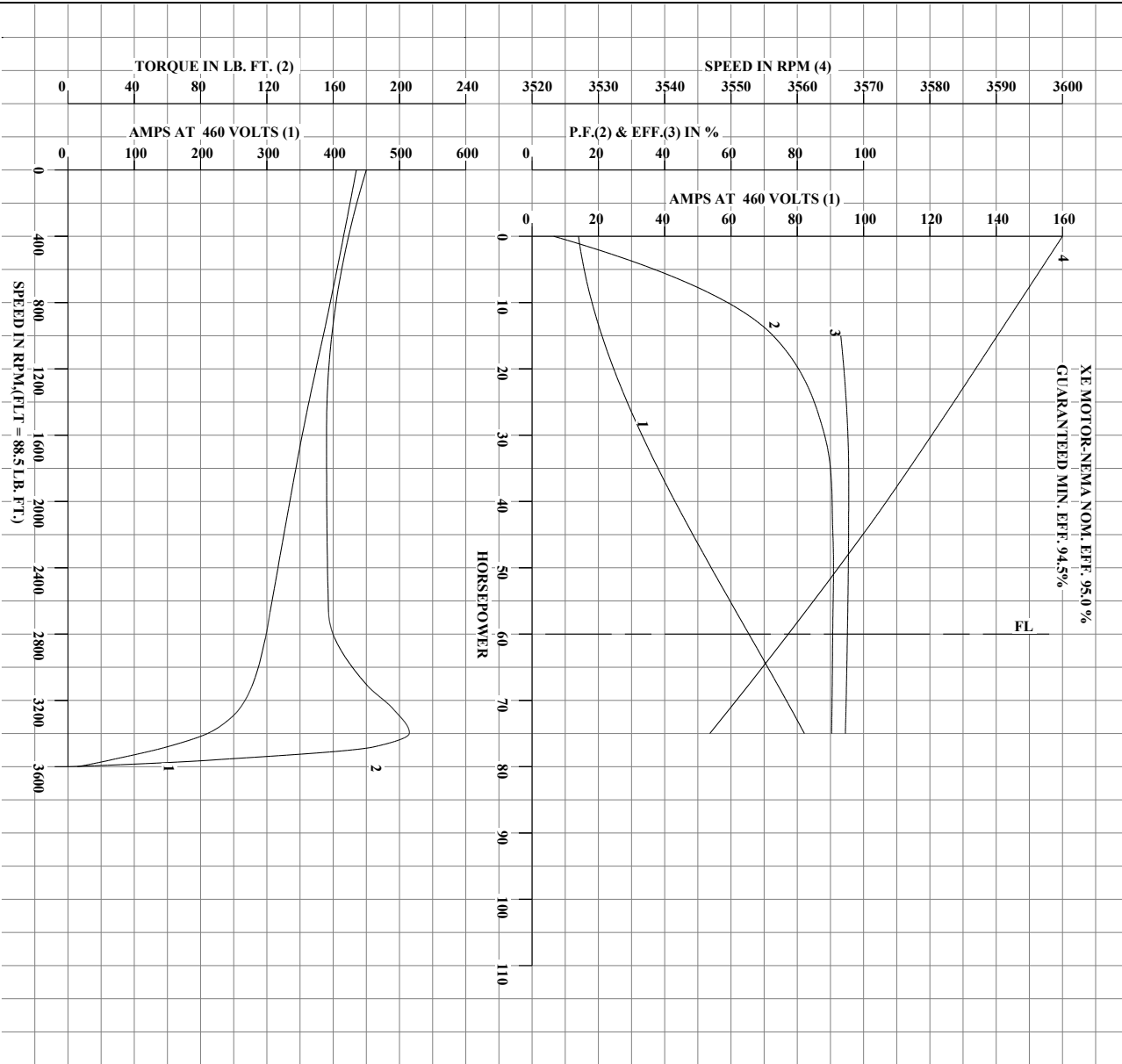
	RPM	% FULL LOAD TORQUE	TORQUE LB.-FT.	AMPERES
LOCKED ROTOR	0	203	180	435
PULL UP	1565	176	156	355
BREAKDOWN	3397	233	206	212
FULL LOAD	3559	100	88.5	65.1

AMPERES SHOWN FOR 460 VOLT CONNECTION. IF OTHER CONNECTIONS ARE AVAILABLE, THE AMPERES WILL VARY INVERSELY WITH THE RATED VOLTAGE.

TYPICAL DATA
 XE MOTOR-NEMA NOM. EFF. 95.0 %
 GUARANTEED MIN. EFF. 94.5%

	DRAWN BY: G.R. WEBB	AC MOTOR PERFORMANCE DATA	A36WG0116-R001
	CHECKED BY: J.J.HARRISON APPROVED BY: W.L.SMITH DATE: 07/31/02		
		DATE ISSUED 09/26/18	

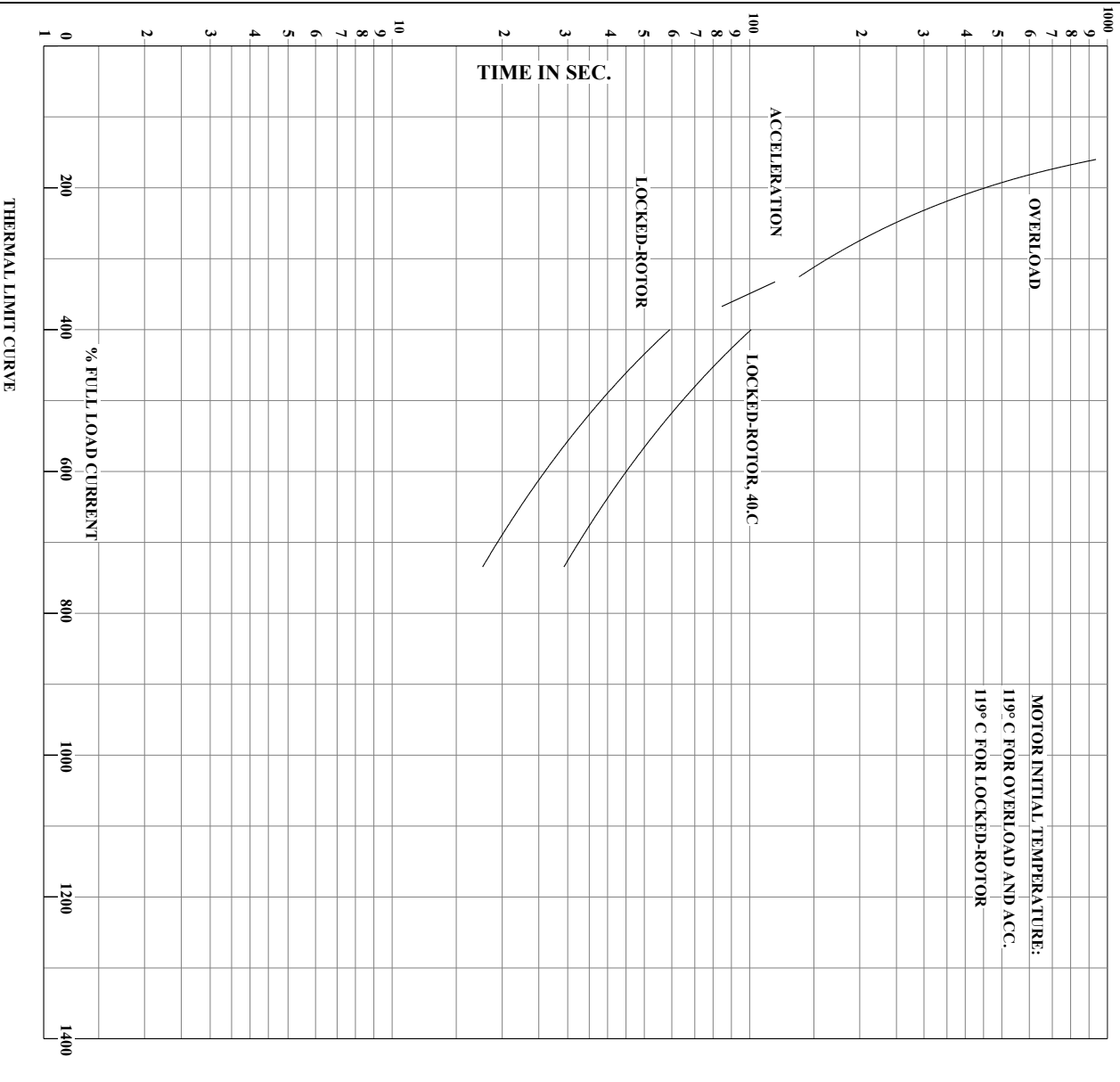
REL.S.O.	RPM 3560	S.F. 1.15	ROTOR 418141005XE
FRAME 364TSC	VOLTS 460	NEMA DESIGN B	TEST S.O. TYPICAL DATA
HP 60	AMPS 65.1	CODE LETTER G	TEST DATE --
TYPE P	DUTY CONT	ENCLOSURE TEFC	STATOR RES. @ 25°C .101
PHASE/HERTZ 3/60	AMB °C/INSUL 40/F	E/S 491282	OHMS (BETWEEN LINES)



	DRAWN BY: G. R. WEBB	AC MOTOR PERFORMANCE DATA	A36WG0116-R001
	CHECKED BY: J. HARRISON APPROVED BY: W. L. SMITH DATE: 07/31/02		

nsb/pen Printed on 09/26/2018 10:09 AM

REL.S.O.	RPM 3560	S.F. 1.15	ROTOR 418141005XE
FRAME 364TSC	VOLTS 460	NEMA DESIGN B	TEST S.O. TYPICAL DATA
HP 60	AMPS 65.1	CODE LETTER G	TEST DATE --
TYPE P	DUTY CONT	ENCLOSURE TEFC	STATOR RES. @ 25°C .101
PHASE/HERTZ 3/60	AMB °C/INSUL 40/F	E/S 491282	OHMS (BETWEEN LINES)

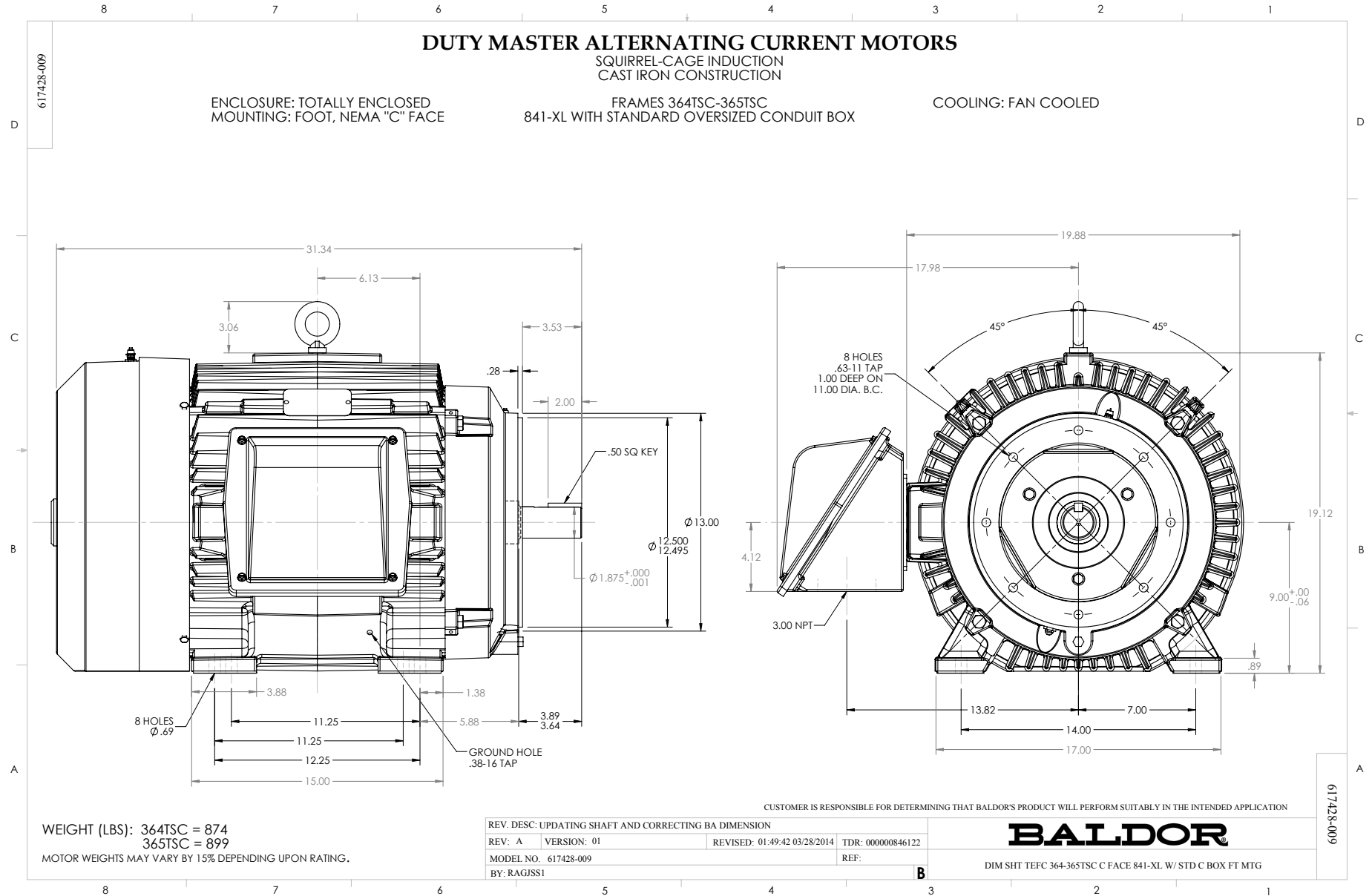


AMPERES SHOWN FOR 460 VOLT CONNECTION, IF OTHER VOLTAGE CONNECTIONS ARE AVAILABLE, THE AMPERES WILL VARY INVERSELY WITH THE RATED VOLTAGE.

	DRAWN BY: G. R. WEBB	AC MOTOR PERFORMANCE DATA	A36WG0116-R001
	CHECKED BY: J.HARRISON APPROVED BY: W.L. SMITH DATE: 07/31/02		

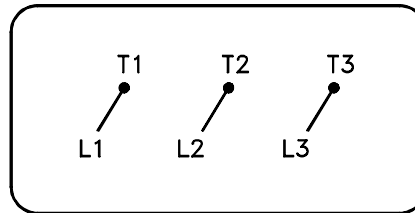
usbpen

Printed on 09/26/2018 10:09 AM



416820-036

A-C MOTOR
 CONNECTION DIAGRAM
 STANDARD 3 LEAD CONNECTED



(N.P. 1575-BA)

416820-036

REV. DESC: LOADED TO BUS, C/R 335225		
REV. LTR: -	VERSION: 00	TDR: 000000538207
FILE: \MGA\00000\682	REVISED: 11:54:06 04/30/2010	
MTL: -	BY: RAGRA	

BALDOR

CONN DIAG - STANDARD 3 LEAD
 SH 1 of 1

Marketing maintained PDF of MN408:

<http://www.baldor.com/support/Literature/Load.ashx/MN408?ManNumber=MN408>

Marketing maintained PDF of MN416:

<http://www.baldor.com/support/Literature/Load.ashx/MN416?ManNumber=MN416>