



Customer information packet

CEM3663T-5

5HP, 3480RPM, 3PH, 60HZ, 184TC, 0628M, TEFC, F1

Class - None

Division - Not Applicable

Specifications

Enclosure	TEFC
Frame	184TC
Frame Material	Iron
Frequency	60.00 Hz
Haz Area Class and Group	None
Haz Area Division	Not Applicable
Motor Letter Type	Three Phase
Output @ Frequency	5.000 HP @ 60 HZ
Phase	3
Synchronous Speed @ Frequency	3600 RPM @ 60 HZ
Voltage @ Frequency	575.0 V @ 60 HZ
Agency Approvals	CURUSEEV NEMA PREMIUM NEMA_PREMIUM UR CSA EEV
Ambient Temperature	40 °C
Auxillary Box	No Auxillary Box
Auxillary Box Lead Termination	None
Base Indicator	Rigid
Bearing Grease Type	Polyrex EM (-20F +300F)
Blower	None
Current @ Voltage	4.700 A @ 575.0 V
Design Code	A
Drip Cover	No Drip Cover
Duty Rating	CONT
Efficiency @ 100% Load	88.5 %
Electrically Isolated Bearing	Not Electrically Isolated
Feedback Device	NO FEEDBACK
Front Face Code	Standard
Front Shaft Indicator	None
Heater Indicator	No Heater

Part detail

Revision	K
Type	AC
Mech. spec.	06F057
Base	
Status	PRD/A
Elec. spec.	06WGX787
Layout	06LYF057
Eff. date	02-26-2025
CD Diagram	CD0006
Poles	02
Leads	3#16
Proprietary	False
Created date	05-08-2015

High Voltage Full Load Amps	4.7 a
Insulation Class	F
Inverter Code	Not Inverter
KVA Code	L
Lifting Lugs	Standard Lifting Lugs
Locked Bearing Indicator	Locked Bearing
Motor Lead Exit	Ko Box
Motor Lead Quantity/Wire Size	3 @ 16 AWG
Motor Lead Termination	Flying Leads
Motor Standards	NEMA
Motor Type	0628M
Mounting Arrangement	F1
Number of Poles	2
Overall Length	15.98 IN
Power Factor	90
Product Family	General Purpose
Pulley End Bearing Type	Ball
Pulley Face Code	C-Face
Pulley Shaft Indicator	Standard
Rodent Screen	None
Service Factor	1.15
Shaft Diameter	1.125 IN
Shaft Extension Location	Pulley End
Shaft Ground Indicator	No Shaft Grounding
Shaft Rotation	Reversible
Shaft Slinger Indicator	No Slinger
Speed	3480 rpm
Speed Code	Single Speed
Starting Method	Direct on line
Thermal Device - Bearing	None
Thermal Device - Winding	None
Vibration Sensor Indicator	No Vibration Sensor
Winding Thermal 1	None
Winding Thermal 2	None

Nameplate**NP3441L**

CAT.NO.	CEM3663T-5						
SPEC.	06F057X787G1						
HP	5						
VOLTS	575						
AMP	4.7						
RPM	3480						
FRAME	184TC		HZ	60		PH	3
SER.F.	1.15	CODE	L	DES	A	CL	F
NEMA-NOM-EFF	88.5	PF	90				
RATING	40C AMB-CONT						
CC	010A						
DE	6206		ODE	6205			
ENCL	TEFC	SN					

VPWM INVERTER READY**CT6-60H(10:1)VT3-60H(20:1)**

AC Induction Motor Performance Data

Record # 50653

Typical performance - not guaranteed values

Winding: 06WGX787-R001		Type: 0628M		Enclosure: TEFC	
Nameplate Data			575 V, 60 Hz: Single Voltage Motor		
Rated Output (HP)	5	Full Load Torque	7.55 LB-FT		
Volts	575	Start Configuration	direct on line		
Full Load Amps	4.7	Breakdown Torque	35.7 LB-FT		
R.P.M.	3480	Pull-up Torque	23.1 LB-FT		
Hz	60	Locked-rotor Torque	27.6 LB-FT		
NEMA Design Code	A	Starting Current	47.9 A		
Service Factor (S.F.)	1.15	No-load Current	1.64 A		
NEMA Nom. Eff.	88.5	Line-line Res. @ 25°C	4.4 Ω		
Rating - Duty	40C	Temp. Rise @ Rated Load	57°C		
S.F. Amps	AMB-CONT	Temp. Rise @ S.F. Load	70°C		
		Locked-rotor Power Factor	51.1		
		Rotor inertia	0.125 LB-FT ²		

Load Characteristics 575 V, 60 Hz, 5 HP

% of Rated Load	25	50	75	100	125	150	S.F.
Power Factor	56	77	86	91	93	94	92
Efficiency	85.6	89.8	90.2	89.3	87.8	86	88.4
Speed	3574	3547	3517	3485	3452	3413	3465
Line amperes	1.96	2.68	3.62	4.64	5.74	6.95	5.3

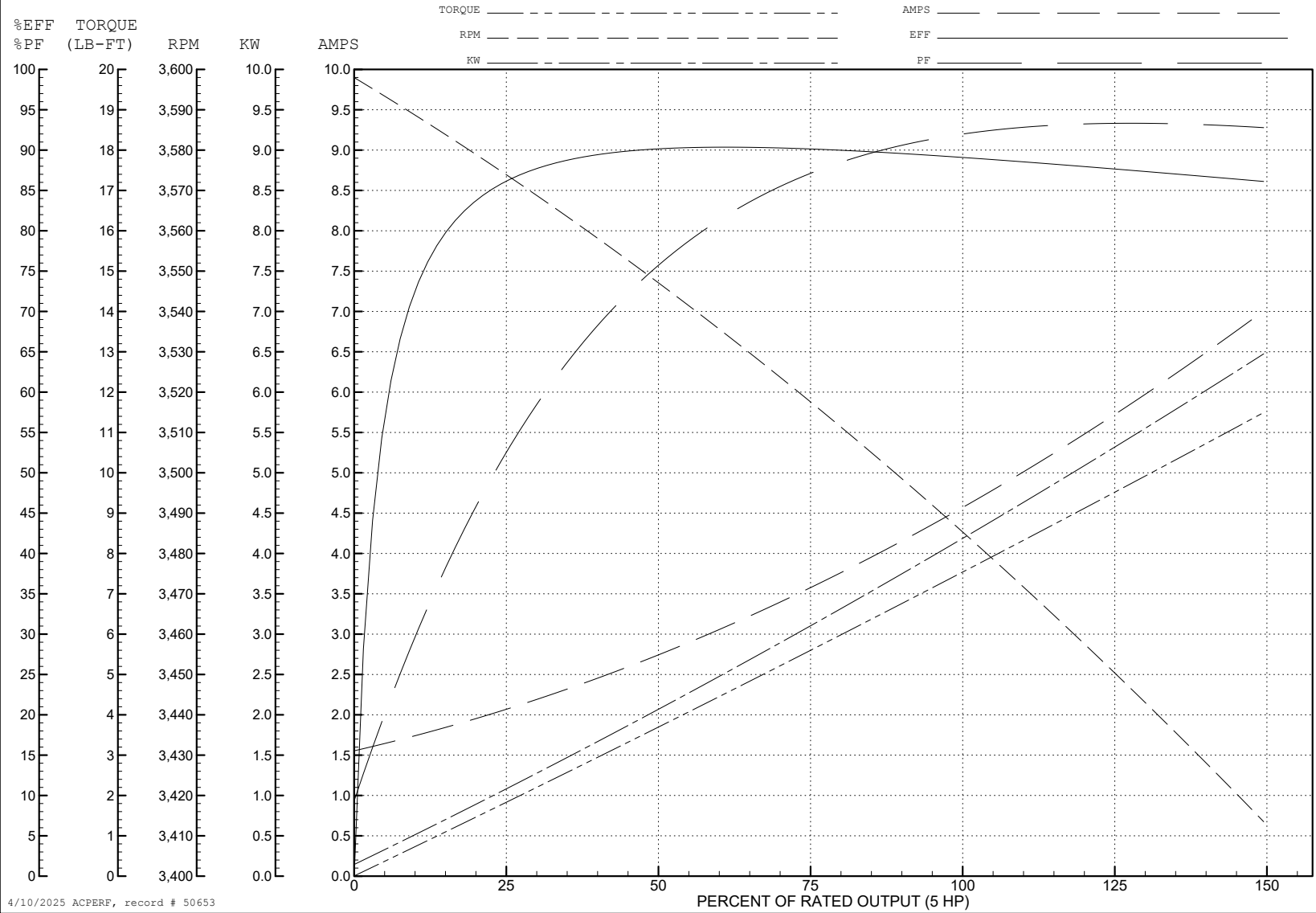
ABB Motors and Mechanical Inc.

WINDING # 06WGX787

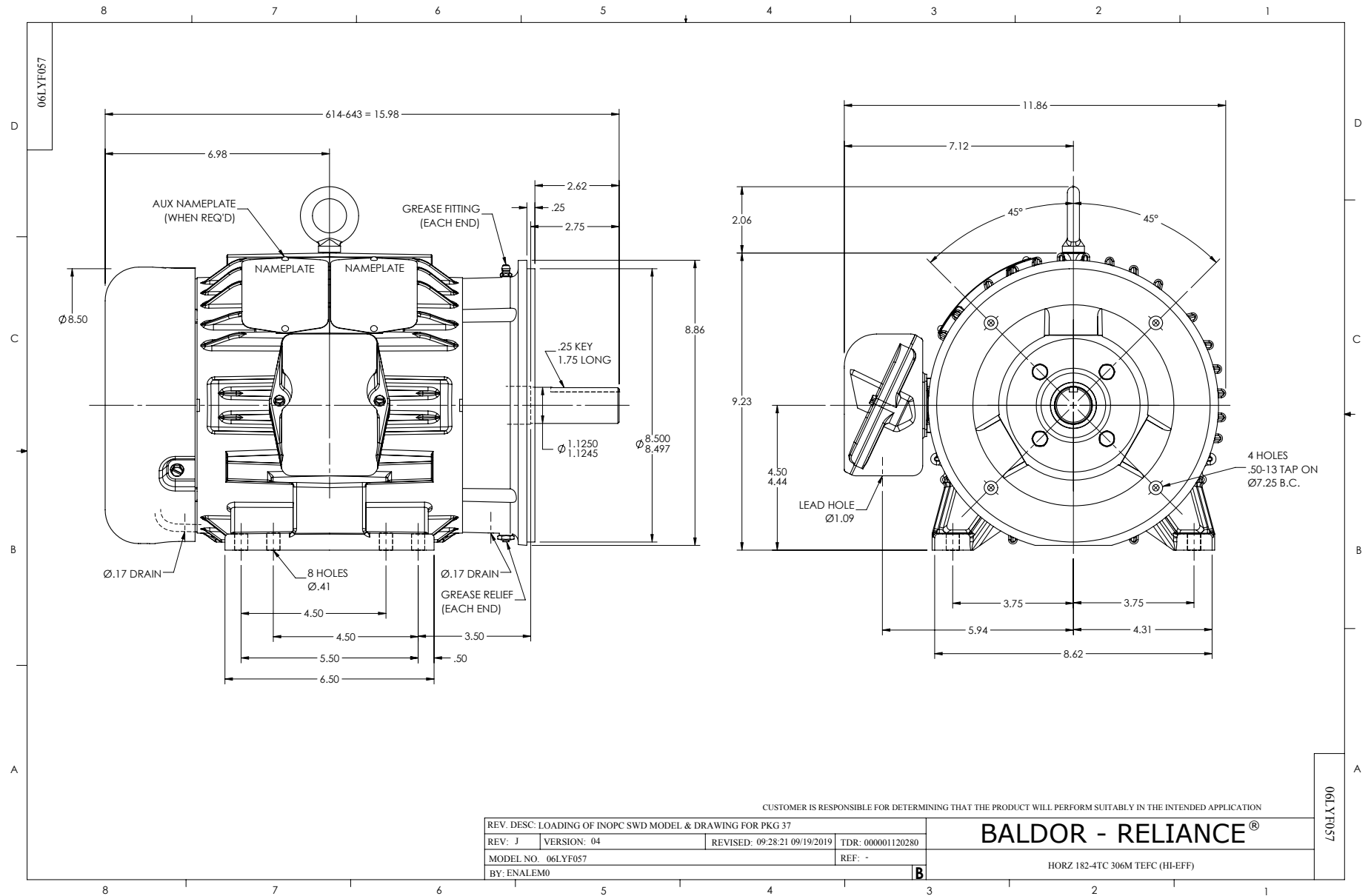
Typical performance - not guaranteed values.

5 HP 3 PH 60 HZ 3480 RPM 575 V 0628M

TORQUES (LB-FT): PO=35.7 PU=23.1 LR=27.6 LRA=47.9



4/10/2025 ACPERF, record # 50653



CD0006



NOTES:

1. THREE LEAD MOTOR MAY BE EITHER WYE CONNECTED OR DELTA CONNECTED.
2. INTERCHANGE ANY TWO LINE LEADS TO REVERSE ROTATION.
3. OPTIONAL THERMOSTATS ARE PROVIDED WHEN SPECIFIED.
4. ACTUAL NUMBER OF INTERNAL PARALLEL CIRCUITS MAY VARY.
5. LEAD COLORS ARE OPTIONAL. LEADS MUST BE NUMBERED AS SHOWN.

CD0006

REV. DESC: ADD CLASS CONN00000007		
REV. LTR: E	VERSION: 01	TDR: 000001099922
FILE: \AAA\00005\141	REVISED: 10:24:49 02/19/2019	BY: ENBRIRO
MTL: -	© □	

BALDOR - RELIANCE®

3PH, SV, 3 LEADS, WYE OR DELTA CONNECTED

SH 1 of 1