



Customer information packet

CEM4104T-5

30HP, 1775RPM, 3PH, 60HZ, 286TC, 1056M, TEFC, F

Class - None

Division - Not Applicable

Specifications

Enclosure	TEFC
Frame	286TC
Frame Material	Iron
Frequency	60.00 Hz
Haz Area Class and Group	None
Haz Area Division	Not Applicable
Motor Letter Type	Three Phase
Output @ Frequency	30.000 HP @ 60 HZ
Phase	3
Synchronous Speed @ Frequency	1800 RPM @ 60 HZ
Voltage @ Frequency	575.0 V @ 60 HZ
Agency Approvals	CSA EEV NEMA PREMIUM NEMA_PREMIUM UR
Ambient Temperature	40 °C
Auxillary Box	No Auxillary Box
Auxillary Box Lead Termination	None
Base Indicator	Rigid
Bearing Grease Type	Polyrex EM (-20F +300F)
Blower	None
Current @ Voltage	31.000 A @ 575.0 V
Design Code	A
Drip Cover	No Drip Cover
Duty Rating	CONT
Efficiency @ 100% Load	93.6 %
Electrically Isolated Bearing	Not Electrically Isolated
Feedback Device	NO FEEDBACK
Front Face Code	Standard
Front Shaft Indicator	None
Heater Indicator	No Heater
High Voltage Full Load Amps	31.0 a

Part detail

Revision	N
Type	AC
Mech. spec.	10C152
Base	
Status	PRD/A
Elec. spec.	10WGZ313
Layout	10LYC152
Eff. date	06-27-2024
CD Diagram	CD0006
Poles	04
Leads	3#10
Proprietary	False
Created date	11-04-2015

Insulation Class	F
Inverter Code	Inverter Ready
KVA Code	J
Lifting Lugs	Standard Lifting Lugs
Locked Bearing Indicator	Locked Bearing
Motor Lead Exit	Ko Box
Motor Lead Quantity/Wire Size	3 @ 12 AWG
Motor Lead Termination	Flying Leads
Motor Standards	NEMA
Motor Type	1056M
Mounting Arrangement	F1
Number of Poles	4
Overall Length	27.76 IN
Power Factor	78
Product Family	General Purpose
Pulley End Bearing Type	Ball
Pulley Face Code	C-Face
Pulley Shaft Indicator	Standard
Rodent Screen	None
Service Factor	1.15
Shaft Diameter	1.875 IN
Shaft Extension Location	Pulley End
Shaft Ground Indicator	No Shaft Grounding
Shaft Rotation	Reversible
Shaft Slinger Indicator	Shaft Slinger
Speed	1775 rpm
Speed Code	Single Speed
Starting Method	Direct on line
Thermal Device - Bearing	None
Thermal Device - Winding	None
Vibration Sensor Indicator	No Vibration Sensor
Winding Thermal 1	None
Winding Thermal 2	None

Nameplate

NP3443L

CAT.NO.	CEM4104T-5	CUST. P/N				ENCL	TEFC
SPEC.	10C152Z313G1	CC	010A	FRAME	286TC	SER.NO.	
HP	30	CLASS		F	HZ	60	
R.P.M.	1775	PH	3	DES	A		
VOLTS	575	CODE		J	ODE BRG	6309	DE BRG 6311
AMPS	31						
RATING	40C AMB-CONT	NEMA NOM. EFF.			93.6	GREASE	POLYREX EM
P.F.	78	SER.F.	1.15	VPWM INVERTER READY			
HTR-VOLTS		HTR-AMPS		HTR-WATTS			

AC Induction Motor Performance Data

Record # 46990

Typical performance - not guaranteed values

Winding: 10WGZ313-R001		Type: 1056M		Enclosure: TEFC	
Nameplate Data			575 V, 60 Hz: Single Voltage Motor		
Rated Output (HP)	30	Full Load Torque	88.6 LB-FT		
Volts	575	Start Configuration	direct on line		
Full Load Amps	31	Breakdown Torque	338 LB-FT		
R.P.M.	1775	Pull-up Torque	146 LB-FT		
Hz	60	Locked-rotor Torque	183 LB-FT		
NEMA Design Code	A	Starting Current	222 A		
Service Factor (S.F.)	1.15	No-load Current	15.2 A		
NEMA Nom. Eff.	93.6	Line-line Res. @ 25°C	0.308 Ω		
Rating - Duty	40C	Temp. Rise @ Rated Load	64°C		
S.F. Amps	AMB-CONT	Temp. Rise @ S.F. Load	76°C		
		Locked-rotor Power Factor	31		
		Rotor inertia	4.47 LB-FT ²		

Load Characteristics 575 V, 60 Hz, 30 HP

% of Rated Load	25	50	75	100	125	150	S.F.
Power Factor	39	61	72	78	81	84	78
Efficiency	87.4	91.9	93.2	93.6	93.5	92.7	93
Speed	1792	1788	1783	1777	1771	1763	1777
Line amperes	16.7	20.2	25.2	30.6	36.9	44.5	35.5

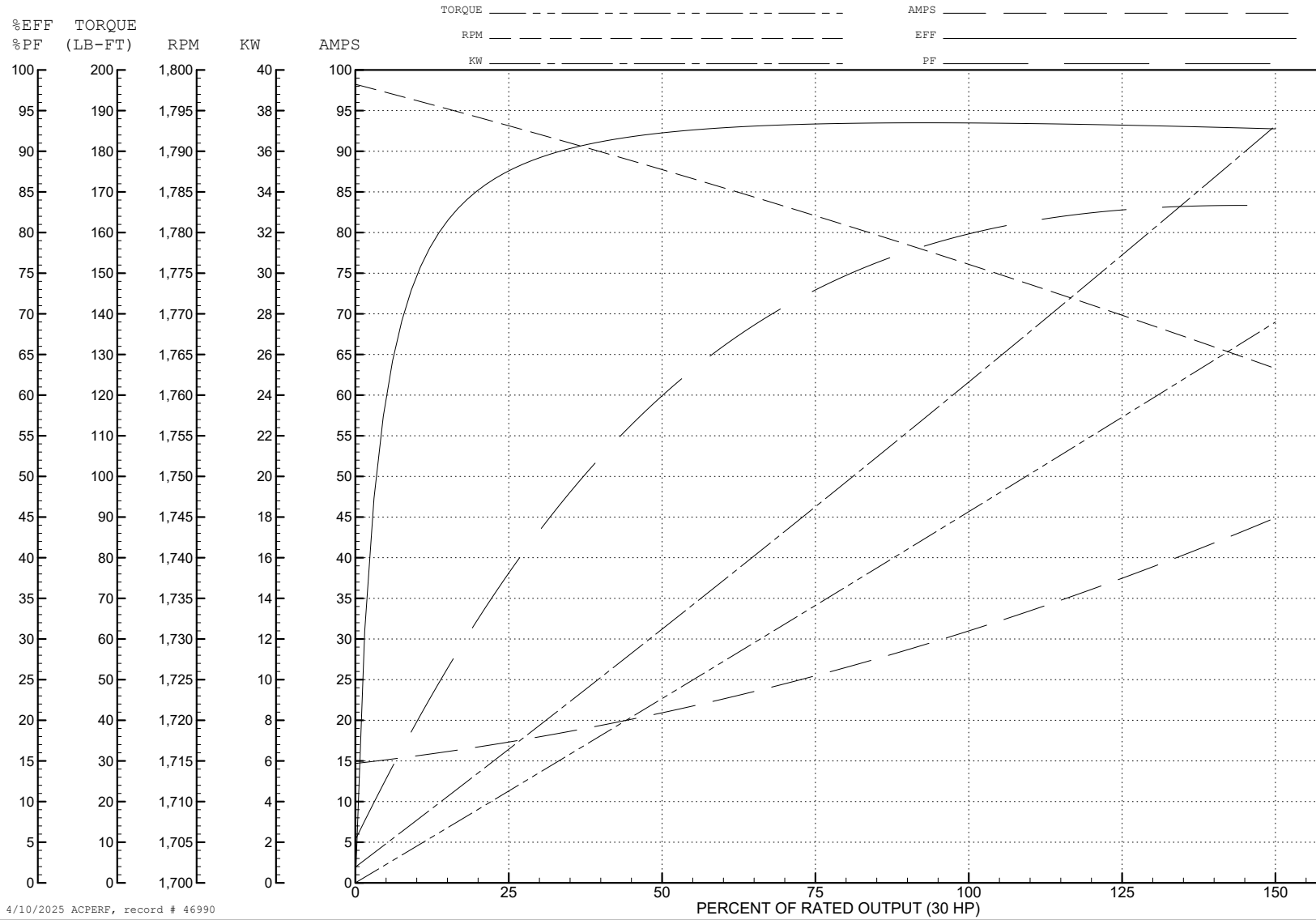
ABB Motors and Mechanical Inc.

WINDING # 10WGZ313

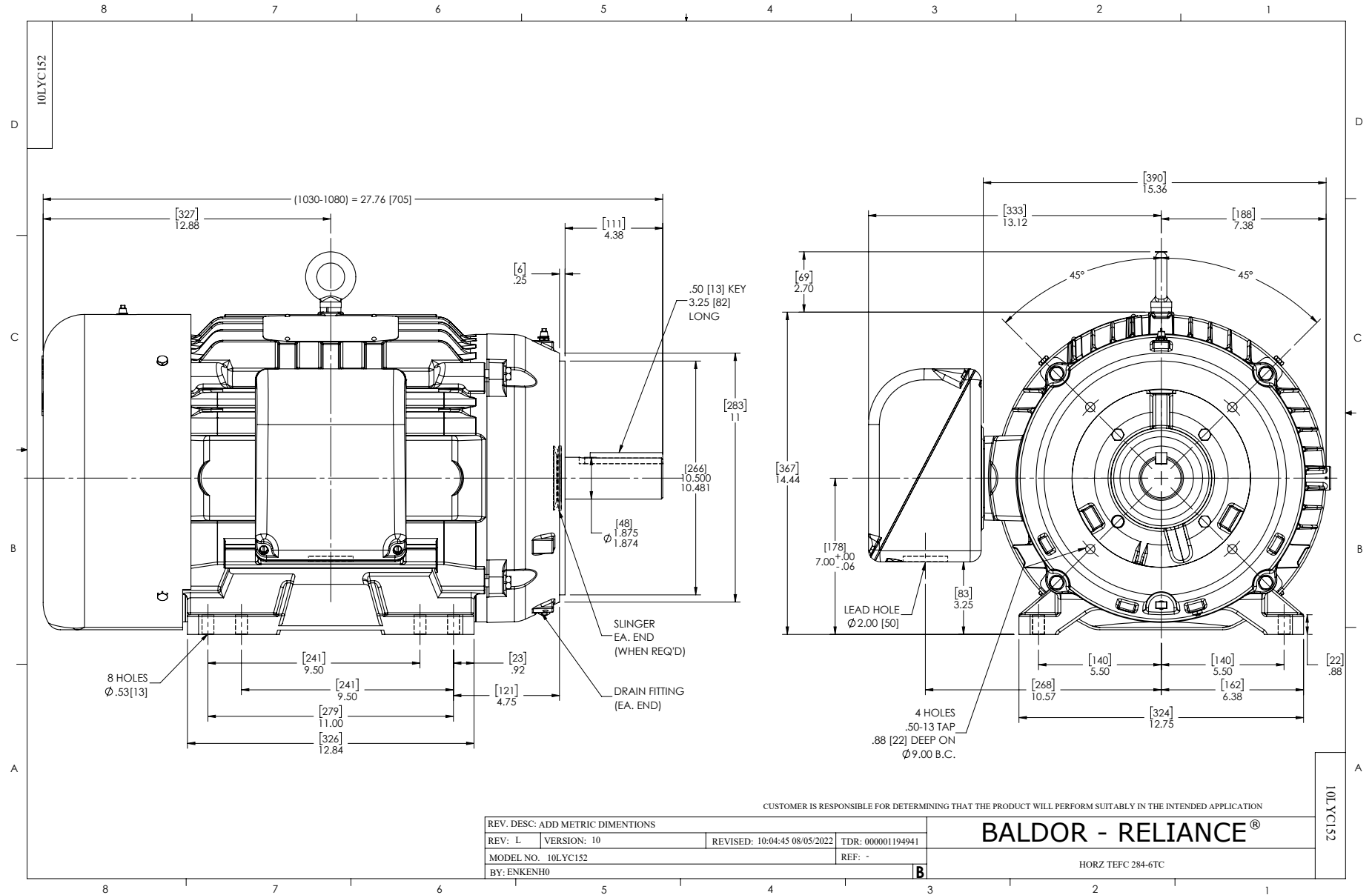
Typical performance - not guaranteed values.

30 HP 3 PH 60 HZ 1775 RPM 575 V 1056M

TORQUES (LB-FT): PO=338 PU=146 LR=183 LRA=222



4/10/2025 ACPERF, record # 46990



CD0006



NOTES:

1. THREE LEAD MOTOR MAY BE EITHER WYE CONNECTED OR DELTA CONNECTED.
2. INTERCHANGE ANY TWO LINE LEADS TO REVERSE ROTATION.
3. OPTIONAL THERMOSTATS ARE PROVIDED WHEN SPECIFIED.
4. ACTUAL NUMBER OF INTERNAL PARALLEL CIRCUITS MAY VARY.
5. LEAD COLORS ARE OPTIONAL. LEADS MUST BE NUMBERED AS SHOWN.

CD0006

REV. DESC: ADD CLASS CONN00000007		
REV. LTR: E	VERSION: 01	TDR: 000001099922
FILE: \AAA\00005\141	REVISED: 10:24:49 02/19/2019	BY: ENBRIRO
MTL: -	© □	

BALDOR - RELIANCE®

3PH, SV, 3 LEADS, WYE OR DELTA CONNECTED

SH 1 of 1