

**BALDOR® • RELIANCE** 

**Product Information Packet**

**CFSWDM23933T-E**

**15HP, 1765RPM, 3PH, 60HZ, 254TC, 3956M, TEFC, F**

Part Detail							
Revision:	M	Status:	PRD/A	Change #:		Proprietary:	No
Type:	AC	Elec. Spec:	39WGX682	CD Diagram:	CD0005	Mfg Plant:	
Mech. Spec:	39E646	Layout:	39LYE646	Poles:	04	Created Date:	09-08-2016
Base:	RG	Eff. Date:	04-05-2018	Leads:	9#12		

Specs			
Catalog Number:	CFSWDM23933T-E	Insulation Class:	H
Enclosure:	TEFC	Inverter Code:	Inverter Ready
Frame:	254TC	KVA Code:	G
Frame Material:	Stainless Steel	Lifting Lugs:	Standard Lifting Lugs
Output @ Frequency:	15.000 HP @ 60 HZ	Locked Bearing Indicator:	Locked Bearing
Synchronous Speed @ Frequency:	1800 RPM @ 60 HZ	Motor Lead Quantity/Wire Size:	9 @ 12 AWG
Voltage @ Frequency:	460.0 V @ 60 HZ	Motor Lead Exit:	Ko Box
	230.0 V @ 60 HZ	Motor Lead Termination:	Flying Leads
XP Class and Group:	None	Motor Type:	3956M
XP Division:	Not Applicable	Mounting Arrangement:	F1
Agency Approvals:	CSA	Power Factor:	86
	UR	Product Family:	WD All SS Encapsulated
Auxillary Box:	No Auxillary Box	Pulley End Bearing Type:	Sealed Bearing
Auxillary Box Lead Termination:	None	Pulley Face Code:	C-Face
Base Indicator:	Rigid	Pulley Shaft Indicator:	Standard
Bearing Grease Type:	Polyrex EM (-20F +300F)	Rodent Screen:	None
Blower:	None	Shaft Extension Location:	Pulley End
Current @ Voltage:	17.500 A @ 460.0 V	Shaft Ground Indicator:	No Shaft Grounding

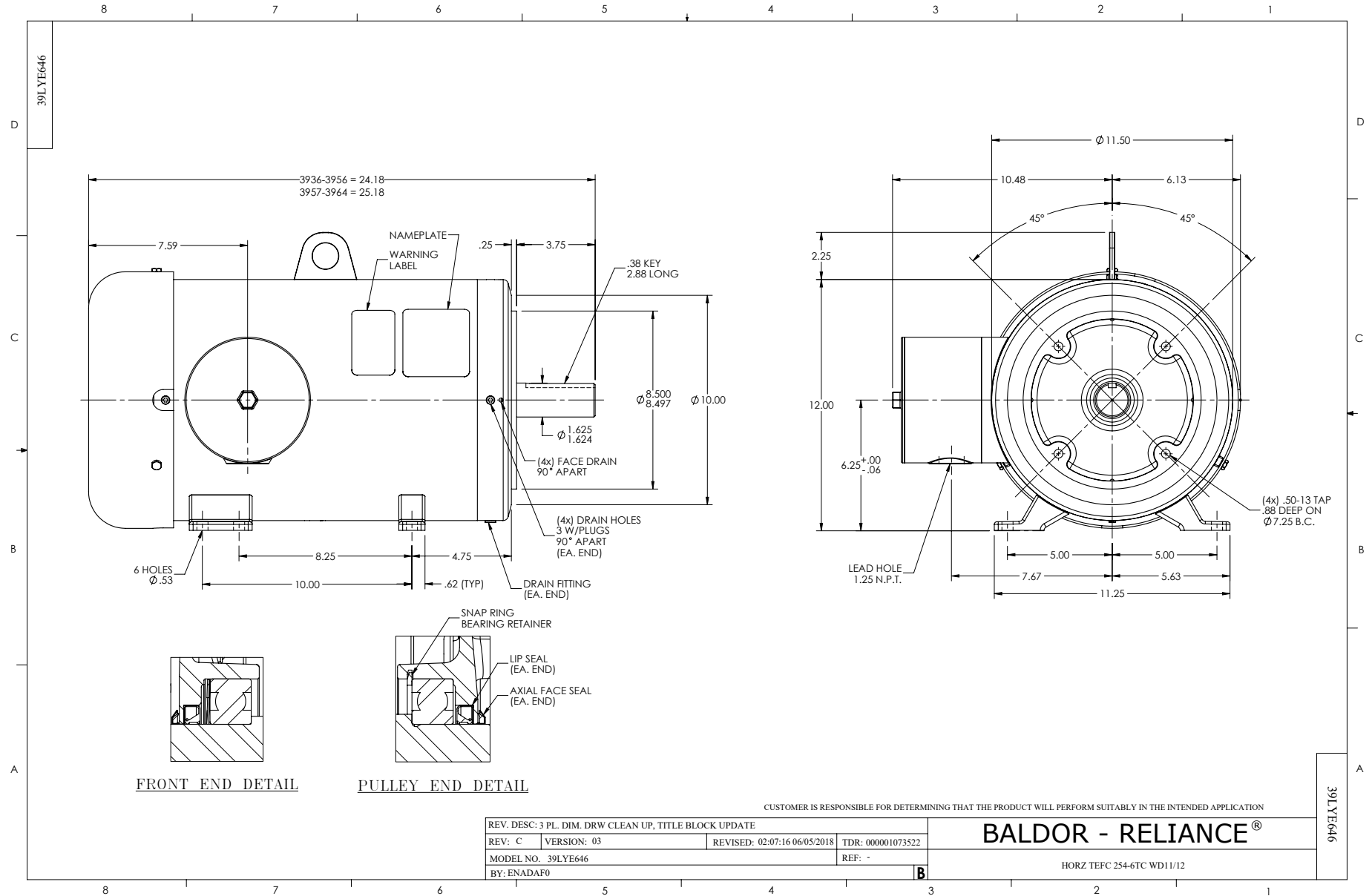
	35.000 A @ 230.0 V	<b>Shaft Rotation:</b>	Reversible
	38.000 A @ 208.0 V	<b>Shaft Slinger Indicator:</b>	No Slinger
<b>Design Code:</b>	A	<b>Speed Code:</b>	Single Speed
<b>Drip Cover:</b>	No Drip Cover	<b>Motor Standards:</b>	NEMA
<b>Duty Rating:</b>	CONT	<b>Starting Method:</b>	Direct on line
<b>Electrically Isolated Bearing:</b>	Not Electrically Isolated	<b>Thermal Device - Bearing:</b>	None
<b>Feedback Device:</b>	NO FEEDBACK	<b>Thermal Device - Winding:</b>	None
<b>Front Face Code:</b>	Standard	<b>Vibration Sensor Indicator:</b>	No Vibration Sensor
<b>Front Shaft Indicator:</b>	None	<b>Winding Thermal 1:</b>	None
<b>Heater Indicator:</b>	No Heater	<b>Winding Thermal 2:</b>	None

<b>Nameplate NP1953A01</b>										
<b>CAT.NO.</b>	CFSWDM23933T-E									
<b>SPEC.</b>	39E646X682G1									
<b>HP</b>	15									
<b>VOLTS</b>	230/460									
<b>AMP</b>	35/17.5									
<b>RPM</b>	1765									
<b>FRAME</b>	254TC				<b>HZ</b>	60			<b>PH</b>	3
<b>SER.F.</b>	1.15		<b>CODE</b>	G	<b>DES</b>	A		<b>CLASS</b>	H	
<b>NEMA-NOM-EFF</b>	92.4			<b>PF</b>	86					
<b>RATING</b>	40C AMB-CONT									
<b>CC</b>	010A				<b>USABLE AT 208V</b>			38		
<b>DE</b>	6309			<b>ODE</b>	6309					
<b>ENCL</b>	TEFC		<b>SN</b>							
	2:1 CT/10:1 VT									

Parts List		
Part Number	Description	Quantity
SA327006	SA 39E646X682G1	1.000 EA
RA314916	RA 39E646X682G1	1.000 EA
09FN3001D01SP	EXTERNAL FAN, PLASTIC	1.000 EA
39CB1001A01P	39 MID-SECTION, - 3PC. BOX W/5.75-12 THD	1.000 EA
RM1070A79	O-RING, -051 VITON/FKM .070CS X 5.489ID	1.000 EA
10XN2520S10	1/4-20X 5/8 HEX HD CAP SS	4.000 EA
WD1000B16	T&B CX70TN TERMINAL	1.000 EA
10XN2520G08	25-20 X.50 - PAINTED GREEN	1.000 EA
39EP1904A02P	FREP ENCL 309 BRG (STAINLESS)	1.000 EA
RM1070A80	O-RING, VITON/FKM .070CS X 10.800ID	1.000 EA
HW4600F81	45 X 68 X 10 LIP SEAL, GRAPHITE INFUSED	1.000 EA
HW4600F80	45 X 62 X 4.5 AFS SEAL, GRAPHITE INFUSED	1.000 EA
HW4500S33	1/8 NPT STAINLESS #304 SS PLUG	3.000 EA
HA4002A03	#304 S.S. DRAIN FITTING, .125 NPT (.44 H	1.000 EA
HW4500S33	1/8 NPT STAINLESS #304 SS PLUG	3.000 EA
HA4002A03	#304 S.S. DRAIN FITTING, .125 NPT (.44 H	1.000 EA
HW4600F81	45 X 68 X 10 LIP SEAL, GRAPHITE INFUSED	1.000 EA
HW4600F80	45 X 62 X 4.5 AFS SEAL, GRAPHITE INFUSED	1.000 EA
HW5100A11	W3917-042 WVY WSHR (WB)	1.000 EA
39EP1905A01P	PUEP ENCL 309 BRG (STAINLESS)	1.000 EA
RM1070A80	O-RING, VITON/FKM .070CS X 10.800ID	1.000 EA
RM1070A78	O-RING, -012 VITON/FKM .070CS X .364ID	4.000 EA
39FH4004A01P	POLISHED 304 S.S. FAN COVER SPUN W/ SLOT	1.000 EA
10XN2520FS08	HEX HD CAP SCREW 1/4-20 X 1/2 SS FOOD SA	3.000 EA

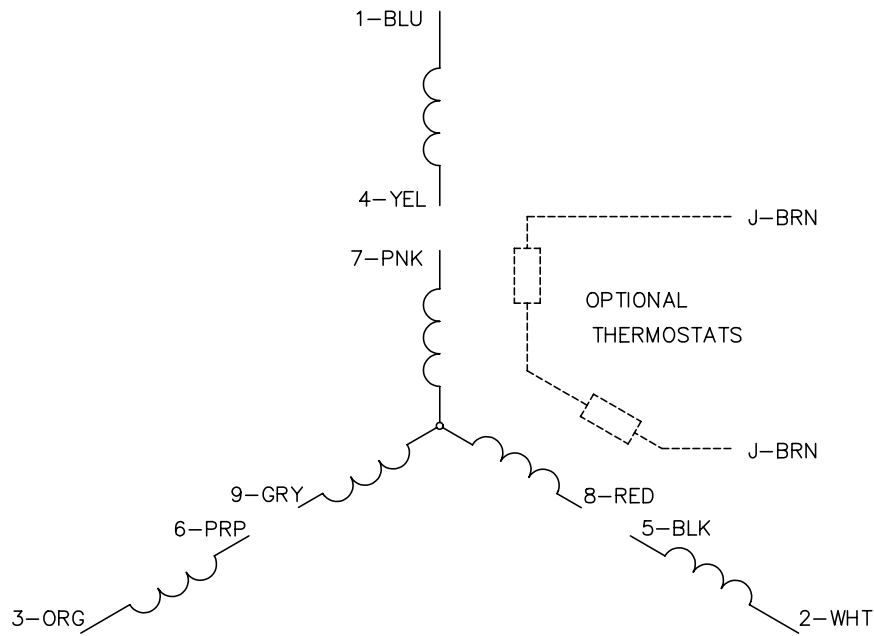
<b>Parts List (continued)</b>		
<b>Part Number</b>	<b>Description</b>	<b>Quantity</b>
HW1001S25	WASHER, 1/4 SPLT LK, STAINLESS STEEL	3.000 EA
39CB1500A01P	39 LID, 3 PC. BOX STAINLESS	1.000 EA
RM1070A79	O-RING, -051 VITON/FKM .070CS X 5.489ID	1.000 EA
HW2502G25	#303 SS,SQ KEY 3/8 X 2.880	1.000 EA
MJ5001A27	32220KN GRAY SEALER *MIN BUY 4 QTS=1GAL	0.005 QT
MJ5004A93	FOOD GRADE (H1 RATED) ANTISEIZE THRD COM	0.005 EA
HA5027A07	85XU1208S08 FACE DRAIN PINS BAGGED	1.000 EA
MJ1000A02	GREASE, POLYREX EM EXXON (USe 4824-15A)	0.030 LB
HA3105FS13	THRUBOLT, 3/8-16 X 16.250 SS FOOD SAFE	4.000 EA
HW2502F08	KEY, 5/16 SQ X .875 303 SS	1.000 EA
51XB1214S20	12-14X1.25 HXWSSLD SERTYB, SS	1.000 EA
FE-0000013	ZRTG FE ASSEMBLY	1.000 EA
WD5603A01	KIT, CLOSED-END LEAD SPLICE (18-14GA)	1.000 EA
PE-0000003	ZRTG PE ASSEMBLY	1.000 EA
39PA1000	PACKAGING GROUP 39 PRINT	1.000 EA
MN416A01	TAG-INSTAL-MAINT no wire (1200/bx) 5/18	1.000 EA

No performance data has been  
assigned to this product.

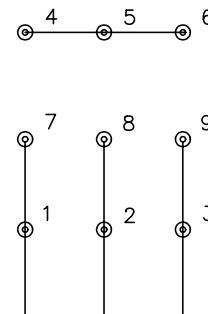




CD0005

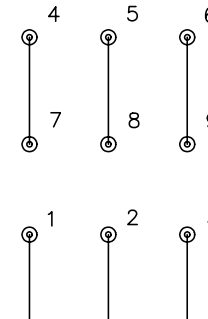


LOW VOLTAGE  
(2Y)



LINE

HIGH VOLTAGE  
(1Y)



LINE

NOTES:

1. INTERCHANGE ANY TWO LINE LEADS TO REVERSE ROTATION.
2. OPTIONAL THERMOSTATS ARE PROVIDED WHEN SPECIFIED.
3. ACTUAL NUMBER OF INTERNAL PARALLEL CIRCUITS MAY BE A MULTIPLE OF THOSE SHOWN ABOVE.
4. LEAD COLORS ARE OPTIONAL. LEADS MUST ALWAYS BE NUMBERED AS SHOWN.

REV. DESC: REVISE TO SHOW OPTIONAL COLORS

REV. LTR: E BY: JLP

REVISED: 01/19/99 10:15

TDR: 0171435

90000

FILE: AAA00005140

MDL: -

MTL: -

**BALDOR ELECTRIC Co.**

3PH, DV, 9 LEADS

CD0005

Marketing maintained PDF of MN416:

<http://www.baldor.com/support/Literature/Load.ashx/MN416?ManNumber=MN416>