

**BALDOR® • RELIANCE** 

**Product Information Packet**

**CFSWDM23994T-E**

**15HP,3520RPM,3PH,60HZ,254TC,3952M,TEFC,F**

Part Detail							
Revision:	H	Status:	PRD/A	Change #:		Proprietary:	No
Type:	AC	Elec. Spec:	39WGX633	CD Diagram:	CD0005	Mfg Plant:	
Mech. Spec:	39E646	Layout:	39LYE646	Poles:	02	Created Date:	04-17-2017
Base:	RG	Eff. Date:	04-05-2018	Leads:	9#12		

Specs			
Catalog Number:	CFSWDM23994T-E	Insulation Class:	H
Enclosure:	TEFC	Inverter Code:	Inverter Ready
Frame:	254TC	KVA Code:	J
Frame Material:	Stainless Steel	Lifting Lugs:	Standard Lifting Lugs
Output @ Frequency:	15.000 HP @ 60 HZ	Locked Bearing Indicator:	Locked Bearing
Synchronous Speed @ Frequency:	3600 RPM @ 60 HZ	Motor Lead Quantity/Wire Size:	9 @ 12 AWG
Voltage @ Frequency:	230.0 V @ 60 HZ	Motor Lead Exit:	Ko Box
	460.0 V @ 60 HZ	Motor Lead Termination:	Flying Leads
XP Class and Group:	None	Motor Type:	3952M
XP Division:	Not Applicable	Mounting Arrangement:	F1
Agency Approvals:	UR	Power Factor:	92
	CSA	Product Family:	WD All SS Encapsulated
Auxillary Box:	No Auxillary Box	Pulley End Bearing Type:	Sealed Bearing
Auxillary Box Lead Termination:	None	Pulley Face Code:	C-Face
Base Indicator:	Rigid	Pulley Shaft Indicator:	Standard
Bearing Grease Type:	Polyrex EM (-20F +300F)	Rodent Screen:	None
Blower:	None	Shaft Extension Location:	Pulley End
Current @ Voltage:	16.500 A @ 460.0 V	Shaft Ground Indicator:	No Shaft Grounding

	33.000 A @ 230.0 V	<b>Shaft Rotation:</b>	Reversible
<b>Design Code:</b>	A	<b>Shaft Slinger Indicator:</b>	No Slinger
<b>Drip Cover:</b>	No Drip Cover	<b>Speed Code:</b>	Single Speed
<b>Duty Rating:</b>	CONT	<b>Motor Standards:</b>	NEMA
<b>Electrically Isolated Bearing:</b>	Not Electrically Isolated	<b>Starting Method:</b>	Direct on line
<b>Feedback Device:</b>	NO FEEDBACK	<b>Thermal Device - Bearing:</b>	None
<b>Front Face Code:</b>	Standard	<b>Thermal Device - Winding:</b>	None
<b>Front Shaft Indicator:</b>	None	<b>Vibration Sensor Indicator:</b>	No Vibration Sensor
<b>Heater Indicator:</b>	No Heater	<b>Winding Thermal 1:</b>	None
		<b>Winding Thermal 2:</b>	None

<b>Nameplate NP1953A01</b>										
<b>CAT.NO.</b>	CFSWDM23994T-E									
<b>SPEC.</b>	39E646X633G1									
<b>HP</b>	15									
<b>VOLTS</b>	230/460									
<b>AMP</b>	33/16.5									
<b>RPM</b>	3520									
<b>FRAME</b>	254TC				<b>HZ</b>	60			<b>PH</b>	3
<b>SER.F.</b>	1.15		<b>CODE</b>	J	<b>DES</b>	A		<b>CLASS</b>	H	
<b>NEMA-NOM-EFF</b>	91			<b>PF</b>	92					
<b>RATING</b>	40C AMB-CONT									
<b>CC</b>	010A				<b>USABLE AT 208V</b>					
<b>DE</b>	6309			<b>ODE</b>	6309					
<b>ENCL</b>	TEFC		<b>SN</b>							
	2:1 CT/10:1 VT									

Parts List		
Part Number	Description	Quantity
SA341994	SA 39E646X633G1	1.000 EA
RA325568	RA 39E646X633G1	1.000 EA
09FN3001C01	EXTERNAL FAN, PLASTIC	1.000 EA
39CB1001A01P	39 MID-SECTION, - 3PC. BOX W/5.75-12 THD	1.000 EA
RM1070A79	O-RING, -051 VITON/FKM .070CS X 5.489ID	1.000 EA
10XN2520S10	1/4-20X 5/8 HEX HD CAP SS	4.000 EA
WD1000B16	T&B CX70TN TERMINAL	1.000 EA
10XN2520G08	25-20 X.50 - PAINTED GREEN	1.000 EA
39EP1904A02P	FREP ENCL 309 BRG (STAINLESS)	1.000 EA
RM1070A80	O-RING, VITON/FKM .070CS X 10.800ID	1.000 EA
HW4600F81	45 X 68 X 10 LIP SEAL, GRAPHITE INFUSED	1.000 EA
HW4600F80	45 X 62 X 4.5 AFS SEAL, GRAPHITE INFUSED	1.000 EA
HW4500S33	1/8 NPT STAINLESS #304 SS PLUG	3.000 EA
HA4002A03	#304 S.S. DRAIN FITTING, .125 NPT (.44 H	1.000 EA
HW4500S33	1/8 NPT STAINLESS #304 SS PLUG	3.000 EA
HA4002A03	#304 S.S. DRAIN FITTING, .125 NPT (.44 H	1.000 EA
HW4600F81	45 X 68 X 10 LIP SEAL, GRAPHITE INFUSED	1.000 EA
HW4600F80	45 X 62 X 4.5 AFS SEAL, GRAPHITE INFUSED	1.000 EA
HW5100A11	W3917-042 WVY WSHR (WB)	1.000 EA
39EP1905A01P	PUEP ENCL 309 BRG (STAINLESS)	1.000 EA
RM1070A80	O-RING, VITON/FKM .070CS X 10.800ID	1.000 EA
RM1070A78	O-RING, -012 VITON/FKM .070CS X .364ID	4.000 EA
39FH4004A01P	POLISHED 304 S.S. FAN COVER SPUN W/ SLOT	1.000 EA
10XN2520FS08	HEX HD CAP SCREW 1/4-20 X 1/2 SS FOOD SA	3.000 EA

<b>Parts List (continued)</b>		
<b>Part Number</b>	<b>Description</b>	<b>Quantity</b>
HW1001S25	WASHER, 1/4 SPLT LK, STAINLESS STEEL	3.000 EA
39CB1500A01P	39 LID, 3 PC. BOX STAINLESS	1.000 EA
RM1070A79	O-RING, -051 VITON/FKM .070CS X 5.489ID	1.000 EA
HW2502G25	#303 SS,SQ KEY 3/8 X 2.880	1.000 EA
MJ5001A27	32220KN GRAY SEALER *MIN BUY 4 QTS=1GAL	0.005 QT
MJ5004A93	FOOD GRADE (H1 RATED) ANTISEIZE THRD COM	0.005 EA
HA5027A07	85XU1208S08 FACE DRAIN PINS BAGGED	1.000 EA
MJ1000A02	GREASE, POLYREX EM EXXON (USe 4824-15A)	0.030 LB
HA3105FS13	THRUBOLT, 3/8-16 X 16.250 SS FOOD SAFE	4.000 EA
HW2502F08	KEY, 5/16 SQ X .875 303 SS	1.000 EA
51XB1214S20	12-14X1.25 HXWSSLD SERTYB, SS	1.000 EA
FE-0000013	ZRTG FE ASSEMBLY	1.000 EA
PE-0000003	ZRTG PE ASSEMBLY	1.000 EA
WD5603A01	KIT, CLOSED-END LEAD SPLICE (18-14GA)	1.000 EA
LB1417	LABEL CARTON 6X4 PERFORATED BLANK ROLLS	1.000 EA
39PA1000	PACKAGING GROUP 39 PRINT	1.000 EA
MN416A01	TAG-INSTAL-MAINT no wire (1200/bx) 5/18	1.000 EA

**AC Induction Motor Performance Data**

Record # 63884 - Typical performance - not guaranteed values

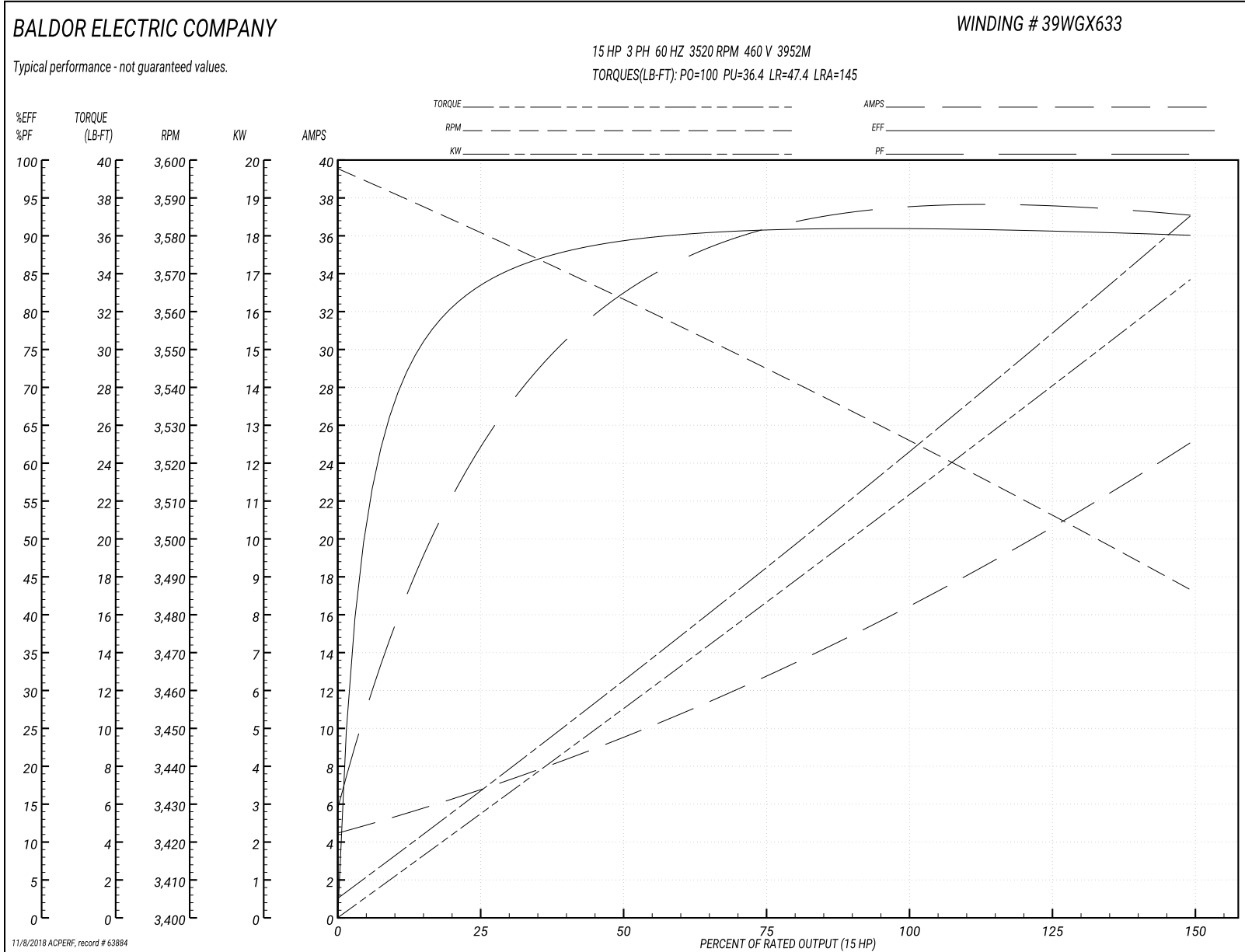
<b>Winding:</b> 39WGX633-R007	<b>Type:</b> 3952M	<b>Enclosure:</b> TEFC
-------------------------------	--------------------	------------------------

Nameplate Data				460 V, 60 Hz: High Voltage Connection	
Rated Output (HP)	15			Full Load Torque	22.1 LB-FT
Volts	230/460			Start Configuration	direct on line
Full Load Amps	33/16.5			Breakdown Torque	100 LB-FT
R.P.M.	3520			Pull-up Torque	36.4 LB-FT
Hz	60	Phase	3	Locked-rotor Torque	47.4 LB-FT
NEMA Design Code	A	KVA Code	J	Starting Current	145 A
Service Factor (S.F.)	1.15			No-load Current	4.77 A
NEMA Nom. Eff.	91	Power Factor	92	Line-line Res. @ 25°C	0.467 Ω
Rating - Duty	40C AMB-CONT			Temp. Rise @ Rated Load	73°C
S.F. Amps				Temp. Rise @ S.F. Load	87°C
				Locked-rotor Power Factor	27.2
				Rotor inertia	1.33 LB-FT <sup>2</sup>

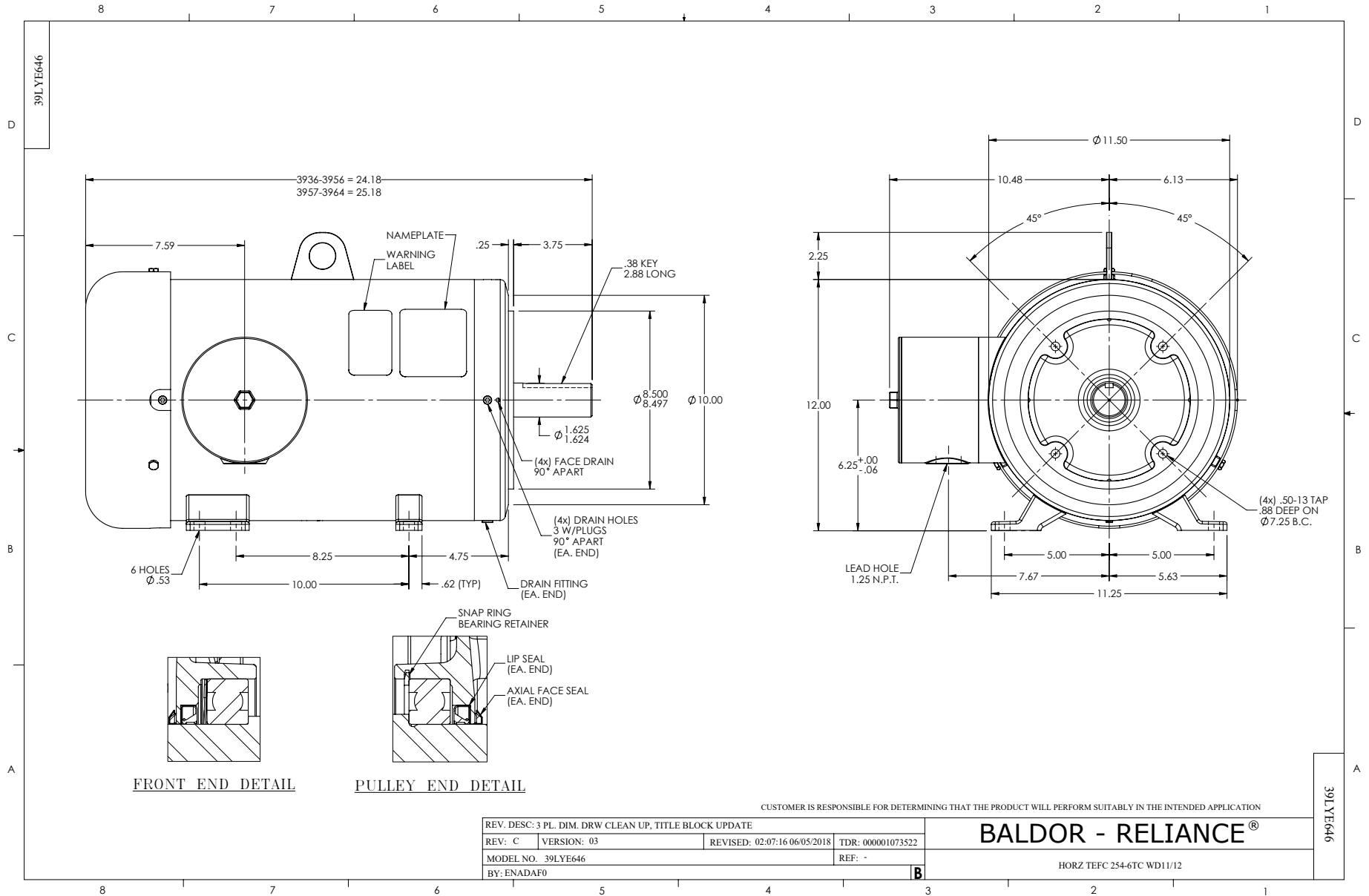
Load Characteristics 460 V, 60 Hz, 15 HP

% of Rated Load	25	50	75	100	125	150	S.F.
Power Factor	66	84	90	92	93	93	93
Efficiency	83.9	89.6	91.1	91.3	90.8	90.1	91
Speed	3579	3563	3546	3528	3507	3486	3515
Line amperes	6.39	9.25	12.8	16.5	20.6	24.9	19

Performance Graph at 460V, 60Hz, 15.0HP Typical performance - Not guaranteed values







CD0005

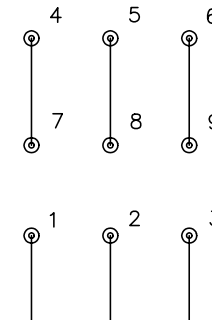


LOW VOLTAGE  
(2Y)



LINE

HIGH VOLTAGE  
(1Y)



LINE

NOTES:

1. INTERCHANGE ANY TWO LINE LEADS TO REVERSE ROTATION.
2. OPTIONAL THERMOSTATS ARE PROVIDED WHEN SPECIFIED.
3. ACTUAL NUMBER OF INTERNAL PARALLEL CIRCUITS MAY BE A MULTIPLE OF THOSE SHOWN ABOVE.
4. LEAD COLORS ARE OPTIONAL. LEADS MUST ALWAYS BE NUMBERED AS SHOWN.

REV. DESC: REVISE TO SHOW OPTIONAL COLORS			
REV. LTR: E	BY: JLP	REVISED: 01/19/99 10:15	TDR: 0171435
9000D		FILE: AAA00005140	MDL: -
		MTL: -	

**BALDOR ELECTRIC Co.**

3PH, DV, 9 LEADS

CD0005

Marketing maintained PDF of MN416:

<http://www.baldor.com/support/Literature/Load.ashx/MN416?ManNumber=MN416>