

**BALDOR® • RELIANCE™**

---

# Customer information packet

## CL1408TM

3HP, 1725RPM, 1PH, 60HZ, 184TC, 3634LC, OPEN

Class - None

Division - Not Applicable

Copyright © All product information within this document is subject to ABB Motors and Mechanical Inc. copyright © protection, unless otherwise noted.

4/11/2025 1:10:16 AM

## Specifications

|                                |  |
|--------------------------------|--|
| Enclosure                      | OPEN                                     |
| Frame                          | 184TC                                    |
| Frame Material                 | Steel                                    |
| Frequency                      | 60.00 Hz                                 |
| Haz Area Class and Group       | None                                     |
| Haz Area Division              | Not Applicable                           |
| Motor Letter Type              | Cap Start, Cap Run                       |
| Output @ Frequency             | 3.000 HP @ 60 HZ                         |
| Phase                          | 1  |
| Synchronous Speed @ Frequency  | 1800 RPM @ 60 HZ                         |
| Voltage @ Frequency            | 115.0 V @ 60 HZ<br>230.0 V @ 60 HZ       |
| Agency Approvals               | UR<br>CSA                                |
| Ambient Temperature            | 40 °C                                    |
| Auxillary Box                  | No Auxillary Box                         |
| Auxillary Box Lead Termination | None                                     |
| Base Indicator                 | Rigid                                    |
| Bearing Grease Type            | Polyrex EM (-20F +300F)                  |
| Blower                         | None                                     |
| Current @ Voltage              | 16.000 A @ 230.0 V<br>32.000 A @ 115.0 V |
| Design Code                    | L  |
| Drip Cover                     | No Drip Cover                            |
| Duty Rating                    | CONT                                     |
| Efficiency @ 100% Load         | 78.0 %                                   |
| Electrically Isolated Bearing  | Not Electrically Isolated                |
| Feedback Device                | NO FEEDBACK                              |
| Front Face Code                | Standard                                 |
| Front Shaft Indicator          | None                                     |
| Heater Indicator               | No Heater                                |
| High Voltage Full Load Amps    | 16.0 a                                   |

## Part detail

|              |                              |
|--------------|------------------------------|
| Revision     | AM                           |
| Type         | AC                           |
| Mech. spec.  | 36F984                       |
| Base         |                              |
| Status       | PRD/A                        |
| Elec. spec.  | 36WG2761                     |
| Layout       | 36LYF984                     |
| Eff. date    | 05-09-2024                   |
| CD Diagram   | CD0016A03                    |
| Poles        | 04                           |
| Leads        | 4#14 A&J,3#16 B PH,1#10 #4TH |
| Proprietary  | False                        |
| Created date | 01-01-0001                   |

|                                      |                         |
|--------------------------------------|-------------------------|
| <b>Insulation Class</b>              | F                       |
| <b>Inverter Code</b>                 | Not Inverter            |
| <b>KVA Code</b>                      | H                       |
| <b>Lifting Lugs</b>                  | No Lifting Lugs         |
| <b>Locked Bearing Indicator</b>      | Locked Bearing          |
| <b>Motor Lead Exit</b>               | Ko Box                  |
| <b>Motor Lead Quantity/Wire Size</b> | 4 @ 14 AWG, A&J         |
| <b>Motor Lead Termination</b>        | Flying Leads            |
| <b>Motor Standards</b>               | NEMA                    |
| <b>Motor Type</b>                    | 3634LC                  |
| <b>Mounting Arrangement</b>          | F1                      |
| <b>Number of Poles</b>               | 4                       |
| <b>Overall Length</b>                | 15.00 IN                |
| <b>Power Factor</b>                  | 78                      |
| <b>Product Family</b>                | General Purpose         |
| <b>Pulley End Bearing Type</b>       | Ball                    |
| <b>Pulley Face Code</b>              | C-Face                  |
| <b>Pulley Shaft Indicator</b>        | Standard                |
| <b>Rodent Screen</b>                 | None                    |
| <b>Service Factor</b>                | 1.15                    |
| <b>Shaft Diameter</b>                | 1.125 IN                |
| <b>Shaft Extension Location</b>      | Pulley End              |
| <b>Shaft Ground Indicator</b>        | No Shaft Grounding      |
| <b>Shaft Rotation</b>                | Reversible              |
| <b>Shaft Slinger Indicator</b>       | No Slinger              |
| <b>Speed</b>                         | 1725 rpm                |
| <b>Speed Code</b>                    | Single Speed            |
| <b>Starting Method</b>               | Direct on line          |
| <b>Thermal Device - Bearing</b>      | None                    |
| <b>Thermal Device - Winding</b>      | Do Not Use              |
| <b>Vibration Sensor Indicator</b>    | No Vibration Sensor     |
| <b>Winding Thermal 1</b>             | Manual Thermal Overload |
| <b>Winding Thermal 1 Location</b>    | SK                      |
| <b>Winding Thermal 2</b>             | None                    |

**Nameplate**

| <b>NP1257L</b>      |              |             |      |            |    |           |           |   |  |
|---------------------|--------------|-------------|------|------------|----|-----------|-----------|---|--|
| <b>CAT.NO.</b>      | CL1408TM     |             |      |            |    |           |           |   |  |
| <b>SPEC.</b>        | 36F984-2761  |             |      |            |    |           |           |   |  |
| <b>HP</b>           | 3            |             |      |            |    |           |           |   |  |
| <b>VOLTS</b>        | 115/230      |             |      |            |    |           |           |   |  |
| <b>AMP</b>          | 32/16        |             |      |            |    |           |           |   |  |
| <b>RPM</b>          | 1725         |             |      |            |    |           |           |   |  |
| <b>FRAME</b>        | 184TC        |             |      | <b>HZ</b>  | 60 |           | <b>PH</b> | 1 |  |
| <b>SER.F.</b>       | 1.15         | <b>CODE</b> | H    | <b>DES</b> | L  | <b>CL</b> | F         |   |  |
| <b>NEMA-NOM-EFF</b> | 78           | <b>PF</b>   | 78   |            |    |           |           |   |  |
| <b>RATING</b>       | 40C AMB-CONT |             |      |            |    |           |           |   |  |
| <b>CC</b>           |              |             |      |            |    |           |           |   |  |
| <b>DE</b>           | 6206         | <b>ODE</b>  | 6205 |            |    |           |           |   |  |
| <b>ENCL</b>         | OPEN         | <b>SN</b>   |      |            |    |           |           |   |  |

**AC Induction Motor Performance Data**

Record # 61459

Typical performance - not guaranteed values

| Winding: 36WG2761-R002 |              | Type: 3634LC            | Enclosure: OPEN                                  |                       |                              |
|------------------------|--------------|-------------------------|--|-----------------------|------------------------------|
| <b>Nameplate Data</b>  |              |                         | <b>230 V, 60 Hz:<br/>High Voltage Connection</b> |                       |                              |
| Rated Output (HP)      | 3            | Full Load Torque        | 9 LB-FT  |                       |                              |
| Volts                  | 115/230      | Start Configuration     | direct on line                                   |                       |                              |
| Full Load Amps         | 32/16        | Breakdown Torque        | 21 LB-FT   |                       |                              |
| R.P.M.                 | 1725         | Pull-up Torque          | 14.4 LB-FT                                       |                       |                              |
| Hz                     | 60 Phase     | 1                       | Locked-rotor Torque                              | 30.8 LB-FT            |                              |
| NEMA Design Code       | L            | KVA Code                | H  | Starting Current      | 107 A                        |
| Service Factor (S.F.)  | 1.15         | No-load Current         | 8.5 A  |                       |                              |
| NEMA Nom. Eff.         | 78           | Power Factor            | 78   | Line-line Res. @ 25°C | 4.156 Ω A Ph<br>0.586 Ω B Ph |
| Rating - Duty          | 40C AMB-CONT | Temp. Rise @ Rated Load |  |                       |                              |

**Load Characteristics 230 V, 60 Hz, 3 HP**

| % of Rated Load | 25   | 50   | 75   | 100  | 125  | 150  | S.F. |
|-----------------|------|------|------|------|------|------|------|
| Power Factor    | 45   | 64   | 73   | 79   | 85   | 83   | 83   |
| Efficiency      | 62.6 | 74.9 | 78.6 | 78   | 75   | 74.9 | 76.1 |
| Speed           | 1788 | 1780 | 1769 | 1756 | 1733 | 1721 | 1742 |
| Line amperes    | 9.1  | 10.4 | 15.8 | 16   | 19   | 23   | 17.8 |

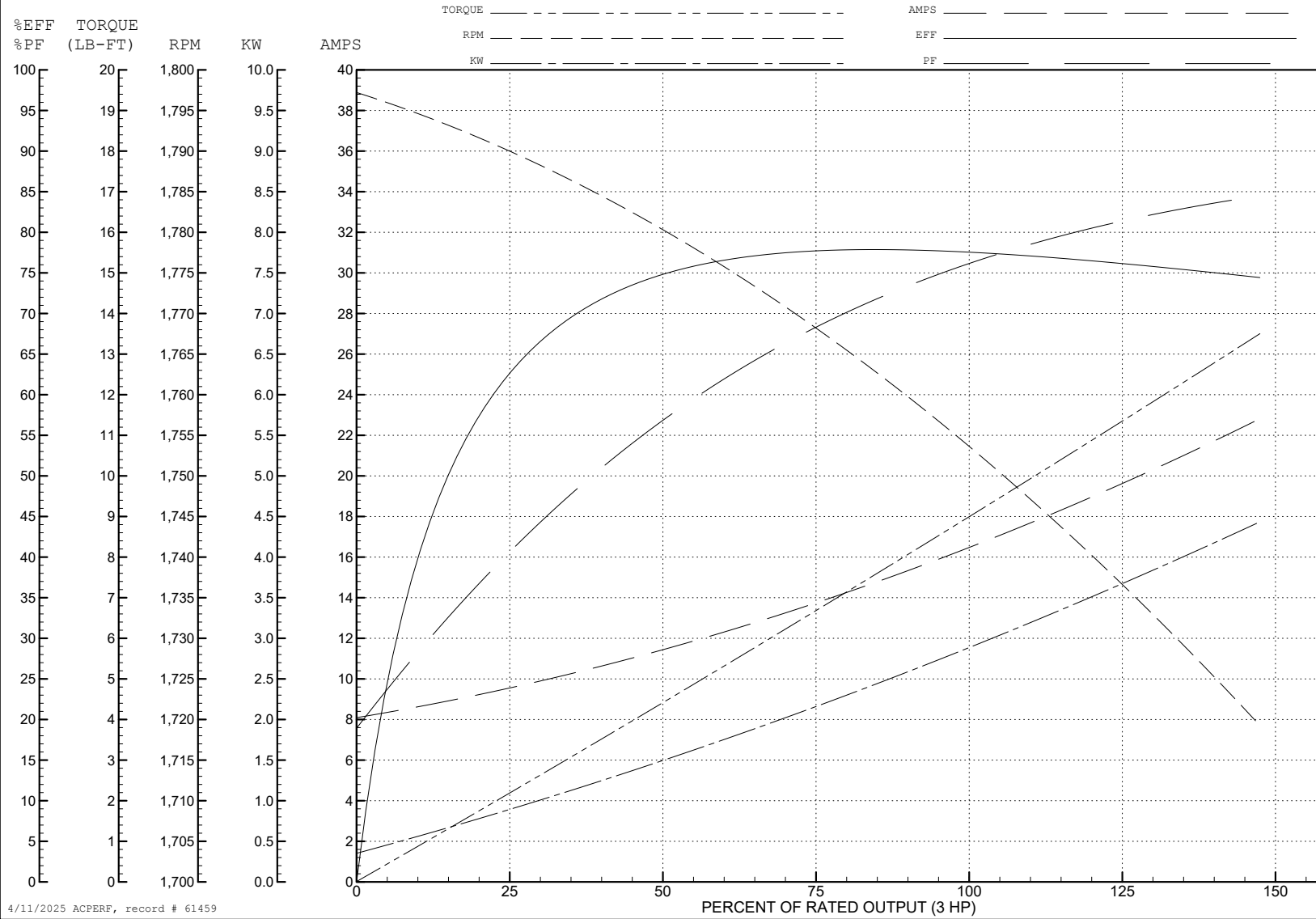
ABB Motors and Mechanical Inc.

WINDING # 36WG2761

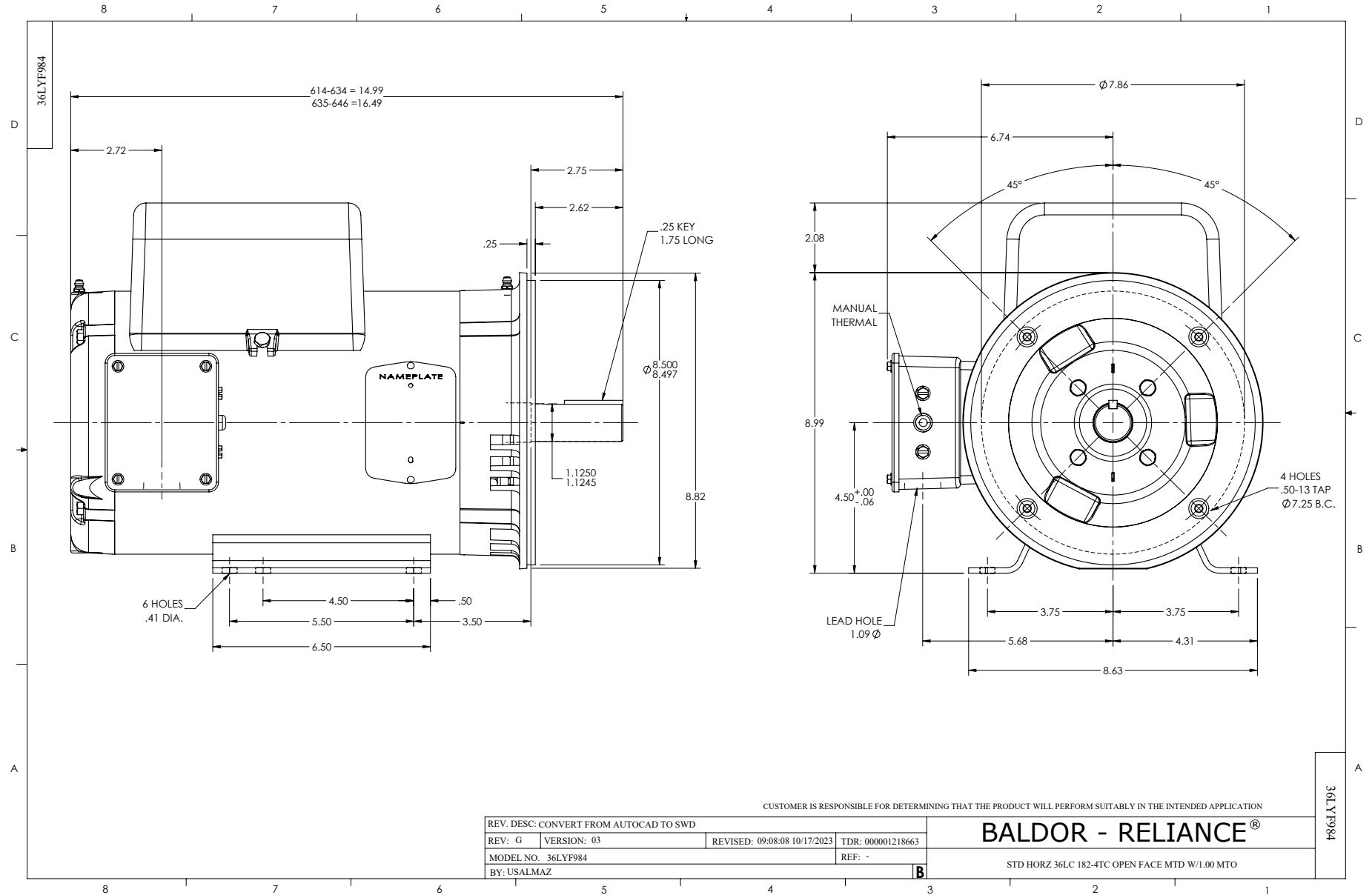
Typical performance - not guaranteed values.

3 HP 1 PH 60 HZ 1725 RPM 230 V 3634LC

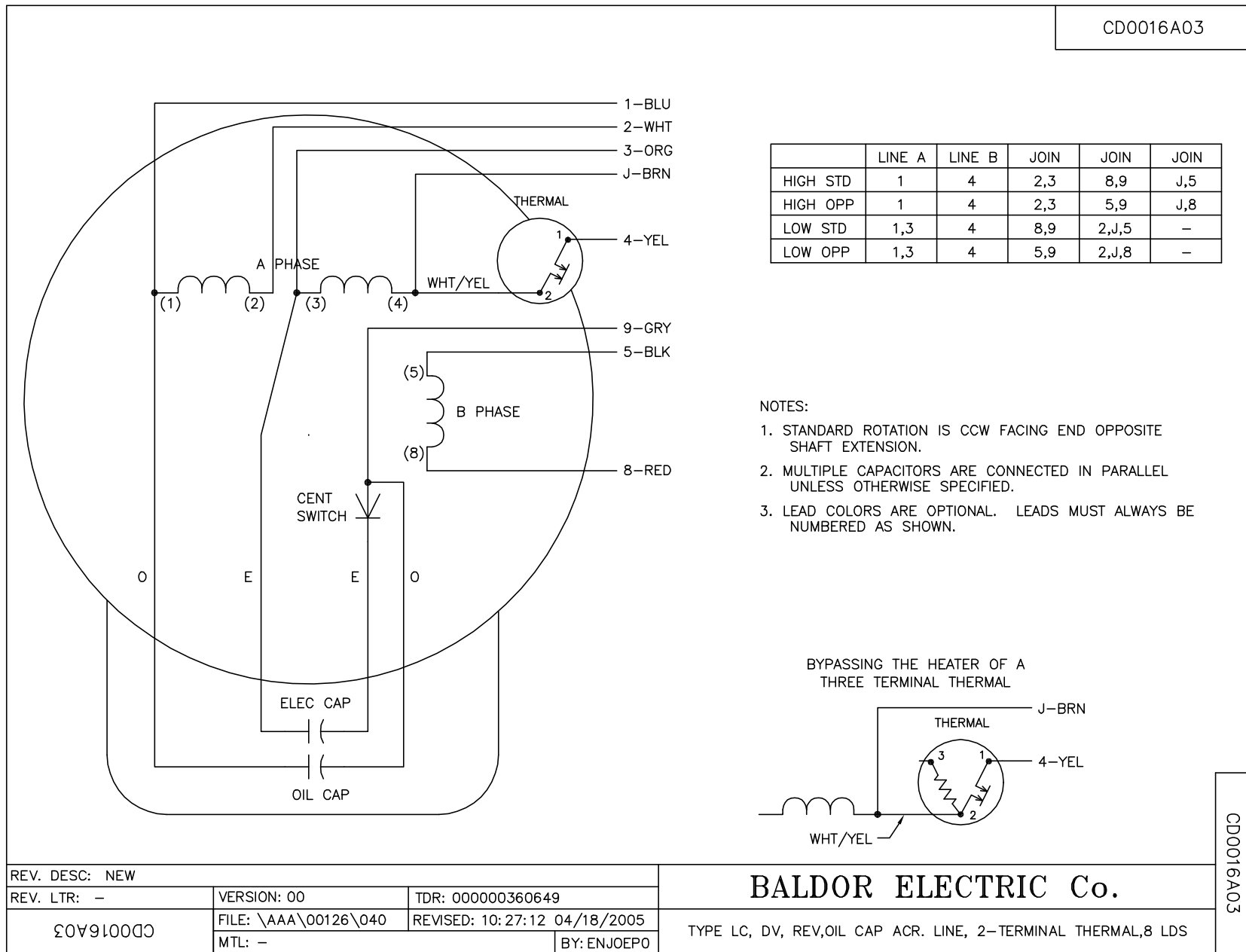
TORQUES (LB-FT): PO=21 PU=14.4 LR=30.8 LRA=107



4/11/2025 ACPERF, record # 61459



CD0016A03



|                |                      |                              |
|----------------|----------------------|------------------------------|
| REV. DESC: NEW |                      |                              |
| REV. LTR: -    | VERSION: 00          | TDR: 000000360649            |
| CD0016A03      | FILE: \AAA\00126\040 | REVISED: 10:27:12 04/18/2005 |
|                | MTL: -               | BY: ENJOEPO                  |

**BALDOR ELECTRIC Co.**

TYPE LC, DV, REV,OIL CAP ACR. LINE, 2-TERMINAL THERMAL,8 LDS

CD0016A03