

BALDOR® • RELIANCE 

Product Information Packet

CL5018

3HP,1725RPM,1PH,60HZ,215C,X3735L,XPFC,F1

Part Detail							
Revision:	AK	Status:	PRD/A	Change #:		Proprietary:	No
Type:	AC	Elec. Spec:	37WG010	CD Diagram:	CD0076	Mfg Plant:	
Mech. Spec:	37J054	Layout:	37LYJ054	Poles:	04	Created Date:	
Base:	RG	Eff. Date:	09-11-2015	Leads:	8#14		

Specs			
Catalog Number:	CL5018	Inverter Code:	Not Inverter
Enclosure:	XPFC	KVA Code:	K
Frame:	215C	Lifting Lugs:	Standard Lifting Lugs
Frame Material:	Steel	Locked Bearing Indicator:	Locked Bearing
Output @ Frequency:	3.000 HP @ 60 HZ	Motor Lead Quantity/Wire Size:	8 @ 14 AWG
Synchronous Speed @ Frequency:	1800 RPM @ 60 HZ	Motor Lead Exit:	Ko Box
Voltage @ Frequency:	115.0 V @ 60 HZ	Motor Lead Termination:	Flying Leads
	230.0 V @ 60 HZ	Motor Type:	3735L
XP Class and Group:	CLI GP D	Mounting Arrangement:	F1
XP Division:	Division I	Power Factor:	77
Agency Approvals:	UL	Product Family:	General Purpose
	CSA	Pulley End Bearing Type:	Ball
Auxillary Box:	No Auxillary Box	Pulley Face Code:	C-Face
Auxillary Box Lead Termination:	None	Pulley Shaft Indicator:	Standard
Base Indicator:	Rigid	Rodent Screen:	None
Bearing Grease Type:	Polyrex EM (-20F +300F)	Shaft Extension Location:	Pulley End
Blower:	None	Shaft Ground Indicator:	No Shaft Grounding
Current @ Voltage:	15.000 A @ 230.0 V	Shaft Rotation:	Reversible

	30.000 A @ 115.0 V	Shaft Slinger Indicator:	No Slinger
Design Code:	L	Speed Code:	Single Speed
Drip Cover:	No Drip Cover	Motor Standards:	NEMA
Duty Rating:	CONT	Starting Method:	Direct on line
Electrically Isolated Bearing:	Not Electrically Isolated	Thermal Device - Bearing:	NONE (OLD)
Feedback Device:	NO FEEDBACK	Thermal Device - Winding:	Normally Closed Thermostat
Front Face Code:	Standard	Vibration Sensor Indicator:	No Vibration Sensor
Front Shaft Indicator:	None	Winding Thermal 1:	None
Heater Indicator:	No Heater	Winding Thermal 2:	None
Insulation Class:	B	XP Temp Code:	T2C

Nameplate NP0015XPSL										
NO.		CC								
SER.										
SPEC.	37J54X10									
CAT.NO.	CL5018									
HP	3	T. CODE	T2C							
VOLTS	115/230									
AMPS	30/15									
RPM	1725									
HZ	60	PH	1	CL	B					
SER.F.	1.00	DES	L	CODE	K					
RATING	40C AMB-CONT									
FRAME	215C	NEMA-NOM-EFF	79							
USABLE AT 208V		PF	77							
BLANK										

Parts List		
Part Number	Description	Quantity
SA032948	SA 37J54X10	1.000 EA
RA028981	RA 37J54X10	1.000 EA
EC1850A06SP	ELEC CAP 115V 2.0 X 4.3 X	2.000 EA
35CB3001A02SP	EXPL PROOF CONDUIT BOX, 3/4"PIPE TAP LEA	1.000 EA
11XW1032G06	10-32 X .38, TAPTITE II, HEX WSHR SLTD U	1.000 EA
HW3001B01	BRASS CUP WASHER, FOR #10 SCREW	1.000 EA
37EP1703A01	FRONT EP, XPFC	1.000 EA
HW4500A19	1/4-28X1/4 SLOTTED PLUG F/S	2.000 EA
13XF0832A08	8-32 X.50 PAN HD,SLTD, TYPE F SCREW, ZIN	2.000 EA
HW5100A06	W2420-025 WVY WSHR (WB)	1.000 EA
60XN1032A07	10-32 X .4375 TRUSS HEAD, TORX SERRATED	2.000 EA
37EP1700A01	PU EP, XPFC, 213-5TC	1.000 EA
HW4001A02	3/8 HX SOC PIPE PLUG W/.75" TAPER (F/S)	2.000 EA
12XN2520A26	HX HD .25-20X1.625 ZN PLT	2.000 EA
HW1001A25	LOCKWASHER 1/4, ZINC PLT .493 OD, .255 I	2.000 EA
XY5013A12	NUT,1/2-13,HEX,STEEL,ZINCPLATED	4.000 EA
37FN3002A01SP	EXFN, PLASTIC, 9.00 OD, 1.155 ID	1.000 EA
51XB1214A20	12-14X1.25 HXWSSLD SERTYB	1.000 EA
37FH4000A02SP	FAN COVER, W/ PRIMER	1.000 EA
51XW1032A06	10-32 X .38, TAPTITE II, HEX WSHR SLTD S	3.000 EA
35CB3500A01SP	CONDUIT BOX LID, MACH	1.000 EA
51XN2520A16	SCREW, HEX WS SLT, ZN, 1/4-20 X 1.00	4.000 EA
HW2501E18	KEY, 1/4 SQ X 2.000	1.000 EA
HA7000A02	KEY RETAINER RING, 1 1/8 DIA, 1 3/8 DIA	1.000 EA

Parts List (continued)		
Part Number	Description	Quantity
85XU0407S04	4X1/4 U DRIVE PIN STAINLESS	6.000 EA
LB1115N	LABEL,LIFTING DEVICE (ON ROLLS)	1.000 EA
MJ1000A02	GREASE, POLYREX EM EXXON (USe 4824-15A)	0.050 LB
HA6003A07	CAPACITOR CLAMP 37 XPROOF PLATED	2.000 EA
51XW1032A08	10/32X1/2 HXWSHR HD, SL, SERATED	2.000 EA
MG1025G29	WILKOFAS, 789.229, DARK CHARCOAL GRAY	0.028 GA
NP0018F	ALUM UL XP CONDUIT BOX NAMEPLATE	1.000 EA
SP5127A11	MODEL 37 XP TYPE L	1.000 EA
HA3106A02	THRUBOLT- 1/2-13 X 10.750	4.000 EA
LB1119N	WARNING LABEL	1.000 EA
LC0199	CONNECTION LABEL X	1.000 EA
NP0015XPSL	SS XP UL CSA CC CL-I GP-D	1.000 EA
37PA1039	PALLET PACK GRP, PRINT PK1026A06	1.000 EA
MN416A01	TAG-INSTAL-MAINT no wire (1200/bx) 5/18	1.000 EA

AC Induction Motor Performance Data

Record # 11964 - Typical performance - not guaranteed values

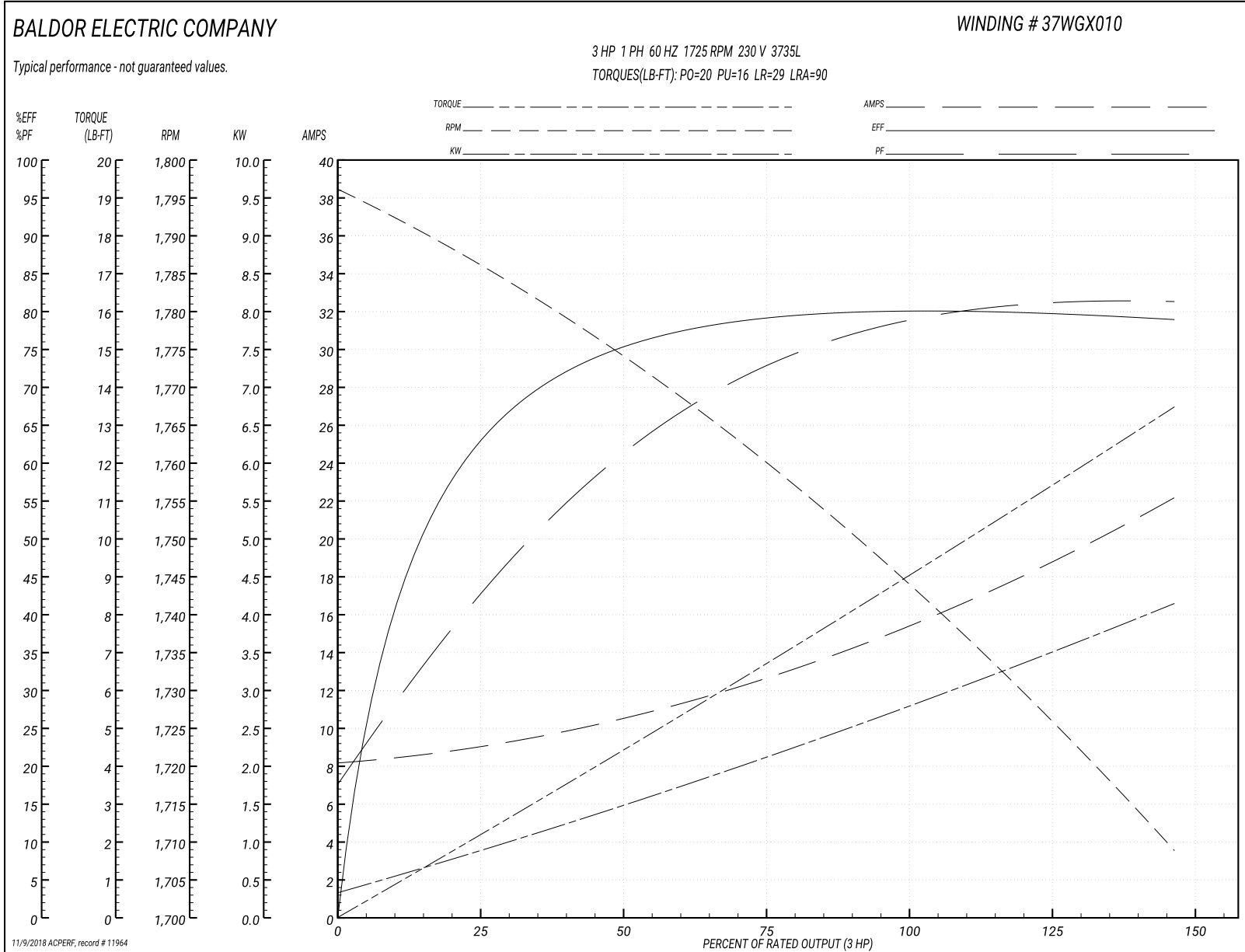
Winding: 37WGX010-R001	Type: 3735L	Enclosure: XPFC
-------------------------------	--------------------	------------------------

Nameplate Data				230 V, 60 Hz: High Voltage Connection	
Rated Output (HP)	3			Full Load Torque	9 LB-FT
Volts	115/230			Start Configuration	direct on line
Full Load Amps	30/15			Breakdown Torque	20 LB-FT
R.P.M.	1725			Pull-up Torque	16 LB-FT
Hz	60	Phase	1	Locked-rotor Torque	29 LB-FT
NEMA Design Code	L	KVA Code	K	Starting Current	90 A
Service Factor (S.F.)	1			No-load Current	8.2 A
NEMA Nom. Eff.	79	Power Factor	77	Line-line Res. @ 25°C	0.432 Ω A Ph 0.516 Ω B Ph
Rating - Duty	40C AMB-CONT			Temp. Rise @ Rated Load	74°C

Load Characteristics 230 V, 60 Hz, 3 HP

% of Rated Load	25	50	75	100	125	150
Power Factor	43	61	72	79	82	84
Efficiency	62.7	75	79.1	80.4	80.1	78.7
Speed	1785	1773	1760	1745	1728	1708
Line amperes	9	10.6	12.7	15.4	18.5	22.2

Performance Graph at 230V, 60Hz, 3.0HP Typical performance - Not guaranteed values



AC Induction Motor Performance Data

Record # 67895 - Typical performance - not guaranteed values

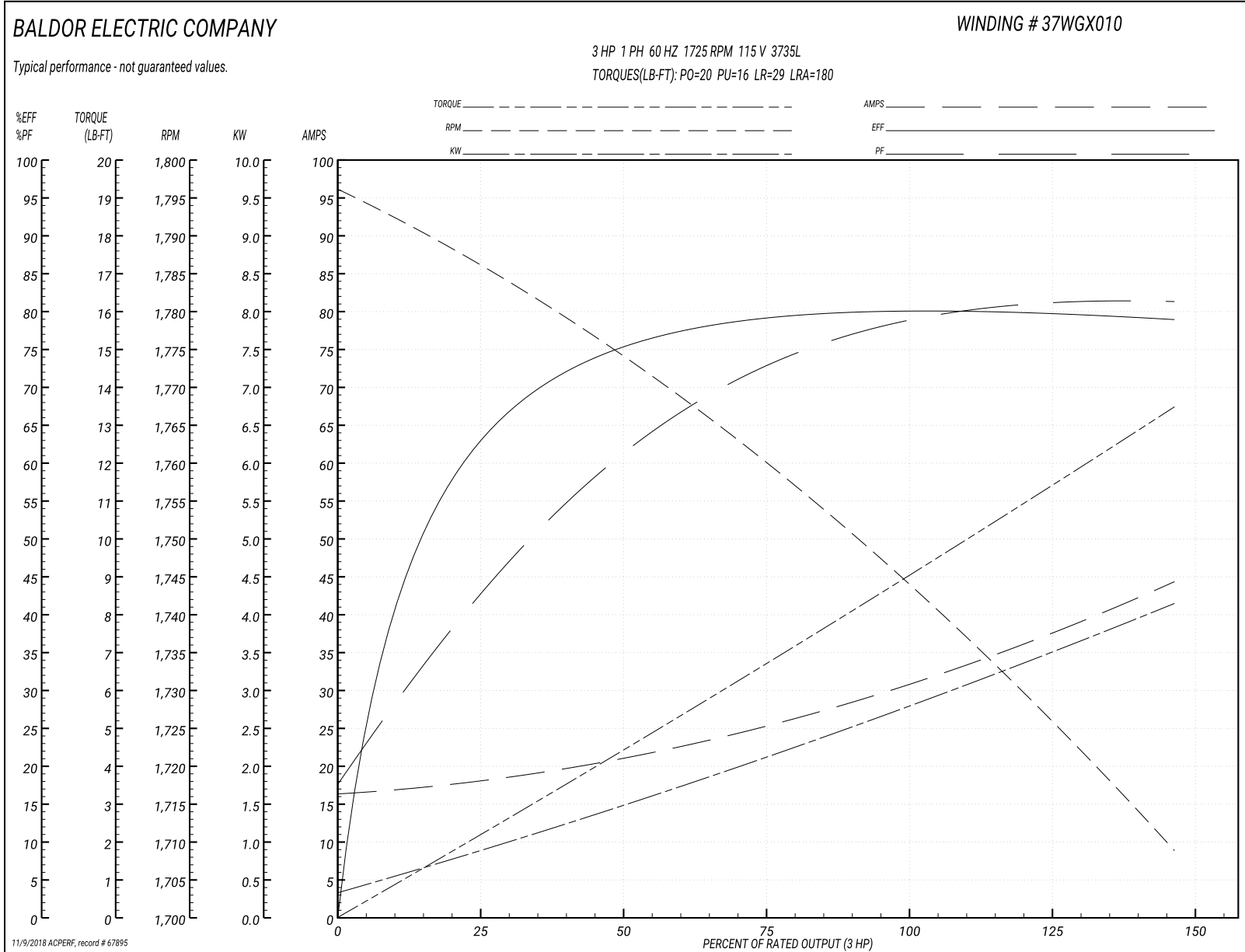
Winding: 37WGX010-R001	Type: 3735L	Enclosure: XPFC
-------------------------------	--------------------	------------------------

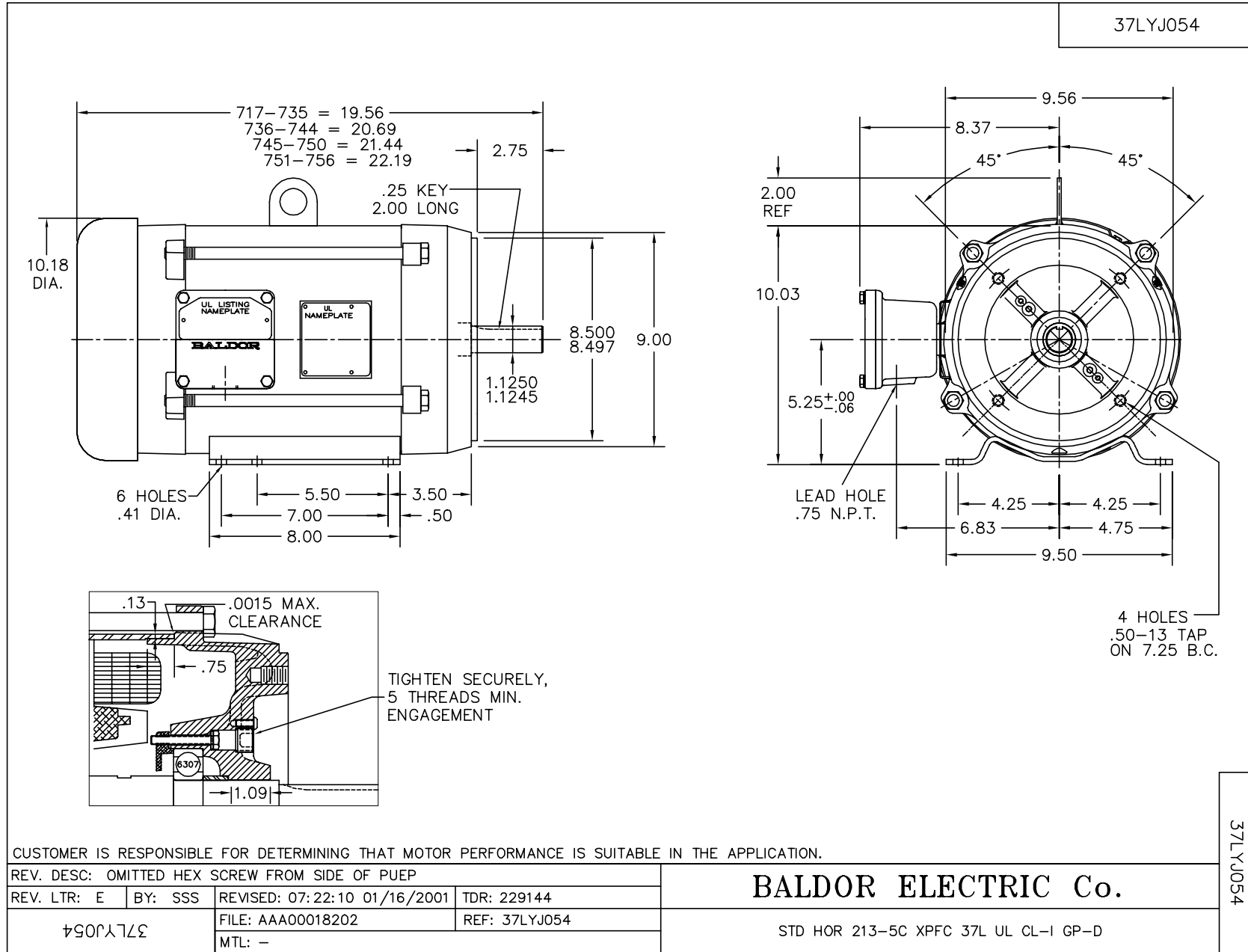
Nameplate Data				115 V, 60 Hz: Low Voltage Connection	
Rated Output (HP)	3			Full Load Torque	9 LB-FT
Volts	115/230			Start Configuration	direct on line
Full Load Amps	30/15			Breakdown Torque	20 LB-FT
R.P.M.	1725			Pull-up Torque	16 LB-FT
Hz	60	Phase	1	Locked-rotor Torque	29 LB-FT
NEMA Design Code	L	KVA Code	K	Starting Current	180 A
Service Factor (S.F.)	1			No-load Current	16.4 A
NEMA Nom. Eff.	79	Power Factor	77	Line-line Res. @ 25°C	0.108 Ω A Ph 0.515 Ω B Ph
Rating - Duty	40C AMB-CONT			Temp. Rise @ Rated Load	74°C
				Locked-rotor Power Factor	91.2
				Rotor inertia	0.74 LB-FT ²

Load Characteristics 115 V, 60 Hz, 3 HP

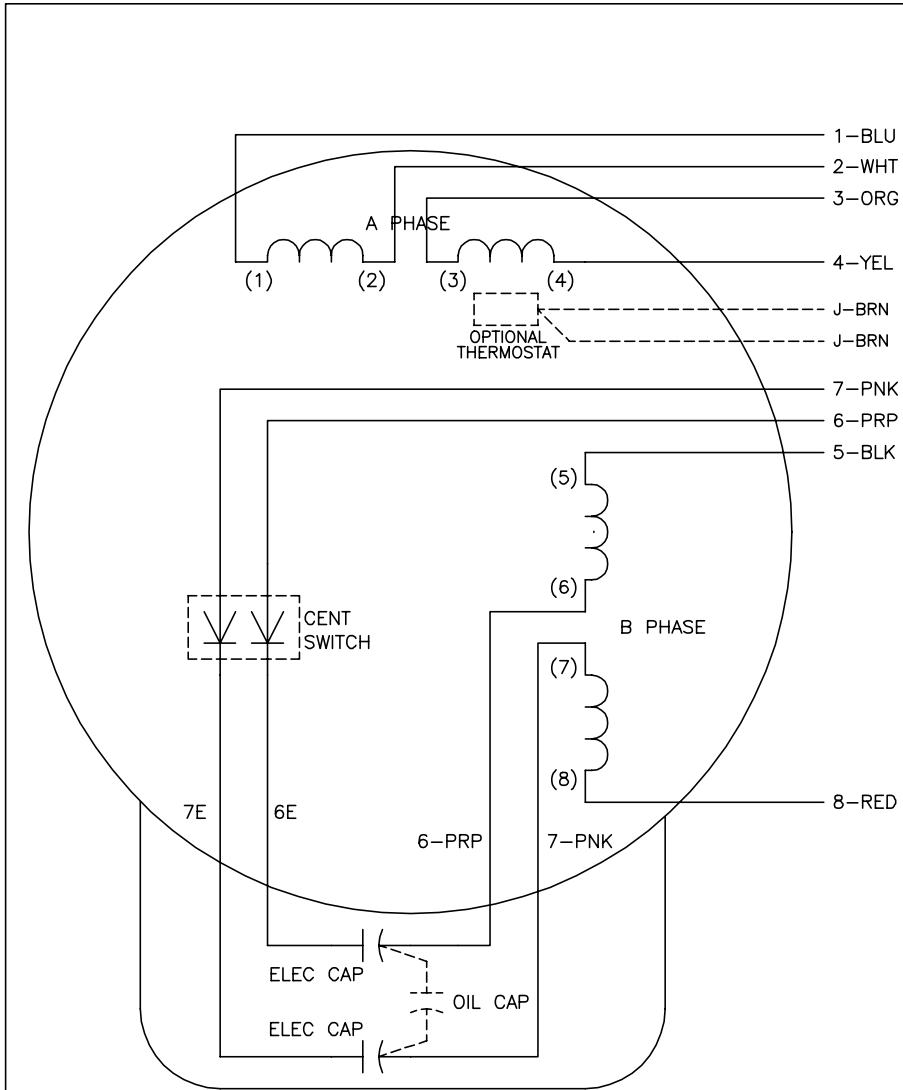
% of Rated Load	25	50	75	100	125	150
Power Factor	44	62	73	78	81	82
Efficiency	62.7	75	79.1	80.4	80.1	78.7
Speed	1785	1773	1760	1745	1728	1708
Line amperes	18	21.2	25.4	30.8	37	44.4

Performance Graph at 115V, 60Hz, 3.0HP Typical performance - Not guaranteed values





CD0076



	LINE A	LINE B	JOIN	JOIN
HIGH STD	1,8	4,5	2,3	6,7
HIGH OPP	1,5	4,8	2,3	6,7
LOW STD	1,3,6,8	2,4,5,7	-	-
LOW OPP	1,3,5,7	2,4,6,8	-	-

- NOTES:
1. STANDARD ROTATION IS CCW FACING END OPPOSITE SHAFT EXTENSION.
 2. OPTIONAL THERMOSTAT IS PROVIDED WHEN SPECIFIED.
 3. OPTIONAL OIL CAP(S) ARE PROVIDED WHEN SPECIFIED. MULTIPLE OIL CAPS ARE CONNECTED IN PARALLEL.
 4. LEAD COLORS ARE OPTIONAL. LEADS MUST ALWAYS BE NUMBERED AS SHOWN.

REV. DESC: ADD OPTIONAL COLORS			
REV. LTR: E	VERSION: 01	TDR: 000000372126	
9Z00D0	FILE: \AAA\00007\419	REVISED: 15:44:39 09/28/2005	
	MTL: -	BY: ENJOEPO	

BALDOR ELECTRIC Co.

TYPE L OR LC, DV, REV, SERIES/PAR B PH, 8 LEAD

CD0076