

BALDOR® • RELIANCE 

Product Information Packet

CUHL3518

.5HP, 1725RPM, 1PH, 60HZ, 56C, 3520L, TEFC, F3

| Part Detail | | | | | | | |
|-------------|--------|-------------|------------|-------------|--------|---------------|------------|
| Revision: | H | Status: | PRD/A | Change #: | | Proprietary: | No |
| Type: | AC | Elec. Spec: | 35WGN406 | CD Diagram: | CD0001 | Mfg Plant: | |
| Mech. Spec: | 35X061 | Layout: | 35LYX061 | Poles: | 04 | Created Date: | 09-17-2012 |
| Base: | RG | Eff. Date: | 03-02-2018 | Leads: | 6#18 | | |

| Specs | | | |
|---------------------------------|------------------|--------------------------------|-----------------|
| Catalog Number: | CUHL3518 | Heater Indicator: | No Heater |
| Enclosure: | TEFC | Insulation Class: | F |
| Frame: | 56C | Inverter Code: | Not Inverter |
| Frame Material: | Steel | KVA Code: | M |
| Output @ Frequency: | .500 HP @ 60 HZ | Lifting Lugs: | No Lifting Lugs |
| Synchronous Speed @ Frequency: | 1800 RPM @ 60 HZ | Locked Bearing Indicator: | Locked Bearing |
| Voltage @ Frequency: | 208.0 V @ 60 HZ | Motor Lead Quantity/Wire Size: | 6 @ 18 AWG |
| | 115.0 V @ 60 HZ | Motor Lead Exit: | Ko Box |
| | 230.0 V @ 60 HZ | Motor Lead Termination: | Flying Leads |
| XP Class and Group: | None | Motor Type: | 3520L |
| XP Division: | Not Applicable | Mounting Arrangement: | F3 |
| Agency Approvals: | UR | Power Factor: | 65 |
| | WEEE | Product Family: | General Purpose |
| | CSA | Pulley End Bearing Type: | Ball |
| | CE | Pulley Face Code: | C-Face |
| Auxillary Box: | No Auxillary Box | Pulley Shaft Indicator: | Standard |
| Auxillary Box Lead Termination: | None | Rodent Screen: | None |
| Base Indicator: | Rigid | RoHS Status: | ROHS COMPLIANT |

| | | | |
|---------------------------------------|---------------------------|------------------------------------|---------------------|
| Bearing Grease Type: | Polyrex EM (-20F +300F) | Shaft Extension Location: | Pulley End |
| Blower: | None | Shaft Ground Indicator: | No Shaft Grounding |
| Current @ Voltage: | 3.700 A @ 230.0 V | Shaft Rotation: | Reversible |
| | 7.400 A @ 115.0 V | Shaft Slinger Indicator: | No Slinger |
| | 3.500 A @ 208.0 V | Speed Code: | Single Speed |
| Design Code: | N | Motor Standards: | NEMA |
| Drip Cover: | No Drip Cover | Starting Method: | Direct on line |
| Duty Rating: | CONT | Thermal Device - Bearing: | NONE (OLD) |
| Electrically Isolated Bearing: | Not Electrically Isolated | Thermal Device - Winding: | None |
| Feedback Device: | NO FEEDBACK | Vibration Sensor Indicator: | No Vibration Sensor |
| Front Face Code: | Standard | Winding Thermal 1: | None |
| Front Shaft Indicator: | None | Winding Thermal 2: | None |

| Nameplate NP1372L | | | | | | | | | | |
|-------------------|--------------|--|------|----|-----|------|--|----|----------------|---|
| CAT.NO. | CUHL3518 | | | | | | | | | |
| SPEC. | 35X061N406G1 | | | | | | | | | |
| HP | .5 | | | | | | | | | |
| VOLTS | 115/208-230 | | | | | | | | | |
| AMP | 7.4/3.5-3.7 | | | | | | | | | |
| RPM | 1725 | | | | | | | | | |
| FRAME | 56C | | | | HZ | 60 | | | PH | 1 |
| SER.F. | 1.15 | | CODE | M | DES | N | | CL | F | |
| NEMA-NOM-EFF | 68 | | PF | 65 | | | | | | |
| RATING | 40C AMB-CONT | | | | | | | | | |
| CC | | | | | | | | | USABLE AT 208V | |
| DE | 6205 | | | | ODE | 6203 | | | | |
| ENCL | TEFC | | SN | | | | | | | |
| | IP44 | | | | | | | | | |

| Parts List | | |
|---------------|--|----------|
| Part Number | Description | Quantity |
| SA251233 | SA 35X061N406G1 | 1.000 EA |
| RA238075 | RA 35X061N406G1 | 1.000 EA |
| EC1400A03SP | ELEC CAP, 400-480 MFD, 125V, 1.81D X 3. | 1.000 EA |
| NS2512A01 | INSULATOR, CONDUIT BOX X | 1.000 EA |
| 35CB4007 | KOBX,W/PRIMER (REL# 79097-49-C) | 1.000 EA |
| 35GS3009 | GASKET, KOBX 35CB4006 (411881-15A) | 1.000 EA |
| WD4101A13 | STEEL CAPLUG,BP-1 1/8, PLUG D3561S | 1.000 EA |
| 51XB1016A05 | 10-16X5/16HX WA SL SR TYB (F/S) | 2.000 EA |
| 11XW1032G06 | 10-32 X .38, TAPTITE II, HEX WSHR SLTD U | 1.000 EA |
| HW3001B02 | BRASS CUP WASHER W/GROUND SYMBOL TAB, | 1.000 EA |
| 35EP3122K00 | MASTER ODE,203 BRG,.683SH,#26 DRN,FH MTG | 1.000 EA |
| 51XW0832A07 | 8-32 X .44, TAPTITE II, HEX WSHR SLTD SE | 2.000 EA |
| 51XB1016A05 | 10-16X5/16HX WA SL SR TYB (F/S) | 2.000 EA |
| 35CB4802A02SP | CAPACITOR COVER, STAMPED X | 1.000 EA |
| 35GS3001A02 | GASKET, CA.COVER, 5.38 LONG .06 CS301 | 1.000 EA |
| HW5100A03 | WAVY WASHER (W1543-017) | 1.000 EA |
| 35EP3307F00 | MASTER DE,205 BRG,.998SH,#26 DRN | 1.000 EA |
| 51XN1032A20 | 10-32 X 1 1/4 HX WS SL SR | 2.000 EA |
| 51XB1214A16 | 12-14X1.00 HXWSSLD SERTYB | 1.000 EA |
| 35FH4005A32SP | IEC FH NO GRSR W/3 HOLES - PRIMED | 1.000 EA |
| 51XW1032A06 | 10-32 X .38, TAPTITE II, HEX WSHR SLTD S | 3.000 EA |
| 35CB4519 | CB LID W/BLACK PRIMER | 1.000 EA |
| 35GS3019A01 | LEXIDE GASKET, FOR KOBX LID 35CB4519 | 1.000 EA |
| 51XW0832A07 | 8-32 X .44, TAPTITE II, HEX WSHR SLTD SE | 4.000 EA |

| Parts List (continued) | | |
|-------------------------------|--|-----------------|
| Part Number | Description | Quantity |
| HW2501D13 | KEY, 3/16 SQ X 1.375 | 1.000 EA |
| HA7000A04 | KEY RETAINER 0.625 DIA SHAFTS | 1.000 EA |
| 85XU0407S04 | 4X1/4 U DRIVE PIN STAINLESS | 2.000 EA |
| WD1000A15 | 3-520132-2 AMP FLAG (4M/RL NON-CANC/NON- | 2.000 EA |
| MJ1000A02 | GREASE, POLYREX EM EXXON (USe 4824-15A) | 0.050 LB |
| 35FN3002A05SP | EXFN, PLASTIC, 6.376 OD, .638 ID | 1.000 EA |
| MG1025N19 | MUNSELL 8.5BG 3.57/2.0, GLOSS 30, B/G, | 0.017 GA |
| SP5051A97 | MODEL 35 TORQ STATIONARY SWITCH FOR "L" | 1.000 EA |
| HA3100A12 | THRUBOLT 10-32 X 7.375 | 4.000 EA |
| LB1119N | WARNING LABEL | 1.000 EA |
| LC0001 | CONN LABEL TYPE L, 6 LEAD, DUAL VOLTS, R | 1.000 EA |
| MN416A01 | TAG-INSTAL-MAINT no wire (1200/bx) 5/18 | 1.000 EA |
| NP1372L | ALUM UL CSA CE CC | 1.000 EA |
| 35PA1066 | PKG GRP, PRINT PK1008A06 | 1.000 EA |
| PK3082 | STYROFOAM CRADLE | 1.000 EA |
| FE-0000001 | ZRTG FE ASSEMBLY | 1.000 EA |
| PE-0000001 | ZRTG PE ASSEMBLY | 1.000 EA |

AC Induction Motor Performance Data

Record # 39785 - Typical performance - not guaranteed values

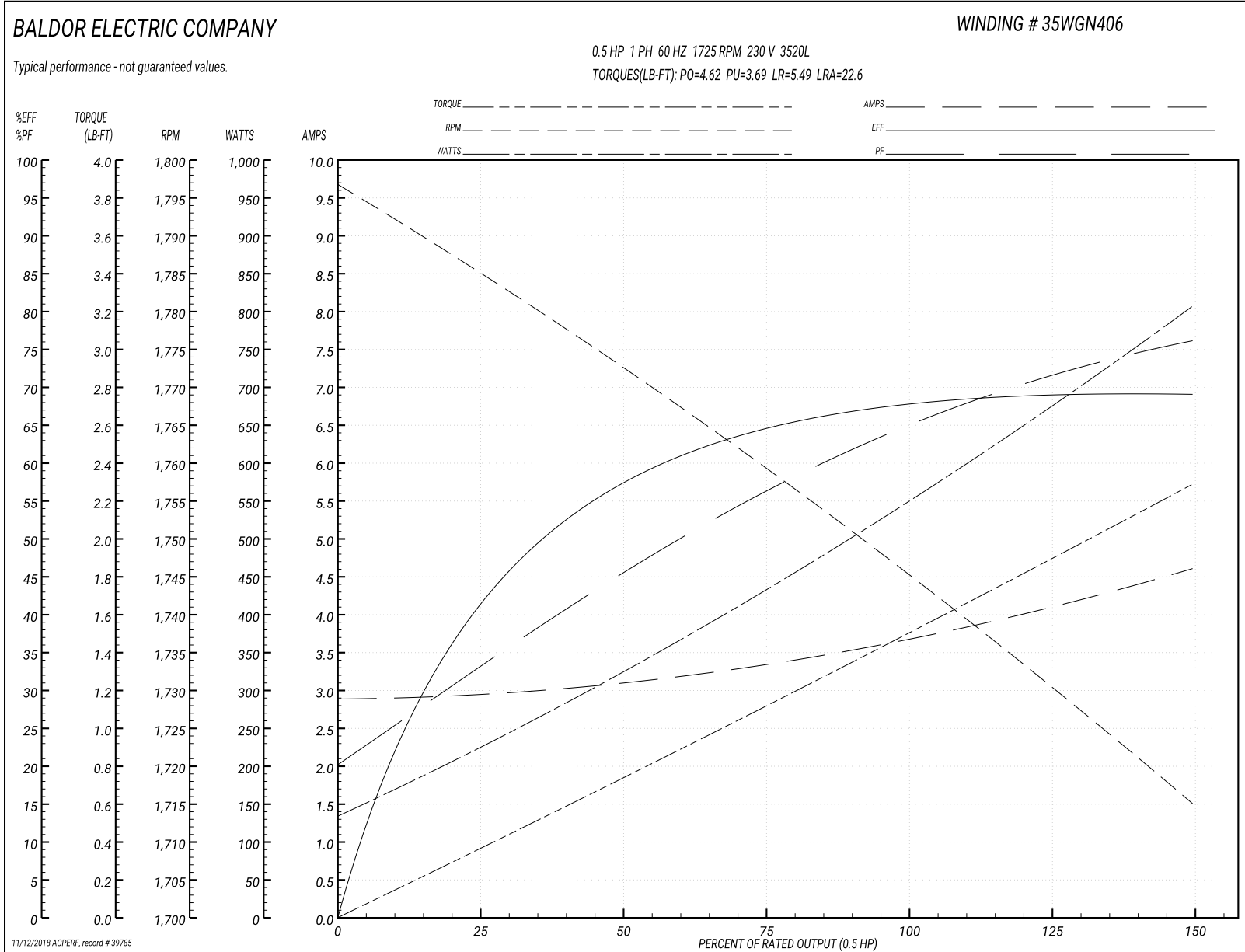
| | | |
|-------------------------------|--------------------|------------------------|
| Winding: 35WGN406-R003 | Type: 3520L | Enclosure: TEFC |
|-------------------------------|--------------------|------------------------|

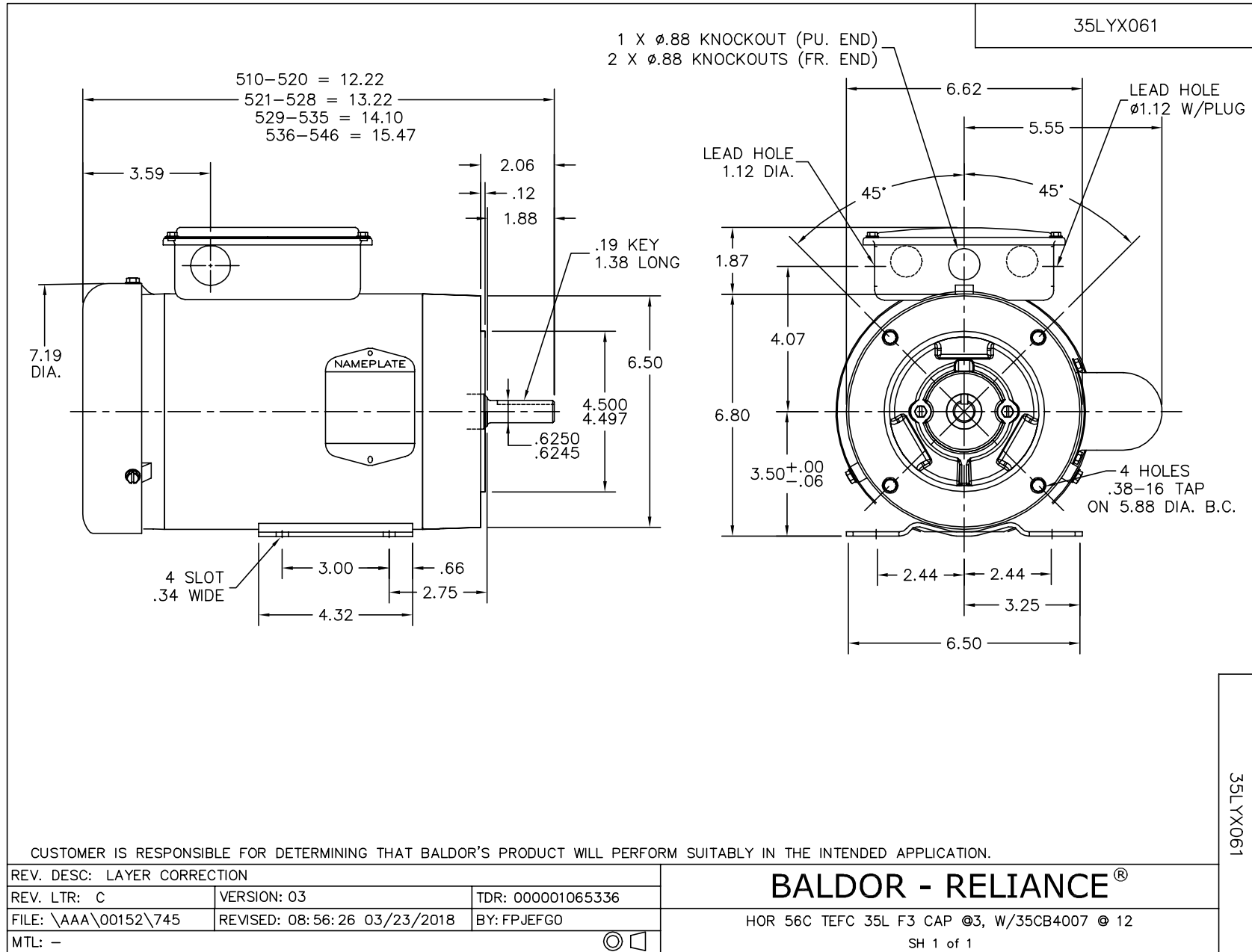
| Nameplate Data | | | | 230 V, 60 Hz: High Voltage Connection | |
|-----------------------|--------------|--------------|----|--|--------------------------------|
| Rated Output (HP) | .5 | | | Full Load Torque | 1.51 LB-FT |
| Volts | 115/208-230 | | | Start Configuration | direct on line |
| Full Load Amps | 7.4/3.5-3.7 | | | Breakdown Torque | 4.62 LB-FT |
| R.P.M. | 1725 | | | Pull-up Torque | 3.69 LB-FT |
| Hz | 60 | Phase | 1 | Locked-rotor Torque | 5.49 LB-FT |
| NEMA Design Code | N | KVA Code | M | Starting Current | 22.6 A |
| Service Factor (S.F.) | 1.15 | | | No-load Current | 2.89 A |
| NEMA Nom. Eff. | 68 | Power Factor | 65 | Line-line Res. @ 25°C | 4.0781 Ω A Ph 2.4038 Ω B Ph |
| Rating - Duty | 40C AMB-CONT | | | Temp. Rise @ Rated Load | 67°C |
| S.F. Amps | | | | Temp. Rise @ S.F. Load | 75°C |

Load Characteristics 230 V, 60 Hz, 0.5 HP

| % of Rated Load | 25 | 50 | 75 | 100 | 125 | 150 | S.F. |
|-----------------|--------|------|--------|--------|--------|--------|------|
| Power Factor | 34 | 46 | 56 | 65 | 71 | 76 | 69 |
| Efficiency | 41.6 | 57.1 | 64.6 | 68 | 69 | 69 | 68.6 |
| Speed | 1783.2 | 1772 | 1759.8 | 1745.9 | 1730.5 | 1714.5 | 1737 |
| Line amperes | 2.95 | 3.09 | 3.35 | 3.69 | 4.1 | 4.61 | 3.94 |

Performance Graph at 230V, 60Hz, 0.5HP Typical performance - Not guaranteed values





CD0001



| | | | |
|---|---------|------------------------|--------------|
| REV. DESC: REVISE TO SHOW OPTIONAL COLORS | | | |
| REV. LTR: D | BY: JLP | REVISED: 04/08/99 1:16 | TDR: 0178636 |
| 100000 | | FILE: AAA00007405 | MDL: - |
| | | MTL: - | |

BALDOR ELECTRIC Co.

TYPE L, DV, REV, 6 LEADS

CD0001