

# PRODUCT INFORMATION PACKET



Model No: CZ4T17VZ6B

Catalog No: 103404.00

..1/2HP-.37KW..1800RPM.IEC 71.TENV.230/460V.3PH.60HZ.CONT.40C.1.15SF.B5.....Washdown  
Stainless.NOT.....37KW...

Washguard



Regal and Leeson are trademarks of Regal Beloit Corporation or one of its affiliated companies.

©2018 Regal Beloit Corporation, All Rights Reserved. MC017097E



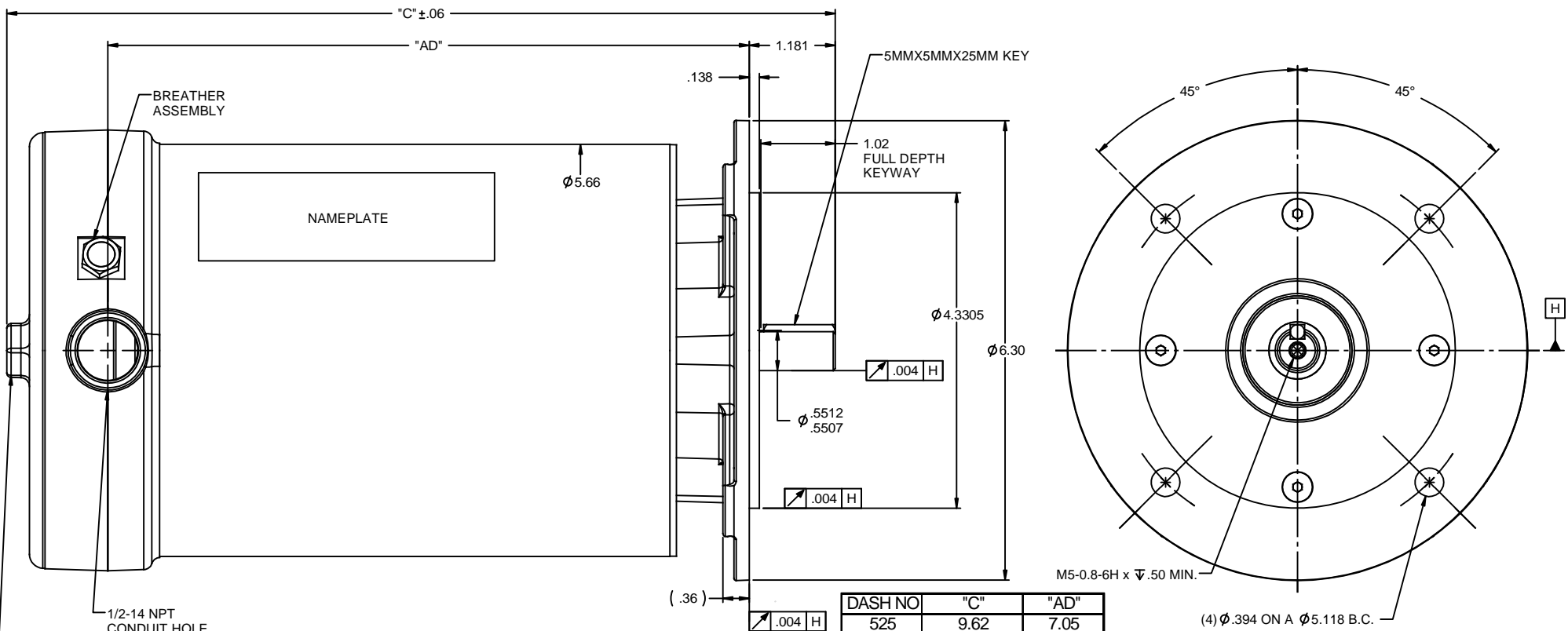


### Nameplate Specifications

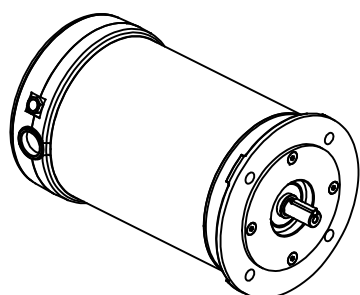
Output HP	<b>0.50 Hp</b>	Output KW	<b>0.37 kW</b>
Frequency	<b>60 Hz</b>	Voltage	<b>208-230/460 V</b>
Current	<b>1.9-1.8/0.90 A</b>	Speed	<b>1725 rpm</b>
Service Factor	<b>1.15</b>	Phase	<b>3</b>
Efficiency	<b>76 %</b>	Duty	<b>Continuous</b>
Insulation Class	<b>F</b>	Design Code	<b>B</b>
KVA Code	<b>K</b>	Frame	<b>71</b>
Enclosure	<b>Totally Enclosed Non Ventilated</b>	Overload Protector	<b>No</b>
Ambient Temperature	<b>40 °C</b>	Drive End Bearing Size	<b>6204</b>
Opp Drive End Bearing Size	<b>6204</b>	UL	<b>Recognized</b>
CSA	<b>Y</b>	CE	<b>Y</b>
IP Code	<b>56</b>		

### Technical Specifications

Electrical Type	<b>Squirrel Cage Induction Run</b>	Starting Method	<b>Across The Line</b>
Poles	<b>4</b>	Rotation	<b>Reversible</b>
Mounting	<b>Round</b>	Motor Orientation	<b>HORIZONTAL</b>
Drive End Bearing	<b>BALL</b>	Opp Drive End Bearing	<b>BALL</b>
Frame Material	<b>Stainless Steel</b>	Shaft Type	<b>IEC</b>
Overall Length	<b>11.62 in</b>	Frame Length	<b>7.25 in</b>
Shaft Diameter	<b>0.562 in</b>	Shaft Extension	<b>1.18 in</b>
Assembly/Box Mounting	<b>F1 ONLY</b>		
Outline Drawing	<b>031989-725</b>	Connection Diagram	<b>005010.01</b>



3/4" HEX DRIVER FOR COVER REMOVAL



DASH NO	"C"	"AD"
525	9.62	7.05
550	9.87	7.30
575	10.12	7.55
600	10.37	7.80
625	10.62	8.05
650	10.87	8.30
675	11.12	8.55
700	11.37	8.80
725	11.62	9.05
750	11.87	9.30
775	12.12	9.55
800	12.37	9.80

		TOLERANCES UNLESS SPECIFIED:		<b>LEESON</b> ELECTRIC MOTORS GEARMOTORS AND DRIVES	DRAWN VV 02/25/10	
		DEC	INCHES		CHK JJK 02/25/10	
		x	±.1	APPR		
		.xx	±.03	TITLE OUTLINE - S.S.	SCALE 3:4	
		.xxx	±.005	IEC-71 B5 FLANGE	REF 042541&027543	
01	ADDED THE BREATHER ASSEMBLY AND MODIFIED TABLE	VV 3/13/2010	.xxxix	±.0005	MATL	FMF 103404
NO	REVISION	BY & DATE	CHK ANG	±1/2°	FINISH	PAGE 1 OF 1
			RFP	PREV	SIZE	DRAWING NO
			THIRD ANGLE PROJECTION		<b>B</b>	<b>031989</b>
			NETWORK FILE NAME 031989-layout			REV
						01

005010-01

VIEW FROM OUTSIDE OF MOTOR AT SWITCH END.



VOLTAGE	L1	L2	L3	JOIN & INSULATE
HIGH	T1	T2	T3	(T4,T7) (T5,T8) (T6,T9)
LOW	T1,T7	T2,T8	T3,T9	T4,T5,T6

				TOLERANCES UNLESS SPECIFIED		<b>Regal Beloit America, Inc.</b>		DRAWN RDW 04/12/02		
				DEC.	INCHES			CHK		
				.X	±.1			APPD		
				.XX	±.01			SCALE 1=1		
				.XXX	±.005	TITLE		REF FIG.2-51		
A	UPDATED TO REGAL LOGO	SAJ 06/26/15	AJY	.XXXX	±.0005	MAT'L.		FMF		
NO.	REVISION	BY & DATE	CHK	ANG	±1/2"	FINISH		PREV		
THIS DRAWING IN DESIGN AND DETAIL IS OUR PROPERTY AND MUST NOT BE USED EXCEPT IN CONNECTION WITH OUR WORK ALL RIGHTS OF DESIGN AND INVENTION ARE RESERVED THIS IS AN ELECTRONICALLY GENERATED DOCUMENT - DO NOT SCALE THIS PRINT				RFP	04/12/02	CAD FILE		SIZE	DRAWING NO.	REV.
				DIST	BRF-NLV	00501001		A	005010-01	A

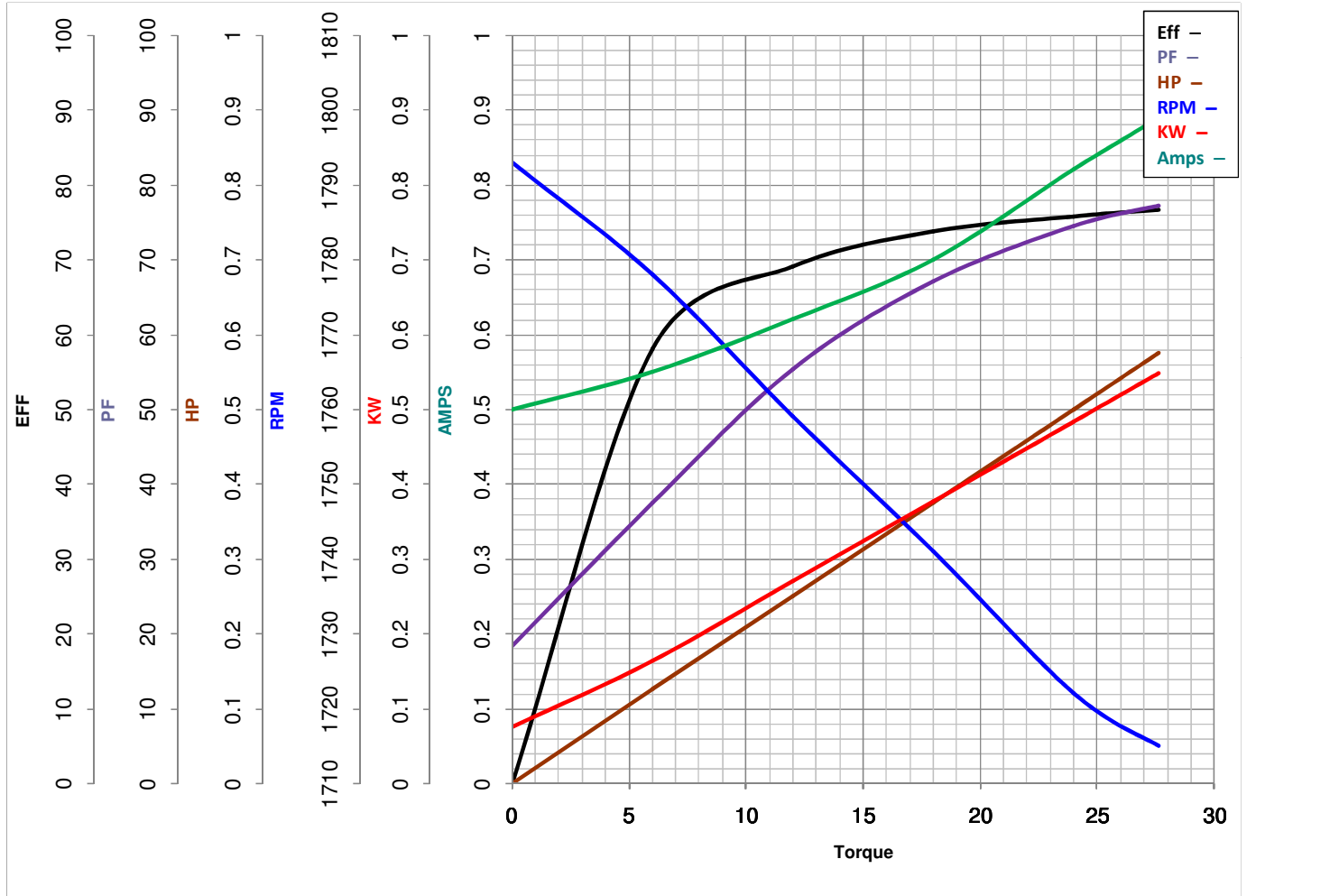


**LEESON ELECTRIC CORPORATION**  
 TYPICAL PERFORMANCE CURVE for AC MOTOR

Model No 103404.00

Catalog No 103404.00

Curve at 460 Volts      HP 0.5&0.5      PHASE 3  
60 HZ  
0.5 HP      VOLTS 208-230/460&190/380  
 HZ 60&50      RPM 1725&1425



FL TORQUE	<u>24</u> Oz.Ft	FL AMPS	<u>1.9-1.8/0.9</u>
BD TORQUE	<u>100.0</u> Oz.Ft	PU TORQUE	<u>100.7</u> Oz.Ft
LR TORQUE	<u>106</u> Oz.Ft	LR AMPS	<u>5.3</u>
WINDING	T55464-3	Date	5/22/2018