

# PRODUCT INFORMATION PACKET



Model No: CZ6717VK61B

Catalog No: 119785.00

.1HP..1725RPM.56H.TENV.208-230/460V.3PH.60HZ.CONT.40C.1.15SF.RIGID  
C.CZ6T17VK32A.....Brakemotor.NOT.....

Brake Motors



Regal and Leeson are trademarks of Regal Beloit Corporation or one of its affiliated companies.

©2018 Regal Beloit Corporation, All Rights Reserved. MC017097E





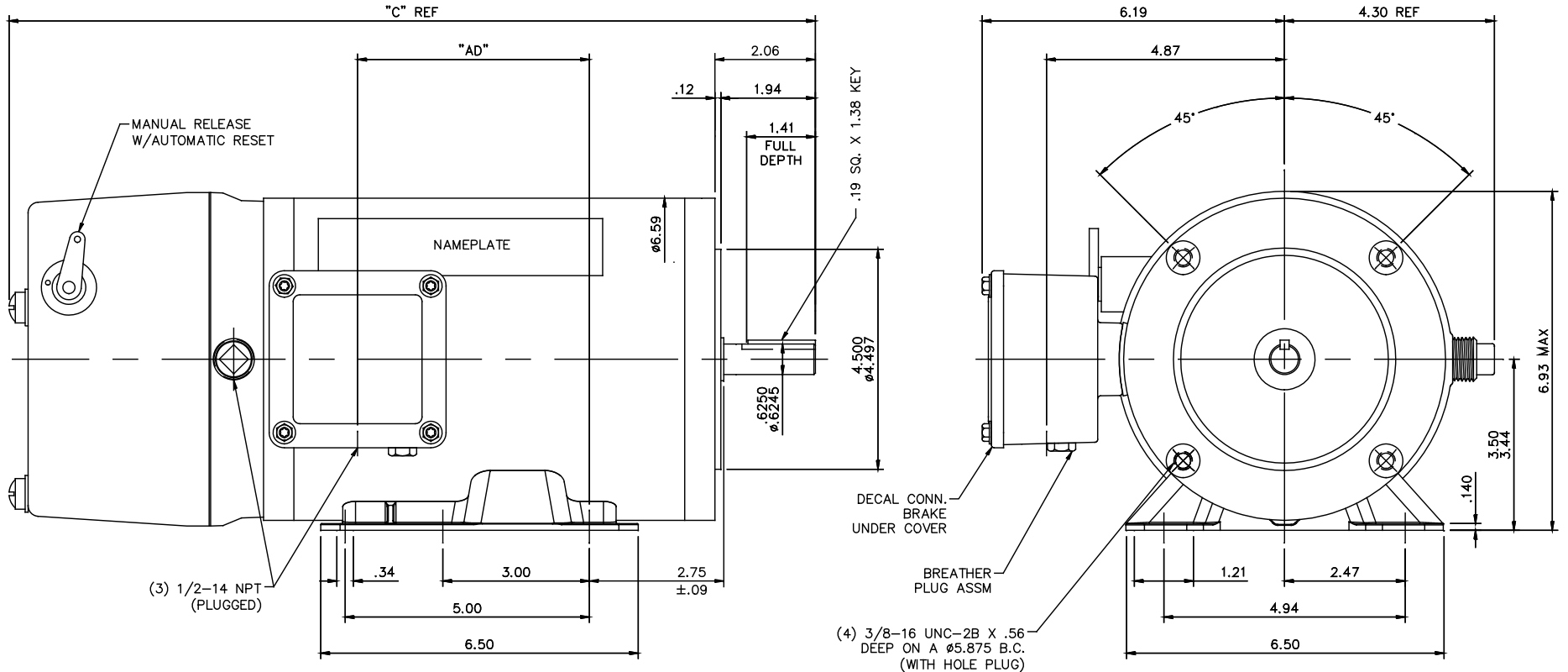
### Nameplate Specifications

Output HP	<b>1 Hp</b>	Output KW	<b>0.75 kW</b>
Frequency	<b>60 Hz</b>	Voltage	<b>208-230/460 V</b>
Current	<b>3.0-2.8/1.4 A</b>	Speed	<b>1750 rpm</b>
Service Factor	<b>1.15</b>	Phase	<b>3</b>
Efficiency	<b>85.5 %</b>	Duty	<b>Continuous</b>
Insulation Class	<b>F</b>	Design Code	<b>B</b>
KVA Code	<b>L</b>	Frame	<b>56HC</b>
Enclosure	<b>Totally Enclosed Non Ventilated</b>	Overload Protector	<b>No</b>
Ambient Temperature	<b>40 °C</b>	Drive End Bearing Size	<b>6205</b>
Opp Drive End Bearing Size	<b>6205</b>	UL	<b>Recognized</b>
CSA	<b>Y</b>	CE	<b>Y</b>
IP Code	<b>56</b>		

### Technical Specifications

Electrical Type	<b>Squirrel Cage Inverter Rated</b>	Starting Method	<b>Line Or Inverter</b>
Poles	<b>4</b>	Rotation	<b>Reversible</b>
Mounting	<b>Rigid base</b>	Motor Orientation	<b>HORIZONTAL</b>
Drive End Bearing	<b>BALL</b>	Opp Drive End Bearing	<b>BALL</b>
Frame Material	<b>Stainless Steel</b>	Shaft Type	<b>NEMA 56</b>
Overall Length	<b>18.01 in</b>	Frame Length	<b>9.50 in</b>
Shaft Diameter	<b>0.625 in</b>	Shaft Extension	<b>1.88 in</b>
Assembly/Box Mounting	<b>F1 ONLY</b>		
Outline Drawing	<b>607-0286-950</b>	Connection Diagram	<b>005010.15</b>

607-0286



DASH NO.	"C"	"AD"
800	16.51	4.74
850	17.01	5.24
900	17.51	5.74
950	18.01	6.24

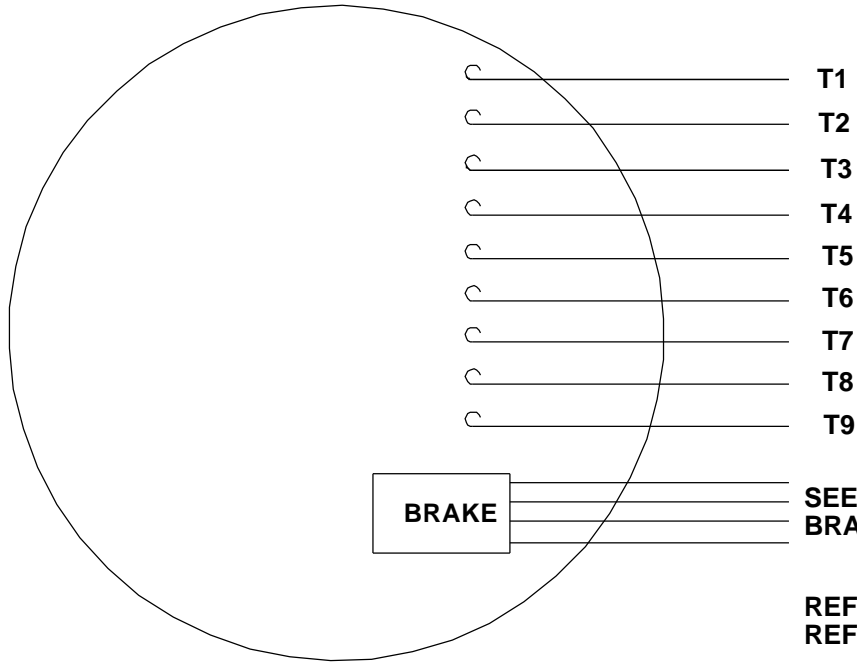
MAXIMUM FACE RUNOUT TO BE .004 T.I.R.  
 MAXIMUM PILOT ECCENTRICITY .004 T.I.R.  
 PERMISSIBLE SHAFT RUNOUT .002 T.I.R.

**ALL-STAINLESS**  
 VITON CONDUIT BOX & COVER GASKETS  
 VITON O-RINGS IN ENDBELL RABBETS, UNDER THRU BOLT HEADS & BRAKE LEAD HOLE  
 VITON SHAFT SEAL  
 BREATHER PLUG IN CONDUIT BOX  
 ALL STAINLESS STEEL CONSTRUCTION

ORACLE REV	0
------------	---

TOLERANCES UNLESS SPECIFIED		REGAL™ Regal Beloit America, Inc.		CHK	JD 12/22/2016
DEC.	INCHES			APPD	
.X	±.1	TITLE		SCALE	1=2
.XX	±.03	OUTLINE - 56HC FRAME		REF	028582
.XXX	±.005	TENV - RIGID "C"		FMF	119785.00
.XXXX	±.0005	MAT'L STAINLESS STEEL DUCK - BRAKE MOTOR		PREV	
NO.	REVISION	BY & DATE	CHK	ANG	±1/2'
NEW DRAWING			RFP	CAD FILE	607-0286
THIS DRAWING IN DESIGN AND DETAIL IS OUR PROPERTY AND MUST NOT BE USED EXCEPT IN CONNECTION WITH OUR WORK ALL RIGHTS OF DESIGN AND INVENTION ARE RESERVED THIS IS AN ELECTRONICALLY GENERATED DOCUMENT - DO NOT SCALE THIS PRINT		DIST	FINISH	SIZE	DRAWING NO.
				B	607-0286
					REV. A

VIEW FROM OUTSIDE OF MOTOR AT SWITCH END.

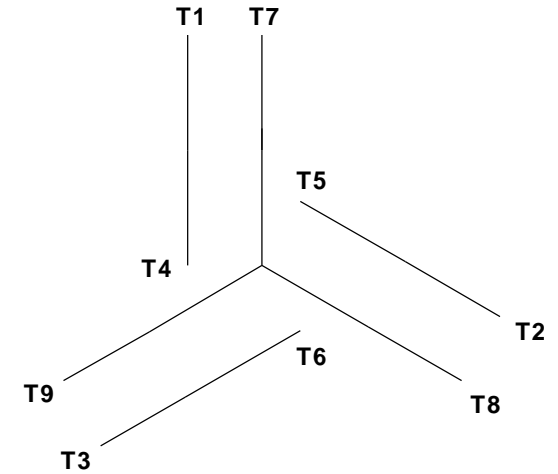


**CAUTION:**  
LEAD WIRE INSULATION TO EXTEND  
MINIMUM OF 1/4" INTO CONNECTOR  
INSULATION

SEE TABLE FOR  
 BRAKE CONNECTIONS

REF. DECAL (MOTOR) - 004014  
 REF. DECAL (BRAKE) - 080034 (STEARNS & DINGS BRAKE)

**LINE LEADS**



VOLTAGE	L1	L2	L3	JOIN & INSULATE
HIGH	T1	T2	T3	(T4, T7) (T5, T8) (T6, T9)
LOW	T1, T7	T2, T8	T3, T9	T4, T5, T6

RBC PROPRIETARY AND CONFIDENTIAL INFORMATION  
 This document is the property of REGAL BELOIT CORPORATION ("RBC") including its subsidiaries and divisions and contains proprietary information of RBC. This document is loaned on the express condition that neither it nor the information contained therein shall be disclosed to others without the express written consent of RBC, and that the information shall be used by the recipient only as approved expressly by RBC. This document shall be returned to RBC upon its request. This document may be subject to certain restrictions under U.S. export control laws and regulations.

**TYPE "T" W/O PROTECTOR**

BRAKE CONNECTION						
VOLTAGE	STEARNS BRAKE			DINGS BRAKE		
	L1	L2	Join	L1	L2	Join
HIGH	1(REDF)	2(REDF)	3(BLACK) 4(BLACK)	2(BLACK)	4(YELLOW)	1(YELLOW) 3(BLACK)
LOW	1(REDF) 3(BLACK)	2(REDF) 4(BLACK)	-----	2(BLACK) 3(BLACK)	1(YELLOW) 4(YELLOW)	-----

				TOLERANCES UNLESS SPECIFIED		ELECTRIC MOTORS GEARMOTORS AND DRIVES	DRAWN JJK 09/17/96	
				DEC	INCHES		CHK	
				.X	±.1	APPR		
				.XX	±.01	SCALE 1:1		
--	REDRAWN IN SOLIDWORKS	VJB 02/08/11	.XXX	±.005	TITLE EXTERNAL WIRING DIAGRAM STANDARD 3 PHASE - DUAL VOLTAGE		REF 005010-01	
01	ADDED DINGS AND BRAKE TABLE (PER CN114156)	TMZ 11/12/96	.XXXX	±.0005	MAT'L W/STEARNS OR DINGS DUAL VOLTAGE BRAKE CONN.		FMF	
NO	REVISION	BY & DATE	CHK	ANG ±1/2°	FINISH LEESON STOCK		PAGE OF	
THIRD ANGLE PROJECTION				RFP	PREV	SIZE	DRAWING NO	REV
				NETWORK FILE NAME 00501015		<b>A</b>	<b>005010-15</b>	--



**LEESON ELECTRIC CORPORATION**  
TYPICAL PERFORMANCE CURVE for AC MOTOR

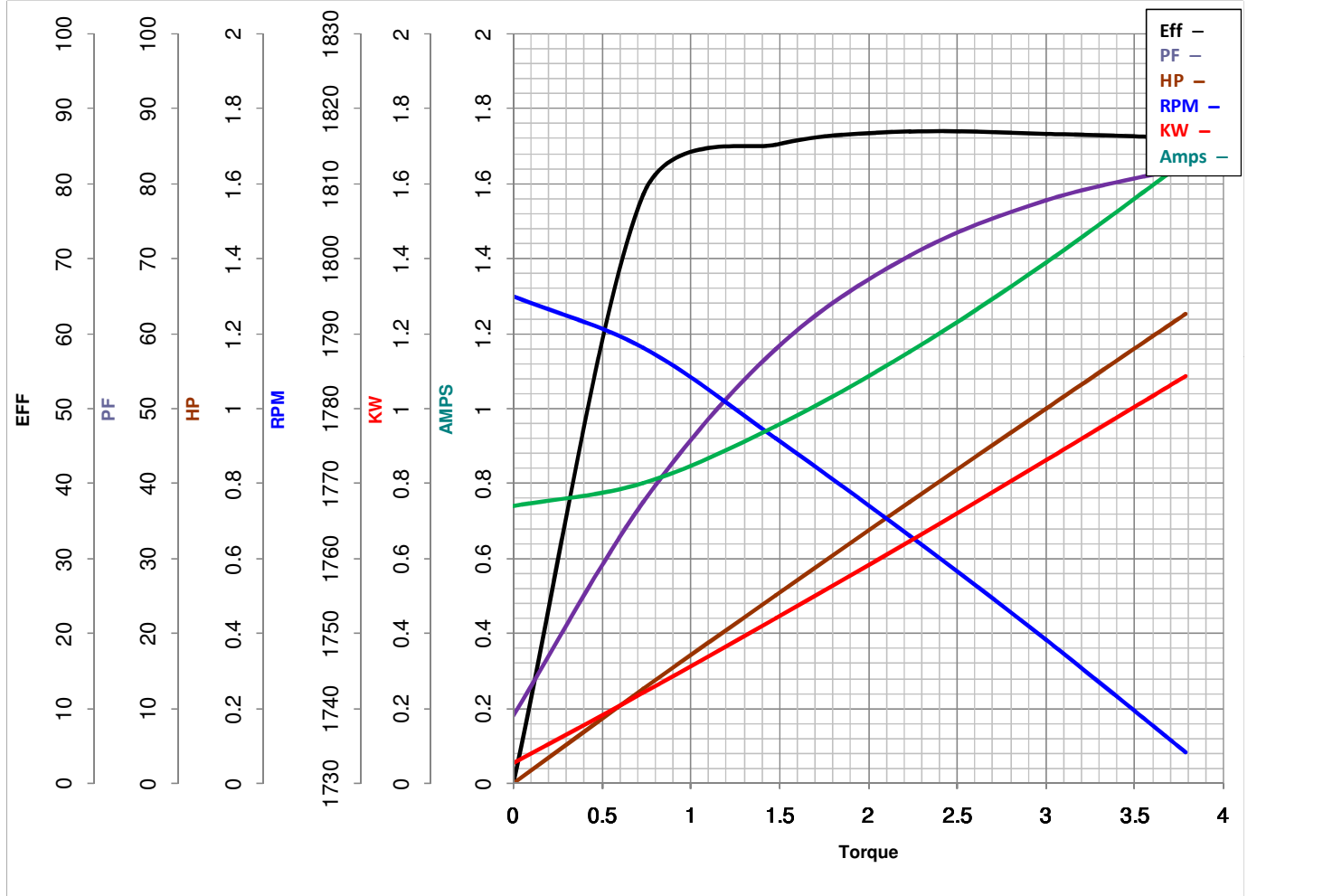
Model No 119785.00

Curve at 460 Volts  
60 HZ  
1 HP

HP 1&0.75 PHASE 3  
VOLTS 208-230/460&190/380

Catalog No 119785.00

HZ 60&50 RPM 1750&1450



Torque in Lb.Ft

FL TORQUE 3.003 Lb.Ft  
BD TORQUE 12.9 Lb.Ft  
LR TORQUE 10.38 Lb.Ft

FL AMPS 3-2.8/1.4  
PU TORQUE 11.4 Lb.Ft  
LR AMPS 12.43

WINDING T634471-3

Date 5/25/2018