

**BALDOR® • RELIANCE** 

**Product Information Packet**

**ECP44402T-4**

**400HP,3570RPM,3PH,60HZ,L449TS,A44208M,TE**

Part Detail							
Revision:	D	Status:	PRD/A	Change #:		Proprietary:	No
Type:	AC	Elec. Spec:	A44WG5211	CD Diagram:	416820-036	Mfg Plant:	
Mech. Spec:		Layout:	617435-427	Poles:	02	Created Date:	05-17-2017
Base:		Eff. Date:	02-20-2018	Leads:	3#1/0 (04 per group)		

Specs			
Catalog Number:	ECP44402T-4	Heater Indicator:	No Heater
Enclosure:	TEFC	Insulation Class:	F
Frame:	L449TS	Inverter Code:	Not Inverter
Frame Material:	Iron	IP Rating:	NONE
Output @ Frequency:	400.000 HP @ 60 HZ	KVA Code:	G
Synchronous Speed @ Frequency:	3600 RPM @ 60 HZ	Lifting Lugs:	No Lifting Lugs
Voltage @ Frequency:	460.0 V @ 60 HZ	Motor Lead Quantity/Wire Size:	12 @ 1/0 AWG
XP Class and Group:	None	Motor Type:	A44208M
XP Division:	Division II	Mounting Arrangement:	F1
Agency Approvals:	CSA EEV	Power Factor:	92
Auxillary Box:	No Auxillary Box	Product Family:	General Industrial
Base Indicator:	Rigid	Pulley End Bearing Type:	Ball
Bearing Grease Type:	Polyrex EM (-20F +300F)	Pulley Face Code:	Standard
Constant Torque Speed Range:	30-60	Shaft Ground Indicator:	No Shaft Grounding
Current @ Voltage:	420.000 A @ 460.0 V	Shaft Rotation:	Reversible
Design Code:	B	Shaft Slinger Indicator:	Shaft Slinger
Drip Cover:	No Drip Cover	Speed Code:	Single Speed
Duty Rating:	CONT	Motor Standards:	NEMA

<b>Enclosure Modification:</b>	Severe Duty Features	<b>Starting Method:</b>	Direct on line
<b>Feedback Device:</b>	NO FEEDBACK	<b>Thermal Device - Bearing:</b>	NONE (OLD)
<b>Frame Prefix:</b>	L	<b>Thermal Device - Winding:</b>	None
		<b>XP Temp Code:</b>	T2C

Nameplate NP2496L

MOBIL POLYREX EM

Nameplate 000901002AAA	
IP-55 CONSTRUCTION	

Nameplate NP3238									
CAT NO	ECP44402T-4	SPEC NO.	A44-7175-5211						
HP	400	AMPS	420	VOLTS	460	DESIGN	B		
FRAME	L449TS	RPM	3570	HZ	60	AMB	40	SF	1.15
D.E. BRG.DATA	6313	O.D.E. BRG.DATA	6313	PH	3	DUTY	CONT	INSUL.CLASS	F
D.E. BRG.	65BC03J30X	TYPE	P	ENCL	TEFC	CODE	G	NEMA NOM EFFICIENCY	96.2
O.D.E. BRG.	65BC03J30X	POWER FACTOR	92	MAX CORR KVAR	25.0	GUARANTEED EFFICIENCY	95.4		
3/4 LOAD EFF.	96.5	TEMP	= 230						
TEMP CODE	T2C	CT HZ	30-60	VT HZ	0-60				
CHP HZ	60-75								
INVERTER-TEMP-CODE	T2C								
SER.NO.		MOTOR WEIGHT							

Parts List		
Part Number	Description	Quantity
SA338715	SA A44-7175-5211	1.000 EA
RA327045	RA A44-7175-5211	1.000 EA
421948051	LABEL, MYLAR	1.000 EA
NP2496L	MOTOR LUBE NAMEPLATE	1.000 EA
000613006PU	N/P (RELEASE QTY 10,000) UL CSA LABEL	1.000 EA
000692000FF	N/P	1.000 EA
000692000VD	LABEL WARNING	1.000 EA
000901002AAA	N/P BLANK (RELEASE QTY 1,500)	1.000 EA
LB1449	DIV-2/NEC WARNING LABEL	1.000 EA
NP3238	SS CP XEX SEVERE DUTY MAIN NP	1.000 EA
089490097A	BRKT 089490102WCA	1.000 EA
415072001B	CLAMP	1.000 EA
083199082RA	G28 SHORT FAN COVER W/BAFFLE ASSEMBLY	1.000 EA
034180014DA	KEY 1/4X1/4X1-3/4 L	1.000 EA
078548001R	FAN KB 234/150 (84) 400	1.000 EA
004824015A	GREASE POLYREX EM	0.540 LB
032018020FK	HHCS 3/4-10X2-1/2 PLTD.	4.000 EA
032018008CK	HHCS 3/8-16X1L PLATED	4.000 EA
032018020CK	HHCS 3/8-16X2-1/2 PLTD.	3.000 EA
415096002A	CPLG 1/8 HEX TYPE	1.000 EA
415045002E	SLGR	1.000 EA
410700004F	WSHR	1.000 EA
035000001G	GREASE RELIEF FITTING, ALEMITE 317400	1.000 EA
034017014AB	LCKW 3/8 STD. PLATED	4.000 EA

Parts List (continued)		
Part Number	Description	Quantity
034530072AB	P/NIP 1/8X9"L Threaded both ends	1.000 EA
034630002AB	CPLG 1/4" PLATED	1.000 EA
034690005AB	PPLG 3/4 PLATED	2.000 EA
034530072BB	PIPE NIPPLE,DE - 440-BS	1.000 EA
034600001AA	BUSH 1/4TO1/8 BLACK	1.000 EA
032620016LA	SOCKET SET SCREW-449	3.000 EA
034630002AB	CPLG 1/4" PLATED	1.000 EA
034530044BB	P/NIP 1/4X5-1/2L PLT	1.000 EA
702623012A	THERMAL BARRIER, G28	1.000 EA
032018004BK	HHCS 5/16-18X1/2 PLATED	3.000 EA
034017013AB	LCKW 5/16 STD. PLATED	3.000 EA
034001013AB	FLTW BAFFLE	3.000 EA
034600001AA	BUSH 1/4TO1/8 BLACK	1.000 EA
702623022AB	G28 DE AIR SCOOP-HIGH IMPACT PLASTIC-	1.000 EA
032018006BK	HHCS 5/16-18X3/4 PLATED	3.000 EA
034017013AB	LCKW 5/16 STD. PLATED	3.000 EA
089490097A	BRKT 089490102WCA	1.000 EA
032018020FK	HHCS 3/4-10X2-1/2 PLTD.	4.000 EA
032018022CK	HHCS 3/8-16X2-3/4 PLTD	3.000 EA
415045002E	SLGR	1.000 EA
034530044AB	P/NIP 1/8X5-1/2L GALV.	1.000 EA
415096002A	CPLG 1/8 HEX TYPE	1.000 EA
035000001G	GREASE RELIEF FITTING, ALEMITE 317400	1.000 EA
415915007K	GASK, 26" LAC	1.000 EA



Product Information Packet: ECP44402T-4 - 400HP,3570RPM,3PH,60HZ,L449TS,A44208M,TE

406056008A	GASKET, TERBD 440	1.000 EA
418150003A	GREASE FITTING CAP	1.000 EA
032018008DK	HHCS 1/2-13X1 PLATED	4.000 EA
702616012RE	CONDUIT BOX	1.000 EA
035000001A	ALFTG 1/8" 1610-BL	1.000 EA
406099000A	PLUG - FAN COVER 320-440	1.000 EA
035000001A	ALFTG 1/8" 1610-BL	1.000 EA
418150003A	GREASE FITTING CAP	1.000 EA
MG1025N19	WILKO 778.50 BLUE GREEN - 55 GAL DRUMS	0.500 GA
033775004EA	DRSCR #6-1/4 304 S.S.	2.000 EA
034180024HA	KEY 5/8X5/8X3 L	1.000 EA
604797032	447/449 WIDE SHIPPING SKID	1.000 EA
032510026D	CARRIAGE BOLT - 440	2.000 EA
034001016AB	WSHR .562ID 1.375OD .109	2.000 EA
034001014AB	FLAT WASHER 3/8"PLATED	2.000 EA
033300014AC	HEX NUT, SHIPPING - 400	2.000 EA
604799003C	PLASTIC BAG 42X32X46	1.000 EA
412118006A	DRAIN	2.000 EA

REL. S.O.	FRAME	HP	TYPE	PHASE/HERTZ	RPM	VOLTS
	L449TS	400	P	3/60	3570	460
AMPS	DUTY	AMB °C/ INSUL.	S.F.	NEMA DESIGN	CODE LETTER	ENCL.
420	CONT	40/F	1.15	B	G	TEFC
E/S	ROTOR	TEST S.O.	TEST DATE	STATOR RES (25 °C OHMS (BETWEEN LINES))		
-	418143-016-MEQ	---	---	.00612		

**PERFORMANCE**

LOAD	HP	AMPERES	RPM	POWER FACTOR %	EFFICIENCY %
NO LOAD	0	80.7	3600	6.77	0
1/4	100	128	3593	77.8	94.0
2/4	200	215	3586	90.7	96.1
3/4	300	314	3579	92.7	96.5
4/4	400	420	3571	92.4	96.4
5/4	500	529	3563	92.0	96.1

**SPEED TORQUE**

	RPM	TORQUE % FULL LOAD	TORQUE LB.-FT.	AMPERES
LOCKED ROTOR	0	206	1208	2862
PULL UP	1670	167	983	2517
BREAKDOWN	3464	264	1554	1697
FULL LOAD	3571	100	588	420

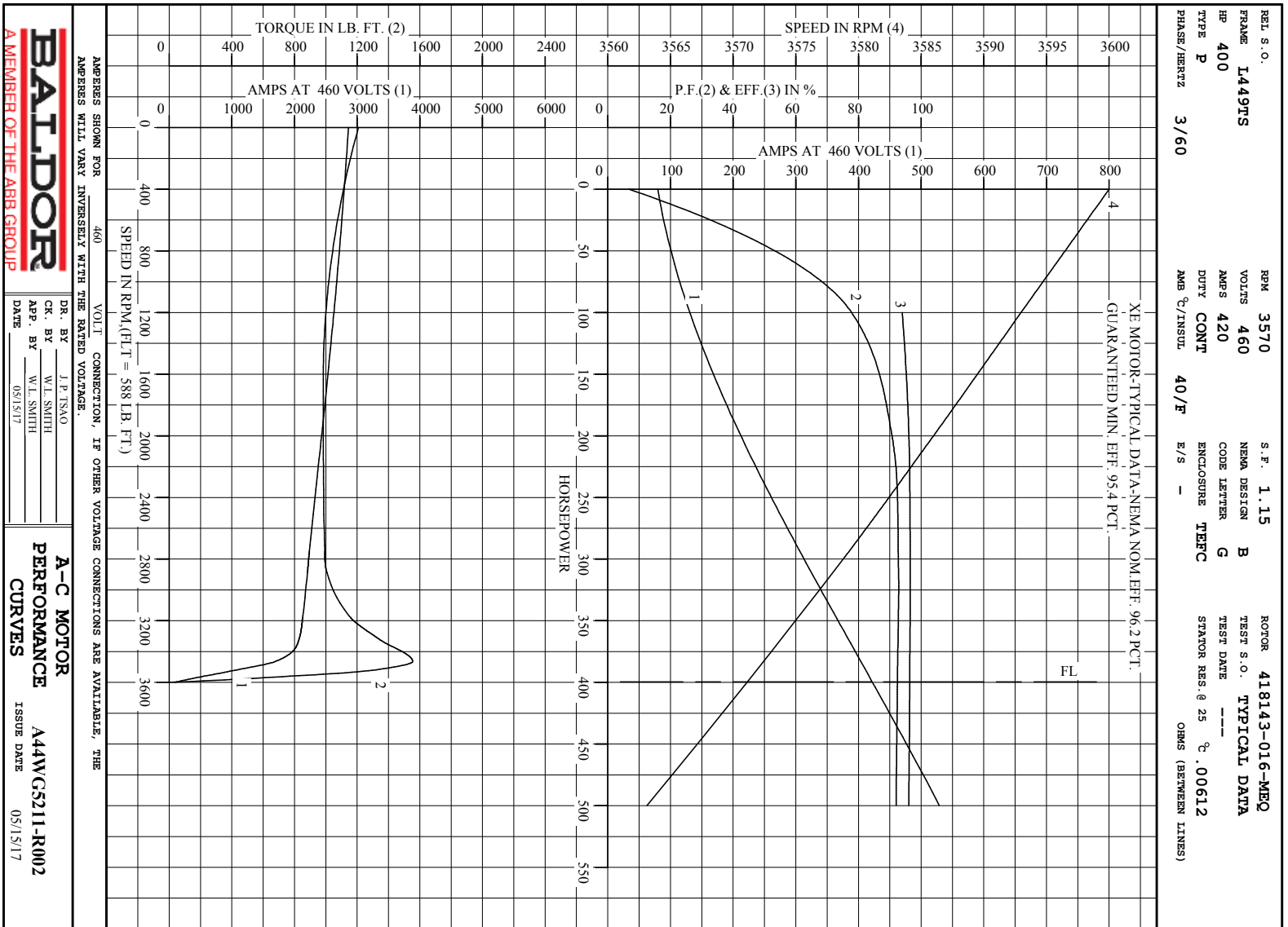
AMPERES SHOWN FOR 460. VOLT CONNECTION. IF OTHER VOLTAGE CONNECTIONS ARE AVAILABLE, THE AMPERES WILL VARY INVERSELY WITH THE RATED VOLTAGE

REMARKS: TYPICAL DATA  
 XE MOTOR-TYPICAL DATA-NEMA NOM.EFF. 96.2 PCT.  
 GUARANTEED MIN. EFF. 95.4 PCT.

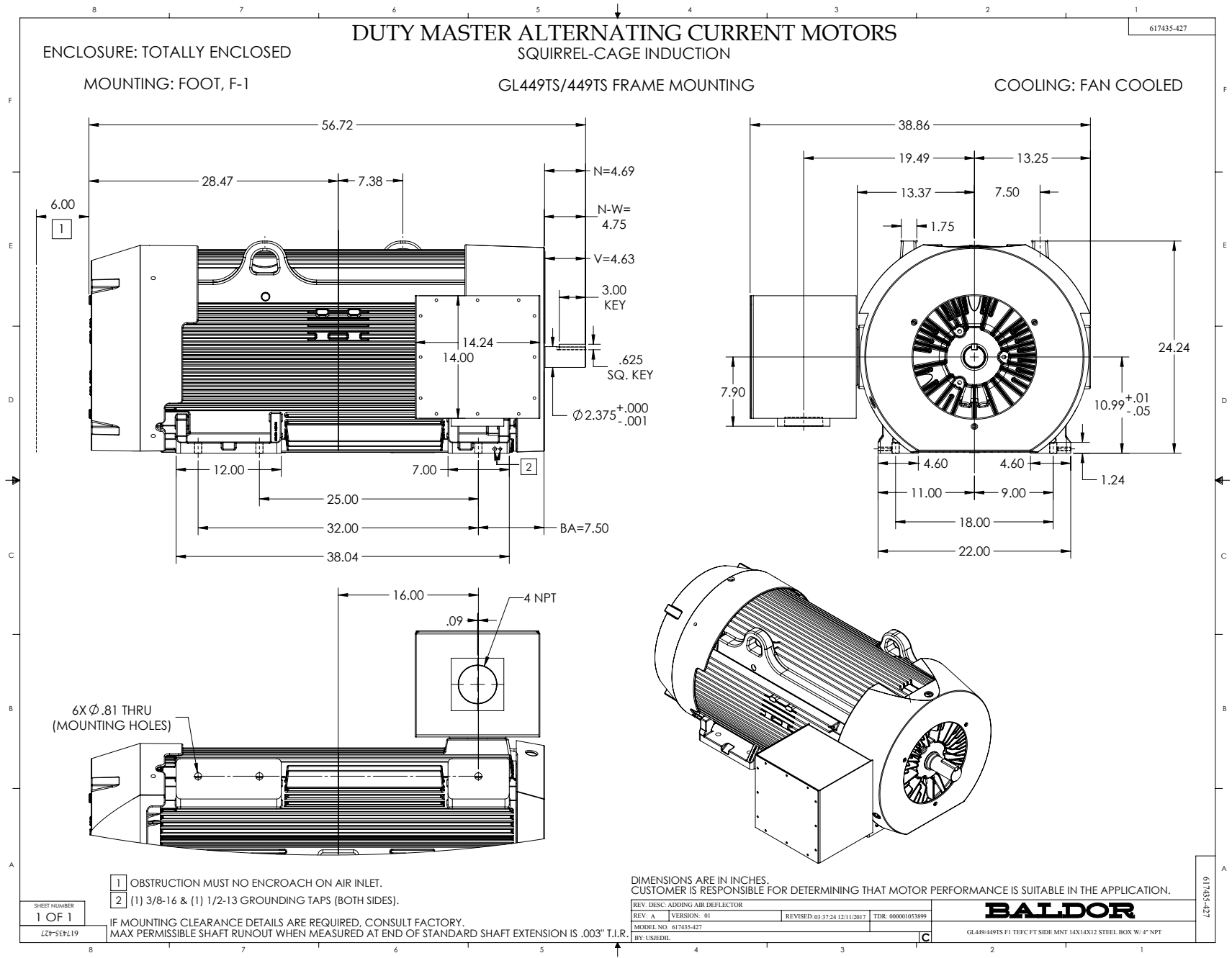


DR. BY J. P. TSNO  
 CK. BY W.L. SMITH  
 APP. BY W.L. SMITH  
 DATE 05/15/17

A-C MOTOR  
**PERFORMANCE DATA**  
 A44WG5211-R002  
 ISSUE DATE 05/15/17

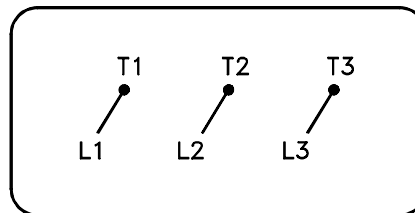


Printed on 5/16/17 9:50 @ bengap01.baldor.com



416820-036

A-C MOTOR  
 CONNECTION DIAGRAM  
 STANDARD 3 LEAD CONNECTED



(N.P. 1575-BA)

416820-036

REV. DESC: LOADED TO BUS, C/R 335225		
REV. LTR: -	VERSION: 00	TDR: 000000538207
FILE: \MGA\00000\682	REVISED: 11:54:06 04/30/2010	
MTL: -	BY: RAGRA	

**BALDOR**

CONN DIAG - STANDARD 3 LEAD

SH 1 of 1

Marketing maintained PDF of MN408:

<http://www.baldor.com/support/Literature/Load.ashx/MN408?ManNumber=MN408>

Marketing maintained PDF of MN416:

<http://www.baldor.com/support/Literature/Load.ashx/MN416?ManNumber=MN416>